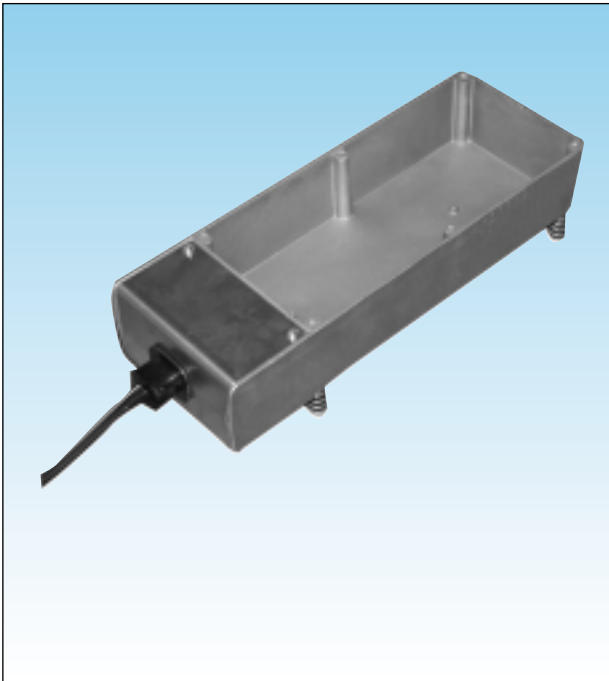


## T12 Series Condensate Trays



Large capacity with self regulating heater control to rapidly evaporate defrost and condensate water.

**Features:**

- Solid State PTC controlled
- Self Regulating
- Large Capacity
- UL Recognised NSF Component

Die cast aluminium construction with a large water capacity of 1.5 litres yet its dimensions allow for space saving installation. Using solid state self regulating PTC heat elements which provide effective evaporation of defrost or condensate water without the need for additional temperature control. Each tray is supplied with a removable power cord with moulded plug and is mounted on four wire spring type feet. As an option a wall mount bracket is available.

**Evaporating Rate Per Hour: 210-240ml**

### Specifications

Volume	:	50oz 1500ml
Dimensions	:	120 x 317 x 70mm
Supply	:	220 Volt
Rating	:	160 Watt or 300 Watt
Connections	:	450mm long power cord & moulded plug

### How to order

T12-0372	:	160w	220V
T12-5200	:	300w	220V
T12-3350	:	Wall mount bracket	