


APPROVALS



 **ENGINEERING CODE**
553CA0012AA

 **APPROVED REFRIGERANT**
R290

 **POWER SUPPLY**
220 - 240V 50Hz ~

 **STANDARD CONDITIONS**
EN13215_SH10

 **APPLICATION**
M/HBP

 **COOLING CAPACITY**
830 W

 **EFFICIENCY**
1.63 W/W

DATA

General Data

Weight	20 Kg
Height	296 mm
Length	465 mm
Width	340 mm
Power Supply	220 - 240 V 50 Hz

Electrical Data

Motor Type	CSIR
Locked Rotor Amperage (LRA)	19.3 A
Max Current	4.44 A

Spare Parts

Compressor	NEK6213U	863CA51..AM
Condenser	3R11T	2451206
Fan Kit	IQ3612 254/28/5P	1996703
Electrical Kit	ELKOM NEK6213U	863CA51N1A

Noise Data

Sound Power Level	63.8 dB (A)	-	-
Sound Pressure Level	at 1 m	at 5 m	at 10 m
	55.8 dB (A)	41.8 dB (A)	35.8 dB (A)

Fan Motor

Number	1
Shaft Power	-
Air Flow	595 m ³ /h
Blade diameter	254 mm

PERFORMANCE

Rated Points

Ambient Temperature	Cooling Capacity	Power Consumption	Current	Efficiency
32.00°C	830 W	510 W	3.63 A	1.63 W/W

Test Condition EN13215_SH10: Evaporating temp. -10.00°C, Ambient temp. 32.00°C, Return Gas 0 °C, Subcooling 3K , Superheating 10K

Performance Curve Data

Ambient Temperature 25°C

Evaporating Temperature °C	Cooling Capacity W	Power Consumption W	Current A	Efficiency W/W
-20	617	412	3.36	1.5
-15	781	455	3.5	1.72
-10	940	495	3.62	1.9
-5	1102	534	3.74	2.06
0	1274	574	3.87	2.22
5	1463	615	4.01	2.38
10	1677	661	4.17	2.54

Test Condition EN13215_SH10: Evaporating temp. -10.00°C, Ambient temp. 25.00°C, Return Gas 0 °C, Subcooling 3K , Superheating 10K

Ambient Temperature 32°C

Evaporating Temperature °C	Cooling Capacity W	Power Consumption W	Current A	Efficiency W/W
-20	584	437	3.42	1.33
-15	703	472	3.52	1.49
-10	830	510	3.63	1.63
-5	970	552	3.76	1.76
0	1132	600	3.93	1.89
5	1322	656	4.13	2.02
10	1550	720	4.38	2.15

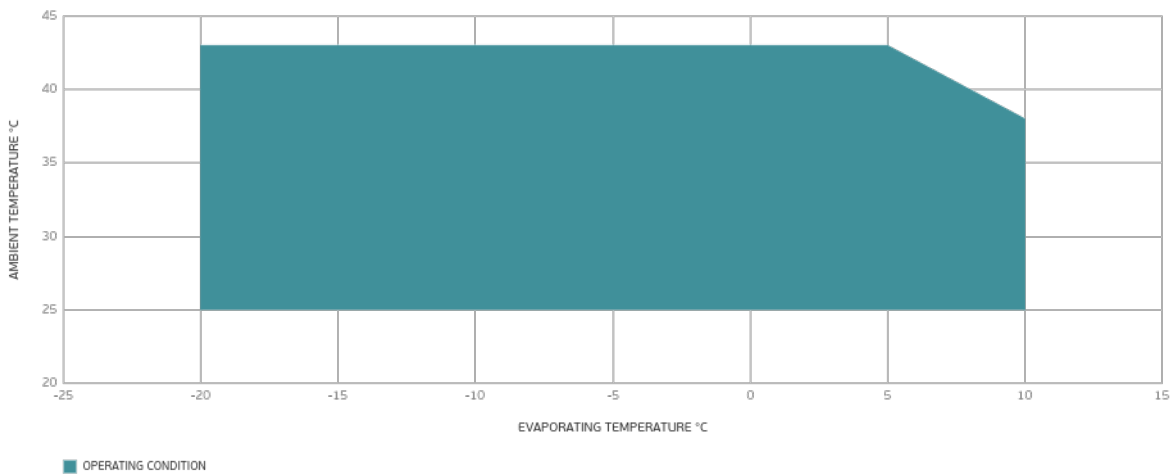
Test Condition EN13215_SH10: Evaporating temp. -10.00°C, Ambient temp. 32.00°C, Return Gas 0 °C, Subcooling 3K , Superheating 10K

Ambient Temperature 43°C

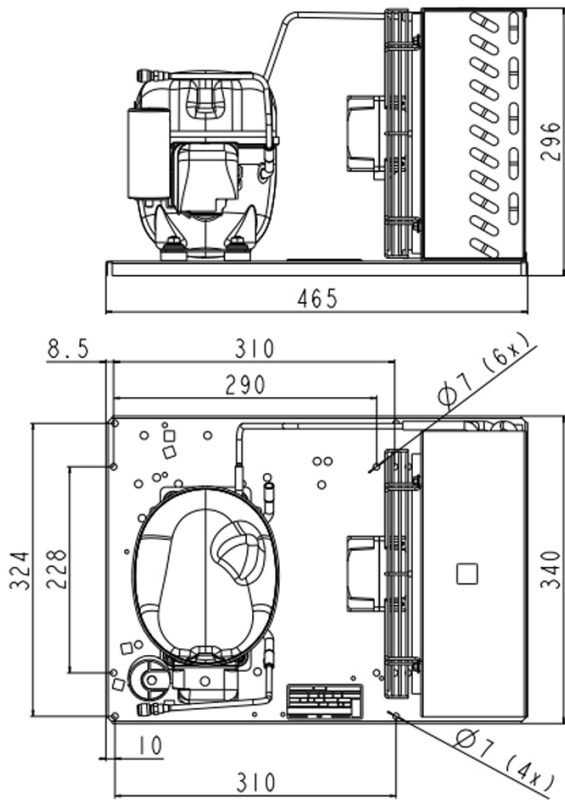
Evaporating Temperature °C	Cooling Capacity W	Power Consumption W	Current A	Efficiency W/W
-20	462	463	3.48	1
-15	557	497	3.57	1.12
-10	677	544	3.72	1.25
-5	829	603	3.92	1.38
0	1021	676	4.19	1.51
5	1260	766	4.54	1.65
10	1555	873	4.96	1.78

Test Condition EN13215_SH10: Evaporating temp. -10.00°C, Ambient temp. 43.00°C, Return Gas 0 °C, Subcooling 3K , Superheating 10K

Operating Envelope



External Dimensions



Wiring Diagram

