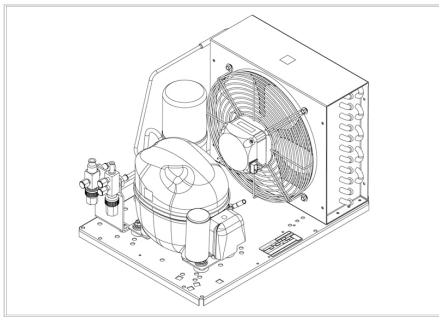


MODEL


UNEK6210GK

embraco





APPROVALS



 **ENGINEERING CODE**
674CA8212AA

 **APPROVED REFRIGERANT**
R404A

 **POWER SUPPLY**
220 - 240V 50Hz ~

 **STANDARD CONDITIONS**
EN13215_SH10

 **APPLICATION**
M/HBP

 **COOLING CAPACITY**
654 W

 **EFFICIENCY**
1.33 W/W

DATA

General Data

Weight	21.4 Kg
Receiver	1.1 L
Height	296 mm
Length	465 mm
Width	340 mm
Power Supply	220 - 240 V 50 Hz

Electrical Data

Motor Type	CSIR
Locked Rotor Amperage (LRA)	16.1 A
Max Current	3.91 A

Spare Parts

Condenser	3R11T	2451206
Valve Suction	FLARE 3/8"	2110059
Valve Discharge	FLARE 1/4"	2110085
Compressor	NEK6210GK	958CA51..AM
Electrical Kit	ELKOM NEK6210GK	958CA51N1A
Fan Kit	16W 254/28°/5B	1996610

Noise Data

Sound Power Level	65.1 dB (A)	-	-
Sound Pressure Level	at 1 m	at 5 m	at 10 m
	57.1 dB (A)	43.1 dB (A)	37.1 dB (A)

Fan Motor

Number	1
Shaft Power	16 W
Air Flow	595 m ³ /h
Blade diameter	254 mm

PERFORMANCE

Rated Points

Ambient Temperature	Cooling Capacity	Power Consumption	Current	Efficiency
32.00°C	654 W	490 W	3.21 A	1.33 W/W

Test Condition: EN13215_SH10, Return Gas 0 °C, Subcooling 3K , Evaporation -10.00°C, Condensing 0 °C, Ambient 32.00°C

Performance Curve Data

Ambient Temperature 25°C

Evaporating Temperature °C	Cooling Capacity W	Power Consumption W	Current A	Efficiency W/W
-20	466	389	2.83	1.2
-15	596	425	2.96	1.4
-10	742	463	3.09	1.6
-5	904	502	3.24	1.8
0	1081	544	3.41	1.99
5	1273	588	3.59	2.16
10	1481	636	3.8	2.33

Test Condition: EN13215_SH10, M/HBP

Ambient Temperature 32°C

Evaporating Temperature °C	Cooling Capacity W	Power Consumption W	Current A	Efficiency W/W
-20	421	413	2.94	1.02
-15	530	450	3.07	1.18
-10	654	490	3.21	1.33
-5	792	533	3.37	1.49
0	944	579	3.55	1.63
5	1111	630	3.75	1.76
10	1292	685	3.98	1.89

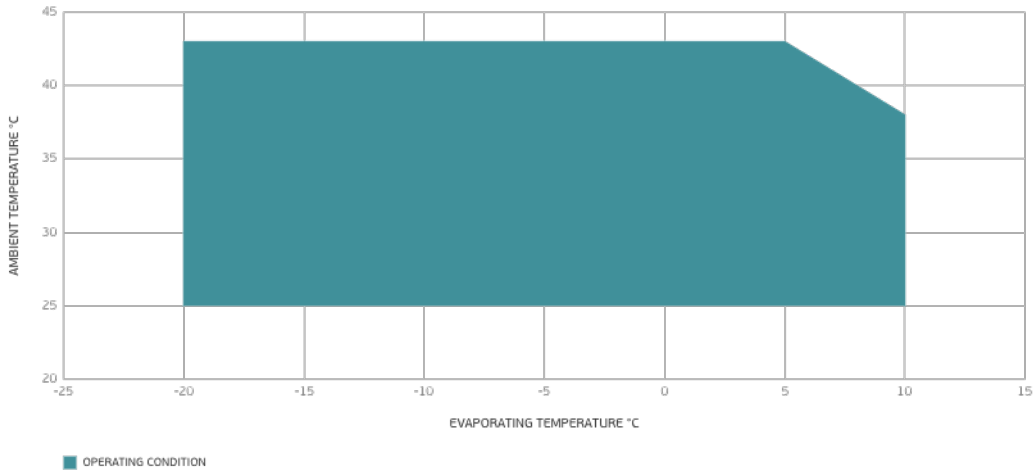
Test Condition: EN13215_SH10, M/HBP

Ambient Temperature 43°C

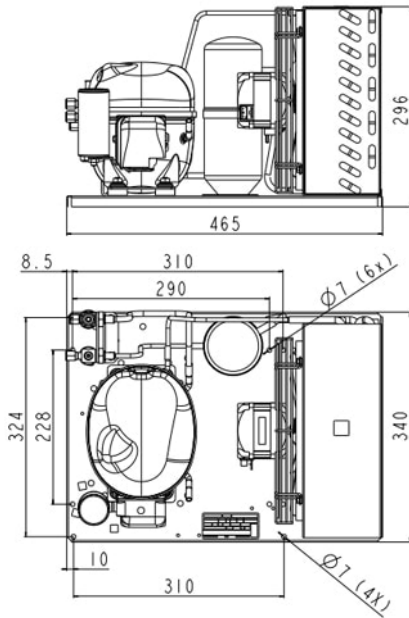
Evaporating Temperature °C	Cooling Capacity W	Power Consumption W	Current A	Efficiency W/W
-20	315	445	3.03	0.71
-15	405	485	3.17	0.84
-10	508	528	3.34	0.96
-5	623	576	3.53	1.08
0	751	630	3.75	1.19
5	891	688	3.99	1.3
10	1044	753	4.27	1.39

Test Condition: EN13215_SH10, M/HBP

Operating Envelope



External Dimensions



Wiring Diagram

