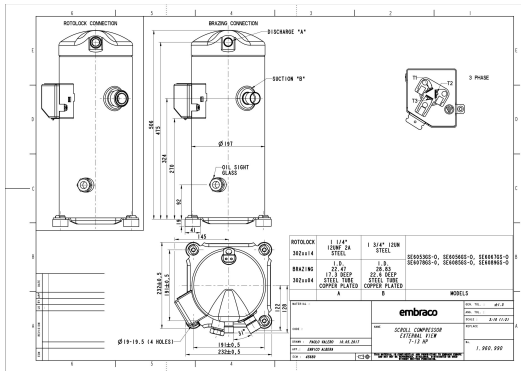


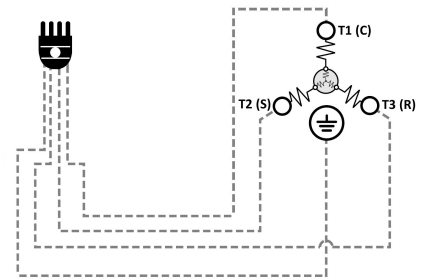
### GENERAL DATA

<b>Type:</b>	Hermetic Scroll Compressor
<b>Refrigerant:</b>	R404A
<b>Application:</b>	MBP
<b>Evaporating Temperature Range:</b>	-30°C to 10°C
<b>Voltage/Frequency:</b>	380 V 50 ~3 460 V 60 ~3
<b>Compressor Cooling:</b>	Static
<b>Technology Type:</b>	On-Off
<b>Tube connections:</b>	Rotolock
<b>Packing Quantity:</b>	9
<b>Horse Power:</b>	13
<b>Oil Type:</b>	POE 32
<b>Oil Initial Charge volume:</b>	2.7 l
<b>Oil Recharge volume:</b>	2.6 l
<b>Free Internal Volume:</b>	6.3 l - 0.9 l
<b>Refrigerant Charge:</b>	10.5 l
<b>Institute Approvals:</b>	<b>CE</b>

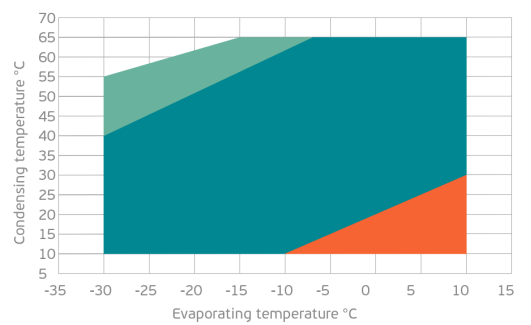
### EXTERNAL DIMENSIONS



### WIRING DIAGRAM



### OPERATING ENVELOPE



## MECHANICAL DATA

<b>Displacement:</b>	197.1 cm <sup>3</sup> /rev (34.3 m <sup>3</sup> /h)
<b>Maximum Recommended Refrigerant Charge:</b>	10.5 ml
<b>Weight:</b>	54 kg

At maximum evaporating temperature and maximum ambient temperature.

## ELECTRICAL DATA

<b>Motor Type:</b>	Induction motor -
<b>Pole:</b>	2 -
<b>Starting Torque:</b>	HST -
<b>Voltage Working Range 50Hz:</b>	342-462 V
<b>Voltage Working Range 60Hz:</b>	414-506 V
<b>Maximum Motor Temperature:</b>	130 °C
<b>Motor Insulation Class:</b>	B -
<b>Run Winding Resistance:</b>	1.06 Ω (± 10%) at 25°C
<b>Start Winding Resistance:</b>	- Ω (± 10%) at 25°C

At maximum evaporating temperature and maximum ambient temperature.

## ELECTRICAL COMPONENTS

	Component type	Description	Code
<b>Motor Protection:</b>	Internal protector	-	-
<b>Starting Device:</b>	-	-	-
<b>Start Capacitor:</b>	-	-	-
<b>Run Capacitor:</b>	-	-	-
<b>CSR Box:</b>	-	-	-

## ACCESSORIES

	Includes
<b>Cover:</b>	yes
<b>Cover Gasket:</b>	yes
<b>Grounding Screw:</b>	yes
<b>Liquid Injection:</b>	-
<b>Temperature Sensor:</b>	-
<b>Grommets:</b>	yes
<b>Sleeves:</b>	yes
<b>Crankase Heater:</b>	90
<b>Noise Insulation:</b>	-
<b>Rotolock Valves:</b>	-
<b>Rotolock Adapter:</b>	-
<b>Service Valves:</b>	-

For additional accessories please contact our technical support

## EXTERNAL CHARACTERISTICS

<b>Base Plate Max Dimensions:</b>	232x232mm
<b>Base Plate Holes Interaxis:</b>	191x191mm
<b>Height:</b>	506mm
<b>Compressor Shell Diameter:</b>	197mm
<b>Hanger Tab:</b>	yes
<b>Oil Side Glass:</b>	yes

	Shape	Material	Internal Diameter (mm)
<b>Suction Connector</b>	Rotolock	Copper plated steel tube	1 3/4"-12UN
<b>Discharge Connector</b>	Rotolock	Copper plated steel tube	1 1/4"-12 UNF 2A

**RATED POINTS**

	380V 50Hz	460V 60Hz	380V 50Hz	460V 60Hz
<b>Conditions</b>	EN12900: Te -10°C; Tc 45°C; Rg 20°C; No subcooling; Ta 35°C	EN12900: Te -10°C; Tc 45°C; Rg 20°C; No subcooling; Ta 35°C	ARI540(2004): Te -6.7°C; Tc 48.9°C; Rg 4.4°C; No subcooling; Ta 35°C	ARI540(2004): Te -6.7°C; Tc 48.9°C; Rg 4.4°C; No subcooling; Ta 35°C
<b>Capacity (W)</b>	20585	24702	20544	24653
<b>Power Input (W)</b>	9255	11106	10170	12204
<b>COP (W/W)</b>	2.22	2.22	2.02	2.02
<b>Rated Load Amps RLA (A)</b>	15.8	15.8	16.9	16.9
<b>Locked Rotor Amps LRA (A)</b>	121	121	121	121
<b>Maximum Operating Current MOC (A)</b>	27.6	27.6	27.6	27.6
<b>Sound Power Level (dBA)</b>	77	79	77	79

**PERFORMANCE CURVE DATA**

Standard: EN 12900 / w

50 Hz

	Evaporating Temperature (°C)	Cooling Capacity (w)	Power Consumption (W)	Efficiency (w/W)
<b>35°C</b> Condensing Temperature	10°C	46 726	8 976	5.21
	5°C	39 348	8 566	4.59
	0°C	33 103	8 231	4.02
	-5°C	27 825	7 946	3.50
	-10°C	23 345	7 689	3.04
	-15°C	19 497	7 437	2.62
	-20°C	16 112	7 165	2.25
	-25°C	13 024	6 852	1.90
	-30°C	10 065	6 473	1.56
<b>45°C</b> Condensing Temperature	10°C	39 154	10 247	3.82
	5°C	33 411	9 863	3.39
	0°C	28 503	9 544	2.99
	-5°C	24 264	9 266	2.62
	-10°C	20 527	9 006	2.28
	-15°C	17 123	8 740	1.96
	-20°C	13 885	8 446	1.64
	-25°C	10 646	8 100	1.31
	-30°C	7 238	7 679	0.94

	Evaporating Temperature (°C)	Cooling Capacity (w)	Power Consumption (W)	Efficiency (w/W)
55°C Condensing Temperature	10°C	31 308	12 280	2.55
	5°C	26 933	11 959	2.25
	0°C	23 096	11 692	1.98
	-5°C	19 630	11 457	1.71
	-10°C	16 367	11 230	1.46
	-15°C	13 141	10 988	1.20
	-20°C	9 783	10 708	0.91
	-25°C	6 126	10 366	0.59