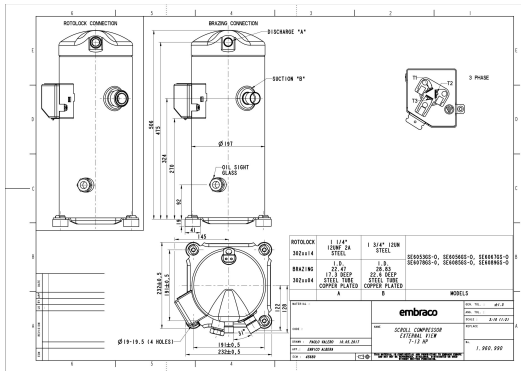


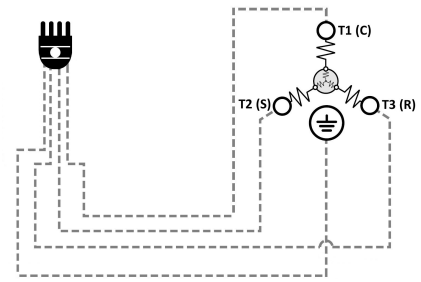
GENERAL DATA

Type:	Hermetic Scroll Compressor
Refrigerant:	R404A
Application:	MBP
Evaporating Temperature Range:	-30°C to 10°C
Voltage/Frequency:	380 V 50 ~3 460 V 60 ~3
Compressor Cooling:	Static
Technology Type:	On-Off
Tube connections:	Brazing
Packing Quantity:	9
Horse Power:	9
Oil Type:	POE 32
Oil Initial Charge volume:	2.7 l
Oil Recharge volume:	2.6 l
Free Internal Volume:	6.5 l - 0.9 l
Refrigerant Charge:	8 l
Institute Approvals:	CE

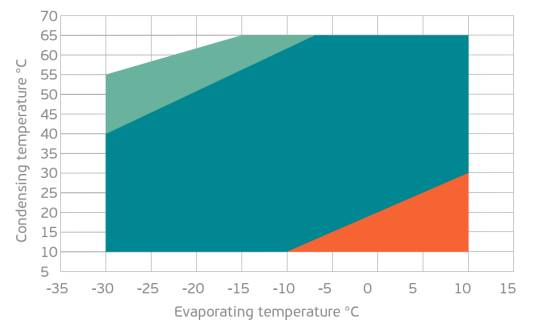
EXTERNAL DIMENSIONS



WIRING DIAGRAM



OPERATING ENVELOPE



MECHANICAL DATA

Displacement:	145.4 cm ³ /rev (25.3 m ³ /h)
Maximum Recommended Refrigerant Charge:	8 ml
Weight:	53 kg

At maximum evaporating temperature and maximum ambient temperature.

ELECTRICAL DATA

Motor Type:	Induction motor -
Pole:	2 -
Starting Torque:	HST -
Voltage Working Range 50Hz:	342-462 V
Voltage Working Range 60Hz:	414-506 V
Maximum Motor Temperature:	130 °C
Motor Insulation Class:	B -
Run Winding Resistance:	1.09 Ω (± 10%) at 25°C
Start Winding Resistance:	- Ω (± 10%) at 25°C

At maximum evaporating temperature and maximum ambient temperature.

ELECTRICAL COMPONENTS

	Component type	Description	Code
Motor Protection:	Internal protector	-	-
Starting Device:	-	-	-
Start Capacitor:	-	-	-
Run Capacitor:	-	-	-
CSR Box:	-	-	-

ACCESSORIES

	Includes
Cover:	yes
Cover Gasket:	yes
Grounding Screw:	yes
Liquid Injection:	-
Temperature Sensor:	-
Grommets:	yes
Sleeves:	yes
Crankcase Heater:	90
Noise Insulation:	-
Rotolock Valves:	-
Rotolock Adapter:	-
Service Valves:	-

For additional accessories please contact our technical support

EXTERNAL CHARACTERISTICS

Base Plate Max Dimensions:	232x232mm
Base Plate Holes Interaxis:	191x191mm
Height:	506mm
Compressor Shell Diameter:	197mm
Hanger Tab:	yes
Oil Side Glass:	yes

	Shape	Material	Internal Diameter (mm)
Suction Connector	Brazing	Copper plated steel tube	ID 28.83 mm
Discharge Connector	Brazing	Copper plated steel tube	ID 22.47 mm

RATED POINTS

	380V 50Hz	460V 60Hz	380V 50Hz	460V 60Hz
Conditions	EN12900: Te -10°C; Tc 45°C; Rg 20°C; No subcooling; Ta 35°C	EN12900: Te -10°C; Tc 45°C; Rg 20°C; No subcooling; Ta 35°C	ARI540(2004): Te -6.7°C; Tc 48.9°C; Rg 4.4°C; No subcooling; Ta 35°C	ARI540(2004): Te -6.7°C; Tc 48.9°C; Rg 4.4°C; No subcooling; Ta 35°C
Capacity (W)	15874	19049	15842	19010
Power Input (W)	7208	8650	7921	9505
COP (W/W)	2.2	2.2	2	2
Rated Load Amps RLA (A)	13.1	13.1	13.6	13.6
Locked Rotor Amps LRA (A)	117	117	117	117
Maximum Operating Current MOC (A)	21	21	21	21
Sound Power Level (dBA)	76	78	76	78

PERFORMANCE CURVE DATA

Standard: EN 12900 / w

50 Hz

	Evaporating Temperature (°C)	Cooling Capacity (w)	Power Consumption (W)	Efficiency (w/W)
35°C Condensing Temperature	10°C	36 033	6 991	5.15
	5°C	30 343	6 671	4.55
	0°C	25 527	6 410	3.98
	-5°C	21 457	6 188	3.47
	-10°C	18 002	5 988	3.01
	-15°C	15 035	5 792	2.60
	-20°C	12 425	5 580	2.23
	-25°C	10 044	5 336	1.88
	-30°C	7 762	5 041	1.54
45°C Condensing Temperature	10°C	30 193	7 980	3.78
	5°C	25 764	7 681	3.35
	0°C	21 980	7 433	2.96
	-5°C	18 711	7 216	2.59
	-10°C	15 829	7 014	2.26
	-15°C	13 204	6 807	1.94
	-20°C	10 708	6 578	1.63
	-25°C	8 210	6 308	1.30
	-30°C	5 582	5 980	0.93

	Evaporating Temperature (°C)	Cooling Capacity (w)	Power Consumption (W)	Efficiency (w/W)
55°C Condensing Temperature	10°C	24 143	9 564	2.52
	5°C	20 769	9 314	2.23
	0°C	17 810	9 106	1.96
	-5°C	15 137	8 923	1.70
	-10°C	12 621	8 746	1.44
	-15°C	10 133	8 558	1.18
	-20°C	7 544	8 340	0.90
	-25°C	4 724	8 073	0.59