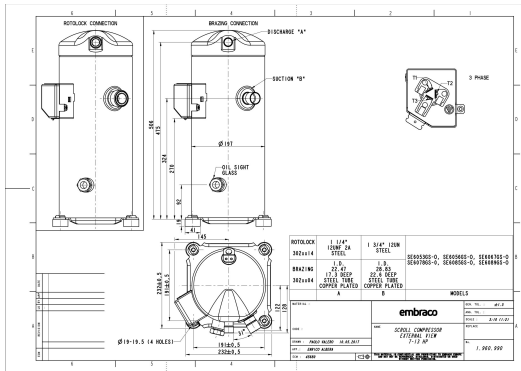


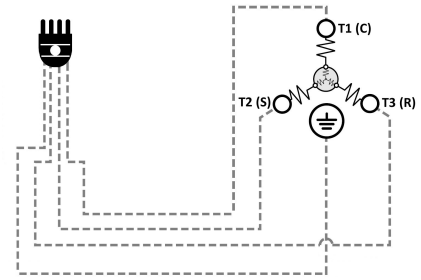
### GENERAL DATA

<b>Type:</b>	Hermetic Scroll Compressor
<b>Refrigerant:</b>	R404A
<b>Application:</b>	MBP
<b>Evaporating Temperature Range:</b>	-30°C to 10°C
<b>Voltage/Frequency:</b>	380 V 50 ~3 460 V 60 ~3
<b>Compressor Cooling:</b>	Static
<b>Technology Type:</b>	On-Off
<b>Tube connections:</b>	Brazing
<b>Packing Quantity:</b>	9
<b>Horse Power:</b>	8
<b>Oil Type:</b>	POE 32
<b>Oil Initial Charge volume:</b>	2.7 l
<b>Oil Recharge volume:</b>	2.6 l
<b>Free Internal Volume:</b>	6.5 l - 0.9 l
<b>Refrigerant Charge:</b>	8 l
<b>Institute Approvals:</b>	<b>CE</b>

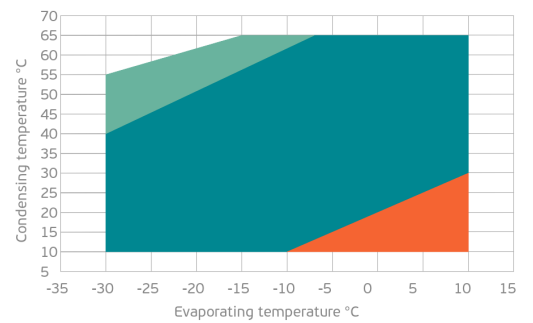
### EXTERNAL DIMENSIONS



### WIRING DIAGRAM



### OPERATING ENVELOPE



## MECHANICAL DATA

<b>Displacement:</b>	123 cm <sup>3</sup> /rev (21.4 m <sup>3</sup> /h)
<b>Maximum Recommended Refrigerant Charge:</b>	8 ml
<b>Weight:</b>	53 kg

At maximum evaporating temperature and maximum ambient temperature.

## ELECTRICAL DATA

<b>Motor Type:</b>	Induction motor -
<b>Pole:</b>	2 -
<b>Starting Torque:</b>	HST -
<b>Voltage Working Range 50Hz:</b>	342-462 V
<b>Voltage Working Range 60Hz:</b>	414-506 V
<b>Maximum Motor Temperature:</b>	130 °C
<b>Motor Insulation Class:</b>	B -
<b>Run Winding Resistance:</b>	1.09 Ω (± 10%) at 25°C
<b>Start Winding Resistance:</b>	- Ω (± 10%) at 25°C

At maximum evaporating temperature and maximum ambient temperature.

## ELECTRICAL COMPONENTS

	Component type	Description	Code
<b>Motor Protection:</b>	Internal protector	-	-
<b>Starting Device:</b>	-	-	-
<b>Start Capacitor:</b>	-	-	-
<b>Run Capacitor:</b>	-	-	-
<b>CSR Box:</b>	-	-	-

## ACCESSORIES

	Includes
<b>Cover:</b>	yes
<b>Cover Gasket:</b>	yes
<b>Grounding Screw:</b>	yes
<b>Liquid Injection:</b>	-
<b>Temperature Sensor:</b>	-
<b>Grommets:</b>	yes
<b>Sleeves:</b>	yes
<b>Crankcase Heater:</b>	90
<b>Noise Insulation:</b>	-
<b>Rotolock Valves:</b>	-
<b>Rotolock Adapter:</b>	-
<b>Service Valves:</b>	-

For additional accessories please contact our technical support

## EXTERNAL CHARACTERISTICS

<b>Base Plate Max Dimensions:</b>	232x232mm
<b>Base Plate Holes Interaxis:</b>	191x191mm
<b>Height:</b>	506mm
<b>Compressor Shell Diameter:</b>	197mm
<b>Hanger Tab:</b>	yes
<b>Oil Side Glass:</b>	yes

	Shape	Material	Internal Diameter (mm)
<b>Suction Connector</b>	Brazing	Copper plated steel tube	ID 28.83 mm
<b>Discharge Connector</b>	Brazing	Copper plated steel tube	ID 22.47 mm

## RATED POINTS

	380V 50Hz	460V 60Hz	380V 50Hz	460V 60Hz
<b>Conditions</b>	EN12900: Te -10°C; Tc 45°C; Rg 20°C; No subcooling; Ta 35°C	EN12900: Te -10°C; Tc 45°C; Rg 20°C; No subcooling; Ta 35°C	ARI540(2004): Te -6.7°C; Tc 48.9°C; Rg 4.4°C; No subcooling; Ta 35°C	ARI540(2004): Te -6.7°C; Tc 48.9°C; Rg 4.4°C; No subcooling; Ta 35°C
<b>Capacity (W)</b>	12919	15503	12893	15472
<b>Power Input (W)</b>	5866	7039	6447	7736
<b>COP (W/W)</b>	2.2	2.2	2	2
<b>Rated Load Amps RLA (A)</b>	11.6	11.6	12.1	12.1
<b>Locked Rotor Amps LRA (A)</b>	117	117	117	117
<b>Maximum Operating Current MOC (A)</b>	18.4	18.4	18.4	18.4
<b>Sound Power Level (dBA)</b>	75	77	75	77

**PERFORMANCE CURVE DATA**

Standard: EN 12900 / w

50 Hz

	Evaporating Temperature (°C)	Cooling Capacity (w)	Power Consumption (W)	Efficiency (w/W)
<b>35°C</b> Condensing Temperature	10°C	29 325	5 689	5.15
	5°C	24 694	5 429	4.55
	0°C	20 775	5 217	3.98
	-5°C	17 463	5 036	3.47
	-10°C	14 651	4 873	3.01
	-15°C	12 236	4 713	2.60
	-20°C	10 112	4 541	2.23
	-25°C	8 174	4 343	1.88
	-30°C	6 317	4 102	1.54
<b>45°C</b> Condensing Temperature	10°C	24 573	6 494	3.78
	5°C	20 968	6 251	3.35
	0°C	17 888	6 049	2.96
	-5°C	15 228	5 873	2.59
	-10°C	12 883	5 708	2.26
	-15°C	10 746	5 540	1.94
	-20°C	8 714	5 353	1.63
	-25°C	6 681	5 134	1.30
	-30°C	4 543	4 867	0.93

	Evaporating Temperature (°C)	Cooling Capacity (w)	Power Consumption (W)	Efficiency (w/W)
55°C Condensing Temperature	10°C	19 649	7 783	2.52
	5°C	16 903	7 580	2.23
	0°C	14 495	7 411	1.96
	-5°C	12 319	7 262	1.70
	-10°C	10 272	7 118	1.44
	-15°C	8 247	6 965	1.18
	-20°C	6 140	6 787	0.90
	-25°C	3 844	6 570	0.59