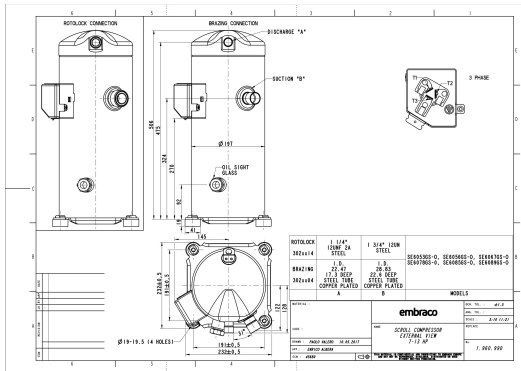


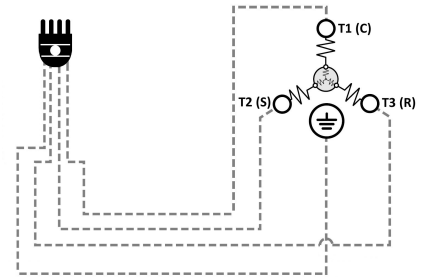
### GENERAL DATA

<b>Type:</b>	Hermetic Scroll Compressor
<b>Refrigerant:</b>	R404A
<b>Application:</b>	MBP
<b>Evaporating Temperature Range:</b>	-30°C to 10°C
<b>Voltage/Frequency:</b>	380 V 50 ~3 460 V 60 ~3
<b>Compressor Cooling:</b>	Static
<b>Technology Type:</b>	On-Off
<b>Tube connections:</b>	Rotolock
<b>Packing Quantity:</b>	9
<b>Horse Power:</b>	7
<b>Oil Type:</b>	POE 32
<b>Oil Initial Charge volume:</b>	2.7 l
<b>Oil Recharge volume:</b>	2.6 l
<b>Free Internal Volume:</b>	7.3 l - 0.9 l
<b>Refrigerant Charge:</b>	6.5 l
<b>Institute Approvals:</b>	<b>CE</b>

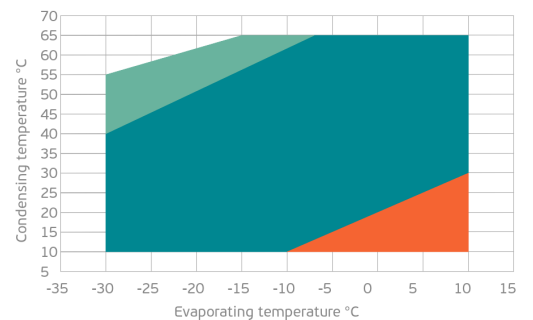
### EXTERNAL DIMENSIONS



### WIRING DIAGRAM



### OPERATING ENVELOPE



## MECHANICAL DATA

<b>Displacement:</b>	115.5 cm <sup>3</sup> /rev (20.1 m <sup>3</sup> /h)
<b>Maximum Recommended Refrigerant Charge:</b>	6.5 ml
<b>Weight:</b>	53 kg

At maximum evaporating temperature and maximum ambient temperature.

## ELECTRICAL DATA

<b>Motor Type:</b>	Induction motor -
<b>Pole:</b>	2 -
<b>Starting Torque:</b>	HST -
<b>Voltage Working Range 50Hz:</b>	342-462 V
<b>Voltage Working Range 60Hz:</b>	414-506 V
<b>Maximum Motor Temperature:</b>	130 °C
<b>Motor Insulation Class:</b>	B -
<b>Run Winding Resistance:</b>	1.09 Ω (± 10%) at 25°C
<b>Start Winding Resistance:</b>	- Ω (± 10%) at 25°C

At maximum evaporating temperature and maximum ambient temperature.

## ELECTRICAL COMPONENTS

	Component type	Description	Code
<b>Motor Protection:</b>	Internal protector	-	-
<b>Starting Device:</b>	-	-	-
<b>Start Capacitor:</b>	-	-	-
<b>Run Capacitor:</b>	-	-	-
<b>CSR Box:</b>	-	-	-

## ACCESSORIES

	Includes
<b>Cover:</b>	yes
<b>Cover Gasket:</b>	yes
<b>Grounding Screw:</b>	yes
<b>Liquid Injection:</b>	-
<b>Temperature Sensor:</b>	-
<b>Grommets:</b>	yes
<b>Sleeves:</b>	yes
<b>Crankase Heater:</b>	90
<b>Noise Insulation:</b>	-
<b>Rotolock Valves:</b>	-
<b>Rotolock Adapter:</b>	-
<b>Service Valves:</b>	-

For additional accessories please contact our technical support

## EXTERNAL CHARACTERISTICS

<b>Base Plate Max Dimensions:</b>	232x232mm
<b>Base Plate Holes Interaxis:</b>	191x191mm
<b>Height:</b>	506mm
<b>Compressor Shell Diameter:</b>	197mm
<b>Hanger Tab:</b>	yes
<b>Oil Side Glass:</b>	yes

	Shape	Material	Internal Diameter (mm)
<b>Suction Connector</b>	Rotolock	Copper plated steel tube	1 3/4"-12UN
<b>Discharge Connector</b>	Rotolock	Copper plated steel tube	1 1/4"-12 UNF 2A

**RATED POINTS**

	380V 50Hz	460V 60Hz	380V 50Hz	460V 60Hz
<b>Conditions</b>	EN12900: Te -10°C; Tc 45°C; Rg 20°C; No subcooling; Ta 35°C	EN12900: Te -10°C; Tc 45°C; Rg 20°C; No subcooling; Ta 35°C	ARI540(2004): Te -6.7°C; Tc 48.9°C; Rg 4.4°C; No subcooling; Ta 35°C	ARI540(2004): Te -6.7°C; Tc 48.9°C; Rg 4.4°C; No subcooling; Ta 35°C
<b>Capacity (W)</b>	12264	14717	12240	14688
<b>Power Input (W)</b>	5569	6683	6120	7344
<b>COP (W/W)</b>	2.2	2.2	2	2
<b>Rated Load Amps RLA (A)</b>	11.2	11.2	11.8	11.8
<b>Locked Rotor Amps LRA (A)</b>	117	117	117	117
<b>Maximum Operating Current MOC (A)</b>	17.3	17.3	17.3	17.3
<b>Sound Power Level (dBA)</b>	75	77	75	77

**PERFORMANCE CURVE DATA**

Standard: EN 12900 / w

50 Hz

	Evaporating Temperature (°C)	Cooling Capacity (w)	Power Consumption (W)	Efficiency (w/W)
<b>35°C</b> Condensing Temperature	10°C	27 838	5 401	5.15
	5°C	23 442	5 154	4.55
	0°C	19 722	4 953	3.98
	-5°C	16 577	4 781	3.47
	-10°C	13 908	4 627	3.01
	-15°C	11 616	4 475	2.60
	-20°C	9 599	4 311	2.23
	-25°C	7 760	4 123	1.88
	-30°C	5 997	3 895	1.54
<b>45°C</b> Condensing Temperature	10°C	23 327	6 166	3.78
	5°C	19 905	5 935	3.35
	0°C	16 981	5 743	2.96
	-5°C	14 456	5 575	2.59
	-10°C	12 229	5 419	2.26
	-15°C	10 201	5 259	1.94
	-20°C	8 272	5 082	1.63
	-25°C	6 343	4 874	1.30
	-30°C	4 312	4 620	0.93

	Evaporating Temperature (°C)	Cooling Capacity (w)	Power Consumption (W)	Efficiency (w/W)
55°C Condensing Temperature	10°C	18 652	7 389	2.52
	5°C	16 046	7 196	2.23
	0°C	13 760	7 036	1.96
	-5°C	11 695	6 894	1.70
	-10°C	9 751	6 758	1.44
	-15°C	7 829	6 612	1.18
	-20°C	5 828	6 443	0.90
	-25°C	3 650	6 237	0.59