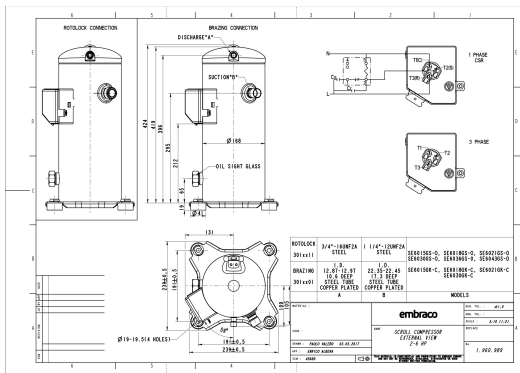


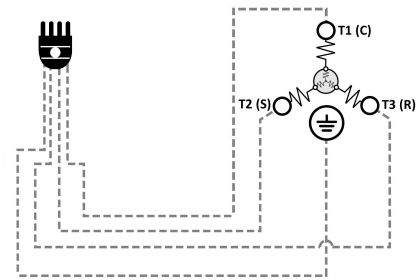
GENERAL DATA

Type:	Hermetic Scroll Compressor
Refrigerant:	R404A
Application:	MBP
Evaporating Temperature Range:	-30°C to 10°C
Voltage/Frequency:	380-420 V 50 ~3 460 V 60 ~3
Compressor Cooling:	Static
Technology Type:	Hermetic Scroll Compressor
Tube connections:	Rotolock
Packing Quantity:	9
Horse Power:	6
Oil Type:	POE 32
Oil Initial Charge volume:	1.4 l
Oil Recharge volume:	1.25 l
Free Internal Volume:	3.2 l - 1 l
Refrigerant Charge:	5.5 l
Institute Approvals:	CE

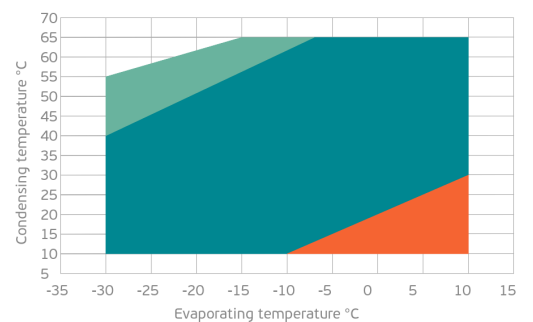
EXTERNAL DIMENSIONS



WIRING DIAGRAM



OPERATING ENVELOPE



MECHANICAL DATA

Displacement:	98.3 cm ³ /rev (17.1 m ³ /h)
Maximum Recommended Refrigerant Charge:	5.5 ml
Weight:	33 kg

At maximum evaporating temperature and maximum ambient temperature.

ELECTRICAL DATA

Motor Type:	Induction motor -
Pole:	2 -
Starting Torque:	HST -
Voltage Working Range 50Hz:	342-462 V
Voltage Working Range 60Hz:	414-506 V
Maximum Motor Temperature:	130 °C
Motor Insulation Class:	B -
Run Winding Resistance:	1.9 Ω (± 10%) at 25°C
Start Winding Resistance:	- Ω (± 10%) at 25°C

At maximum evaporating temperature and maximum ambient temperature.

ELECTRICAL COMPONENTS

	Component type	Description	Code
Motor Protection:	Internal Protector	-	-
Starting Device:	-	-	-
Start Capacitor:	-	-	-
Run Capacitor:	-	-	-
CSR Box:	-	-	-

ACCESSORIES

	Includes
Cover:	yes
Cover Gasket:	yes
Grounding Screw:	yes
Liquid Injection:	-
Temperature Sensor:	-
Grommets:	yes
Sleeves:	yes
Crankcase Heater:	70
Noise Insulation:	-
Rotolock Valves:	-
Rotolock Adapter:	-
Service Valves:	-

For additional accessories please contact our technical support

EXTERNAL CHARACTERISTICS

Base Plate Max Dimensions:	239x239mm
Base Plate Holes Interaxis:	191x191mm
Height:	419mm
Compressor Shell Diameter:	168mm
Hanger Tab:	yes
Oil Side Glass:	yes

	Shape	Material	Internal Diameter (mm)
Suction Connector	Rotolock	Copper plated steel tube	1 1/4"-12 UNF 2A
Discharge Connector	Rotolock	Copper plated steel tube	3/4"-16 UNF 2A

RATED POINTS

	380V 50Hz	460V 60Hz	380V 50Hz	460V 60Hz
Conditions	EN12900: Te -10°C; Tc 45°C; Rg 20°C; No subcooling; Ta 35°C	EN12900: Te -10°C; Tc 45°C; Rg 20°C; No subcooling; Ta 35°C	ARI540(2004): Te -6.7°C; Tc 48.9°C; Rg 4.4°C; No subcooling; Ta 35°C	ARI540(2004): Te -6.7°C; Tc 48.9°C; Rg 4.4°C; No subcooling; Ta 35°C
Capacity (W)	10120	12144	10100	12120
Power Input (W)	4596	5515	5050	6060
COP (W/W)	2.2	2.2	2	2
Rated Load Amps RLA (A)	8.6	8.6	9.4	9.4
Locked Rotor Amps LRA (A)	65	65	65	65
Maximum Operating Current MOC (A)	14.3	14.3	14.3	14.3
Sound Power Level (dBA)	74	76	74	76

PERFORMANCE CURVE DATA

Standard: EN12900 / w

50 Hz

	Evaporating Temperature (°C)	Cooling Capacity (w)	Power Consumption (W)	Efficiency (w/W)
35°C Condensing Temperature	10°C	22972	4457	5.15
	5°C	19344	4254	4.55
	0°C	16274	4087	3.98
	-5°C	13679	3946	3.47
	-10°C	11477	3818	3.01
	-15°C	9585	3693	2.60
	-20°C	7921	3558	2.23
	-25°C	6403	3402	1.88
	-30°C	4948	3214	1.54
45°C Condensing Temperature	10°C	19249	5088	3.78
	5°C	16425	4898	3.35
	0°C	14013	4739	2.96
	-5°C	11929	4601	2.59
	-10°C	10091	4472	2.26
	-15°C	8418	4340	1.94
	-20°C	6826	4194	1.63
	-25°C	5234	4022	1.30
	-30°C	3559	3813	0.93

	Evaporating Temperature (°C)	Cooling Capacity (w)	Power Consumption (W)	Efficiency (w/W)
55°C Condensing Temperature	10°C	15392	6098	2.52
	5°C	13241	5939	2.23
	0°C	11354	5806	1.96
	-5°C	9650	5690	1.70
	-10°C	8046	5577	1.44
	-15°C	6460	5457	1.18
	-20°C	4809	5318	0.90
	-25°C	3011	5148	0.58