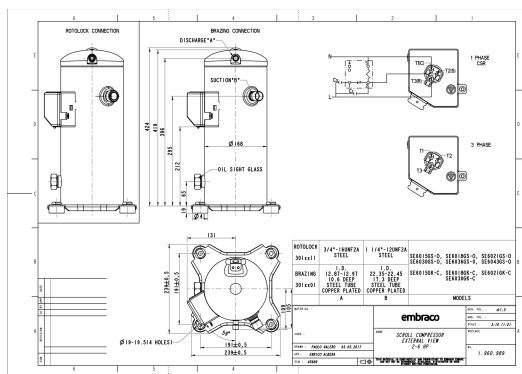


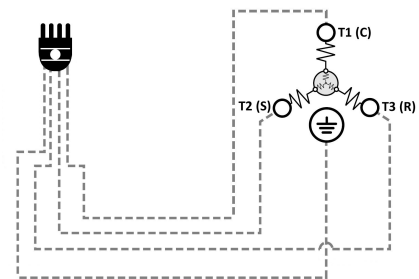
### GENERAL DATA

<b>Type:</b>	Hermetic Scroll Compressor
<b>Refrigerant:</b>	R404A
<b>Application:</b>	MBP
<b>Evaporating Temperature Range:</b>	-30°C to 10°C
<b>Voltage/Frequency:</b>	380-420 V 50 ~3 460 V 60 ~3
<b>Compressor Cooling:</b>	Static
<b>Technology Type:</b>	Hermetic Scroll Compressor
<b>Tube connections:</b>	Brazing
<b>Packing Quantity:</b>	9
<b>Horse Power:</b>	6
<b>Oil Type:</b>	POE 32
<b>Oil Initial Charge volume:</b>	1.4 l
<b>Oil Recharge volume:</b>	1.25 l
<b>Free Internal Volume:</b>	3.2 l - 1 l
<b>Refrigerant Charge:</b>	5.5 l
<b>Institute Approvals:</b>	<b>CE</b>

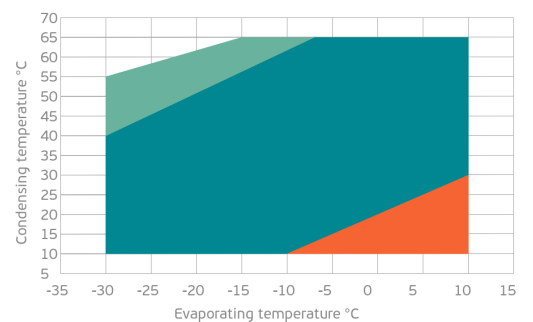
### EXTERNAL DIMENSIONS



### WIRING DIAGRAM



### OPERATING ENVELOPE



## MECHANICAL DATA

<b>Displacement:</b>	98.3 cm <sup>3</sup> /rev (17.1 m <sup>3</sup> /h)
<b>Maximum Recommended Refrigerant Charge:</b>	5.5 ml
<b>Weight:</b>	33 kg

At maximum evaporating temperature and maximum ambient temperature.

## ELECTRICAL DATA

<b>Motor Type:</b>	Induction motor -
<b>Pole:</b>	2 -
<b>Starting Torque:</b>	HST -
<b>Voltage Working Range 50Hz:</b>	342-462 V
<b>Voltage Working Range 60Hz:</b>	414-506 V
<b>Maximum Motor Temperature:</b>	130 °C
<b>Motor Insulation Class:</b>	B -
<b>Run Winding Resistance:</b>	1.9 Ω (± 10%) at 25°C
<b>Start Winding Resistance:</b>	- Ω (± 10%) at 25°C

At maximum evaporating temperature and maximum ambient temperature.

## ELECTRICAL COMPONENTS

	Component type	Description	Code
<b>Motor Protection:</b>	Internal Protector	-	-
<b>Starting Device:</b>	-	-	-
<b>Start Capacitor:</b>	-	-	-
<b>Run Capacitor:</b>	-	-	-
<b>CSR Box:</b>	-	-	-

## ACCESSORIES

	Includes
<b>Cover:</b>	yes
<b>Cover Gasket:</b>	yes
<b>Grounding Screw:</b>	yes
<b>Liquid Injection:</b>	-
<b>Temperature Sensor:</b>	-
<b>Grommets:</b>	yes
<b>Sleeves:</b>	yes
<b>Crankcase Heater:</b>	70
<b>Noise Insulation:</b>	-
<b>Rotolock Valves:</b>	-
<b>Rotolock Adapter:</b>	-
<b>Service Valves:</b>	-

For additional accessories please contact our technical support

## EXTERNAL CHARACTERISTICS

<b>Base Plate Max Dimensions:</b>	239x239mm
<b>Base Plate Holes Interaxis:</b>	191x191mm
<b>Height:</b>	419mm
<b>Compressor Shell Diameter:</b>	168mm
<b>Hanger Tab:</b>	yes
<b>Oil Side Glass:</b>	yes

	Shape	Material	Internal Diameter (mm)
<b>Suction Connector</b>	Brazing	Copper plated steel tube	ID 22.4 mm
<b>Discharge Connector</b>	Brazing	Copper plated steel tube	ID 12.92 mm

**RATED POINTS**

	380V 50Hz	460V 60Hz	380V 50Hz	460V 60Hz
<b>Conditions</b>	EN12900: Te -10°C; Tc 45°C; Rg 20°C; No subcooling; Ta 35°C	EN12900: Te -10°C; Tc 45°C; Rg 20°C; No subcooling; Ta 35°C	ARI540(2004): Te -6.7°C; Tc 48.9°C; Rg 4.4°C; No subcooling; Ta 35°C	ARI540(2004): Te -6.7°C; Tc 48.9°C; Rg 4.4°C; No subcooling; Ta 35°C
<b>Capacity (W)</b>	10120	12144	10100	12120
<b>Power Input (W)</b>	4596	5515	5050	6060
<b>COP (W/W)</b>	2.2	2.2	2	2
<b>Rated Load Amps RLA (A)</b>	8.6	8.6	9.4	9.4
<b>Locked Rotor Amps LRA (A)</b>	65	65	65	65
<b>Maximum Operating Current MOC (A)</b>	14.3	14.3	14.3	14.3
<b>Sound Power Level (dBA)</b>	74	76	74	76

**PERFORMANCE CURVE DATA**

Standard: EN12900 / w

50 Hz

	Evaporating Temperature (°C)	Cooling Capacity (w)	Power Consumption (W)	Efficiency (w/W)
<b>35°C</b> Condensing Temperature	10°C	22972	4457	5.15
	5°C	19344	4254	4.55
	0°C	16274	4087	3.98
	-5°C	13679	3946	3.47
	-10°C	11477	3818	3.01
	-15°C	9585	3693	2.60
	-20°C	7921	3558	2.23
	-25°C	6403	3402	1.88
	-30°C	4948	3214	1.54
<b>45°C</b> Condensing Temperature	10°C	19249	5088	3.78
	5°C	16425	4898	3.35
	0°C	14013	4739	2.96
	-5°C	11929	4601	2.59
	-10°C	10091	4472	2.26
	-15°C	8418	4340	1.94
	-20°C	6826	4194	1.63
	-25°C	5234	4022	1.30
	-30°C	3559	3813	0.93

	Evaporating Temperature (°C)	Cooling Capacity (w)	Power Consumption (W)	Efficiency (w/W)
55°C Condensing Temperature	10°C	15392	6098	2.52
	5°C	13241	5939	2.23
	0°C	11354	5806	1.96
	-5°C	9650	5690	1.70
	-10°C	8046	5577	1.44
	-15°C	6460	5457	1.18
	-20°C	4809	5318	0.90
	-25°C	3011	5148	0.58