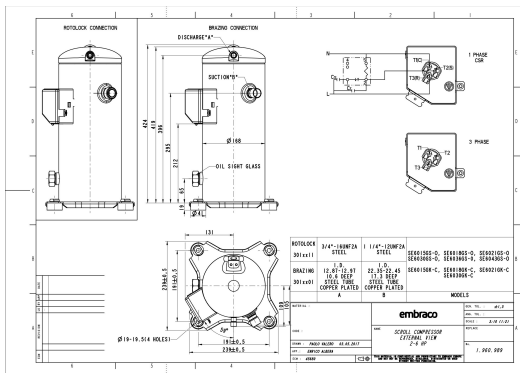


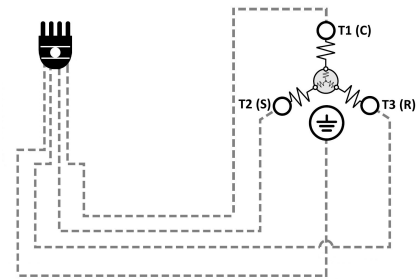
GENERAL DATA

Type:	Hermetic Scroll Compressor
Refrigerant:	R404A
Application:	MBP
Evaporating Temperature Range:	-30°C to 10°C
Voltage/Frequency:	380-420 V 50 ~3 460 V 60 ~3
Compressor Cooling:	Static
Technology Type:	Hermetic Scroll Compressor
Tube connections:	Rotolock
Packing Quantity:	9
Horse Power:	5
Oil Type:	POE 32
Oil Initial Charge volume:	1.4 l
Oil Recharge volume:	1.25 l
Free Internal Volume:	3.6 l - 1 l
Refrigerant Charge:	4.5 l
Institute Approvals:	CE

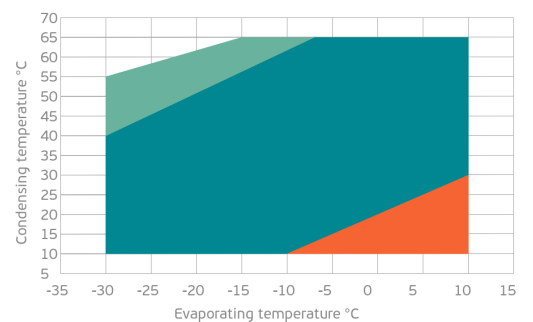
EXTERNAL DIMENSIONS



WIRING DIAGRAM



OPERATING ENVELOPE



MECHANICAL DATA

Displacement:	83.3 cm ³ /rev (14.5 m ³ /h)
Maximum Recommended Refrigerant Charge:	4.5 ml
Weight:	31 kg

At maximum evaporating temperature and maximum ambient temperature.

ELECTRICAL DATA

Motor Type:	Induction motor -
Pole:	2 -
Starting Torque:	HST -
Voltage Working Range 50Hz:	342-462 V
Voltage Working Range 60Hz:	414-506 V
Maximum Motor Temperature:	130 °C
Motor Insulation Class:	B -
Run Winding Resistance:	2.45 Ω (± 10%) at 25°C
Start Winding Resistance:	- Ω (± 10%) at 25°C

At maximum evaporating temperature and maximum ambient temperature.

ELECTRICAL COMPONENTS

	Component type	Description	Code
Motor Protection:	Internal Protector	-	-
Starting Device:	-	-	-
Start Capacitor:	-	-	-
Run Capacitor:	-	-	-
CSR Box:	-	-	-

ACCESSORIES

	Includes
Cover:	yes
Cover Gasket:	yes
Grounding Screw:	yes
Liquid Injection:	-
Temperature Sensor:	-
Grommets:	yes
Sleeves:	yes
Crankcase Heater:	70
Noise Insulation:	-
Rotolock Valves:	-
Rotolock Adapter:	-
Service Valves:	-

For additional accessories please contact our technical support

EXTERNAL CHARACTERISTICS

Base Plate Max Dimensions:	239x239mm
Base Plate Holes Interaxis:	191x191mm
Height:	419mm
Compressor Shell Diameter:	168mm
Hanger Tab:	yes
Oil Side Glass:	yes

	Shape	Material	Internal Diameter (mm)
Suction Connector	Rotolock	Copper plated steel tube	1 1/4"-12 UNF 2A
Discharge Connector	Rotolock	Copper plated steel tube	3/4"-16 UNF 2A



RATED POINTS

	380V 50Hz	460V 60Hz	380V 50Hz	460V 60Hz
Conditions	EN12900: Te -10°C; Tc 45°C; Rg 20°C; No subcooling; Ta 35°C	EN12900: Te -10°C; Tc 45°C; Rg 20°C; No subcooling; Ta 35°C	ARI540(2004): Te -6.7°C; Tc 48.9°C; Rg 4.4°C; No subcooling; Ta 35°C	ARI540(2004): Te -6.7°C; Tc 48.9°C; Rg 4.4°C; No subcooling; Ta 35°C
Capacity (W)	8517	10220	8500	10200
Power Input (W)	3868	4642	4250	5100
COP (W/W)	2.2	2.2	2	2
Rated Load Amps RLA (A)	7.6	7.6	8	8
Locked Rotor Amps LRA (A)	60	60	60	60
Maximum Operating Current MOC (A)	12.2	12.2	12.2	12.2
Sound Power Level (dBA)	73	75	73	75

PERFORMANCE CURVE DATA

Standard: EN12900 / w

50 Hz

	Evaporating Temperature (°C)	Cooling Capacity (w)	Power Consumption (W)	Efficiency (w/W)
35°C Condensing Temperature	10°C	19608	3835	5.11
	5°C	16512	3660	4.51
	0°C	13891	3516	3.95
	-5°C	11676	3395	3.44
	-10°C	9796	3285	2.98
	-15°C	8182	3177	2.58
	-20°C	6761	3061	2.21
	-25°C	5466	2927	1.87
	-30°C	4224	2765	1.53
45°C Condensing Temperature	10°C	16431	4378	3.75
	5°C	14020	4214	3.33
	0°C	11961	4077	2.93
	-5°C	10182	3959	2.57
	-10°C	8614	3848	2.24
	-15°C	7185	3734	1.92
	-20°C	5827	3608	1.62
	-25°C	4468	3461	1.29
	-30°C	3037	3281	0.93

	Evaporating Temperature (°C)	Cooling Capacity (w)	Power Consumption (W)	Efficiency (w/W)
55°C Condensing Temperature	10°C	13138	5246	2.50
	5°C	11302	5109	2.21
	0°C	9692	4995	1.94
	-5°C	8237	4895	1.68
	-10°C	6868	4798	1.43
	-15°C	5514	4695	1.17
	-20°C	4105	4575	0.90
	-25°C	2571	4429	0.58