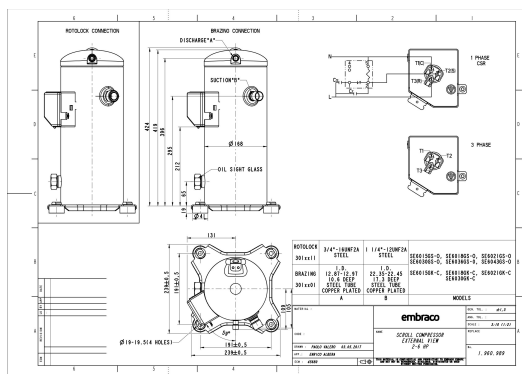


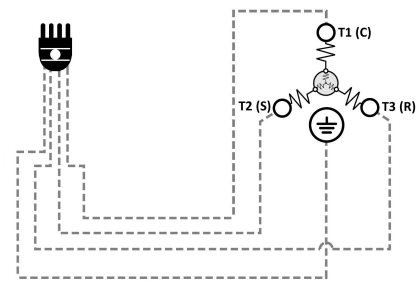
GENERAL DATA

Type:	Hermetic Scroll Compressor
Refrigerant:	R404A
Application:	MBP
Evaporating Temperature Range:	-30°C to 10°C
Voltage/Frequency:	380-420 V 50 ~3 460 V 60 ~3
Compressor Cooling:	Static
Technology Type:	Hermetic Scroll Compressor
Tube connections:	Brazing
Packing Quantity:	9
Horse Power:	5
Oil Type:	POE 32
Oil Initial Charge volume:	1.4 l
Oil Recharge volume:	1.25 l
Free Internal Volume:	3.6 l - 1 l
Refrigerant Charge:	4.5 l
Institute Approvals:	CE

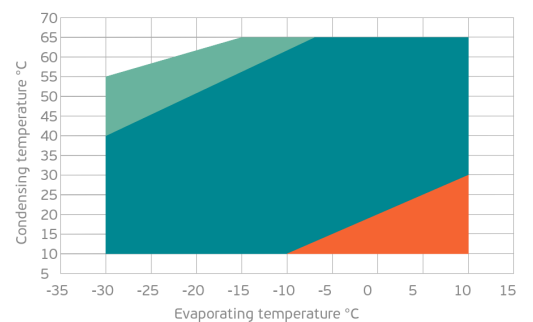
EXTERNAL DIMENSIONS



WIRING DIAGRAM



OPERATING ENVELOPE



MECHANICAL DATA

Displacement:	83.3 cm ³ /rev (14.5 m ³ /h)
Maximum Recommended Refrigerant Charge:	4.5 ml
Weight:	31 kg

At maximum evaporating temperature and maximum ambient temperature.

ELECTRICAL DATA

Motor Type:	Induction motor -
Pole:	2 -
Starting Torque:	HST -
Voltage Working Range 50Hz:	342-462 V
Voltage Working Range 60Hz:	414-506 V
Maximum Motor Temperature:	130 °C
Motor Insulation Class:	B -
Run Winding Resistance:	2.45 Ω (± 10%) at 25°C
Start Winding Resistance:	- Ω (± 10%) at 25°C

At maximum evaporating temperature and maximum ambient temperature.

ELECTRICAL COMPONENTS

	Component type	Description	Code
Motor Protection:	Internal Protector	-	-
Starting Device:	-	-	-
Start Capacitor:	-	-	-
Run Capacitor:	-	-	-
CSR Box:	-	-	-

ACCESSORIES

	Includes
Cover:	yes
Cover Gasket:	yes
Grounding Screw:	yes
Liquid Injection:	-
Temperature Sensor:	-
Grommets:	yes
Sleeves:	yes
Crankcase Heater:	70
Noise Insulation:	-
Rotolock Valves:	-
Rotolock Adapter:	-
Service Valves:	-

For additional accessories please contact our technical support

EXTERNAL CHARACTERISTICS

Base Plate Max Dimensions:	239x239mm
Base Plate Holes Interaxis:	191x191mm
Height:	419mm
Compressor Shell Diameter:	168mm
Hanger Tab:	yes
Oil Side Glass:	yes

	Shape	Material	Internal Diameter (mm)
Suction Connector	Brazing	Copper plated steel tube	ID 22.4 mm
Discharge Connector	Brazing	Copper plated steel tube	ID 12.92 mm

RATED POINTS

	380V 50Hz	460V 60Hz	380V 50Hz	460V 60Hz
Conditions	EN12900: Te -10°C; Tc 45°C; Rg 20°C; No subcooling; Ta 35°C	EN12900: Te -10°C; Tc 45°C; Rg 20°C; No subcooling; Ta 35°C	ARI540(2004): Te -6.7°C; Tc 48.9°C; Rg 4.4°C; No subcooling; Ta 35°C	ARI540(2004): Te -6.7°C; Tc 48.9°C; Rg 4.4°C; No subcooling; Ta 35°C
Capacity (W)	8517	10220	8500	10200
Power Input (W)	3868	4642	4250	5100
COP (W/W)	2.2	2.2	2	2
Rated Load Amps RLA (A)	7.6	7.6	8	8
Locked Rotor Amps LRA (A)	60	60	60	60
Maximum Operating Current MOC (A)	12.2	12.2	12.2	12.2
Sound Power Level (dBA)	73	75	73	75

PERFORMANCE CURVE DATA

Standard: EN12900 / w

50 Hz

	Evaporating Temperature (°C)	Cooling Capacity (w)	Power Consumption (W)	Efficiency (w/W)
35°C Condensing Temperature	10°C	19608	3835	5.11
	5°C	16512	3660	4.51
	0°C	13891	3516	3.95
	-5°C	11676	3395	3.44
	-10°C	9796	3285	2.98
	-15°C	8182	3177	2.58
	-20°C	6761	3061	2.21
	-25°C	5466	2927	1.87
	-30°C	4224	2765	1.53
45°C Condensing Temperature	10°C	16431	4378	3.75
	5°C	14020	4214	3.33
	0°C	11961	4077	2.93
	-5°C	10182	3959	2.57
	-10°C	8614	3848	2.24
	-15°C	7185	3734	1.92
	-20°C	5827	3608	1.62
	-25°C	4468	3461	1.29
	-30°C	3037	3281	0.93

	Evaporating Temperature (°C)	Cooling Capacity (w)	Power Consumption (W)	Efficiency (w/W)
55°C Condensing Temperature	10°C	13138	5246	2.50
	5°C	11302	5109	2.21
	0°C	9692	4995	1.94
	-5°C	8237	4895	1.68
	-10°C	6868	4798	1.43
	-15°C	5514	4695	1.17
	-20°C	4105	4575	0.90
	-25°C	2571	4429	0.58