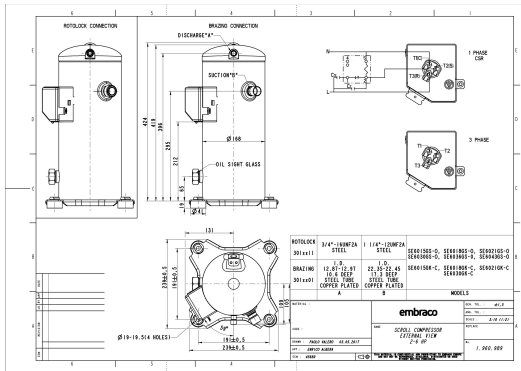


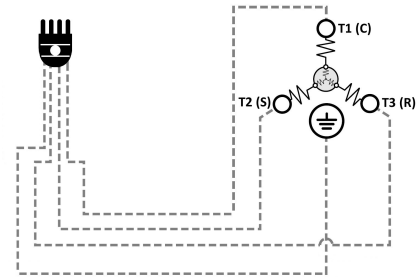
GENERAL DATA

Type:	Hermetic Scroll Compressor
Refrigerant:	R404A
Application:	MBP
Evaporating Temperature Range:	-30°C to 10°C
Voltage/Frequency:	380-420 V 50 ~3 460 V 60 ~3
Compressor Cooling:	Static
Technology Type:	Hermetic Scroll Compressor
Tube connections:	Rotolock
Packing Quantity:	9
Horse Power:	4
Oil Type:	POE 32
Oil Initial Charge volume:	1.4 l
Oil Recharge volume:	1.25 l
Free Internal Volume:	3.6 l - 1 l
Refrigerant Charge:	4.5 l
Institute Approvals:	CE

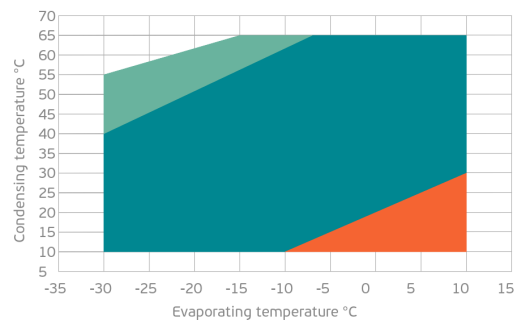
EXTERNAL DIMENSIONS



WIRING DIAGRAM



OPERATING ENVELOPE



MECHANICAL DATA

Displacement:	67.8 cm ³ /rev (11.8 m ³ /h)
Maximum Recommended Refrigerant Charge:	4.5 ml
Weight:	31 kg

At maximum evaporating temperature and maximum ambient temperature.

ELECTRICAL DATA

Motor Type:	Induction motor -
Pole:	2 -
Starting Torque:	HST -
Voltage Working Range 50Hz:	342-462 V
Voltage Working Range 60Hz:	414-506 V
Maximum Motor Temperature:	130 °C
Motor Insulation Class:	B -
Run Winding Resistance:	2.45 Ω (± 10%) at 25°C
Start Winding Resistance:	- Ω (± 10%) at 25°C

At maximum evaporating temperature and maximum ambient temperature.

ELECTRICAL COMPONENTS

	Component type	Description	Code
Motor Protection:	Internal Protector	-	-
Starting Device:	-	-	-
Start Capacitor:	-	-	-
Run Capacitor:	-	-	-
CSR Box:	-	-	-

ACCESSORIES

	Includes
Cover:	yes
Cover Gasket:	yes
Grounding Screw:	yes
Liquid Injection:	-
Temperature Sensor:	-
Grommets:	yes
Sleeves:	yes
Crankcase Heater:	70
Noise Insulation:	-
Rotolock Valves:	-
Rotolock Adapter:	-
Service Valves:	-

For additional accessories please contact our technical support

EXTERNAL CHARACTERISTICS

Base Plate Max Dimensions:	239x239mm
Base Plate Holes Interaxis:	191x191mm
Height:	419mm
Compressor Shell Diameter:	168mm
Hanger Tab:	yes
Oil Side Glass:	yes

	Shape	Material	Internal Diameter (mm)
Suction Connector	Rotolock	Copper plated steel tube	1 1/4"-12 UNF 2A
Discharge Connector	Rotolock	Copper plated steel tube	3/4"-16 UNF 2A



RATED POINTS

	380V 50Hz	460V 60Hz	380V 50Hz	460V 60Hz
Conditions	EN12900: Te -10°C; Tc 45°C; Rg 20°C; No subcooling; Ta 35°C	EN12900: Te -10°C; Tc 45°C; Rg 20°C; No subcooling; Ta 35°C	ARI540(2004): Te -6.7°C; Tc 48.9°C; Rg 4.4°C; No subcooling; Ta 35°C	ARI540(2004): Te -6.7°C; Tc 48.9°C; Rg 4.4°C; No subcooling; Ta 35°C
Capacity (W)	6934	8321	6920	8304
Power Input (W)	3212	3854	3530	4236
COP (W/W)	2.16	2.16	1.96	1.96
Rated Load Amps RLA (A)	6.6	6.6	7	7
Locked Rotor Amps LRA (A)	60	60	60	60
Maximum Operating Current MOC (A)	10.3	10.3	10.3	10.3
Sound Power Level (dBA)	73	75	73	75

PERFORMANCE CURVE DATA

Standard: EN12900 / w

50 Hz

	Evaporating Temperature (°C)	Cooling Capacity (w)	Power Consumption (W)	Efficiency (w/W)
35°C Condensing Temperature	10°C	16529	3340	4.95
	5°C	13919	3187	4.37
	0°C	11710	3062	3.82
	-5°C	9843	2956	3.33
	-10°C	8258	2861	2.89
	-15°C	6897	2767	2.49
	-20°C	5700	2666	2.14
	-25°C	4607	2549	1.81
	-30°C	3560	2408	1.48
45°C Condensing Temperature	10°C	13850	3812	3.63
	5°C	11819	3670	3.22
	0°C	10083	3551	2.84
	-5°C	8583	3447	2.49
	-10°C	7261	3351	2.17
	-15°C	6057	3252	1.86
	-20°C	4912	3142	1.56
	-25°C	3766	3014	1.25
	-30°C	2561	2857	0.90

	Evaporating Temperature (°C)	Cooling Capacity (w)	Power Consumption (W)	Efficiency (w/W)
55°C Condensing Temperature	10°C	11075	4569	2.42
	5°C	9528	4449	2.14
	0°C	8170	4350	1.88
	-5°C	6944	4263	1.63
	-10°C	5790	4178	1.39
	-15°C	4649	4088	1.14
	-20°C	3461	3984	0.87
	-25°C	2167	3857	0.56