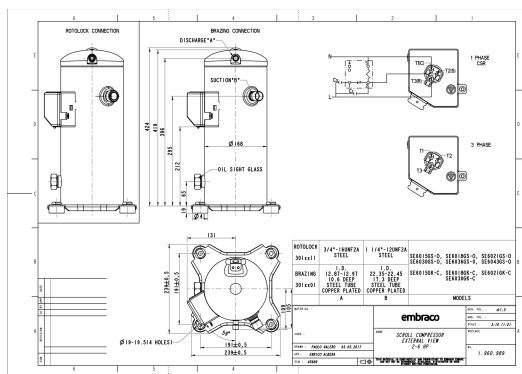


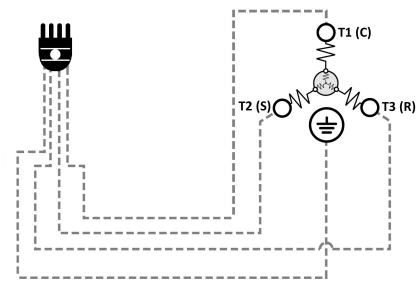
### GENERAL DATA

<b>Type:</b>	Hermetic Scroll Compressor
<b>Refrigerant:</b>	R404A
<b>Application:</b>	MBP
<b>Evaporating Temperature Range:</b>	-30°C to 10°C
<b>Voltage/Frequency:</b>	380-420 V 50 ~3 460 V 60 ~3
<b>Compressor Cooling:</b>	Static
<b>Technology Type:</b>	Hermetic Scroll Compressor
<b>Tube connections:</b>	Brazing
<b>Packing Quantity:</b>	9
<b>Horse Power:</b>	4
<b>Oil Type:</b>	POE 32
<b>Oil Initial Charge volume:</b>	1.4 l
<b>Oil Recharge volume:</b>	1.25 l
<b>Free Internal Volume:</b>	3.6 l - 1 l
<b>Refrigerant Charge:</b>	4.5 l
<b>Institute Approvals:</b>	<b>CE</b>

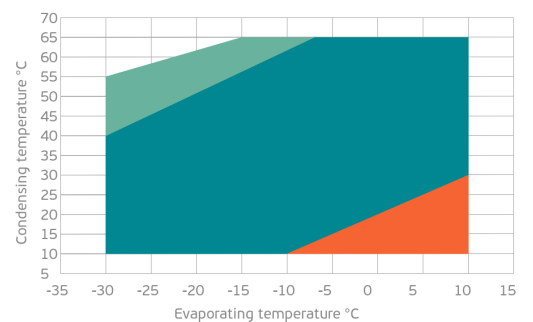
### EXTERNAL DIMENSIONS



### WIRING DIAGRAM



### OPERATING ENVELOPE



## MECHANICAL DATA

<b>Displacement:</b>	67.8 cm <sup>3</sup> /rev (11.8 m <sup>3</sup> /h)
<b>Maximum Recommended Refrigerant Charge:</b>	4.5 ml
<b>Weight:</b>	31 kg

At maximum evaporating temperature and maximum ambient temperature.

## ELECTRICAL DATA

<b>Motor Type:</b>	Induction motor -
<b>Pole:</b>	2 -
<b>Starting Torque:</b>	HST -
<b>Voltage Working Range 50Hz:</b>	342-462 V
<b>Voltage Working Range 60Hz:</b>	414-506 V
<b>Maximum Motor Temperature:</b>	130 °C
<b>Motor Insulation Class:</b>	B -
<b>Run Winding Resistance:</b>	2.45 Ω (± 10%) at 25°C
<b>Start Winding Resistance:</b>	- Ω (± 10%) at 25°C

At maximum evaporating temperature and maximum ambient temperature.

## ELECTRICAL COMPONENTS

	Component type	Description	Code
<b>Motor Protection:</b>	Internal Protector	-	-
<b>Starting Device:</b>	-	-	-
<b>Start Capacitor:</b>	-	-	-
<b>Run Capacitor:</b>	-	-	-
<b>CSR Box:</b>	-	-	-

## ACCESSORIES

	Includes
<b>Cover:</b>	yes
<b>Cover Gasket:</b>	yes
<b>Grounding Screw:</b>	yes
<b>Liquid Injection:</b>	-
<b>Temperature Sensor:</b>	-
<b>Grommets:</b>	yes
<b>Sleeves:</b>	yes
<b>Crankcase Heater:</b>	70
<b>Noise Insulation:</b>	-
<b>Rotolock Valves:</b>	-
<b>Rotolock Adapter:</b>	-
<b>Service Valves:</b>	-

For additional accessories please contact our technical support

## EXTERNAL CHARACTERISTICS

<b>Base Plate Max Dimensions:</b>	239x239mm
<b>Base Plate Holes Interaxis:</b>	191x191mm
<b>Height:</b>	419mm
<b>Compressor Shell Diameter:</b>	168mm
<b>Hanger Tab:</b>	yes
<b>Oil Side Glass:</b>	yes

	Shape	Material	Internal Diameter (mm)
<b>Suction Connector</b>	Brazing	Copper plated steel tube	ID 22.4 mm
<b>Discharge Connector</b>	Brazing	Copper plated steel tube	ID 12.92 mm

## RATED POINTS

	380V 50Hz	460V 60Hz	380V 50Hz	460V 60Hz
<b>Conditions</b>	EN12900: Te -10°C; Tc 45°C; Rg 20°C; No subcooling; Ta 35°C	EN12900: Te -10°C; Tc 45°C; Rg 20°C; No subcooling; Ta 35°C	ARI540(2004): Te -6.7°C; Tc 48.9°C; Rg 4.4°C; No subcooling; Ta 35°C	ARI540(2004): Te -6.7°C; Tc 48.9°C; Rg 4.4°C; No subcooling; Ta 35°C
<b>Capacity (W)</b>	6934	8321	6920	8304
<b>Power Input (W)</b>	3212	3854	3530	4236
<b>COP (W/W)</b>	2.16	2.16	1.96	1.96
<b>Rated Load Amps RLA (A)</b>	6.6	6.6	7	7
<b>Locked Rotor Amps LRA (A)</b>	60	60	60	60
<b>Maximum Operating Current MOC (A)</b>	10.3	10.3	10.3	10.3
<b>Sound Power Level (dBA)</b>	73	75	73	75

**PERFORMANCE CURVE DATA**

Standard: EN12900 / w

50 Hz

	Evaporating Temperature (°C)	Cooling Capacity (w)	Power Consumption (W)	Efficiency (w/W)
<b>35°C</b> Condensing Temperature	10°C	16529	3340	4.95
	5°C	13919	3187	4.37
	0°C	11710	3062	3.82
	-5°C	9843	2956	3.33
	-10°C	8258	2861	2.89
	-15°C	6897	2767	2.49
	-20°C	5700	2666	2.14
	-25°C	4607	2549	1.81
	-30°C	3560	2408	1.48
<b>45°C</b> Condensing Temperature	10°C	13850	3812	3.63
	5°C	11819	3670	3.22
	0°C	10083	3551	2.84
	-5°C	8583	3447	2.49
	-10°C	7261	3351	2.17
	-15°C	6057	3252	1.86
	-20°C	4912	3142	1.56
	-25°C	3766	3014	1.25
	-30°C	2561	2857	0.90

	Evaporating Temperature (°C)	Cooling Capacity (w)	Power Consumption (W)	Efficiency (w/W)
55°C Condensing Temperature	10°C	11075	4569	2.42
	5°C	9528	4449	2.14
	0°C	8170	4350	1.88
	-5°C	6944	4263	1.63
	-10°C	5790	4178	1.39
	-15°C	4649	4088	1.14
	-20°C	3461	3984	0.87
	-25°C	2167	3857	0.56