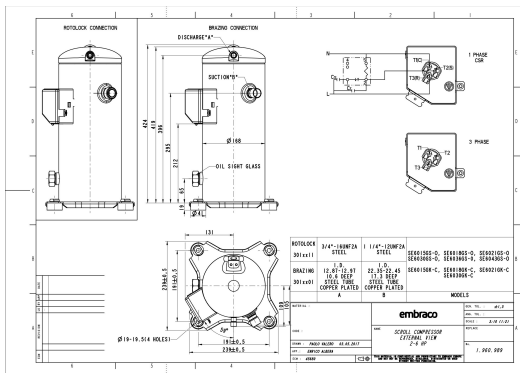


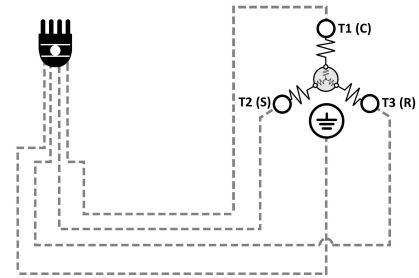
### GENERAL DATA

|                                       |                                |
|---------------------------------------|--------------------------------|
| <b>Type:</b>                          | Hermetic Scroll Compressor     |
| <b>Refrigerant:</b>                   | R404A                          |
| <b>Application:</b>                   | MBP                            |
| <b>Evaporating Temperature Range:</b> | -30°C to 10°C                  |
| <b>Voltage/Frequency:</b>             | 380-420 V 50 ~3<br>460 V 60 ~3 |
| <b>Compressor Cooling:</b>            | Static                         |
| <b>Technology Type:</b>               | Hermetic Scroll Compressor     |
| <b>Tube connections:</b>              | Brazing                        |
| <b>Packing Quantity:</b>              | 9                              |
| <b>Horse Power:</b>                   | 3                              |
| <b>Oil Type:</b>                      | POE 32                         |
| <b>Oil Initial Charge volume:</b>     | 1.4 l                          |
| <b>Oil Recharge volume:</b>           | 1.25 l                         |
| <b>Free Internal Volume:</b>          | 3.8 l - 1 l                    |
| <b>Refrigerant Charge:</b>            | 3.5 l                          |
| <b>Institute Approvals:</b>           | <b>CE</b>                      |

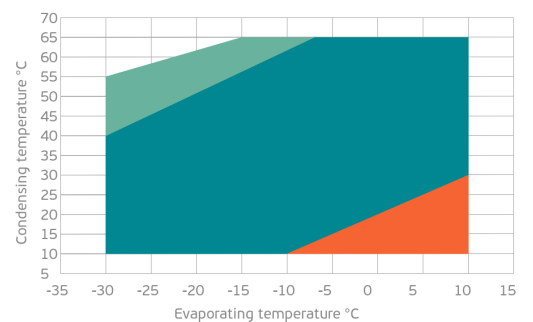
### EXTERNAL DIMENSIONS



### WIRING DIAGRAM



### OPERATING ENVELOPE



## MECHANICAL DATA

|  |  |
|--|--|
| <b>Displacement:</b>                           | 46.6 cm <sup>3</sup> /rev<br>(8.1 m <sup>3</sup> /h) |
| <b>Maximum Recommended Refrigerant Charge:</b> | 3.5 ml   |
| <b>Weight:</b>                                 | 30 kg  |

At maximum evaporating temperature and maximum ambient temperature.

## ELECTRICAL DATA

|                                    |                       |
|------------------------------------|-----------------------|
| <b>Motor Type:</b>                 | Induction motor -     |
| <b>Pole:</b>                       | 2 -                   |
| <b>Starting Torque:</b>            | HST -                 |
| <b>Voltage Working Range 50Hz:</b> | 342-462 V             |
| <b>Voltage Working Range 60Hz:</b> | 414-506 V             |
| <b>Maximum Motor Temperature:</b>  | 130 °C                |
| <b>Motor Insulation Class:</b>     | B -                   |
| <b>Run Winding Resistance:</b>     | 3.3 Ω (± 10%) at 25°C |
| <b>Start Winding Resistance:</b>   | - Ω (± 10%) at 25°C   |

At maximum evaporating temperature and maximum ambient temperature.

## ELECTRICAL COMPONENTS

|                          | Component type     | Description | Code |
|--------------------------|--------------------|-------------|------|
| <b>Motor Protection:</b> | Internal Protector | -           | -    |
| <b>Starting Device:</b>  | -                  | -           | -    |
| <b>Start Capacitor:</b>  | -                  | -           | -    |
| <b>Run Capacitor:</b>    | -                  | -           | -    |
| <b>CSR Box:</b>          | -                  | -           | -    |

## ACCESSORIES

|                            | Includes |
|----------------------------|----------|
| <b>Cover:</b>              | yes      |
| <b>Cover Gasket:</b>       | yes      |
| <b>Grounding Screw:</b>    | yes      |
| <b>Liquid Injection:</b>   | -        |
| <b>Temperature Sensor:</b> | -        |
| <b>Grommets:</b>           | yes      |
| <b>Sleeves:</b>            | yes      |
| <b>Crankcase Heater:</b>   | 70       |
| <b>Noise Insulation:</b>   | -        |
| <b>Rotolock Valves:</b>    | -        |
| <b>Rotolock Adapter:</b>   | -        |
| <b>Service Valves:</b>     | -        |

For additional accessories please contact our technical support

## EXTERNAL CHARACTERISTICS

|                                    |           |
|------------------------------------|-----------|
| <b>Base Plate Max Dimensions:</b>  | 239x239mm |
| <b>Base Plate Holes Interaxis:</b> | 191x191mm |
| <b>Height:</b>                     | 419mm     |
| <b>Compressor Shell Diameter:</b>  | 168mm     |
| <b>Hanger Tab:</b>                 | yes       |
| <b>Oil Side Glass:</b>             | yes       |

|                            | Shape   | Material                 | Internal Diameter (mm) |
|----------------------------|---------|--------------------------|------------------------|
| <b>Suction Connector</b>   | Brazing | Copper plated steel tube | ID 22.4 mm             |
| <b>Discharge Connector</b> | Brazing | Copper plated steel tube | ID 12.92 mm            |

**RATED POINTS**

|  | 380V 50Hz   | 460V 60Hz   | 380V 50Hz  | 460V 60Hz  |
|--|---|---|--|--|
| <b>Conditions</b>                        | EN12900: Te -10°C; Tc 45°C; Rg 20°C; No subcooling; Ta 35°C | EN12900: Te -10°C; Tc 45°C; Rg 20°C; No subcooling; Ta 35°C | ARI540(2004): Te -6.7°C; Tc 48.9°C; Rg 4.4°C; No subcooling; Ta 35°C | ARI540(2004): Te -6.7°C; Tc 48.9°C; Rg 4.4°C; No subcooling; Ta 35°C |
| <b>Capacity (W)</b>                      | 4850  | 5820  | 4840   | 5808   |
| <b>Power Input (W)</b>                   | 2318  | 2782  | 2547   | 3056   |
| <b>COP (W/W)</b>                         | 2.09  | 2.09  | 1.9  | 1.9  |
| <b>Rated Load Amps RLA (A)</b>           | 4.9   | 4.9   | 5.1  | 5.1  |
| <b>Locked Rotor Amps LRA (A)</b>         | 45  | 45  | 45   | 45   |
| <b>Maximum Operating Current MOC (A)</b> | 6.9   | 6.9   | 6.9  | 6.9  |
| <b>Sound Power Level (dBA)</b>           | 71  | 73  | 71   | 73   |

**PERFORMANCE CURVE DATA**

Standard: EN12900 / w

50 Hz

|                                       | Evaporating Temperature (°C) | Cooling Capacity (w) | Power Consumption (W) | Efficiency (w/W) |
|---------------------------------------|------------------------------|----------------------|-----------------------|------------------|
| <b>35°C</b><br>Condensing Temperature | 10°C                         | 10926                | 2420                  | 4.51             |
|                                       | 5°C                          | 9201                 | 2309                  | 3.98             |
|                                       | 0°C                          | 7740                 | 2219                  | 3.49             |
|                                       | -5°C                         | 6506                 | 2142                  | 3.04             |
|                                       | -10°C                        | 5459                 | 2073                  | 2.63             |
|                                       | -15°C                        | 4559                 | 2005                  | 2.27             |
|                                       | -20°C                        | 3767                 | 1932                  | 1.95             |
|                                       | -25°C                        | 3045                 | 1847                  | 1.65             |
|                                       | -30°C                        | 2353                 | 1745                  | 1.35             |
| <b>45°C</b><br>Condensing Temperature | 10°C                         | 9155                 | 2763                  | 3.31             |
|                                       | 5°C                          | 7812                 | 2659                  | 2.94             |
|                                       | 0°C                          | 6665                 | 2573                  | 2.59             |
|                                       | -5°C                         | 5673                 | 2498                  | 2.27             |
|                                       | -10°C                        | 4799                 | 2428                  | 1.98             |
|                                       | -15°C                        | 4003                 | 2356                  | 1.70             |
|                                       | -20°C                        | 3246                 | 2277                  | 1.43             |
|                                       | -25°C                        | 2489                 | 2184                  | 1.14             |
|                                       | -30°C                        | 1692                 | 2070                  | 0.82             |

|                                   | Evaporating<br>Temperature<br>(°C) | Cooling<br>Capacity<br>(w) | Power<br>Consumption<br>(W) | Efficiency<br>(w/W) |
|-----------------------------------|------------------------------------|----------------------------|-----------------------------|---------------------|
| 55°C<br>Condensing<br>Temperature | 10°C                               | 7320                       | 3311                        | 2.21                |
|                                   | 5°C                                | 6297                       | 3224                        | 1.95                |
|                                   | 0°C                                | 5400                       | 3153                        | 1.71                |
|                                   | -5°C                               | 4589                       | 3089                        | 1.49                |
|                                   | -10°C                              | 3826                       | 3028                        | 1.26                |
|                                   | -15°C                              | 3072                       | 2963                        | 1.04                |
|                                   | -20°C                              | 2287                       | 2887                        | 0.79                |
|                                   | -25°C                              | 1432                       | 2794                        | 0.51                |