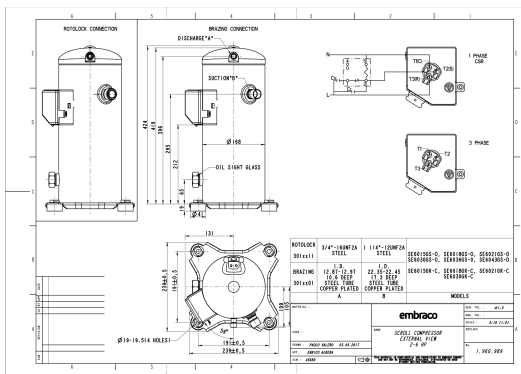


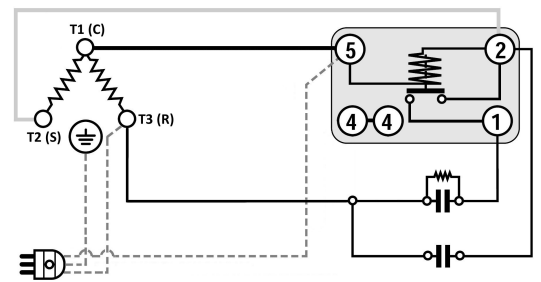
GENERAL DATA

Type:	Hermetic Scroll Compressor
Refrigerant:	R404A
Application:	MBP
Evaporating Temperature Range:	-30°C to 10°C
Voltage/Frequency:	220 V 50 ~1
Compressor Cooling:	Static
Technology Type:	Hermetic Scroll Compressor
Tube connections:	Rotolock
Packing Quantity:	9
Horse Power:	3
Oil Type:	POE 32
Oil Initial Charge volume:	1.4 l
Oil Recharge volume:	1.25 l
Free Internal Volume:	3.6 l - 1 l
Refrigerant Charge:	3.5 l
Institute Approvals:	CE

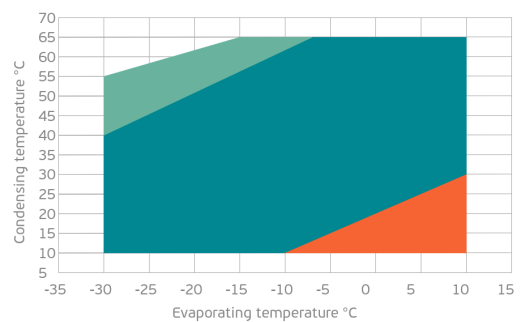
EXTERNAL DIMENSIONS



WIRING DIAGRAM



OPERATING ENVELOPE



MECHANICAL DATA

Displacement:	46.6 cm ³ /rev (8.1 m ³ /h)
Maximum Recommended Refrigerant Charge:	3.5 ml
Weight:	32 kg

At maximum evaporating temperature and maximum ambient temperature.

ELECTRICAL DATA

Motor Type:	Induction motor -
Pole:	2 -
Starting Torque:	HST -
Voltage Working Range 50Hz:	198-242 V
Voltage Working Range 60Hz:	- V
Maximum Motor Temperature:	130 °C
Motor Insulation Class:	B -
Run Winding Resistance:	0.7 Ω (± 10%) at 25°C
Start Winding Resistance:	1.4 Ω (± 10%) at 25°C

At maximum evaporating temperature and maximum ambient temperature.

ELECTRICAL COMPONENTS

	Component type	Description	Code
Starting Device:	Potential Relay	HLR3800-3E3D	-
Motor Protection:	Internal Protector	-	-
Start Capacitor:	Electrolytic type, standard duty, P1 fuse	160 uF (≥ 330V)	-
Run Capacitor:	Polypropylene type, Class B/450V, P2 fuse	60 uF (≥ 450V)	-
CSR Box:	yes	-	-

ACCESSORIES

	Includes
Cover:	yes
Cover Gasket:	yes
Grounding Screw:	yes
Liquid Injection:	-
Temperature Sensor:	-
Grommets:	yes
Sleeves:	yes
Crankase Heater:	70
Noise Insulation:	-
Rotolock Valves:	-
Rotolock Adapter:	-
Service Valves:	-

For additional accessories please contact our technical support

EXTERNAL CHARACTERISTICS

Base Plate Max Dimensions:	239x239mm
Base Plate Holes Interaxis:	191x191mm
Height:	419mm
Compressor Shell Diameter:	168mm
Hanger Tab:	yes
Oil Side Glass:	yes

	Shape	Material	Internal Diameter (mm)
Suction Connector	Rotolock	Copper plated steel tube	1 1/4"-12 UNF 2A
Discharge Connector	Rotolock	Copper plated steel tube	3/4"-16 UNF 2A



RATED POINTS

	220V 50Hz	220V 50Hz
Conditions	EN12900: Te -10°C; Tc 45°C; Rg 20°C; No subcooling; Ta 35°C	ARI540(2004): Te -6.7°C; Tc 48.9°C; Rg 4.4°C; No subcooling; Ta 35°C
Capacity (W)	4850	4840
Power Input (W)	2447	2689
COP (W/W)	1.98	1.8
Rated Load Amps RLA (A)	11.6	12.7
Locked Rotor Amps LRA (A)	76	76
Maximum Operating Current MOC (A)	19	19
Sound Power Level (dBA)	71	71

PERFORMANCE CURVE DATA

Standard: EN12900 / w

50 Hz

	Evaporating Temperature (°C)	Cooling Capacity (w)	Power Consumption (W)	Efficiency (w/W)
35°C Condensing Temperature	10°C	10926	2477	4.41
	5°C	9201	2364	3.89
	0°C	7740	2271	3.41
	-5°C	6506	2193	2.97
	-10°C	5459	2122	2.57
	-15°C	4559	2052	2.22
	-20°C	3767	1977	1.91
	-25°C	3045	1891	1.61
	-30°C	2353	1786	1.32
45°C Condensing Temperature	10°C	9155	2828	3.24
	5°C	7812	2722	2.87
	0°C	6665	2634	2.53
	-5°C	5673	2557	2.22
	-10°C	4799	2485	1.93
	-15°C	4003	2412	1.66
	-20°C	3246	2331	1.39
	-25°C	2489	2236	1.11
	-30°C	1692	2119	0.80

	Evaporating Temperature (°C)	Cooling Capacity (w)	Power Consumption (W)	Efficiency (w/W)
55°C Condensing Temperature	10°C	7320	3389	2.16
	5°C	6297	3300	1.91
	0°C	5400	3227	1.67
	-5°C	4589	3162	1.45
	-10°C	3826	3100	1.23
	-15°C	3072	3033	1.01
	-20°C	2287	2956	0.77
	-25°C	1432	2861	0.50