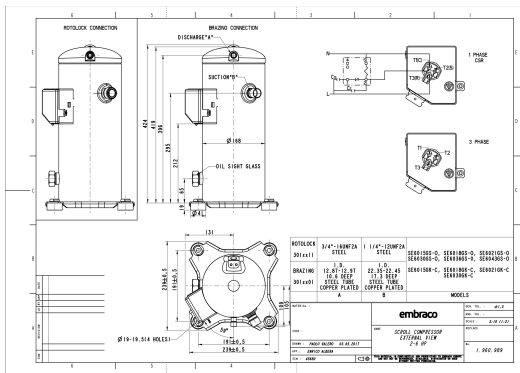


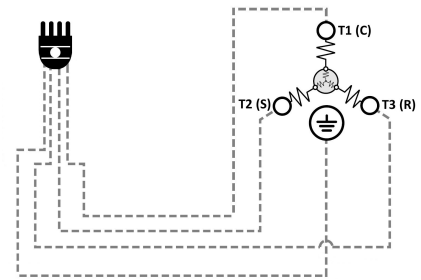
**GENERAL DATA**

<b>Type:</b>	Hermetic Scroll Compressor
<b>Refrigerant:</b>	R404A
<b>Application:</b>	MBP
<b>Evaporating Temperature Range:</b>	-30°C to 10°C
<b>Voltage/Frequency:</b>	380-420 V 50 ~3 460 V 60 ~3
<b>Compressor Cooling:</b>	Static
<b>Technology Type:</b>	Hermetic Scroll Compressor
<b>Tube connections:</b>	Rotolock
<b>Packing Quantity:</b>	9
<b>Horse Power:</b>	2.5
<b>Oil Type:</b>	POE 32
<b>Oil Initial Charge volume:</b>	1.4 l
<b>Oil Recharge volume:</b>	1.25 l
<b>Free Internal Volume:</b>	3.8 l - 1 l
<b>Refrigerant Charge:</b>	3.5 l
<b>Institute Approvals:</b>	<b>CE</b>

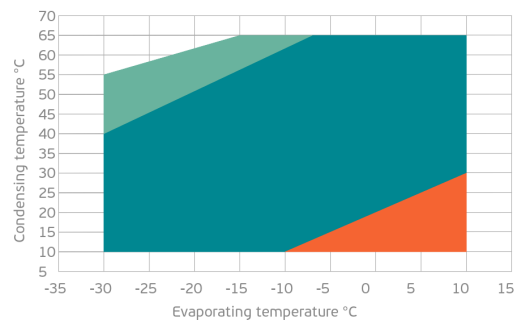
**EXTERNAL DIMENSIONS**



**WIRING DIAGRAM**



**OPERATING ENVELOPE**



## MECHANICAL DATA

<b>Displacement:</b>	42 cm <sup>3</sup> /rev (7.3 m <sup>3</sup> /h)
<b>Maximum Recommended Refrigerant Charge:</b>	3.5 ml
<b>Weight:</b>	30 kg

At maximum evaporating temperature and maximum ambient temperature.

## ELECTRICAL DATA

<b>Motor Type:</b>	Induction motor -
<b>Pole:</b>	2 -
<b>Starting Torque:</b>	HST -
<b>Voltage Working Range 50Hz:</b>	342-462 V
<b>Voltage Working Range 60Hz:</b>	414-506 V
<b>Maximum Motor Temperature:</b>	130 °C
<b>Motor Insulation Class:</b>	B -
<b>Run Winding Resistance:</b>	3.3 Ω (± 10%) at 25°C
<b>Start Winding Resistance:</b>	- Ω (± 10%) at 25°C

At maximum evaporating temperature and maximum ambient temperature.

## ELECTRICAL COMPONENTS

	Component type	Description	Code
<b>Motor Protection:</b>	Internal Protector	-	-
<b>Starting Device:</b>	-	-	-
<b>Start Capacitor:</b>	-	-	-
<b>Run Capacitor:</b>	-	-	-
<b>CSR Box:</b>	-	-	-

## ACCESSORIES

	Includes
<b>Cover:</b>	yes
<b>Cover Gasket:</b>	yes
<b>Grounding Screw:</b>	yes
<b>Liquid Injection:</b>	-
<b>Temperature Sensor:</b>	-
<b>Grommets:</b>	yes
<b>Sleeves:</b>	yes
<b>Crankcase Heater:</b>	70
<b>Noise Insulation:</b>	-
<b>Rotolock Valves:</b>	-
<b>Rotolock Adapter:</b>	-
<b>Service Valves:</b>	-

For additional accessories please contact our technical support

## EXTERNAL CHARACTERISTICS

<b>Base Plate Max Dimensions:</b>	239x239mm
<b>Base Plate Holes Interaxis:</b>	191x191mm
<b>Height:</b>	419mm
<b>Compressor Shell Diameter:</b>	168mm
<b>Hanger Tab:</b>	yes
<b>Oil Side Glass:</b>	yes

	Shape	Material	Internal Diameter (mm)
<b>Suction Connector</b>	Rotolock	Copper plated steel tube	1 1/4"-12 UNF 2A
<b>Discharge Connector</b>	Rotolock	Copper plated steel tube	3/4"-16 UNF 2A

**RATED POINTS**

Conditions	380V 50Hz	460V 60Hz	380V 50Hz	460V 60Hz
	EN12900: Te -10°C; Tc 45°C; Rg 20°C; No subcooling; Ta 35°C	EN12900: Te -10°C; Tc 45°C; Rg 20°C; No subcooling; Ta 35°C	ARI540(2004): Te -6.7°C; Tc 48.9°C; Rg 4.4°C; No subcooling; Ta 35°C	ARI540(2004): Te -6.7°C; Tc 48.9°C; Rg 4.4°C; No subcooling; Ta 35°C
Capacity (W)	4259	5111	4250	5100
Power Input (W)	2091	2509	2297	2757
COP (W/W)	2.04	2.04	1.85	1.85
Rated Load Amps RLA (A)	4.7	4.7	4.8	4.8
Locked Rotor Amps LRA (A)	45	45	45	45
Maximum Operating Current MOC (A)	6.4	6.4	6.4	6.4
Sound Power Level (dBA)	71	73	71	73

**PERFORMANCE CURVE DATA**

Standard: EN12900 / w

50 Hz

	Evaporating Temperature (°C)	Cooling Capacity (w)	Power Consumption (W)	Efficiency (w/W)
<b>35°C</b> Condensing Temperature	10°C	9302	2080	4.47
	5°C	7833	1985	3.95
	0°C	6590	1907	3.46
	-5°C	5539	1841	3.01
	-10°C	4648	1782	2.61
	-15°C	3881	1723	2.25
	-20°C	3208	1660	1.93
	-25°C	2593	1588	1.63
	-30°C	2004	1500	1.34
<b>45°C</b> Condensing Temperature	10°C	7795	2374	3.28
	5°C	6651	2285	2.91
	0°C	5674	2211	2.57
	-5°C	4831	2147	2.25
	-10°C	4086	2087	1.96
	-15°C	3409	2025	1.68
	-20°C	2764	1957	1.41
	-25°C	2119	1877	1.13
	-30°C	1441	1780	0.81

	Evaporating Temperature (°C)	Cooling Capacity (w)	Power Consumption (W)	Efficiency (w/W)
55°C Condensing Temperature	10°C	6233	2845	2.19
	5°C	5362	2771	1.94
	0°C	4598	2709	1.70
	-5°C	3908	2655	1.47
	-10°C	3258	2602	1.25
	-15°C	2616	2546	1.03
	-20°C	1948	2481	0.79
	-25°C	1220	2402	0.51