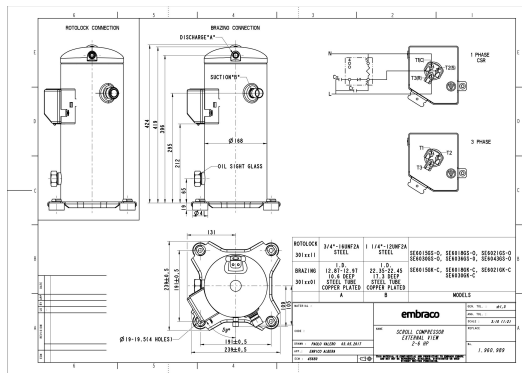


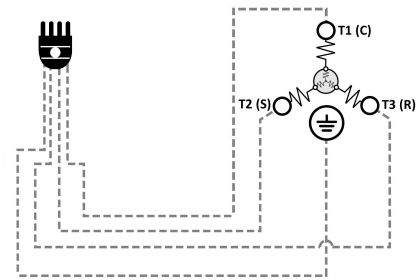
### GENERAL DATA

<b>Type:</b>	Hermetic Scroll Compressor
<b>Refrigerant:</b>	R404A
<b>Application:</b>	MBP
<b>Evaporating Temperature Range:</b>	-30°C to 10°C
<b>Voltage/Frequency:</b>	380-420 V 50 ~3 460 V 60 ~3
<b>Compressor Cooling:</b>	Static
<b>Technology Type:</b>	Hermetic Scroll Compressor
<b>Tube connections:</b>	Brazing
<b>Packing Quantity:</b>	9
<b>Horse Power:</b>	2.5
<b>Oil Type:</b>	POE 32
<b>Oil Initial Charge volume:</b>	1.4 l
<b>Oil Recharge volume:</b>	1.25 l
<b>Free Internal Volume:</b>	3.8 l - 1 l
<b>Refrigerant Charge:</b>	3.5 l
<b>Institute Approvals:</b>	<b>CE</b>

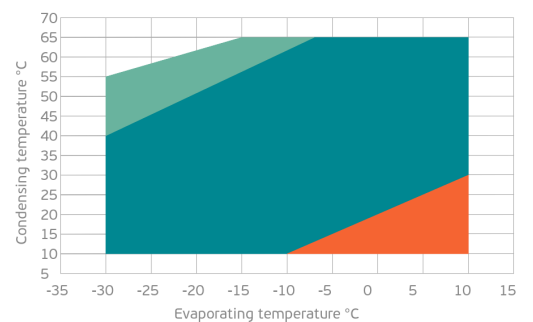
### EXTERNAL DIMENSIONS



### WIRING DIAGRAM



### OPERATING ENVELOPE



## MECHANICAL DATA

<b>Displacement:</b>	42 cm <sup>3</sup> /rev (7.3 m <sup>3</sup> /h)
<b>Maximum Recommended Refrigerant Charge:</b>	3.5 ml
<b>Weight:</b>	30 kg

At maximum evaporating temperature and maximum ambient temperature.

## ELECTRICAL DATA

<b>Motor Type:</b>	Induction motor -
<b>Pole:</b>	2 -
<b>Starting Torque:</b>	HST -
<b>Voltage Working Range 50Hz:</b>	342-462 V
<b>Voltage Working Range 60Hz:</b>	414-506 V
<b>Maximum Motor Temperature:</b>	130 °C
<b>Motor Insulation Class:</b>	B -
<b>Run Winding Resistance:</b>	3.3 Ω (± 10%) at 25°C
<b>Start Winding Resistance:</b>	- Ω (± 10%) at 25°C

At maximum evaporating temperature and maximum ambient temperature.

## ELECTRICAL COMPONENTS

	Component type	Description	Code
<b>Motor Protection:</b>	Internal Protector	-	-
<b>Starting Device:</b>	-	-	-
<b>Start Capacitor:</b>	-	-	-
<b>Run Capacitor:</b>	-	-	-
<b>CSR Box:</b>	-	-	-

## ACCESSORIES

	Includes
<b>Cover:</b>	yes
<b>Cover Gasket:</b>	yes
<b>Grounding Screw:</b>	yes
<b>Liquid Injection:</b>	-
<b>Temperature Sensor:</b>	-
<b>Grommets:</b>	yes
<b>Sleeves:</b>	yes
<b>Crankcase Heater:</b>	70
<b>Noise Insulation:</b>	-
<b>Rotolock Valves:</b>	-
<b>Rotolock Adapter:</b>	-
<b>Service Valves:</b>	-

For additional accessories please contact our technical support

## EXTERNAL CHARACTERISTICS

<b>Base Plate Max Dimensions:</b>	239x239mm
<b>Base Plate Holes Interaxis:</b>	191x191mm
<b>Height:</b>	419mm
<b>Compressor Shell Diameter:</b>	168mm
<b>Hanger Tab:</b>	yes
<b>Oil Side Glass:</b>	yes

	Shape	Material	Internal Diameter (mm)
<b>Suction Connector</b>	Brazing	Copper plated steel tube	ID 22.4 mm
<b>Discharge Connector</b>	Brazing	Copper plated steel tube	ID 12.92 mm

## RATED POINTS

	380V 50Hz	460V 60Hz	380V 50Hz	460V 60Hz
<b>Conditions</b>	EN12900: Te -10°C; Tc 45°C; Rg 20°C; No subcooling; Ta 35°C	EN12900: Te -10°C; Tc 45°C; Rg 20°C; No subcooling; Ta 35°C	ARI540(2004): Te -6.7°C; Tc 48.9°C; Rg 4.4°C; No subcooling; Ta 35°C	ARI540(2004): Te -6.7°C; Tc 48.9°C; Rg 4.4°C; No subcooling; Ta 35°C
<b>Capacity (W)</b>	4259	5111	4250	5100
<b>Power Input (W)</b>	2091	2509	2297	2757
<b>COP (W/W)</b>	2.04	2.04	1.85	1.85
<b>Rated Load Amps RLA (A)</b>	4.7	4.7	4.8	4.8
<b>Locked Rotor Amps LRA (A)</b>	45	45	45	45
<b>Maximum Operating Current MOC (A)</b>	6.4	6.4	6.4	6.4
<b>Sound Power Level (dBA)</b>	71	73	71	73

**PERFORMANCE CURVE DATA**

Standard: EN12900 / w

50 Hz

	Evaporating Temperature (°C)	Cooling Capacity (w)	Power Consumption (W)	Efficiency (w/W)
<b>35°C</b> Condensing Temperature	10°C	9302	2080	4.47
	5°C	7833	1985	3.95
	0°C	6590	1907	3.46
	-5°C	5539	1841	3.01
	-10°C	4648	1782	2.61
	-15°C	3881	1723	2.25
	-20°C	3208	1660	1.93
	-25°C	2593	1588	1.63
	-30°C	2004	1500	1.34
<b>45°C</b> Condensing Temperature	10°C	7795	2374	3.28
	5°C	6651	2285	2.91
	0°C	5674	2211	2.57
	-5°C	4831	2147	2.25
	-10°C	4086	2087	1.96
	-15°C	3409	2025	1.68
	-20°C	2764	1957	1.41
	-25°C	2119	1877	1.13
	-30°C	1441	1780	0.81

	Evaporating Temperature (°C)	Cooling Capacity (w)	Power Consumption (W)	Efficiency (w/W)
55°C Condensing Temperature	10°C	6233	2845	2.19
	5°C	5362	2771	1.94
	0°C	4598	2709	1.70
	-5°C	3908	2655	1.47
	-10°C	3258	2602	1.25
	-15°C	2616	2546	1.03
	-20°C	1948	2481	0.79
	-25°C	1220	2402	0.51