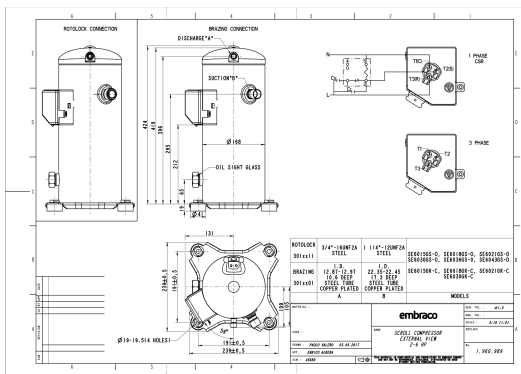


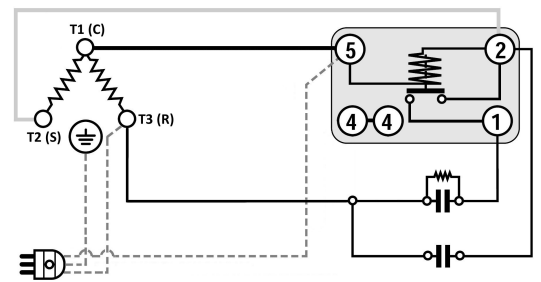
### GENERAL DATA

<b>Type:</b>	Hermetic Scroll Compressor
<b>Refrigerant:</b>	R404A
<b>Application:</b>	MBP
<b>Evaporating Temperature Range:</b>	-30°C to 10°C
<b>Voltage/Frequency:</b>	220 V 50 ~1
<b>Compressor Cooling:</b>	Static
<b>Technology Type:</b>	Hermetic Scroll Compressor
<b>Tube connections:</b>	Rotolock
<b>Packing Quantity:</b>	9
<b>Horse Power:</b>	2.5
<b>Oil Type:</b>	POE 32
<b>Oil Initial Charge volume:</b>	1.4 l
<b>Oil Recharge volume:</b>	1.25 l
<b>Free Internal Volume:</b>	3.6 l - 1 l
<b>Refrigerant Charge:</b>	3.5 l
<b>Institute Approvals:</b>	<b>CE</b>

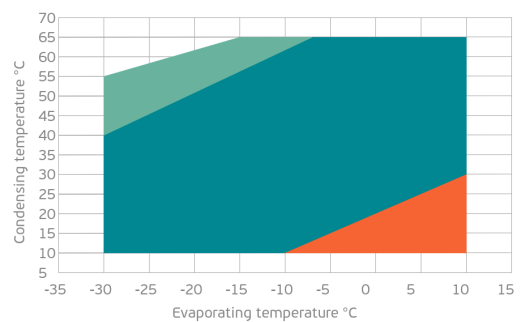
### EXTERNAL DIMENSIONS



### WIRING DIAGRAM



### OPERATING ENVELOPE



## MECHANICAL DATA

<b>Displacement:</b>	42 cm <sup>3</sup> /rev (7.3 m <sup>3</sup> /h)
<b>Maximum Recommended Refrigerant Charge:</b>	3.5 ml
<b>Weight:</b>	32 kg

At maximum evaporating temperature and maximum ambient temperature.

## ELECTRICAL DATA

<b>Motor Type:</b>	Induction motor -
<b>Pole:</b>	2 -
<b>Starting Torque:</b>	HST -
<b>Voltage Working Range 50Hz:</b>	198-242 V
<b>Voltage Working Range 60Hz:</b>	- V
<b>Maximum Motor Temperature:</b>	130 °C
<b>Motor Insulation Class:</b>	B -
<b>Run Winding Resistance:</b>	0.7 Ω (± 10%) at 25°C
<b>Start Winding Resistance:</b>	1.4 Ω (± 10%) at 25°C

At maximum evaporating temperature and maximum ambient temperature.

## ELECTRICAL COMPONENTS

	Component type	Description	Code
<b>Starting Device:</b>	Potential Relay	HLR3800-3E3D	-
<b>Motor Protection:</b>	Internal Protector	-	-
<b>Start Capacitor:</b>	Electrolytic type, standard duty, P1 fuse	160 uF (≥ 330V)	-
<b>Run Capacitor:</b>	Polypropylene type, Class B/450V, P2 fuse	60 uF (≥ 450V)	-
<b>CSR Box:</b>	yes	-	-

## ACCESSORIES

	Includes
<b>Cover:</b>	yes
<b>Cover Gasket:</b>	yes
<b>Grounding Screw:</b>	yes
<b>Liquid Injection:</b>	-
<b>Temperature Sensor:</b>	-
<b>Grommets:</b>	yes
<b>Sleeves:</b>	yes
<b>Crankase Heater:</b>	70
<b>Noise Insulation:</b>	-
<b>Rotolock Valves:</b>	-
<b>Rotolock Adapter:</b>	-
<b>Service Valves:</b>	-

For additional accessories please contact our technical support

## EXTERNAL CHARACTERISTICS

<b>Base Plate Max Dimensions:</b>	239x239mm
<b>Base Plate Holes Interaxis:</b>	191x191mm
<b>Height:</b>	419mm
<b>Compressor Shell Diameter:</b>	168mm
<b>Hanger Tab:</b>	yes
<b>Oil Side Glass:</b>	yes

	Shape	Material	Internal Diameter (mm)
<b>Suction Connector</b>	Rotolock	Copper plated steel tube	1 1/4"-12 UNF 2A
<b>Discharge Connector</b>	Rotolock	Copper plated steel tube	3/4"-16 UNF 2A



**RATED POINTS**

	220V 50Hz	220V 50Hz
Conditions	EN12900: Te -10°C; Tc 45°C; Rg 20°C; No subcooling; Ta 35°C	ARI540(2004): Te -6.7°C; Tc 48.9°C; Rg 4.4°C; No subcooling; Ta 35°C
Capacity (W)	4259	4250
Power Input (W)	2149	2361
COP (W/W)	1.94	1.76
Rated Load Amps RLA (A)	10.2	11.2
Locked Rotor Amps LRA (A)	76	76
Maximum Operating Current MOC (A)	17.2	17.2
Sound Power Level (dBA)	71	71

**PERFORMANCE CURVE DATA**

Standard: EN12900 / w

50 Hz

	Evaporating Temperature (°C)	Cooling Capacity (w)	Power Consumption (W)	Efficiency (w/W)
<b>35°C</b> Condensing Temperature	10°C	9302	2122	4.38
	5°C	7833	2025	3.87
	0°C	6590	1946	3.39
	-5°C	5539	1879	2.95
	-10°C	4648	1818	2.56
	-15°C	3881	1758	2.21
	-20°C	3208	1694	1.89
	-25°C	2593	1620	1.60
	-30°C	2004	1531	1.31
<b>45°C</b> Condensing Temperature	10°C	7795	2423	3.22
	5°C	6651	2332	2.85
	0°C	5674	2256	2.52
	-5°C	4831	2191	2.20
	-10°C	4086	2129	1.92
	-15°C	3409	2066	1.65
	-20°C	2764	1997	1.38
	-25°C	2119	1915	1.11
	-30°C	1441	1816	0.79

	Evaporating Temperature (°C)	Cooling Capacity (w)	Power Consumption (W)	Efficiency (w/W)
55°C Condensing Temperature	10°C	6233	2903	2.15
	5°C	5362	2827	1.90
	0°C	4598	2764	1.66
	-5°C	3908	2709	1.44
	-10°C	3258	2655	1.23
	-15°C	2616	2598	1.01
	-20°C	1948	2532	0.77
	-25°C	1220	2451	0.50