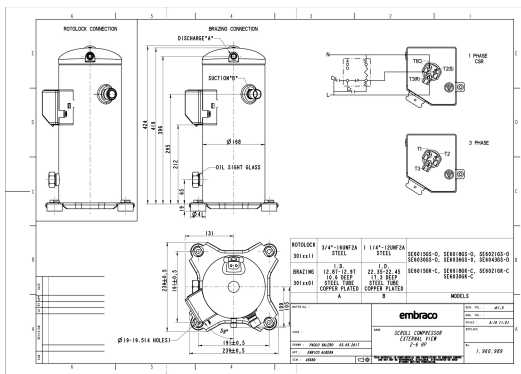


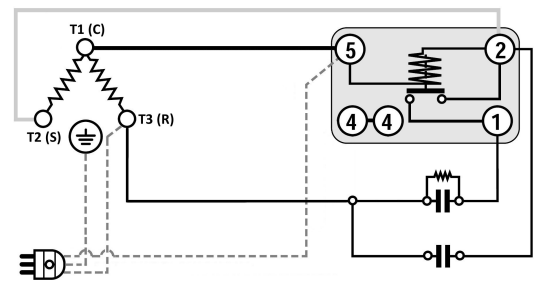
GENERAL DATA

Type:	Hermetic Scroll Compressor
Refrigerant:	R404A
Application:	MBP
Evaporating Temperature Range:	-30°C to 10°C
Voltage/Frequency:	220 V 50 ~1
Compressor Cooling:	Static
Technology Type:	Hermetic Scroll Compressor
Tube connections:	Brazing
Packing Quantity:	9
Horse Power:	2.5
Oil Type:	POE 32
Oil Initial Charge volume:	1.4 l
Oil Recharge volume:	1.25 l
Free Internal Volume:	3.6 l - 1 l
Refrigerant Charge:	3.5 l
Institute Approvals:	CE

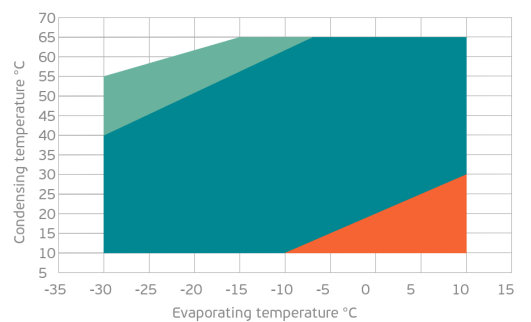
EXTERNAL DIMENSIONS



WIRING DIAGRAM



OPERATING ENVELOPE



MECHANICAL DATA

Displacement:	42 cm ³ /rev (7.3 m ³ /h)
Maximum Recommended Refrigerant Charge:	3.5 ml
Weight:	32 kg

At maximum evaporating temperature and maximum ambient temperature.

ELECTRICAL DATA

Motor Type:	Induction motor -
Pole:	2 -
Starting Torque:	HST -
Voltage Working Range 50Hz:	198-242 V
Voltage Working Range 60Hz:	- V
Maximum Motor Temperature:	130 °C
Motor Insulation Class:	B -
Run Winding Resistance:	0.7 Ω (± 10%) at 25°C
Start Winding Resistance:	1.4 Ω (± 10%) at 25°C

At maximum evaporating temperature and maximum ambient temperature.

ELECTRICAL COMPONENTS

	Component type	Description	Code
Starting Device:	Potential Relay	HLR3800-3E3D	-
Motor Protection:	Internal Protector	-	-
Start Capacitor:	Electrolytic type, standard duty, P1 fuse	160 uF (≥ 330V)	-
Run Capacitor:	Polypropylene type, Class B/450V, P2 fuse	60 uF (≥ 450V)	-
CSR Box:	yes	-	-

ACCESSORIES

	Includes
Cover:	yes
Cover Gasket:	yes
Grounding Screw:	yes
Liquid Injection:	-
Temperature Sensor:	-
Grommets:	yes
Sleeves:	yes
Crankase Heater:	70
Noise Insulation:	-
Rotolock Valves:	-
Rotolock Adapter:	-
Service Valves:	-

For additional accessories please contact our technical support

EXTERNAL CHARACTERISTICS

Base Plate Max Dimensions:	239x239mm
Base Plate Holes Interaxis:	191x191mm
Height:	419mm
Compressor Shell Diameter:	168mm
Hanger Tab:	yes
Oil Side Glass:	yes

	Shape	Material	Internal Diameter (mm)
Suction Connector	Brazing	Copper plated steel tube	ID 22.4 mm
Discharge Connector	Brazing	Copper plated steel tube	ID 12.92 mm

RATED POINTS

	220V 50Hz	220V 50Hz
Conditions	EN12900: Te -10°C; Tc 45°C; Rg 20°C; No subcooling; Ta 35°C	ARI540(2004): Te -6.7°C; Tc 48.9°C; Rg 4.4°C; No subcooling; Ta 35°C
Capacity (W)	4259	4250
Power Input (W)	2149	2361
COP (W/W)	1.94	1.76
Rated Load Amps RLA (A)	10.2	11.2
Locked Rotor Amps LRA (A)	76	76
Maximum Operating Current MOC (A)	17.2	17.2
Sound Power Level (dBA)	71	71

PERFORMANCE CURVE DATA

Standard: EN12900 / w

50 Hz

	Evaporating Temperature (°C)	Cooling Capacity (w)	Power Consumption (W)	Efficiency (w/W)
35°C Condensing Temperature	10°C	9302	2122	4.38
	5°C	7833	2025	3.87
	0°C	6590	1946	3.39
	-5°C	5539	1879	2.95
	-10°C	4648	1818	2.56
	-15°C	3881	1758	2.21
	-20°C	3208	1694	1.89
	-25°C	2593	1620	1.60
	-30°C	2004	1531	1.31
45°C Condensing Temperature	10°C	7795	2423	3.22
	5°C	6651	2332	2.85
	0°C	5674	2256	2.52
	-5°C	4831	2191	2.20
	-10°C	4086	2129	1.92
	-15°C	3409	2066	1.65
	-20°C	2764	1997	1.38
	-25°C	2119	1915	1.11
	-30°C	1441	1816	0.79

	Evaporating Temperature (°C)	Cooling Capacity (w)	Power Consumption (W)	Efficiency (w/W)
55°C Condensing Temperature	10°C	6233	2903	2.15
	5°C	5362	2827	1.90
	0°C	4598	2764	1.66
	-5°C	3908	2709	1.44
	-10°C	3258	2655	1.23
	-15°C	2616	2598	1.01
	-20°C	1948	2532	0.77
	-25°C	1220	2451	0.50