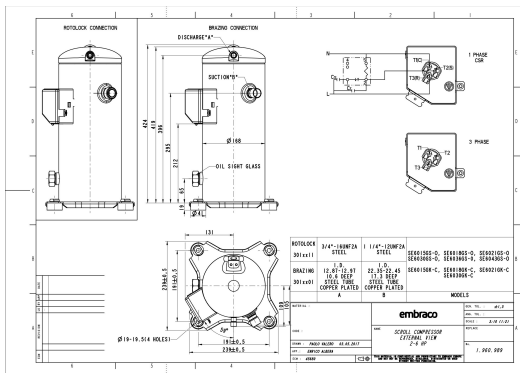


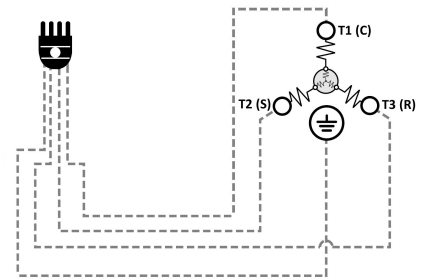
### GENERAL DATA

<b>Type:</b>	Hermetic Scroll Compressor
<b>Refrigerant:</b>	R404A
<b>Application:</b>	MBP
<b>Evaporating Temperature Range:</b>	-30°C to 10°C
<b>Voltage/Frequency:</b>	380-420 V 50 ~3 460 V 60 ~3
<b>Compressor Cooling:</b>	Static
<b>Technology Type:</b>	Hermetic Scroll Compressor
<b>Tube connections:</b>	Rotolock
<b>Packing Quantity:</b>	9
<b>Horse Power:</b>	2
<b>Oil Type:</b>	POE 32
<b>Oil Initial Charge volume:</b>	1.4 l
<b>Oil Recharge volume:</b>	1.25 l
<b>Free Internal Volume:</b>	4.1 l - 1 l
<b>Refrigerant Charge:</b>	2.8 l
<b>Institute Approvals:</b>	<b>CE</b>

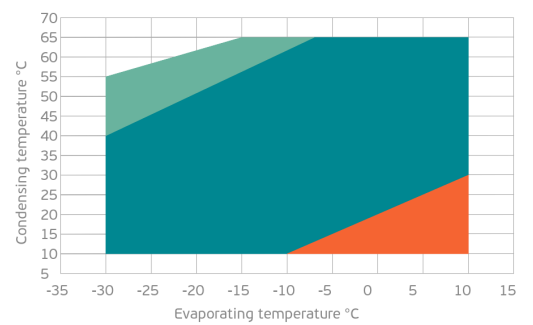
### EXTERNAL DIMENSIONS



### WIRING DIAGRAM



### OPERATING ENVELOPE



## MECHANICAL DATA

<b>Displacement:</b>	33.3 cm <sup>3</sup> /rev (5.8 m <sup>3</sup> /h)
<b>Maximum Recommended Refrigerant Charge:</b>	2.8 ml
<b>Weight:</b>	29 kg

At maximum evaporating temperature and maximum ambient temperature.

## ELECTRICAL DATA

<b>Motor Type:</b>	Induction motor -
<b>Pole:</b>	2 -
<b>Starting Torque:</b>	HST -
<b>Voltage Working Range 50Hz:</b>	342-462 V
<b>Voltage Working Range 60Hz:</b>	414-506 V
<b>Maximum Motor Temperature:</b>	130 °C
<b>Motor Insulation Class:</b>	B -
<b>Run Winding Resistance:</b>	6.7 Ω (± 10%) at 25°C
<b>Start Winding Resistance:</b>	- Ω (± 10%) at 25°C

At maximum evaporating temperature and maximum ambient temperature.

## ELECTRICAL COMPONENTS

	Component type	Description	Code
<b>Motor Protection:</b>	Internal Protector	-	-
<b>Starting Device:</b>	-	-	-
<b>Start Capacitor:</b>	-	-	-
<b>Run Capacitor:</b>	-	-	-
<b>CSR Box:</b>	-	-	-

## ACCESSORIES

	Includes
<b>Cover:</b>	yes
<b>Cover Gasket:</b>	yes
<b>Grounding Screw:</b>	yes
<b>Liquid Injection:</b>	-
<b>Temperature Sensor:</b>	-
<b>Grommets:</b>	yes
<b>Sleeves:</b>	yes
<b>Crankase Heater:</b>	70
<b>Noise Insulation:</b>	-
<b>Rotolock Valves:</b>	-
<b>Rotolock Adapter:</b>	-
<b>Service Valves:</b>	-

For additional accessories please contact our technical support

## EXTERNAL CHARACTERISTICS

<b>Base Plate Max Dimensions:</b>	239x239mm
<b>Base Plate Holes Interaxis:</b>	191x191mm
<b>Height:</b>	419mm
<b>Compressor Shell Diameter:</b>	168mm
<b>Hanger Tab:</b>	yes
<b>Oil Side Glass:</b>	yes

	Shape	Material	Internal Diameter (mm)
<b>Suction Connector</b>	Rotolock	Copper plated steel tube	1 1/4"-12 UNF 2A
<b>Discharge Connector</b>	Rotolock	Copper plated steel tube	3/4"-16 UNF 2A

**RATED POINTS**

	<b>380V 50Hz</b>	<b>460V 60Hz</b>	<b>380V 50Hz</b>	<b>460V 60Hz</b>
<b>Conditions</b>	EN12900: Te -10°C; Tc 45°C; Rg 20°C; No subcooling; Ta 35°C	EN12900: Te -10°C; Tc 45°C; Rg 20°C; No subcooling; Ta 35°C	ARI540(2004): Te -6.7°C; Tc 48.9°C; Rg 4.4°C; No subcooling; Ta 35°C	ARI540(2004): Te -6.7°C; Tc 48.9°C; Rg 4.4°C; No subcooling; Ta 35°C
<b>Capacity (W)</b>	3567	4280	3560	4272
<b>Power Input (W)</b>	1851	2221	2034	2441
<b>COP (W/W)</b>	1.93	1.93	1.75	1.75
<b>Rated Load Amps RLA (A)</b>	3.2	3.2	3.5	3.5
<b>Locked Rotor Amps LRA (A)</b>	22	22	22	22
<b>Maximum Operating Current MOC (A)</b>	5.2	5.2	5.2	5.2
<b>Sound Power Level (dBA)</b>	71	73	71	73

**PERFORMANCE CURVE DATA**

Standard: EN12900 / w

50 Hz

	Evaporating Temperature (°C)	Cooling Capacity (w)	Power Consumption (W)	Efficiency (w/W)
<b>35°C</b> Condensing Temperature	10°C	7284	1642	4.44
	5°C	6134	1567	3.91
	0°C	5161	1505	3.43
	-5°C	4338	1453	2.99
	-10°C	3639	1406	2.59
	-15°C	3040	1360	2.24
	-20°C	2512	1311	1.92
	-25°C	2031	1253	1.62
	-30°C	1569	1184	1.33
<b>45°C</b> Condensing Temperature	10°C	6104	1874	3.26
	5°C	5209	1804	2.89
	0°C	4444	1745	2.55
	-5°C	3783	1695	2.23
	-10°C	3200	1647	1.94
	-15°C	2670	1599	1.67
	-20°C	2165	1545	1.40
	-25°C	1660	1482	1.12
	-30°C	1129	1405	0.80

	Evaporating Temperature (°C)	Cooling Capacity (w)	Power Consumption (W)	Efficiency (w/W)
55°C Condensing Temperature	10°C	4881	2246	2.17
	5°C	4199	2187	1.92
	0°C	3601	2138	1.68
	-5°C	3061	2095	1.46
	-10°C	2552	2054	1.24
	-15°C	2049	2010	1.02
	-20°C	1526	1958	0.78
	-25°C	956	1896	0.50