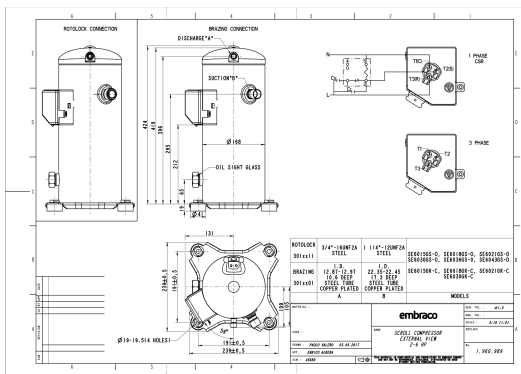


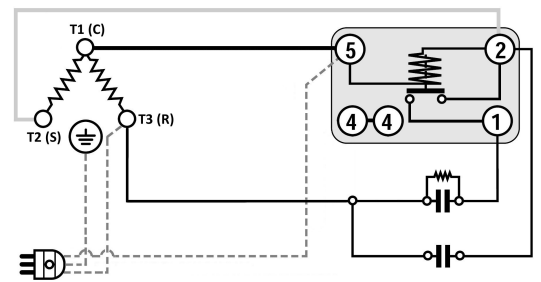
GENERAL DATA

Type:	Hermetic Scroll Compressor
Refrigerant:	R404A
Application:	MBP
Evaporating Temperature Range:	-30°C to 10°C
Voltage/Frequency:	220 V 50 ~1
Compressor Cooling:	Static
Technology Type:	Hermetic Scroll Compressor
Tube connections:	Rotolock
Packing Quantity:	9
Horse Power:	2
Oil Type:	POE 32
Oil Initial Charge volume:	1.4 l
Oil Recharge volume:	1.25 l
Free Internal Volume:	3.6 l - 1 l
Refrigerant Charge:	2.8 l
Institute Approvals:	CE

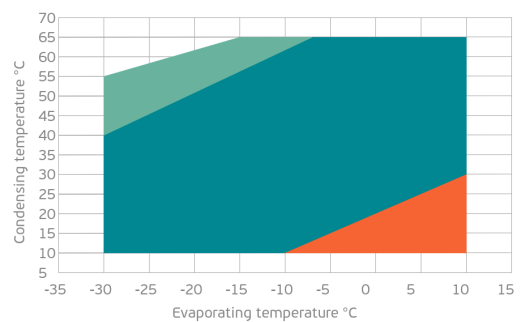
EXTERNAL DIMENSIONS



WIRING DIAGRAM



OPERATING ENVELOPE



MECHANICAL DATA

Displacement:	33.3 cm ³ /rev (5.8 m ³ /h)
Maximum Recommended Refrigerant Charge:	2.8 ml
Weight:	32 kg

At maximum evaporating temperature and maximum ambient temperature.

ELECTRICAL DATA

Motor Type:	Induction motor -
Pole:	2 -
Starting Torque:	HST -
Voltage Working Range 50Hz:	198-242 V
Voltage Working Range 60Hz:	- V
Maximum Motor Temperature:	130 °C
Motor Insulation Class:	B -
Run Winding Resistance:	0.7 Ω (± 10%) at 25°C
Start Winding Resistance:	1.4 Ω (± 10%) at 25°C

At maximum evaporating temperature and maximum ambient temperature.

ELECTRICAL COMPONENTS

	Component type	Description	Code
Starting Device:	Potential Relay	HLR3800-3E3D	-
Motor Protection:	Internal Protector	-	-
Start Capacitor:	Electrolytic type, standard duty, P1 fuse	160 uF (≥ 330V)	-
Run Capacitor:	Polypropylene type, Class B/450V, P2 fuse	60 uF (≥ 450V)	-
CSR Box:	yes	-	-

ACCESSORIES

	Includes
Cover:	yes
Cover Gasket:	yes
Grounding Screw:	yes
Liquid Injection:	-
Temperature Sensor:	-
Grommets:	yes
Sleeves:	yes
Crankase Heater:	70
Noise Insulation:	-
Rotolock Valves:	-
Rotolock Adapter:	-
Service Valves:	-

For additional accessories please contact our technical support

EXTERNAL CHARACTERISTICS

Base Plate Max Dimensions:	239x239mm
Base Plate Holes Interaxis:	191x191mm
Height:	419mm
Compressor Shell Diameter:	168mm
Hanger Tab:	yes
Oil Side Glass:	yes

	Shape	Material	Internal Diameter (mm)
Suction Connector	Rotolock	Copper plated steel tube	1 1/4"-12 UNF 2A
Discharge Connector	Rotolock	Copper plated steel tube	3/4"-16 UNF 2A



RATED POINTS

	220V 50Hz	220V 50Hz
Conditions	EN12900: Te -10°C; Tc 45°C; Rg 20°C; No subcooling; Ta 35°C	ARI540(2004): Te -6.7°C; Tc 48.9°C; Rg 4.4°C; No subcooling; Ta 35°C
Capacity (W)	3567	3560
Power Input (W)	1800	1978
COP (W/W)	1.89	1.72
Rated Load Amps RLA (A)	8.5	9.4
Locked Rotor Amps LRA (A)	76	76
Maximum Operating Current MOC (A)	16.2	16.2
Sound Power Level (dBA)	71	71

PERFORMANCE CURVE DATA

Standard: EN12900 / w

50 Hz

	Evaporating Temperature (°C)	Cooling Capacity (w)	Power Consumption (W)	Efficiency (w/W)
35°C Condensing Temperature	10°C	7284	1655	4.40
	5°C	6134	1580	3.88
	0°C	5161	1518	3.40
	-5°C	4338	1465	2.96
	-10°C	3639	1418	2.57
	-15°C	3040	1371	2.22
	-20°C	2512	1321	1.90
	-25°C	2031	1264	1.61
	-30°C	1569	1194	1.31
45°C Condensing Temperature	10°C	6104	1890	3.23
	5°C	5209	1819	2.86
	0°C	4444	1760	2.53
	-5°C	3783	1709	2.21
	-10°C	3200	1661	1.93
	-15°C	2670	1612	1.66
	-20°C	2165	1558	1.39
	-25°C	1660	1494	1.11
	-30°C	1129	1416	0.80

	Evaporating Temperature (°C)	Cooling Capacity (w)	Power Consumption (W)	Efficiency (w/W)
55°C Condensing Temperature	10°C	4881	2265	2.15
	5°C	4199	2206	1.90
	0°C	3601	2157	1.67
	-5°C	3061	2113	1.45
	-10°C	2552	2071	1.23
	-15°C	2049	2027	1.01
	-20°C	1526	1975	0.77
	-25°C	956	1912	0.50