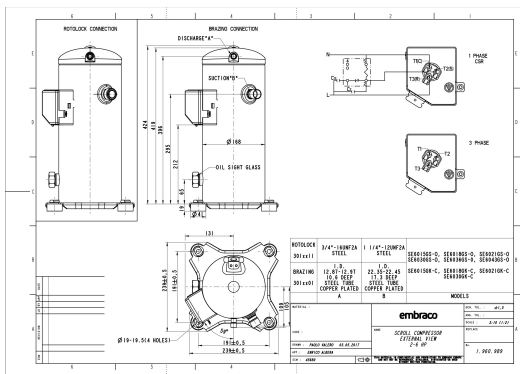


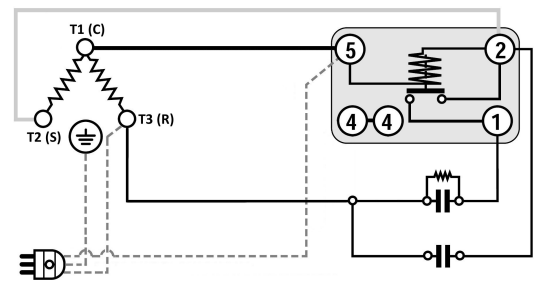
### GENERAL DATA

<b>Type:</b>	Hermetic Scroll Compressor
<b>Refrigerant:</b>	R404A
<b>Application:</b>	MBP
<b>Evaporating Temperature Range:</b>	-30°C to 10°C
<b>Voltage/Frequency:</b>	220 V 50 ~1
<b>Compressor Cooling:</b>	Static
<b>Technology Type:</b>	Hermetic Scroll Compressor
<b>Tube connections:</b>	Brazing
<b>Packing Quantity:</b>	9
<b>Horse Power:</b>	2
<b>Oil Type:</b>	POE 32
<b>Oil Initial Charge volume:</b>	1.4 l
<b>Oil Recharge volume:</b>	1.25 l
<b>Free Internal Volume:</b>	3.6 l - 1 l
<b>Refrigerant Charge:</b>	2.8 l
<b>Institute Approvals:</b>	CE

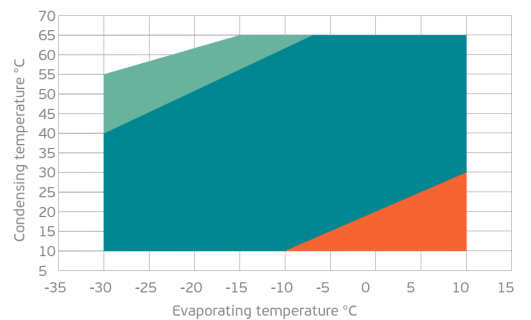
### EXTERNAL DIMENSIONS



### WIRING DIAGRAM



### OPERATING ENVELOPE



## MECHANICAL DATA

<b>Displacement:</b>	33.3 cm <sup>3</sup> /rev (5.8 m <sup>3</sup> /h)
<b>Maximum Recommended Refrigerant Charge:</b>	2.8 ml
<b>Weight:</b>	32 kg

At maximum evaporating temperature and maximum ambient temperature.

## ELECTRICAL DATA

<b>Motor Type:</b>	Induction motor -
<b>Pole:</b>	2 -
<b>Starting Torque:</b>	HST -
<b>Voltage Working Range 50Hz:</b>	198-242 V
<b>Voltage Working Range 60Hz:</b>	- V
<b>Maximum Motor Temperature:</b>	130 °C
<b>Motor Insulation Class:</b>	B -
<b>Run Winding Resistance:</b>	0.7 Ω (± 10%) at 25°C
<b>Start Winding Resistance:</b>	1.4 Ω (± 10%) at 25°C

At maximum evaporating temperature and maximum ambient temperature.

## ELECTRICAL COMPONENTS

	Component type	Description	Code
<b>Starting Device:</b>	Potential Relay	HLR3800-3E3D	-
<b>Motor Protection:</b>	Internal Protector	-	-
<b>Start Capacitor:</b>	Electrolytic type, standard duty, P1 fuse	160 uF (≥ 330V)	-
<b>Run Capacitor:</b>	Polypropylene type, Class B/450V, P2 fuse	60 uF (≥ 450V)	-
<b>CSR Box:</b>	yes	-	-

## ACCESSORIES

	Includes
<b>Cover:</b>	yes
<b>Cover Gasket:</b>	yes
<b>Grounding Screw:</b>	yes
<b>Liquid Injection:</b>	-
<b>Temperature Sensor:</b>	-
<b>Grommets:</b>	yes
<b>Sleeves:</b>	yes
<b>Crankase Heater:</b>	70
<b>Noise Insulation:</b>	-
<b>Rotolock Valves:</b>	-
<b>Rotolock Adapter:</b>	-
<b>Service Valves:</b>	-

For additional accessories please contact our technical support

## EXTERNAL CHARACTERISTICS

<b>Base Plate Max Dimensions:</b>	239x239mm
<b>Base Plate Holes Interaxis:</b>	191x191mm
<b>Height:</b>	419mm
<b>Compressor Shell Diameter:</b>	168mm
<b>Hanger Tab:</b>	yes
<b>Oil Side Glass:</b>	yes

	Shape	Material	Internal Diameter (mm)
<b>Suction Connector</b>	Brazing	Copper plated steel tube	ID 22.4 mm
<b>Discharge Connector</b>	Brazing	Copper plated steel tube	ID 12.92 mm

**RATED POINTS**

	220V 50Hz	220V 50Hz
<b>Conditions</b>	EN12900: Te -10°C; Tc 45°C; Rg 20°C; No subcooling; Ta 35°C	ARI540(2004): Te -6.7°C; Tc 48.9°C; Rg 4.4°C; No subcooling; Ta 35°C
<b>Capacity (W)</b>	3567	3560
<b>Power Input (W)</b>	1800	1978
<b>COP (W/W)</b>	1.89	1.72
<b>Rated Load Amps RLA (A)</b>	8.5	9.4
<b>Locked Rotor Amps LRA (A)</b>	76	76
<b>Maximum Operating Current MOC (A)</b>	16.2	16.2
<b>Sound Power Level (dBA)</b>	71	71

## PERFORMANCE CURVE DATA

Standard: EN12900 / w

50 Hz

	Evaporating Temperature (°C)	Cooling Capacity (w)	Power Consumption (W)	Efficiency (w/W)
<b>35°C</b> Condensing Temperature	10°C	7284	1655	4.40
	5°C	6134	1580	3.88
	0°C	5161	1518	3.40
	-5°C	4338	1465	2.96
	-10°C	3639	1418	2.57
	-15°C	3040	1371	2.22
	-20°C	2512	1321	1.90
	-25°C	2031	1264	1.61
	-30°C	1569	1194	1.31
<b>45°C</b> Condensing Temperature	10°C	6104	1890	3.23
	5°C	5209	1819	2.86
	0°C	4444	1760	2.53
	-5°C	3783	1709	2.21
	-10°C	3200	1661	1.93
	-15°C	2670	1612	1.66
	-20°C	2165	1558	1.39
	-25°C	1660	1494	1.11
	-30°C	1129	1416	0.80

	Evaporating Temperature (°C)	Cooling Capacity (w)	Power Consumption (W)	Efficiency (w/W)
55°C Condensing Temperature	10°C	4881	2265	2.15
	5°C	4199	2206	1.90
	0°C	3601	2157	1.67
	-5°C	3061	2113	1.45
	-10°C	2552	2071	1.23
	-15°C	2049	2027	1.01
	-20°C	1526	1975	0.77
	-25°C	956	1912	0.50