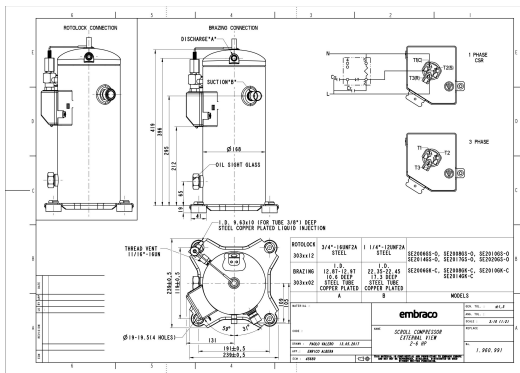


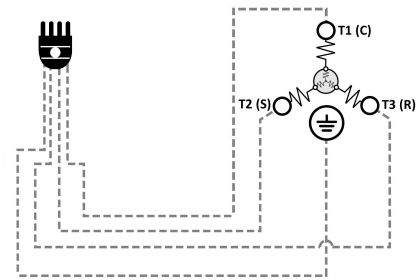
**GENERAL DATA**

|                                       |                            |
|---------------------------------------|----------------------------|
| <b>Type:</b>                          | Hermetic Scroll Compressor |
| <b>Refrigerant:</b>                   | R404A                      |
| <b>Application:</b>                   | LBP                        |
| <b>Evaporating Temperature Range:</b> | -40°C to 0°C               |
| <b>Voltage/Frequency:</b>             | 380 V 50 ~3<br>460 V 60 ~3 |
| <b>Compressor Cooling:</b>            | Static                     |
| <b>Technology Type:</b>               | On-Off                     |
| <b>Tube connections:</b>              | Rotolock                   |
| <b>Packing Quantity:</b>              | 9                          |
| <b>Horse Power:</b>                   | 5                          |
| <b>Oil Type:</b>                      | POE 32                     |
| <b>Oil Initial Charge volume:</b>     | 1.4 l                      |
| <b>Oil Recharge volume:</b>           | 1.25 l                     |
| <b>Free Internal Volume:</b>          | 3.6 l - 1 l                |
| <b>Refrigerant Charge:</b>            | 4.5 l                      |
| <b>Institute Approvals:</b>           | <b>CE</b>                  |

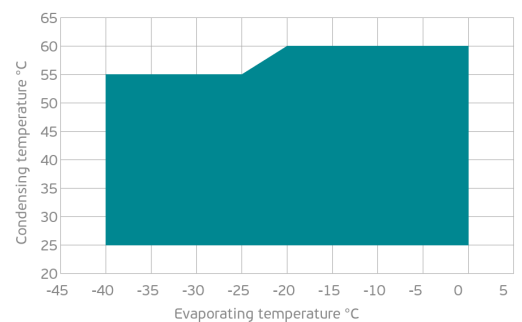
**EXTERNAL DIMENSIONS**



**WIRING DIAGRAM**



**OPERATING ENVELOPE**



## MECHANICAL DATA

|  |   |
|--|---|
| <b>Displacement:</b>                           | 83.3 cm <sup>3</sup> /rev<br>(14.5 m <sup>3</sup> /h) |
| <b>Maximum Recommended Refrigerant Charge:</b> | 4.5 ml  |
| <b>Weight:</b>                                 | 31 kg   |

At maximum evaporating temperature and maximum ambient temperature.

## ELECTRICAL DATA

|                                    |                        |
|------------------------------------|------------------------|
| <b>Motor Type:</b>                 | Induction motor -      |
| <b>Pole:</b>                       | 2 -                    |
| <b>Starting Torque:</b>            | HST -                  |
| <b>Voltage Working Range 50Hz:</b> | 342-462 V              |
| <b>Voltage Working Range 60Hz:</b> | 414-506 V              |
| <b>Maximum Motor Temperature:</b>  | 130 °C                 |
| <b>Motor Insulation Class:</b>     | B -                    |
| <b>Run Winding Resistance:</b>     | 2.45 Ω (± 10%) at 25°C |
| <b>Start Winding Resistance:</b>   | - Ω (± 10%) at 25°C    |

At maximum evaporating temperature and maximum ambient temperature.

## ELECTRICAL COMPONENTS

|                          | Component type     | Description | Code |
|--------------------------|--------------------|-------------|------|
| <b>Motor Protection:</b> | Internal protector | -           | -    |
| <b>Starting Device:</b>  | -                  | -           | -    |
| <b>Start Capacitor:</b>  | -                  | -           | -    |
| <b>Run Capacitor:</b>    | -                  | -           | -    |
| <b>CSR Box:</b>          | -                  | -           | -    |

## ACCESSORIES

|                            | Includes                  |
|----------------------------|---------------------------|
| <b>Cover:</b>              | yes                       |
| <b>Cover Gasket:</b>       | yes                       |
| <b>Grounding Screw:</b>    | yes                       |
| <b>Liquid Injection:</b>   | DTC Valve - 11/16" - 16UN |
| <b>Temperature Sensor:</b> | yes                       |
| <b>Grommets:</b>           | yes                       |
| <b>Sleeves:</b>            | yes                       |
| <b>Crankase Heater:</b>    | 70                        |
| <b>Noise Insulation:</b>   | -                         |
| <b>Rotolock Valves:</b>    | -                         |
| <b>Rotolock Adapter:</b>   | -                         |
| <b>Service Valves:</b>     | -                         |

For additional accessories please contact our technical support

## EXTERNAL CHARACTERISTICS

|                                    |           |
|------------------------------------|-----------|
| <b>Base Plate Max Dimensions:</b>  | 239x239mm |
| <b>Base Plate Holes Interaxis:</b> | 191x191mm |
| <b>Height:</b>                     | 419mm     |
| <b>Compressor Shell Diameter:</b>  | 168mm     |
| <b>Hanger Tab:</b>                 | yes       |
| <b>Oil Side Glass:</b>             | yes       |

|                            | Shape    | Material                 | Internal Diameter (mm) |
|----------------------------|----------|--------------------------|------------------------|
| <b>Suction Connector</b>   | Rotolock | Copper plated steel tube | 1 1/4"-12 UNF 2A       |
| <b>Discharge Connector</b> | Rotolock | Copper plated steel tube | 3/4"-16 UNF 2A         |

## RATED POINTS

|  | 380V 50Hz   | 460V 60Hz   | 380V 50Hz   | 460V 60Hz   |
|--|---|---|---|---|
| <b>Conditions</b>                        | EN12900: Te -35°C; Tc 40°C; Rg 20°C. No subcooling; Ta 35°C | EN12900: Te -35°C; Tc 40°C; Rg 20°C. No subcooling; Ta 35°C | ARI540(2015): Te -31.6°C; Tc 40.6°C; Rg 4.4°C; No subcooling; Ta 35°C | ARI540(2015): Te -31.6°C; Tc 40.6°C; Rg 4.4°C; No subcooling; Ta 35°C |
| <b>Capacity (W)</b>                      | 3470  | 4164  | 3730  | 4476  |
| <b>Power Input (W)</b>                   | 2744  | 3292  | 2891  | 3469  |
| <b>COP (W/W)</b>                         | 1.26  | 1.26  | 1.29  | 1.29  |
| <b>Rated Load Amps RLA (A)</b>           | 6.3   | 6.3   | 6.6   | 6.6   |
| <b>Locked Rotor Amps LRA (A)</b>         | 60  | 60  | 60  | 60  |
| <b>Maximum Operating Current MOC (A)</b> | 10.3  | 10.3  | 10.3  | 10.3  |
| <b>Sound Power Level (dBA)</b>           | 73  | 75  | 73  | 75  |

**PERFORMANCE CURVE DATA**

Standard: EN 12900 / w

50 Hz

|                                       | Evaporating Temperature (°C) | Cooling Capacity (w) | Power Consumption (W) | Efficiency (w/W) |
|---------------------------------------|------------------------------|----------------------|-----------------------|------------------|
| <b>35°C</b><br>Condensing Temperature | 0°C                          | 13 954               | 3 657                 | 3.82             |
|                                       | -5°C                         | 11 860               | 3 478                 | 3.41             |
|                                       | -10°C                        | 9 989                | 3 303                 | 3.02             |
|                                       | -15°C                        | 8 332                | 3 132                 | 2.66             |
|                                       | -20°C                        | 6 878                | 2 966                 | 2.32             |
|                                       | -25°C                        | 5 618                | 2 807                 | 2.00             |
|                                       | -30°C                        | 4 543                | 2 654                 | 1.71             |
|                                       | -35°C                        | 3 641                | 2 509                 | 1.45             |
|                                       | -40°C                        | 2 905                | 2 372                 | 1.22             |
| <b>45°C</b><br>Condensing Temperature | 0°C                          | 12 045               | 4 245                 | 2.84             |
|                                       | -5°C                         | 10 228               | 4 047                 | 2.53             |
|                                       | -10°C                        | 8 608                | 3 854                 | 2.23             |
|                                       | -15°C                        | 7 177                | 3 666                 | 1.96             |
|                                       | -20°C                        | 5 924                | 3 486                 | 1.70             |
|                                       | -25°C                        | 4 840                | 3 312                 | 1.46             |
|                                       | -30°C                        | 3 915                | 3 147                 | 1.24             |
|                                       | -35°C                        | 3 140                | 2 991                 | 1.05             |
|                                       | -40°C                        | 2 505                | 2 844                 | 0.88             |

|                                   | Evaporating Temperature (°C) | Cooling Capacity (w) | Power Consumption (W) | Efficiency (w/W) |
|-----------------------------------|------------------------------|----------------------|-----------------------|------------------|
| 55°C<br>Condensing<br>Temperature | 0°C                          | 9 939                | 5 017                 | 1.98             |
|                                   | -5°C                         | 8 429                | 4 810                 | 1.75             |
|                                   | -10°C                        | 7 091                | 4 609                 | 1.54             |
|                                   | -15°C                        | 5 917                | 4 416                 | 1.34             |
|                                   | -20°C                        | 4 896                | 4 230                 | 1.16             |
|                                   | -25°C                        | 4 019                | 4 053                 | 0.99             |
|                                   | -30°C                        | 3 276                | 3 885                 | 0.84             |
|                                   | -35°C                        | 2 658                | 3 727                 | 0.71             |
|                                   | -40°C                        | 2 154                | 3 580                 | 0.60             |