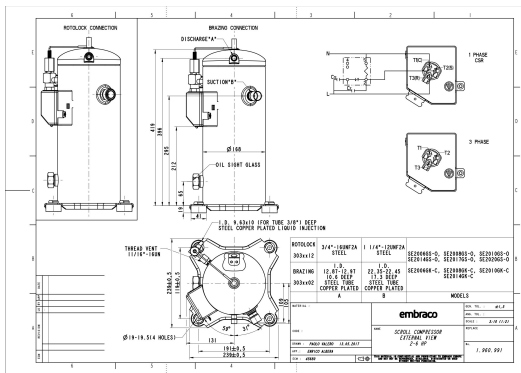


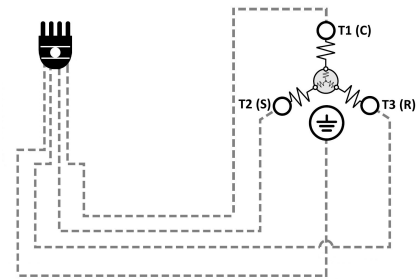
### GENERAL DATA

<b>Type:</b>	Hermetic Scroll Compressor
<b>Refrigerant:</b>	R404A
<b>Application:</b>	LBP
<b>Evaporating Temperature Range:</b>	-40°C to 0°C
<b>Voltage/Frequency:</b>	380 V 50 ~3 460 V 60 ~3
<b>Compressor Cooling:</b>	Static
<b>Technology Type:</b>	On-Off
<b>Tube connections:</b>	Brazing
<b>Packing Quantity:</b>	9
<b>Horse Power:</b>	5
<b>Oil Type:</b>	POE 32
<b>Oil Initial Charge volume:</b>	1.4 l
<b>Oil Recharge volume:</b>	1.25 l
<b>Free Internal Volume:</b>	3.6 l - 1 l
<b>Refrigerant Charge:</b>	4.5 l
<b>Institute Approvals:</b>	<b>CE</b>

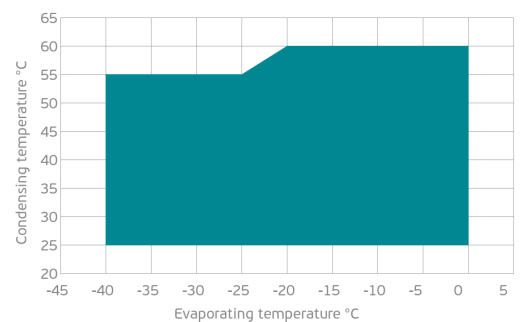
### EXTERNAL DIMENSIONS



### WIRING DIAGRAM



### OPERATING ENVELOPE



## MECHANICAL DATA

<b>Displacement:</b>	83.3 cm <sup>3</sup> /rev (14.5 m <sup>3</sup> /h)
<b>Maximum Recommended Refrigerant Charge:</b>	4.5 ml
<b>Weight:</b>	31 kg

At maximum evaporating temperature and maximum ambient temperature.

## ELECTRICAL DATA

<b>Motor Type:</b>	Induction motor -
<b>Pole:</b>	2 -
<b>Starting Torque:</b>	HST -
<b>Voltage Working Range 50Hz:</b>	342-462 V
<b>Voltage Working Range 60Hz:</b>	414-506 V
<b>Maximum Motor Temperature:</b>	130 °C
<b>Motor Insulation Class:</b>	B -
<b>Run Winding Resistance:</b>	2.45 Ω (± 10%) at 25°C
<b>Start Winding Resistance:</b>	- Ω (± 10%) at 25°C

At maximum evaporating temperature and maximum ambient temperature.

## ELECTRICAL COMPONENTS

	Component type	Description	Code
<b>Motor Protection:</b>	Internal protector	-	-
<b>Starting Device:</b>	-	-	-
<b>Start Capacitor:</b>	-	-	-
<b>Run Capacitor:</b>	-	-	-
<b>CSR Box:</b>	-	-	-

## ACCESSORIES

	Includes
<b>Cover:</b>	yes
<b>Cover Gasket:</b>	yes
<b>Grounding Screw:</b>	yes
<b>Liquid Injection:</b>	DTC Valve - 11/16" - 16UN
<b>Temperature Sensor:</b>	yes
<b>Grommets:</b>	yes
<b>Sleeves:</b>	yes
<b>Crankase Heater:</b>	70
<b>Noise Insulation:</b>	-
<b>Rotolock Valves:</b>	-
<b>Rotolock Adapter:</b>	-
<b>Service Valves:</b>	-

For additional accessories please contact our technical support

## EXTERNAL CHARACTERISTICS

<b>Base Plate Max Dimensions:</b>	239x239mm
<b>Base Plate Holes Interaxis:</b>	191x191mm
<b>Height:</b>	419mm
<b>Compressor Shell Diameter:</b>	168mm
<b>Hanger Tab:</b>	yes
<b>Oil Side Glass:</b>	yes

	Shape	Material	Internal Diameter (mm)
<b>Suction Connector</b>	Brazing	Copper plated steel tube	ID 22.4 mm
<b>Discharge Connector</b>	Brazing	Copper plated steel tube	ID 12.92 mm

## RATED POINTS

	380V 50Hz	460V 60Hz	380V 50Hz	460V 60Hz
<b>Conditions</b>	EN12900: Te -35°C; Tc 40°C; Rg 20°C. No subcooling; Ta 35°C	EN12900: Te -35°C; Tc 40°C; Rg 20°C. No subcooling; Ta 35°C	ARI540(2015): Te -31.6°C; Tc 40.6°C; Rg 4.4°C; No subcooling; Ta 35°C	ARI540(2015): Te -31.6°C; Tc 40.6°C; Rg 4.4°C; No subcooling; Ta 35°C
<b>Capacity (W)</b>	3470	4164	3730	4476
<b>Power Input (W)</b>	2744	3292	2891	3469
<b>COP (W/W)</b>	1.26	1.26	1.29	1.29
<b>Rated Load Amps RLA (A)</b>	6.3	6.3	6.6	6.6
<b>Locked Rotor Amps LRA (A)</b>	60	60	60	60
<b>Maximum Operating Current MOC (A)</b>	10.3	10.3	10.3	10.3
<b>Sound Power Level (dBA)</b>	73	75	73	75

**PERFORMANCE CURVE DATA**

Standard: EN 12900 / w

50 Hz

	Evaporating Temperature (°C)	Cooling Capacity (w)	Power Consumption (W)	Efficiency (w/W)
<b>35°C</b> Condensing Temperature	0°C	13 954	3 657	3.82
	-5°C	11 860	3 478	3.41
	-10°C	9 989	3 303	3.02
	-15°C	8 332	3 132	2.66
	-20°C	6 878	2 966	2.32
	-25°C	5 618	2 807	2.00
	-30°C	4 543	2 654	1.71
	-35°C	3 641	2 509	1.45
	-40°C	2 905	2 372	1.22
<b>45°C</b> Condensing Temperature	0°C	12 045	4 245	2.84
	-5°C	10 228	4 047	2.53
	-10°C	8 608	3 854	2.23
	-15°C	7 177	3 666	1.96
	-20°C	5 924	3 486	1.70
	-25°C	4 840	3 312	1.46
	-30°C	3 915	3 147	1.24
	-35°C	3 140	2 991	1.05
	-40°C	2 505	2 844	0.88

	Evaporating Temperature (°C)	Cooling Capacity (w)	Power Consumption (W)	Efficiency (w/W)
55°C Condensing Temperature	0°C	9 939	5 017	1.98
	-5°C	8 429	4 810	1.75
	-10°C	7 091	4 609	1.54
	-15°C	5 917	4 416	1.34
	-20°C	4 896	4 230	1.16
	-25°C	4 019	4 053	0.99
	-30°C	3 276	3 885	0.84
	-35°C	2 658	3 727	0.71
	-40°C	2 154	3 580	0.60