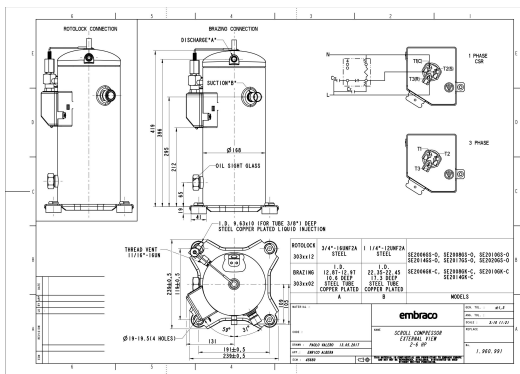


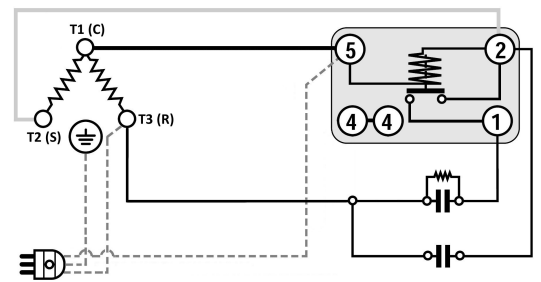
### GENERAL DATA

<b>Type:</b>	Hermetic Scroll Compressor
<b>Refrigerant:</b>	R404A
<b>Application:</b>	LBP
<b>Evaporating Temperature Range:</b>	-40°C to 0°C
<b>Voltage/Frequency:</b>	220 V 50 ~1
<b>Compressor Cooling:</b>	Static
<b>Technology Type:</b>	On-Off
<b>Tube connections:</b>	Brazing
<b>Packing Quantity:</b>	9
<b>Horse Power:</b>	4
<b>Oil Type:</b>	POE 32
<b>Oil Initial Charge volume:</b>	1.4 l
<b>Oil Recharge volume:</b>	1.25 l
<b>Free Internal Volume:</b>	3.2 l - 1 l
<b>Refrigerant Charge:</b>	4.5 l
<b>Institute Approvals:</b>	<b>CE</b>

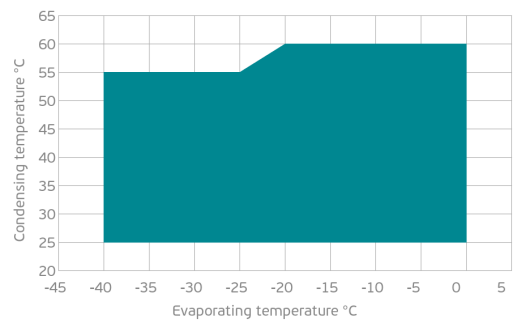
### EXTERNAL DIMENSIONS



### WIRING DIAGRAM



### OPERATING ENVELOPE



## MECHANICAL DATA

<b>Displacement:</b>	67.8 cm <sup>3</sup> /rev (11.8 m <sup>3</sup> /h)
<b>Maximum Recommended Refrigerant Charge:</b>	4.5 ml
<b>Weight:</b>	34 kg

At maximum evaporating temperature and maximum ambient temperature.

## ELECTRICAL DATA

<b>Motor Type:</b>	Induction motor -
<b>Pole:</b>	2 -
<b>Starting Torque:</b>	HST -
<b>Voltage Working Range 50Hz:</b>	198-242 V
<b>Voltage Working Range 60Hz:</b>	- V
<b>Maximum Motor Temperature:</b>	130 °C
<b>Motor Insulation Class:</b>	B -
<b>Run Winding Resistance:</b>	0.5 Ω (± 10%) at 25°C
<b>Start Winding Resistance:</b>	1.3 Ω (± 10%) at 25°C

At maximum evaporating temperature and maximum ambient temperature.

## ELECTRICAL COMPONENTS

	Component type	Description	Code
<b>Motor Protection:</b>	Internal protector	-	-
<b>CSR Box:</b>	yes	-	-
<b>Starting Device:</b>	Potential Relay	HLR3800-3H3D	-
<b>Start Capacitor:</b>	Electrolytic type, standard duty, P1 fuse	250 uF (≥ 330V)	-
<b>Run Capacitor:</b>	Polypropylene type, Class B/450V, P2 fuse	80 uF (≥ 450V)	-

## ACCESSORIES

	Includes
<b>Cover:</b>	yes
<b>Cover Gasket:</b>	yes
<b>Grounding Screw:</b>	yes
<b>Liquid Injection:</b>	DTC Valve - 11/16" - 16UN
<b>Temperature Sensor:</b>	yes
<b>Grommets:</b>	yes
<b>Sleeves:</b>	yes
<b>Crankase Heater:</b>	70
<b>Noise Insulation:</b>	-
<b>Rotolock Valves:</b>	-
<b>Rotolock Adapter:</b>	-
<b>Service Valves:</b>	-

For additional accessories please contact our technical support

## EXTERNAL CHARACTERISTICS

<b>Base Plate Max Dimensions:</b>	239x239mm
<b>Base Plate Holes Interaxis:</b>	191x191mm
<b>Height:</b>	419mm
<b>Compressor Shell Diameter:</b>	168mm
<b>Hanger Tab:</b>	yes
<b>Oil Side Glass:</b>	yes

	Shape	Material	Internal Diameter (mm)
<b>Suction Connector</b>	Brazing	Copper plated steel tube	ID 22.4 mm
<b>Discharge Connector</b>	Brazing	Copper plated steel tube	ID 12.92 mm



**RATED POINTS**

	220V 50Hz	220V 50Hz
<b>Conditions</b>	EN12900: Te -35°C; Tc 40°C; Rg 20°C. No subcooling; Ta 35°C	ARI540(2015): Te -31.6°C; Tc 40.6°C; Rg 4.4°C; No subcooling; Ta 35°C
<b>Capacity (W)</b>	2925	3145
<b>Power Input (W)</b>	2441	2569
<b>COP (W/W)</b>	1.2	1.22
<b>Rated Load Amps RLA (A)</b>	11.6	12.5
<b>Locked Rotor Amps LRA (A)</b>	109	109
<b>Maximum Operating Current MOC (A)</b>	23.3	23.3
<b>Sound Power Level (dBA)</b>	73	73

**PERFORMANCE CURVE DATA**

Standard: EN 12900 / w

50 Hz

	Evaporating Temperature (°C)	Cooling Capacity (w)	Power Consumption (W)	Efficiency (w/W)
<b>35°C</b> Condensing Temperature	0°C	11 762	3 252	3.62
	-5°C	9 997	3 093	3.23
	-10°C	8 421	2 937	2.87
	-15°C	7 023	2 785	2.52
	-20°C	5 798	2 638	2.20
	-25°C	4 736	2 496	1.90
	-30°C	3 829	2 360	1.62
	-35°C	3 070	2 231	1.38
	-40°C	2 449	2 109	1.16
<b>45°C</b> Condensing Temperature	0°C	10 153	3 774	2.69
	-5°C	8 621	3 598	2.40
	-10°C	7 256	3 427	2.12
	-15°C	6 050	3 260	1.86
	-20°C	4 994	3 100	1.61
	-25°C	4 080	2 945	1.39
	-30°C	3 301	2 798	1.18
	-35°C	2 647	2 659	1.00
	-40°C	2 112	2 529	0.84

	Evaporating Temperature (°C)	Cooling Capacity (w)	Power Consumption (W)	Efficiency (w/W)
55°C Condensing Temperature	0°C	8 378	4 461	1.88
	-5°C	7 105	4 277	1.66
	-10°C	5 978	4 099	1.46
	-15°C	4 988	3 927	1.27
	-20°C	4 127	3 761	1.10
	-25°C	3 388	3 604	0.94
	-30°C	2 762	3 455	0.80
	-35°C	2 241	3 314	0.68
	-40°C	1 816	3 184	0.57