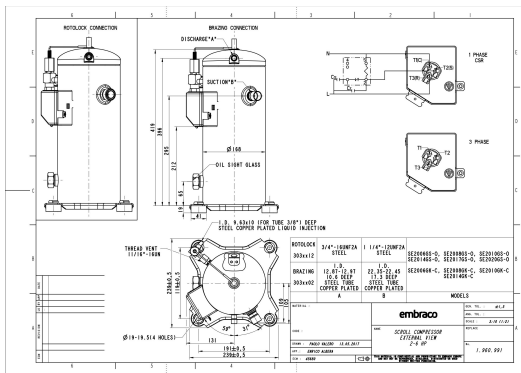


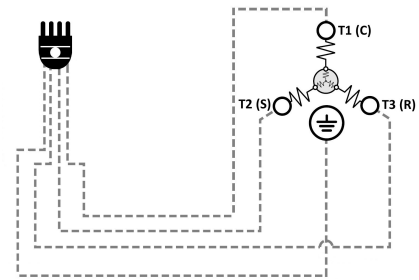
### GENERAL DATA

<b>Type:</b>	Hermetic Scroll Compressor
<b>Refrigerant:</b>	R404A
<b>Application:</b>	LBP
<b>Evaporating Temperature Range:</b>	-40°C to 0°C
<b>Voltage/Frequency:</b>	380 V 50 ~3 460 V 60 ~3
<b>Compressor Cooling:</b>	Static
<b>Technology Type:</b>	On-Off
<b>Tube connections:</b>	Brazing
<b>Packing Quantity:</b>	9
<b>Horse Power:</b>	3
<b>Oil Type:</b>	POE 32
<b>Oil Initial Charge volume:</b>	1.4 l
<b>Oil Recharge volume:</b>	1.25 l
<b>Free Internal Volume:</b>	3.8 l - 1 l
<b>Refrigerant Charge:</b>	3.5 l
<b>Institute Approvals:</b>	<b>CE</b>

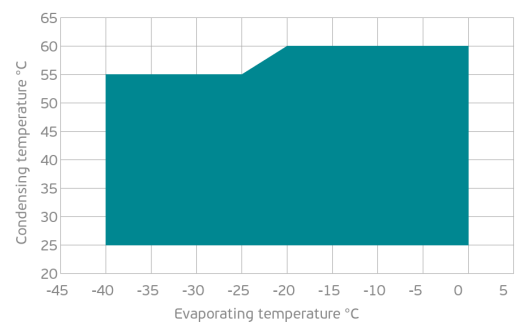
### EXTERNAL DIMENSIONS



### WIRING DIAGRAM



### OPERATING ENVELOPE



## MECHANICAL DATA

<b>Displacement:</b>	46.6 cm <sup>3</sup> /rev (8.1 m <sup>3</sup> /h)
<b>Maximum Recommended Refrigerant Charge:</b>	3.5 ml
<b>Weight:</b>	30 kg

At maximum evaporating temperature and maximum ambient temperature.

## ELECTRICAL DATA

<b>Motor Type:</b>	Induction motor -
<b>Pole:</b>	2 -
<b>Starting Torque:</b>	HST -
<b>Voltage Working Range 50Hz:</b>	342-462 V
<b>Voltage Working Range 60Hz:</b>	414-506 V
<b>Maximum Motor Temperature:</b>	130 °C
<b>Motor Insulation Class:</b>	B -
<b>Run Winding Resistance:</b>	3.3 Ω (± 10%) at 25°C
<b>Start Winding Resistance:</b>	- Ω (± 10%) at 25°C

At maximum evaporating temperature and maximum ambient temperature.

## ELECTRICAL COMPONENTS

	Component type	Description	Code
<b>Motor Protection:</b>	Internal protector	-	-
<b>Starting Device:</b>	-	-	-
<b>Start Capacitor:</b>	-	-	-
<b>Run Capacitor:</b>	-	-	-
<b>CSR Box:</b>	-	-	-

## ACCESSORIES

	Includes
<b>Cover:</b>	yes
<b>Cover Gasket:</b>	yes
<b>Grounding Screw:</b>	yes
<b>Liquid Injection:</b>	DTC Valve - 11/16" - 16UN
<b>Temperature Sensor:</b>	yes
<b>Grommets:</b>	yes
<b>Sleeves:</b>	yes
<b>Crankase Heater:</b>	70
<b>Noise Insulation:</b>	-
<b>Rotolock Valves:</b>	-
<b>Rotolock Adapter:</b>	-
<b>Service Valves:</b>	-

For additional accessories please contact our technical support

## EXTERNAL CHARACTERISTICS

<b>Base Plate Max Dimensions:</b>	239x239mm
<b>Base Plate Holes Interaxis:</b>	191x191mm
<b>Height:</b>	419mm
<b>Compressor Shell Diameter:</b>	168mm
<b>Hanger Tab:</b>	yes
<b>Oil Side Glass:</b>	yes

	Shape	Material	Internal Diameter (mm)
<b>Suction Connector</b>	Brazing	Copper plated steel tube	ID 22.4 mm
<b>Discharge Connector</b>	Brazing	Copper plated steel tube	ID 12.92 mm



## RATED POINTS

	380V 50Hz	460V 60Hz	380V 50Hz	460V 60Hz
<b>Conditions</b>	EN12900: Te -35°C; Tc 40°C; Rg 20°C. No subcooling; Ta 35°C	EN12900: Te -35°C; Tc 40°C; Rg 20°C. No subcooling; Ta 35°C	ARI540(2015): Te -31.6°C; Tc 40.6°C; Rg 4.4°C; No subcooling; Ta 35°C	ARI540(2015): Te -31.6°C; Tc 40.6°C; Rg 4.4°C; No subcooling; Ta 35°C
<b>Capacity (W)</b>	1933	2320	2079	2495
<b>Power Input (W)</b>	1732	2078	1823	2188
<b>COP (W/W)</b>	1.12	1.12	1.14	1.14
<b>Rated Load Amps RLA (A)</b>	4.3	4.3	4.5	4.5
<b>Locked Rotor Amps LRA (A)</b>	45	45	45	45
<b>Maximum Operating Current MOC (A)</b>	5.8	5.8	5.8	5.8
<b>Sound Power Level (dBA)</b>	71	73	71	73

**PERFORMANCE CURVE DATA**

Standard: EN 12900 / w

50 Hz

	Evaporating Temperature (°C)	Cooling Capacity (w)	Power Consumption (W)	Efficiency (w/W)
<b>35°C</b> Condensing Temperature	0°C	7 775	2 308	3.37
	-5°C	6 609	2 195	3.01
	-10°C	5 566	2 084	2.67
	-15°C	4 643	1 976	2.35
	-20°C	3 833	1 872	2.05
	-25°C	3 131	1 771	1.77
	-30°C	2 531	1 675	1.51
	-35°C	2 029	1 583	1.28
	-40°C	1 619	1 497	1.08
<b>45°C</b> Condensing Temperature	0°C	6 712	2 678	2.51
	-5°C	5 699	2 553	2.23
	-10°C	4 797	2 432	1.97
	-15°C	3 999	2 314	1.73
	-20°C	3 301	2 200	1.50
	-25°C	2 697	2 090	1.29
	-30°C	2 182	1 986	1.10
	-35°C	1 750	1 887	0.93
	-40°C	1 396	1 795	0.78

	Evaporating Temperature (°C)	Cooling Capacity (w)	Power Consumption (W)	Efficiency (w/W)
55°C Condensing Temperature	0°C	5 538	3 166	1.75
	-5°C	4 697	3 035	1.55
	-10°C	3 952	2 909	1.36
	-15°C	3 297	2 786	1.18
	-20°C	2 729	2 669	1.02
	-25°C	2 240	2 558	0.88
	-30°C	1 826	2 452	0.74
	-35°C	1 482	2 352	0.63
	-40°C	1 201	2 260	0.53