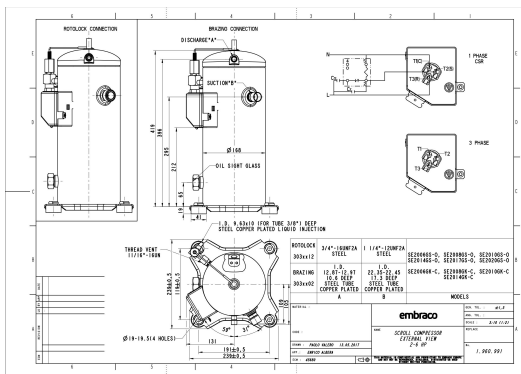


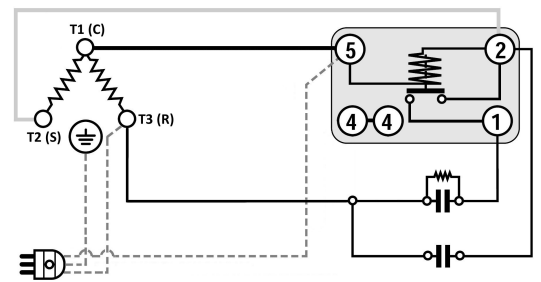
### GENERAL DATA

<b>Type:</b>	Hermetic Scroll Compressor
<b>Refrigerant:</b>	R404A
<b>Application:</b>	LBP
<b>Evaporating Temperature Range:</b>	-40°C to 0°C
<b>Voltage/Frequency:</b>	220 V 50 ~1
<b>Compressor Cooling:</b>	Static
<b>Technology Type:</b>	On-Off
<b>Tube connections:</b>	Rotolock
<b>Packing Quantity:</b>	9
<b>Horse Power:</b>	3
<b>Oil Type:</b>	POE 32
<b>Oil Initial Charge volume:</b>	1.4 l
<b>Oil Recharge volume:</b>	1.25 l
<b>Free Internal Volume:</b>	3.6 l - 1 l
<b>Refrigerant Charge:</b>	3.5 l
<b>Institute Approvals:</b>	<b>CE</b>

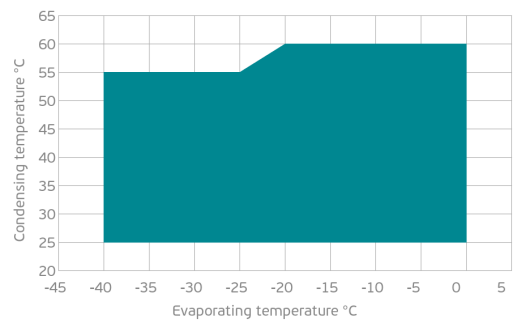
### EXTERNAL DIMENSIONS



### WIRING DIAGRAM



### OPERATING ENVELOPE



## MECHANICAL DATA

<b>Displacement:</b>	46.6 cm <sup>3</sup> /rev (8.1 m <sup>3</sup> /h)
<b>Maximum Recommended Refrigerant Charge:</b>	3.5 ml
<b>Weight:</b>	32 kg

At maximum evaporating temperature and maximum ambient temperature.

## ELECTRICAL DATA

<b>Motor Type:</b>	Induction motor -
<b>Pole:</b>	2 -
<b>Starting Torque:</b>	HST -
<b>Voltage Working Range 50Hz:</b>	198-242 V
<b>Voltage Working Range 60Hz:</b>	- V
<b>Maximum Motor Temperature:</b>	130 °C
<b>Motor Insulation Class:</b>	B -
<b>Run Winding Resistance:</b>	0.7 Ω (± 10%) at 25°C
<b>Start Winding Resistance:</b>	1.4 Ω (± 10%) at 25°C

At maximum evaporating temperature and maximum ambient temperature.

## ELECTRICAL COMPONENTS

	Component type	Description	Code
<b>Motor Protection:</b>	Internal protector	-	-
<b>Starting Device:</b>	Potential Relay	HLR3800-3E3D	-
<b>Start Capacitor:</b>	Electrolytic type, standard duty, P1 fuse	160 uF (≥ 330V)	-
<b>Run Capacitor:</b>	Polypropylene type, Class B/450V, P2 fuse	60 uF (≥ 450V)	-
<b>CSR Box:</b>	yes	-	-

## ACCESSORIES

	Includes
<b>Cover:</b>	yes
<b>Cover Gasket:</b>	yes
<b>Grounding Screw:</b>	yes
<b>Liquid Injection:</b>	DTC Valve - 11/16" - 16UN
<b>Temperature Sensor:</b>	yes
<b>Grommets:</b>	yes
<b>Sleeves:</b>	yes
<b>Crankase Heater:</b>	70
<b>Noise Insulation:</b>	-
<b>Rotolock Valves:</b>	-
<b>Rotolock Adapter:</b>	-
<b>Service Valves:</b>	-

For additional accessories please contact our technical support

## EXTERNAL CHARACTERISTICS

<b>Base Plate Max Dimensions:</b>	239x239mm
<b>Base Plate Holes Interaxis:</b>	191x191mm
<b>Height:</b>	419mm
<b>Compressor Shell Diameter:</b>	168mm
<b>Hanger Tab:</b>	yes
<b>Oil Side Glass:</b>	yes

	Shape	Material	Internal Diameter (mm)
<b>Suction Connector</b>	Rotolock	Copper plated steel tube	1 1/4"-12 UNF 2A
<b>Discharge Connector</b>	Rotolock	Copper plated steel tube	3/4"-16 UNF 2A



**RATED POINTS**

	220V 50Hz	220V 50Hz
<b>Conditions</b>	EN12900: Te -35°C; Tc 40°C; Rg 20°C. No subcooling; Ta 35°C	ARI540(2015): Te -31.6°C; Tc 40.6°C; Rg 4.4°C; No subcooling; Ta 35°C
<b>Capacity (W)</b>	1933	2079
<b>Power Input (W)</b>	1772	1866
<b>COP (W/W)</b>	1.09	1.11
<b>Rated Load Amps RLA (A)</b>	8.4	9.1
<b>Locked Rotor Amps LRA (A)</b>	76	76
<b>Maximum Operating Current MOC (A)</b>	16.2	16.2
<b>Sound Power Level (dBA)</b>	71	71

**PERFORMANCE CURVE DATA**

Standard: EN 12900 / w

50 Hz

	Evaporating Temperature (°C)	Cooling Capacity (w)	Power Consumption (W)	Efficiency (w/W)
<b>35°C</b> Condensing Temperature	0°C	7 775	2 362	3.29
	-5°C	6 609	2 247	2.94
	-10°C	5 566	2 133	2.61
	-15°C	4 643	2 023	2.29
	-20°C	3 833	1 916	2.00
	-25°C	3 131	1 813	1.73
	-30°C	2 531	1 714	1.48
	-35°C	2 029	1 621	1.25
	-40°C	1 619	1 532	1.06
<b>45°C</b> Condensing Temperature	0°C	6 712	2 742	2.45
	-5°C	5 699	2 614	2.18
	-10°C	4 797	2 489	1.93
	-15°C	3 999	2 369	1.69
	-20°C	3 301	2 252	1.47
	-25°C	2 697	2 140	1.26
	-30°C	2 182	2 033	1.07
	-35°C	1 750	1 932	0.91
	-40°C	1 396	1 837	0.76

	Evaporating Temperature (°C)	Cooling Capacity (w)	Power Consumption (W)	Efficiency (w/W)
55°C Condensing Temperature	0°C	5 538	3 241	1.71
	-5°C	4 697	3 107	1.51
	-10°C	3 952	2 978	1.33
	-15°C	3 297	2 853	1.16
	-20°C	2 729	2 733	1.00
	-25°C	2 240	2 619	0.86
	-30°C	1 826	2 510	0.73
	-35°C	1 482	2 408	0.62
	-40°C	1 201	2 314	0.52