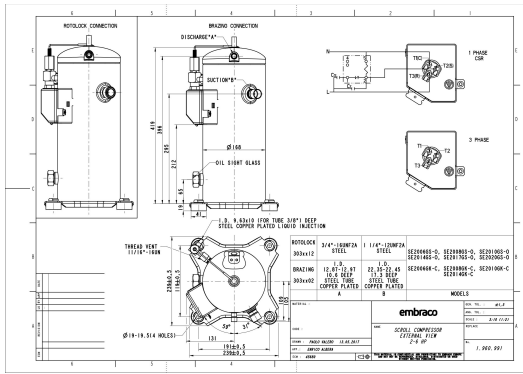


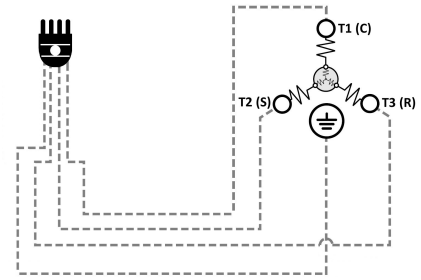
GENERAL DATA

Type:	Hermetic Scroll Compressor
Refrigerant:	R404A
Application:	LBP
Evaporating Temperature Range:	-40°C to 0°C
Voltage/Frequency:	380 V 50 ~3 460 V 60 ~3
Compressor Cooling:	Static
Technology Type:	On-Off
Tube connections:	Rotolock
Packing Quantity:	9
Horse Power:	2.5
Oil Type:	POE 32
Oil Initial Charge volume:	1.4 l
Oil Recharge volume:	1.25 l
Free Internal Volume:	4.1 l - 1 l
Refrigerant Charge:	3.5 l
Institute Approvals:	CE

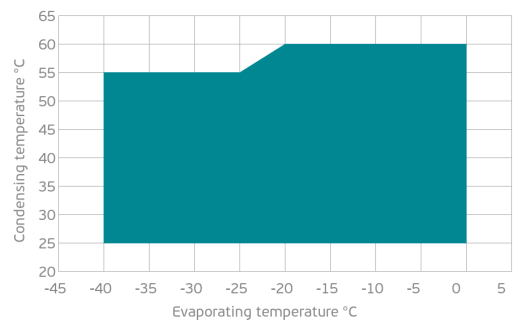
EXTERNAL DIMENSIONS



WIRING DIAGRAM



OPERATING ENVELOPE



MECHANICAL DATA

Displacement:	42 cm ³ /rev (7.3 m ³ /h)
Maximum Recommended Refrigerant Charge:	3.5 ml
Weight:	29 kg

At maximum evaporating temperature and maximum ambient temperature.

ELECTRICAL DATA

Motor Type:	Induction motor -
Pole:	2 -
Starting Torque:	HST -
Voltage Working Range 50Hz:	342-462 V
Voltage Working Range 60Hz:	414-506 V
Maximum Motor Temperature:	130 °C
Motor Insulation Class:	B -
Run Winding Resistance:	6.7 Ω (± 10%) at 25°C
Start Winding Resistance:	- Ω (± 10%) at 25°C

At maximum evaporating temperature and maximum ambient temperature.

ELECTRICAL COMPONENTS

	Component type	Description	Code
Motor Protection:	Internal protector	-	-
Starting Device:	-	-	-
Start Capacitor:	-	-	-
Run Capacitor:	-	-	-
CSR Box:	-	-	-

ACCESSORIES

	Includes
Cover:	yes
Cover Gasket:	yes
Grounding Screw:	yes
Liquid Injection:	DTC Valve - 11/16" - 16UN
Temperature Sensor:	yes
Grommets:	yes
Sleeves:	yes
Crankcase Heater:	70
Noise Insulation:	-
Rotolock Valves:	-
Rotolock Adapter:	-
Service Valves:	-

For additional accessories please contact our technical support

EXTERNAL CHARACTERISTICS

Base Plate Max Dimensions:	239x239mm
Base Plate Holes Interaxis:	191x191mm
Height:	419mm
Compressor Shell Diameter:	168mm
Hanger Tab:	yes
Oil Side Glass:	yes

	Shape	Material	Internal Diameter (mm)
Suction Connector	Rotolock	Copper plated steel tube	1 1/4"-12 UNF 2A
Discharge Connector	Rotolock	Copper plated steel tube	3/4"-16 UNF 2A



RATED POINTS

	380V 50Hz	460V 60Hz	380V 50Hz	460V 60Hz
Conditions	EN12900: Te -35°C; Tc 40°C; Rg 20°C. No subcooling; Ta 35°C	EN12900: Te -35°C; Tc 40°C; Rg 20°C. No subcooling; Ta 35°C	ARI540(2015): Te -31.6°C; Tc 40.6°C; Rg 4.4°C; No subcooling; Ta 35°C	ARI540(2015): Te -31.6°C; Tc 40.6°C; Rg 4.4°C; No subcooling; Ta 35°C
Capacity (W)	1646	1975	1770	2124
Power Input (W)	1489	1787	1567	1880
COP (W/W)	1.11	1.11	1.13	1.13
Rated Load Amps RLA (A)	2.7	2.7	2.9	2.9
Locked Rotor Amps LRA (A)	22	22	22	22
Maximum Operating Current MOC (A)	4.4	4.4	4.4	4.4
Sound Power Level (dBA)	71	73	71	73

PERFORMANCE CURVE DATA

Standard: EN 12900 / w

50 Hz

	Evaporating Temperature (°C)	Cooling Capacity (w)	Power Consumption (W)	Efficiency (w/W)
35°C Condensing Temperature	0°C	6 620	1 984	3.34
	-5°C	5 626	1 887	2.98
	-10°C	4 739	1 792	2.65
	-15°C	3 953	1 699	2.33
	-20°C	3 263	1 609	2.03
	-25°C	2 665	1 522	1.75
	-30°C	2 155	1 440	1.50
	-35°C	1 728	1 361	1.27
	-40°C	1 378	1 287	1.07
45°C Condensing Temperature	0°C	5 714	2 303	2.48
	-5°C	4 852	2 195	2.21
	-10°C	4 084	2 091	1.95
	-15°C	3 405	1 989	1.71
	-20°C	2 810	1 891	1.49
	-25°C	2 296	1 797	1.28
	-30°C	1 858	1 707	1.09
	-35°C	1 490	1 622	0.92
	-40°C	1 189	1 543	0.77

	Evaporating Temperature (°C)	Cooling Capacity (w)	Power Consumption (W)	Efficiency (w/W)
55°C Condensing Temperature	0°C	4 715	2 722	1.73
	-5°C	3 999	2 610	1.53
	-10°C	3 364	2 501	1.35
	-15°C	2 807	2 396	1.17
	-20°C	2 323	2 295	1.01
	-25°C	1 907	2 199	0.87
	-30°C	1 554	2 108	0.74
	-35°C	1 261	2 022	0.62
	-40°C	1 022	1 943	0.53