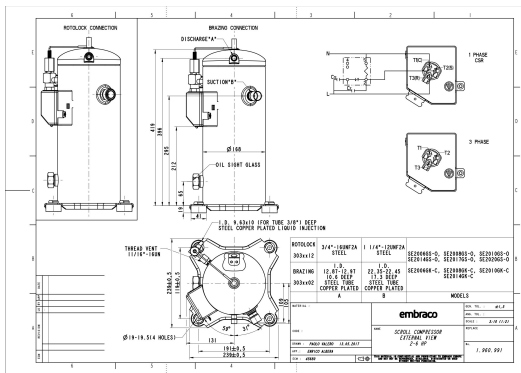


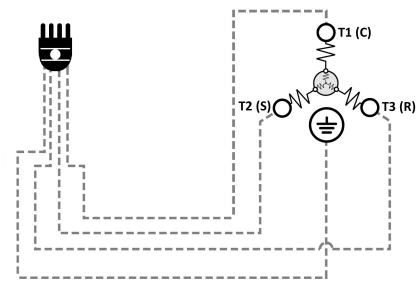
### GENERAL DATA

<b>Type:</b>	Hermetic Scroll Compressor
<b>Refrigerant:</b>	R404A
<b>Application:</b>	LBP
<b>Evaporating Temperature Range:</b>	-40°C to 0°C
<b>Voltage/Frequency:</b>	380 V 50 ~3 460 V 60 ~3
<b>Compressor Cooling:</b>	Static
<b>Technology Type:</b>	On-Off
<b>Tube connections:</b>	Brazing
<b>Packing Quantity:</b>	9
<b>Horse Power:</b>	2.5
<b>Oil Type:</b>	POE 32
<b>Oil Initial Charge volume:</b>	1.4 l
<b>Oil Recharge volume:</b>	1.25 l
<b>Free Internal Volume:</b>	4.1 l - 1 l
<b>Refrigerant Charge:</b>	3.5 l
<b>Institute Approvals:</b>	<b>CE</b>

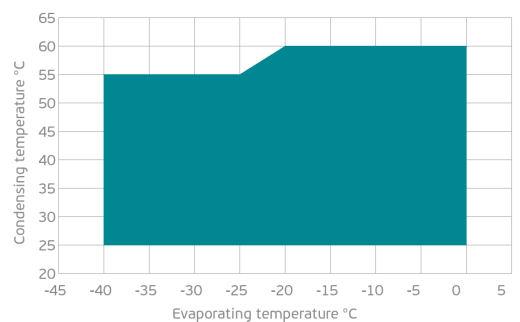
### EXTERNAL DIMENSIONS



### WIRING DIAGRAM



### OPERATING ENVELOPE



## MECHANICAL DATA

<b>Displacement:</b>	42 cm <sup>3</sup> /rev (7.3 m <sup>3</sup> /h)
<b>Maximum Recommended Refrigerant Charge:</b>	3.5 ml
<b>Weight:</b>	29 kg

At maximum evaporating temperature and maximum ambient temperature.

## ELECTRICAL DATA

<b>Motor Type:</b>	Induction motor -
<b>Pole:</b>	2 -
<b>Starting Torque:</b>	HST -
<b>Voltage Working Range 50Hz:</b>	342-462 V
<b>Voltage Working Range 60Hz:</b>	414-506 V
<b>Maximum Motor Temperature:</b>	130 °C
<b>Motor Insulation Class:</b>	B -
<b>Run Winding Resistance:</b>	6.7 Ω (± 10%) at 25°C
<b>Start Winding Resistance:</b>	- Ω (± 10%) at 25°C

At maximum evaporating temperature and maximum ambient temperature.

## ELECTRICAL COMPONENTS

	Component type	Description	Code
<b>Motor Protection:</b>	Internal protector	-	-
<b>Starting Device:</b>	-	-	-
<b>Start Capacitor:</b>	-	-	-
<b>Run Capacitor:</b>	-	-	-
<b>CSR Box:</b>	-	-	-

## ACCESSORIES

	Includes
<b>Cover:</b>	yes
<b>Cover Gasket:</b>	yes
<b>Grounding Screw:</b>	yes
<b>Liquid Injection:</b>	DTC Valve - 11/16" - 16UN
<b>Temperature Sensor:</b>	yes
<b>Grommets:</b>	yes
<b>Sleeves:</b>	yes
<b>Crankase Heater:</b>	70
<b>Noise Insulation:</b>	-
<b>Rotolock Valves:</b>	-
<b>Rotolock Adapter:</b>	-
<b>Service Valves:</b>	-

For additional accessories please contact our technical support

## EXTERNAL CHARACTERISTICS

<b>Base Plate Max Dimensions:</b>	239x239mm
<b>Base Plate Holes Interaxis:</b>	191x191mm
<b>Height:</b>	419mm
<b>Compressor Shell Diameter:</b>	168mm
<b>Hanger Tab:</b>	yes
<b>Oil Side Glass:</b>	yes

	Shape	Material	Internal Diameter (mm)
<b>Suction Connector</b>	Brazing	Copper plated steel tube	ID 22.4 mm
<b>Discharge Connector</b>	Brazing	Copper plated steel tube	ID 12.92 mm



## RATED POINTS

Conditions	380V 50Hz	460V 60Hz	380V 50Hz	460V 60Hz
	EN12900: Te -35°C; Tc 40°C; Rg 20°C. No subcooling; Ta 35°C	EN12900: Te -35°C; Tc 40°C; Rg 20°C. No subcooling; Ta 35°C	ARI540(2015): Te -31.6°C; Tc 40.6°C; Rg 4.4°C; No subcooling; Ta 35°C	ARI540(2015): Te -31.6°C; Tc 40.6°C; Rg 4.4°C; No subcooling; Ta 35°C
Capacity (W)	1646	1975	1770	2124
Power Input (W)	1489	1787	1567	1880
COP (W/W)	1.11	1.11	1.13	1.13
Rated Load Amps RLA (A)	2.7	2.7	2.9	2.9
Locked Rotor Amps LRA (A)	22	22	22	22
Maximum Operating Current MOC (A)	4.4	4.4	4.4	4.4
Sound Power Level (dBA)	71	73	71	73

**PERFORMANCE CURVE DATA**

Standard: EN 12900 / w

50 Hz

	Evaporating Temperature (°C)	Cooling Capacity (w)	Power Consumption (W)	Efficiency (w/W)
<b>35°C</b> Condensing Temperature	0°C	6 620	1 984	3.34
	-5°C	5 626	1 887	2.98
	-10°C	4 739	1 792	2.65
	-15°C	3 953	1 699	2.33
	-20°C	3 263	1 609	2.03
	-25°C	2 665	1 522	1.75
	-30°C	2 155	1 440	1.50
	-35°C	1 728	1 361	1.27
	-40°C	1 378	1 287	1.07
<b>45°C</b> Condensing Temperature	0°C	5 714	2 303	2.48
	-5°C	4 852	2 195	2.21
	-10°C	4 084	2 091	1.95
	-15°C	3 405	1 989	1.71
	-20°C	2 810	1 891	1.49
	-25°C	2 296	1 797	1.28
	-30°C	1 858	1 707	1.09
	-35°C	1 490	1 622	0.92
	-40°C	1 189	1 543	0.77

	Evaporating Temperature (°C)	Cooling Capacity (w)	Power Consumption (W)	Efficiency (w/W)
55°C Condensing Temperature	0°C	4 715	2 722	1.73
	-5°C	3 999	2 610	1.53
	-10°C	3 364	2 501	1.35
	-15°C	2 807	2 396	1.17
	-20°C	2 323	2 295	1.01
	-25°C	1 907	2 199	0.87
	-30°C	1 554	2 108	0.74
	-35°C	1 261	2 022	0.62
	-40°C	1 022	1 943	0.53