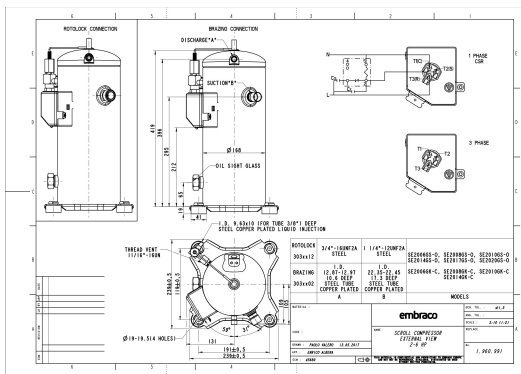


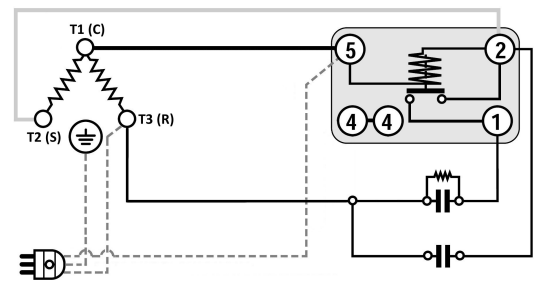
### GENERAL DATA

<b>Type:</b>	Hermetic Scroll Compressor
<b>Refrigerant:</b>	R404A
<b>Application:</b>	LBP
<b>Evaporating Temperature Range:</b>	-40°C to 0°C
<b>Voltage/Frequency:</b>	220 V 50 ~1
<b>Compressor Cooling:</b>	Static
<b>Technology Type:</b>	On-Off
<b>Tube connections:</b>	Rotolock
<b>Packing Quantity:</b>	9
<b>Horse Power:</b>	2.5
<b>Oil Type:</b>	POE 32
<b>Oil Initial Charge volume:</b>	1.4 l
<b>Oil Recharge volume:</b>	1.25 l
<b>Free Internal Volume:</b>	3.6 l - 1 l
<b>Refrigerant Charge:</b>	3.5 l
<b>Institute Approvals:</b>	<b>CE</b>

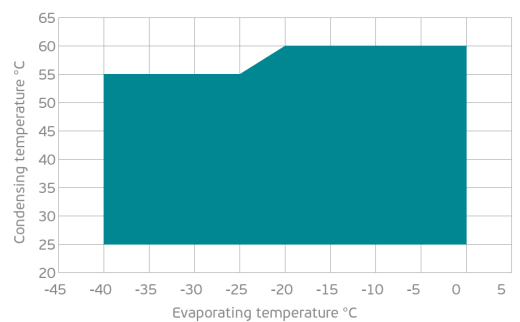
### EXTERNAL DIMENSIONS



### WIRING DIAGRAM



### OPERATING ENVELOPE



## MECHANICAL DATA

<b>Displacement:</b>	42 cm <sup>3</sup> /rev (7.3 m <sup>3</sup> /h)
<b>Maximum Recommended Refrigerant Charge:</b>	3.5 ml
<b>Weight:</b>	32 kg

At maximum evaporating temperature and maximum ambient temperature.

## ELECTRICAL DATA

<b>Motor Type:</b>	Induction motor -
<b>Pole:</b>	2 -
<b>Starting Torque:</b>	HST -
<b>Voltage Working Range 50Hz:</b>	198-242 V
<b>Voltage Working Range 60Hz:</b>	- V
<b>Maximum Motor Temperature:</b>	130 °C
<b>Motor Insulation Class:</b>	B -
<b>Run Winding Resistance:</b>	0.7 Ω (± 10%) at 25°C
<b>Start Winding Resistance:</b>	1.4 Ω (± 10%) at 25°C

At maximum evaporating temperature and maximum ambient temperature.

## ELECTRICAL COMPONENTS

	Component type	Description	Code
<b>Motor Protection:</b>	Internal protector	-	-
<b>Starting Device:</b>	Potential Relay	HLR3800-3E3D	-
<b>Start Capacitor:</b>	Electrolytic type, standard duty, P1 fuse	160 uF (≥ 330V)	-
<b>Run Capacitor:</b>	Polypropylene type, Class B/450V, P2 fuse	60 uF (≥ 450V)	-
<b>CSR Box:</b>	yes	-	-

## ACCESSORIES

	Includes
<b>Cover:</b>	yes
<b>Cover Gasket:</b>	yes
<b>Grounding Screw:</b>	yes
<b>Liquid Injection:</b>	DTC Valve - 11/16" - 16UN
<b>Temperature Sensor:</b>	yes
<b>Grommets:</b>	yes
<b>Sleeves:</b>	yes
<b>Crankase Heater:</b>	70
<b>Noise Insulation:</b>	-
<b>Rotolock Valves:</b>	-
<b>Rotolock Adapter:</b>	-
<b>Service Valves:</b>	-

For additional accessories please contact our technical support

## EXTERNAL CHARACTERISTICS

<b>Base Plate Max Dimensions:</b>	239x239mm
<b>Base Plate Holes Interaxis:</b>	191x191mm
<b>Height:</b>	419mm
<b>Compressor Shell Diameter:</b>	168mm
<b>Hanger Tab:</b>	yes
<b>Oil Side Glass:</b>	yes

	Shape	Material	Internal Diameter (mm)
<b>Suction Connector</b>	Rotolock	Copper plated steel tube	1 1/4"-12 UNF 2A
<b>Discharge Connector</b>	Rotolock	Copper plated steel tube	3/4"-16 UNF 2A



**RATED POINTS**

	220V 50Hz	220V 50Hz
<b>Conditions</b>	EN12900: Te -35°C; Tc 40°C; Rg 20°C. No subcooling; Ta 35°C	ARI540(2015): Te -31.6°C; Tc 40.6°C; Rg 4.4°C; No subcooling; Ta 35°C
<b>Capacity (W)</b>	1646	1770
<b>Power Input (W)</b>	1519	1599
<b>COP (W/W)</b>	1.09	1.11
<b>Rated Load Amps RLA (A)</b>	7.2	7.8
<b>Locked Rotor Amps LRA (A)</b>	76	76
<b>Maximum Operating Current MOC (A)</b>	14.2	14.2
<b>Sound Power Level (dBA)</b>	71	71

**PERFORMANCE CURVE DATA**

Standard: EN 12900 / w

50 Hz

	Evaporating Temperature (°C)	Cooling Capacity (w)	Power Consumption (W)	Efficiency (w/W)
<b>35°C</b> Condensing Temperature	0°C	6 620	2 024	3.27
	-5°C	5 626	1 925	2.92
	-10°C	4 739	1 828	2.59
	-15°C	3 953	1 733	2.28
	-20°C	3 263	1 642	1.99
	-25°C	2 665	1 553	1.72
	-30°C	2 155	1 469	1.47
	-35°C	1 728	1 389	1.24
	-40°C	1 378	1 313	1.05
<b>45°C</b> Condensing Temperature	0°C	5 714	2 349	2.43
	-5°C	4 852	2 240	2.17
	-10°C	4 084	2 133	1.91
	-15°C	3 405	2 029	1.68
	-20°C	2 810	1 929	1.46
	-25°C	2 296	1 833	1.25
	-30°C	1 858	1 742	1.07
	-35°C	1 490	1 655	0.90
	-40°C	1 189	1 574	0.76

	Evaporating Temperature (°C)	Cooling Capacity (w)	Power Consumption (W)	Efficiency (w/W)
55°C Condensing Temperature	0°C	4 715	2 776	1.70
	-5°C	3 999	2 662	1.50
	-10°C	3 364	2 551	1.32
	-15°C	2 807	2 444	1.15
	-20°C	2 323	2 341	0.99
	-25°C	1 907	2 243	0.85
	-30°C	1 554	2 150	0.72
	-35°C	1 261	2 063	0.61
	-40°C	1 022	1 982	0.52