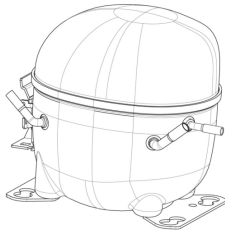


220-240V 50Hz 1~**GENERAL DATA****Application:** LBP**Refrigerant:** R134a**Evaporating Temperature Range:** -30°C to -5°C**Compressor Cooling:** Fan**Fan air flow:** 520 m³/h**Maximum Condensing Pressure - Operating:** 13.92 kgf/cm² (psig)**Maximum Condensing Pressure - Peak:** 15.62 kgf/cm² (psig)**Type:** Hermetic reciprocating**Technology Type:** On-Off**Expansion Device:** Capillary Tube or Expansion Valve**Packing Quantity:** Single - 1 pcApprovals:  **MECHANICAL DATA****Bore:** 27.78 mm**Stroke:** 20 mm**Free Internal Volume:** 2.1 l**Maximum Recommended Refrigerant Charge:** 350 ml**Weight:** 10.9 kg**ELECTRICAL DATA****Motor Type:** CSIR -**Starting Torque:** HST -**Maximum Motor Temperature:** 130 °C**Start Winding Resistance:** 31.85 Ω (± 10%) at 25°C**Run Winding Resistance:** 6.25 Ω (± 10%) at 25°C**Locked Rotor Amperage (RLA):** - A**MOUNTING ACCESSORIES**

	Description	Code
Cover:	yes	2075282
Grommets:	-	2221011
Sleeves:	-	2222018
Terminal:	yes	1027060
Capacitor Bracket:	yes	2256008

ELECTRICAL COMPONENTS

	Component type	Description	Code
Starting Device:	Current relay	MTRP-0027-65	2334107
Motor Protection:	External	4TM757NFBYY-153	2316018
Start Capacitor:	-	43-53 MFD 330V	2252347

EXTERNAL CHARACTERISTICS**Base Plate:** European**Tray Holder:** No**Height:** 200

	Internal Diameter (mm)	Material	Shape
Suction Connector	8.1	Copper	Slanted 42°
Discharge Connector	6.1	Copper	Straight
Process Connector	6.1	Copper	Slanted 42°



RATED POINT DATA

220-240V 50Hz

Cooling Capacity (w)	Power Consumption (W)	Current Consumption (A)	Gas Flow Rate	Efficiency (w/W)
	±5%	±5%	±5%	±7%
346	260	2.07	6.71	1.33

PERFORMANCE CURVE DATA

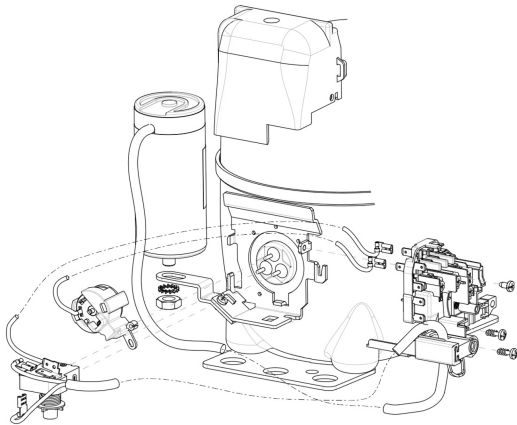
220-240V 50Hz

Condensing Temperature (°C)	Evaporating Temperature (°C)	Cooling Capacity (w)	Power Consumption (W)	Current Consumption (A)	Gas Flow Rate	Efficiency (w/W)
		±5%	±5%	±5%	±5%	±7%
35°C	-5	870	368	2.35	17.09	2.37
	-10	712	331	2.19	13.91	2.15
	-15	572	297	2.10	11.15	1.93
	-20	453	264	2.05	8.79	1.71
	-25	352	233	2.03	6.83	1.51
	-30	271	205	2.03	5.25	1.32

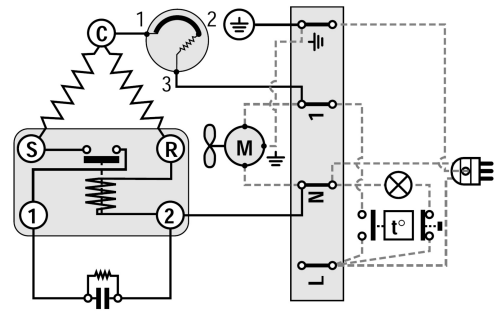
Condensing Temperature (°C)	Evaporating Temperature (°C)	Cooling Capacity (w)	Power Consumption (W)	Current Consumption (A)	Gas Flow Rate	Efficiency (w/W)
		±5%	±5%	±5%	±5%	±7%
45°C	-5	843	398	2.41	16.55	2.12
	-10	686	354	2.24	13.41	1.94
	-15	549	313	2.14	10.69	1.75
	-20	431	275	2.08	8.37	1.57
	-25	333	241	2.05	6.45	1.38
	-30	254	209	2.03	4.91	1.22

Condensing Temperature (°C)	Evaporating Temperature (°C)	Cooling Capacity (w)	Power Consumption (W)	Current Consumption (A)	Gas Flow Rate	Efficiency (w/W)
		±5%	±5%	±5%	±5%	±7%
55°C	-5	817	427	2.47	16.03	1.91
	-10	662	376	2.29	12.94	1.76
	-15	526	329	2.18	10.25	1.60
	-20	411	286	2.10	7.97	1.43
	-25	314	248	2.06	6.09	1.27

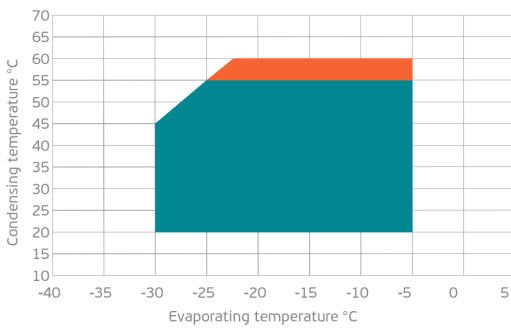
ASSEMBLY INSTRUCTION



WIRING DIAGRAM

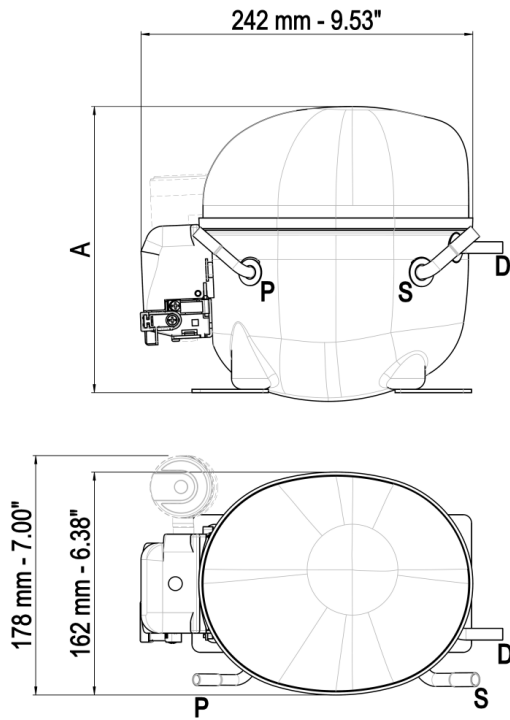


OPERATING ENVELOPE



- Operating Condition
- Transient Condition
- Superheating

NOTE: usage of compressors outside of intended working range cannot make use of the warranty, or should be consulted with Technical support.



DWG02	∅ mm	∅ in	material
S - Suction	6.10 - 6.20	0.24	Cu
P - Process	6.10 - 6.20	0.24	Cu
S - Discharge	4.86 - 5.02	3/16	Cu

DWG03	∅ mm	∅ in	material
S - Suction	8.10 - 8.20	0.32	Cu
P - Process	6.10 - 6.20	0.24	Cu
S - Discharge	6.10 - 6.20	0.24	Cu

