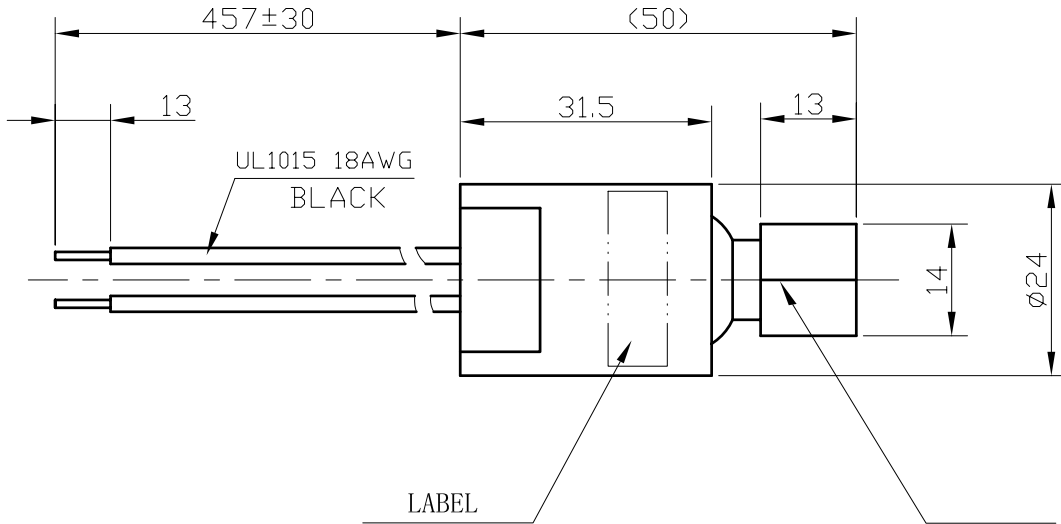


REVISION: 01

UNIT: mm



1/4" Female Flare Fitting
W/core depressor

DATE CODE

TECHNICAL SPECIFICATIONS

ACTUATION/OPEN PRESSURE	300+/-15 PSI												
RELEASE/CLOSE PRESSURE	200+/-15 PSI												
PROOF PRESSURE	600 PSI												
BURST PRESSURE	5000 PSI												
TEMPERATURE RANGE	Ambient: -30°C to +80°C Fluid: -50°C to +120°C												
ELECTRICAL RATING	50/60Hz, 36VDC, 3A												
	<table border="0"> <tr> <td>Voltage</td> <td>Amperage</td> <td></td> </tr> <tr> <td>24</td> <td>125VA</td> <td>pilot duty</td> </tr> <tr> <td>120</td> <td>375VA</td> <td>pilot duty</td> </tr> <tr> <td>240</td> <td>375VA</td> <td>pilot duty</td> </tr> </table>	Voltage	Amperage		24	125VA	pilot duty	120	375VA	pilot duty	240	375VA	pilot duty
Voltage	Amperage												
24	125VA	pilot duty											
120	375VA	pilot duty											
240	375VA	pilot duty											
LIFE AT RATED LOAD	100,000 Cycles												
DIELECTRIC STRENGTH	750 VRMS open switch 1550 VRMS terminals to fitting												
SWITCH CONFIGURATION	SPST, at atmospheric pressure: CLOSED												

CHANG  HENG®
CHANGZHOU CHANGHENG ASIA-PACIFIC AND ELECTRIC APPLIANCE CO., LTD.

CUSTOMER P/N:

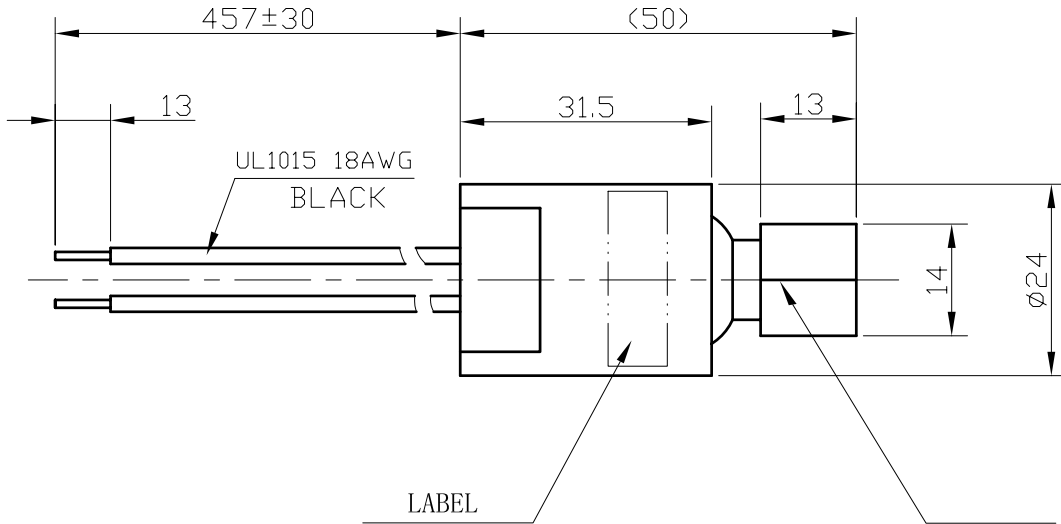
CUSTOMER P/N: PS-HP300-200MW


PRESSURE CONTROL DRAWING

MODEL - - - - - YK-03H 018-300R200R



REVISION: 01

UNIT: mm




YK-03H
018-350R250R

 DATE CODE

RU  

PRESSURE CONTROLLER
 OPEN: 350 ± 15 PSI
 CLOSE: 250 ± 15 PSI

1/4" Female Flare Fitting
W/core depressor

TECHNICAL SPECIFICATIONS

ACTUATION/OPEN PRESSURE	350+/-15 PSI												
RELEASE/CLOSE PRESSURE	250+/-15 PSI												
PROOF PRESSURE	600 PSI												
BURST PRESSURE	5000 PSI												
TEMPERATURE RANGE	Ambient: -30°C to +80°C Fluid: -50°C to +120°C												
ELECTRICAL RATING	50/60Hz, 36VDC, 3A												
	<table border="0"> <tr> <td>Voltage</td> <td>Amperage</td> <td></td> </tr> <tr> <td>24</td> <td>125VA</td> <td>pilot duty</td> </tr> <tr> <td>120</td> <td>375VA</td> <td>pilot duty</td> </tr> <tr> <td>240</td> <td>375VA</td> <td>pilot duty</td> </tr> </table>	Voltage	Amperage		24	125VA	pilot duty	120	375VA	pilot duty	240	375VA	pilot duty
Voltage	Amperage												
24	125VA	pilot duty											
120	375VA	pilot duty											
240	375VA	pilot duty											
LIFE AT RATED LOAD	100,000 Cycles												
DIELECTRIC STRENGTH	750 VRMS open switch 1550 VRMS terminals to fitting												
SWITCH CONFIGURATION	SPST, at atmospheric pressure: CLOSED												


 CHANGZHOU CHANGHENG ASIA-PACIFIC AND ELECTRIC APPLIANCE CO., LTD.

CUSTOMER P/N:

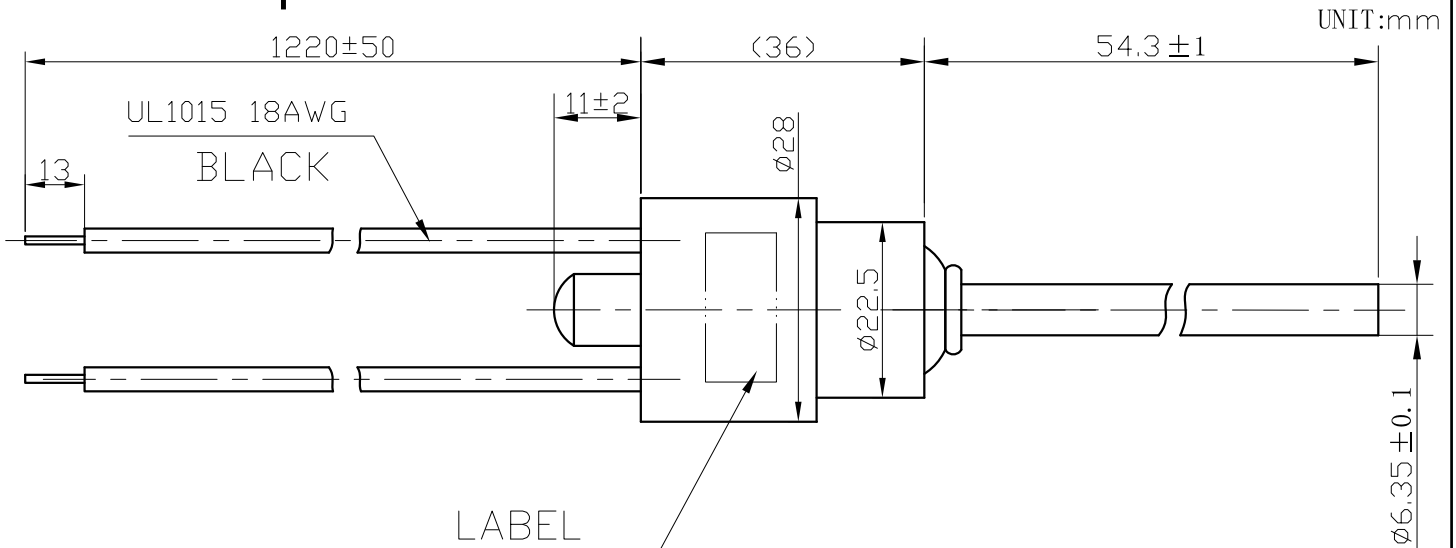
CUSTOMER P/N: **PS-HP350-250MW**

PRESSURE CONTROL DRAWING

MODEL - - - - - **YK-03H 018-350R250R**

RoHS Compliant

REVISION: 01



 	YK-M 448-350R250Z
	OPEN: 350 ± 15PSI Manual Reset: 250 ± 30PSI ***** 250V 3A

DATE CODE

Please use the cooling device, which protects the main part of controller from damaging for the high temperature, as welding.

TECHNICAL SPECIFICATIONS

ACTUATION/OPEN PRESSURE	-----	350 ± 15 PSI												
MANUAL RESET	-----	250 ± 30 PSI												
PROOF PRESSURE	-----	650 PSI												
BURST PRESSURE	-----	5000 PSI												
TEMPERATURE RANGE	-----	Ambient: -30°C to +80°C Fluid: -50°C to +120°C												
ELECTRICAL RATING	-----	250V 3A												
		<table border="0"> <tr> <td>Voltage</td> <td>Amperage</td> <td></td> </tr> <tr> <td>24</td> <td>125VA</td> <td>pilot duty</td> </tr> <tr> <td>120</td> <td>375VA</td> <td>pilot duty</td> </tr> <tr> <td>240</td> <td>375VA</td> <td>pilot duty</td> </tr> </table>	Voltage	Amperage		24	125VA	pilot duty	120	375VA	pilot duty	240	375VA	pilot duty
Voltage	Amperage													
24	125VA	pilot duty												
120	375VA	pilot duty												
240	375VA	pilot duty												
DIELECTRIC STRENGTH	-----	750 VRMS open switch 1550 VRMS terminals to fitting												
LIFE AT RATED LOAD	-----	10,000 Cycles												
SWITCH CONFIGURATION	-----	SPST, at atmospheric pressure: CLOSED												

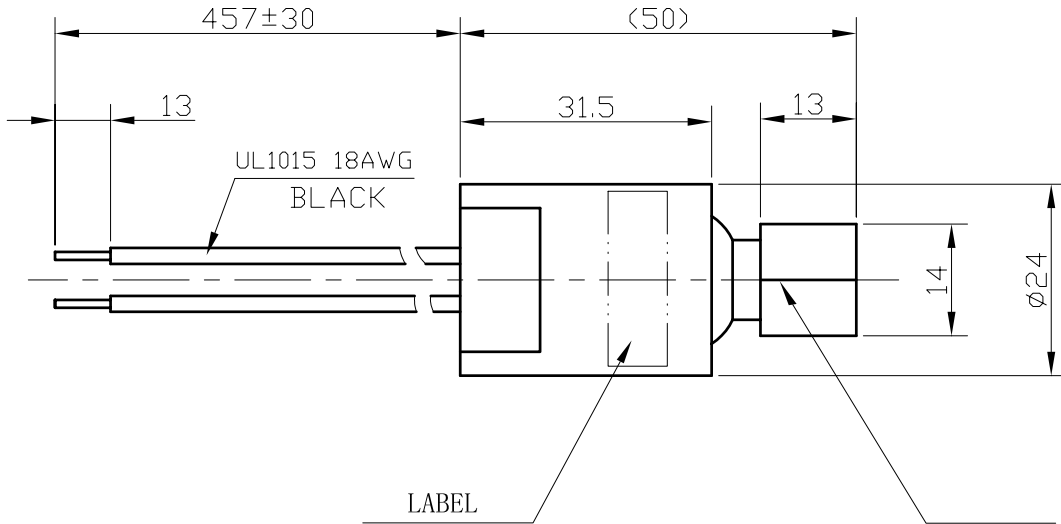
Changzhou Match-well Pressure Control Technology Co., Ltd.	CUSTOMER NAME:
	CUSTOMER P/N:
	Match-well P/N: YK-M 448-350R2520Z

DRAWING DATE: August 24, 2019

Pressure Controls

REVISION: 01

UNIT: mm



	YK-03H	PRESSURE CONTROLLER
	018-400R300R	OPEN: 400 ± 15 PSI
*****	 	CLOSE: 300 ± 15 PSI
DATE CODE		

TECHNICAL SPECIFICATIONS

ACTUATION/OPEN PRESSURE	400+/-15 PSI												
RELEASE/CLOSE PRESSURE	300+/-15 PSI												
PROOF PRESSURE	600 PSI												
BURST PRESSURE	5000 PSI												
TEMPERATURE RANGE	Ambient: -30°C to +80°C Fluid: -50°C to +120°C												
ELECTRICAL RATING	50/60Hz, 36VDC, 3A												
	<table border="0"> <tr> <td>Voltage</td> <td>Amperage</td> <td></td> </tr> <tr> <td>24</td> <td>125VA</td> <td>pilot duty</td> </tr> <tr> <td>120</td> <td>375VA</td> <td>pilot duty</td> </tr> <tr> <td>240</td> <td>375VA</td> <td>pilot duty</td> </tr> </table>	Voltage	Amperage		24	125VA	pilot duty	120	375VA	pilot duty	240	375VA	pilot duty
Voltage	Amperage												
24	125VA	pilot duty											
120	375VA	pilot duty											
240	375VA	pilot duty											
LIFE AT RATED LOAD	100,000 Cycles												
DIELECTRIC STRENGTH	750 VRMS open switch 1550 VRMS terminals to fitting												
SWITCH CONFIGURATION	SPST, at atmospheric pressure: CLOSED												


 CHANGZHOU CHANGHENG ASIA-PACIFIC AND ELECTRIC APPLIANCE CO., LTD.

CUSTOMER P/N:

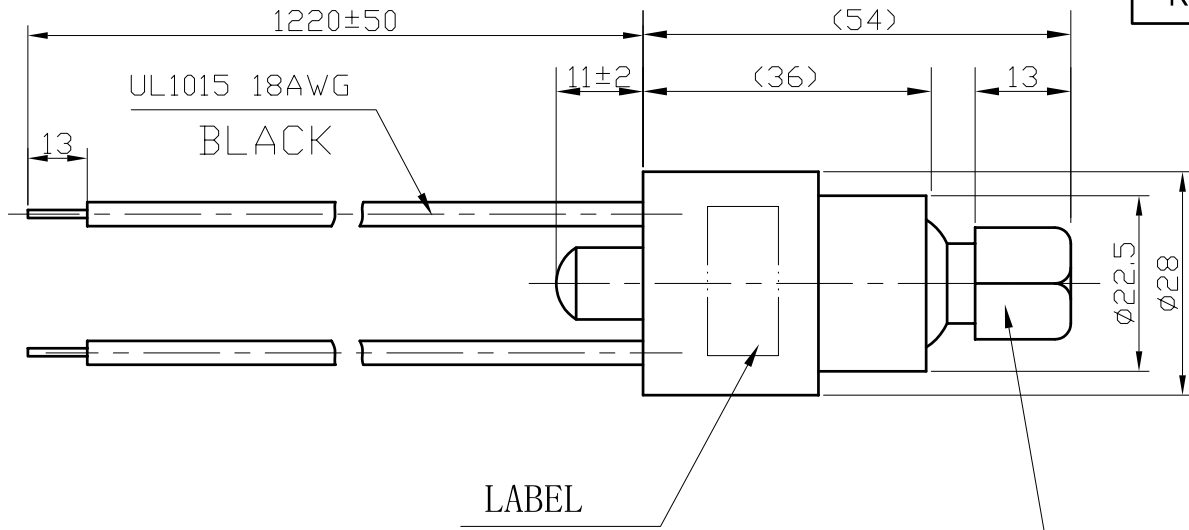
CUSTOMER P/N: PS-HP400-300MW

PRESSURE CONTROL DRAWING

MODEL - - - - - YK-03H 018-400R300R

REVISION: 02

UNIT: mm



MW[®] YK-M 048-410R310Z
YK-03H
OPEN: 410 ± 15PSI
Manual Reset: 310 ± 30PSI

UL[®] **CS** **UL**[®] **US** **DE** **CE**

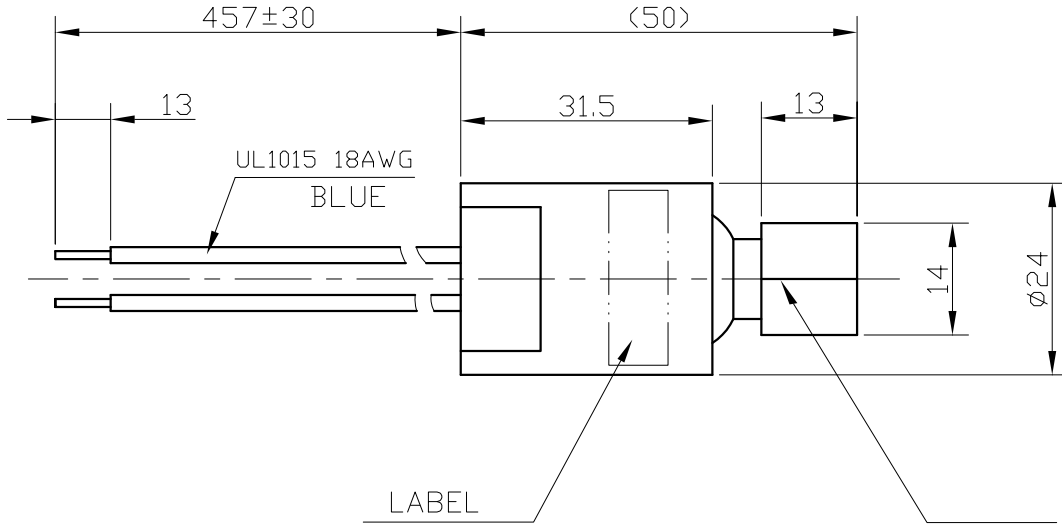
DATE CODE

TECHNICAL SPECIFICATIONS

ACTUATION/OPEN PRESSURE	410 +/-15 PSI
MANUAL RESET	310 +/-30 PSI
PROOF PRESSURE	650 PSI
BURST PRESSURE	5000 PSI
TEMPERATURE RANGE	Ambient: -30°C to +80°C Fluid: -50°C to +120°C
ELECTRICAL RATING	120/240VAC-2.9FLA 15.0LRA 375VA 24VAC-125VA 120T0277VAC-375VA 24VAC/VDC-0.4A
DIELECTRIC STRENGTH	750 VRMS open switch 1550 VRMS terminals to fitting
LIFE AT RATED LOAD	10,000 Cycles
SWITCH CONFIGURATION	SPST, at atmospheric pressure: CLOSED

Changzhou Match-well Pressure Control Technology Co., Ltd.	CUSTOMER NAME:
	CUSTOMER P/N: PS-HP410-M MW
	Match-well P/N: YK-M 048-410R310Z YK-03H
DRAWING DATE: August 22, 2012	Pressure Controls


UNIT:mm




YK-03L
018-003C015E

 DATE CODE

PRESSURE CONTROLLER
 OPEN: 3 ±3 PSI
 CLOSE: 15 ±5 PSI
 250V 6A



 0035

1/4 " Female Flare Fitting
W/core depressor

TECHNICAL SPECIFICATIONS

ACTUATION/OPEN PRESSURE	3 +/--3 PSI												
RELEASE/CLOSE PRESSURE	15+/-5 PSI												
PROOF PRESSURE	250 PSI												
BURST PRESSURE	3500 PSI												
TEMPERATURE RANGE	Ambient: -30°C to +80°C Fluid: -50°C to +120°C												
ELECTRICAL RATING	50/60Hz, 250V 6A; 36VDC, 3A												
	<table border="0"> <tr> <td>Voltage</td> <td>Amperage</td> <td></td> </tr> <tr> <td>24</td> <td>125VA</td> <td>pilot duty</td> </tr> <tr> <td>120</td> <td>375VA</td> <td>pilot duty</td> </tr> <tr> <td>240</td> <td>375VA</td> <td>pilot duty</td> </tr> </table>	Voltage	Amperage		24	125VA	pilot duty	120	375VA	pilot duty	240	375VA	pilot duty
Voltage	Amperage												
24	125VA	pilot duty											
120	375VA	pilot duty											
240	375VA	pilot duty											
LIFE AT RATED LOAD	100,000 Cycles												
DIELECTRIC STRENGTH	750 VRMS open switch 1550 VRMS terminals to fitting												
SWITCH CONFIGURATION	SPST, at atmospheric pressure: OPEN												

Changzhou Match-well Pressure Control Technology Co., Ltd.

CUSTOMER NAME:

CUSTOMER P/N: PS-LP03-15SPCMW

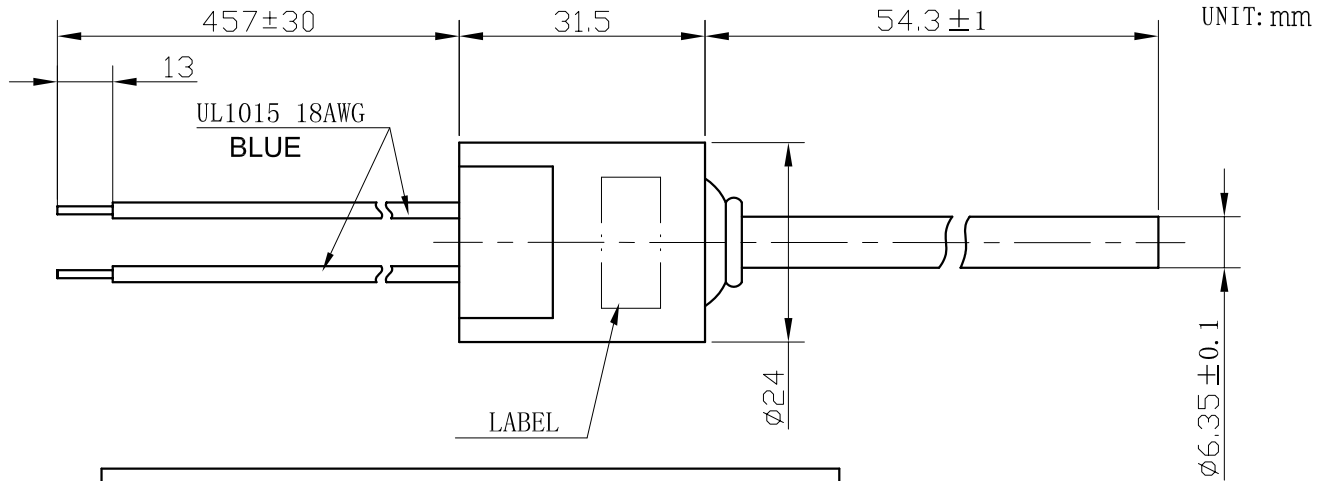
Match-well P/N: YK-03L 018-003C015E



DRAWING DATE: March 6, 2019

Pressure Controls

RoHS Compliant

REVISION: 01




YK-01L
018-005C020E PRESSURE CONTROLLER
 OPEN: 5 ± 3 PSI
 CLOSE: 20 ± 5 PSI


 DATE CODE

Please use the cooling device, which protects the main part of controller from damaging for the high temperature, as welding.

TECHNICAL SPECIFICATIONS

ACTUATION/OPEN PRESSURE	5 +/-3 PSI												
RELEASE/CLOSE PRESSURE	20 +/-5 PSI												
PROOF PRESSURE	250 PSI												
BURST PRESSURE	2500 PSI												
TEMPERATURE RANGE	Ambient: -30°C to +80°C Fluid: -50°C to +120°C												
ELECTRICAL RATING	50/60Hz, 36VDC, 3A												
	<table border="0"> <tr> <td>Voltage</td> <td>Amperage</td> <td></td> </tr> <tr> <td>24</td> <td>125VA</td> <td>pilot duty</td> </tr> <tr> <td>120</td> <td>375VA</td> <td>pilot duty</td> </tr> <tr> <td>240</td> <td>375VA</td> <td>pilot duty</td> </tr> </table>	Voltage	Amperage		24	125VA	pilot duty	120	375VA	pilot duty	240	375VA	pilot duty
Voltage	Amperage												
24	125VA	pilot duty											
120	375VA	pilot duty											
240	375VA	pilot duty											
DIELECTRIC STRENGTH	750 VRMS open switch 1550 VRMS terminals to fitting												
LIFE AT RATED LOAD	100,000 Cycles												
SWITCH CONFIGURATION	SPST, at atmospheric pressure: OPEN												

CUSTOMER NAME:

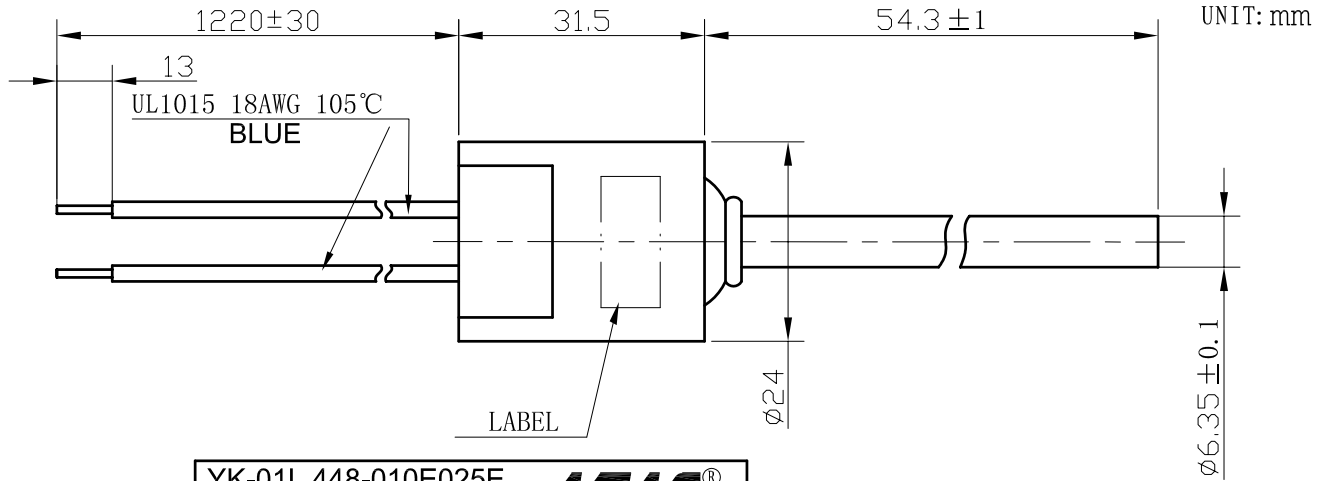
CUSTOMER P/N:

DRAWING DATE: June 20th, 2007

P/N: YK-01L 418-005C020E

RoHS Compliant

REVISION: 02



YK-01L 448-010E025E
 OPEN: 10 ± 5 PSI
 CLOSE: 25 ± 5 PSI
 XXXXXX 250V 6A






DATE CODE

Please use the cooling device, which protects the main part of controller from damaging for the high temperature, as welding.

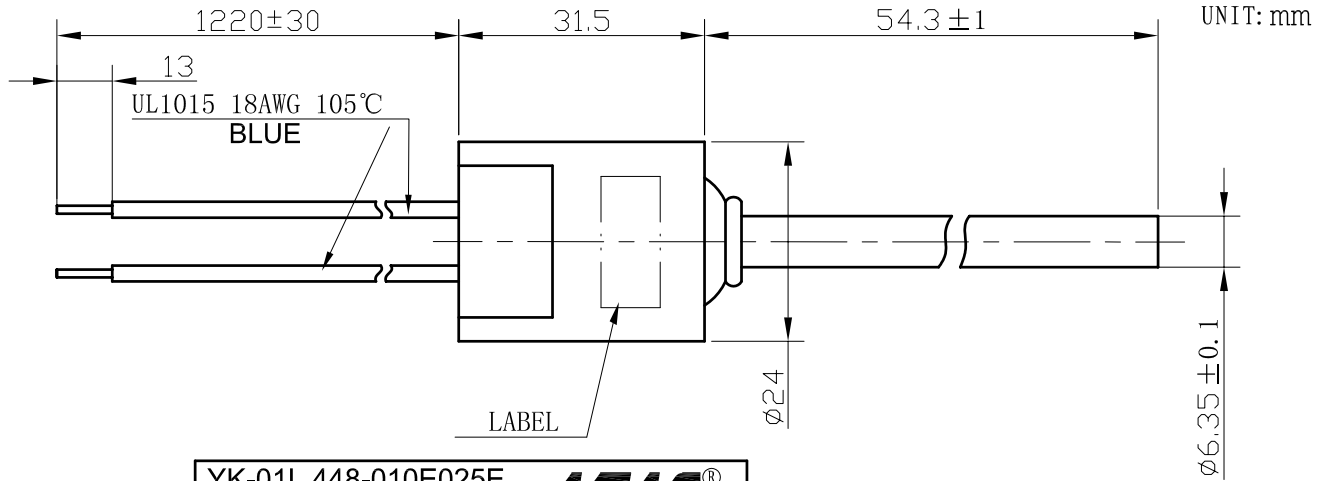
TECHNICAL SPECIFICATIONS

ACTUATION/OPEN PRESSURE	10 +/-5 PSI
RELEASE/CLOSE PRESSURE	25 +/-5 PSI
PROOF PRESSURE	250 PSI
BURST PRESSURE	3500 PSI
TEMPERATURE RANGE	Ambient: -30°C to +80°C Fluid: -50°C to +120°C
ELECTRICAL RATING	250Vac 1 ~ 6A
INSULATION RESISTANCE	DC500V, LARGER THAN 100MΩ
CONTACT RESISTANCE BETWEEN TERMINALS	LESS THAN 50mΩ
DIELECTRIC STRENGTH	750 VRMS open switch 1550 VRMS terminals to fitting
UL RECOGNIZED	FILE SA13309, CCN SDFY8
CE RECOGNIZED	40000571
LIFE AT RATED LOAD	100,000 Cycles
SWITCH CONFIGURATION	SPST, at atmospheric pressure: OPEN

Changzhou Match-well Electrical Products Co., ltd.	CUSTOMER NAME:
	CUSTOMER P/N: PS-LP10-25 SOLD MW
	Match-well P/N: YK-01L 448-010E025E
DRAWING DATE: December 9th, 2009	Pressure Controls

RoHS Compliant

REVISION: 02



YK-01L 448-010E025E
 OPEN: 10 ± 5 PSI
 CLOSE: 25 ± 5 PSI
 XXXXXX 250V 6A




DATE CODE

Please use the cooling device, which protects the main part of controller from damaging for the high temperature, as welding.

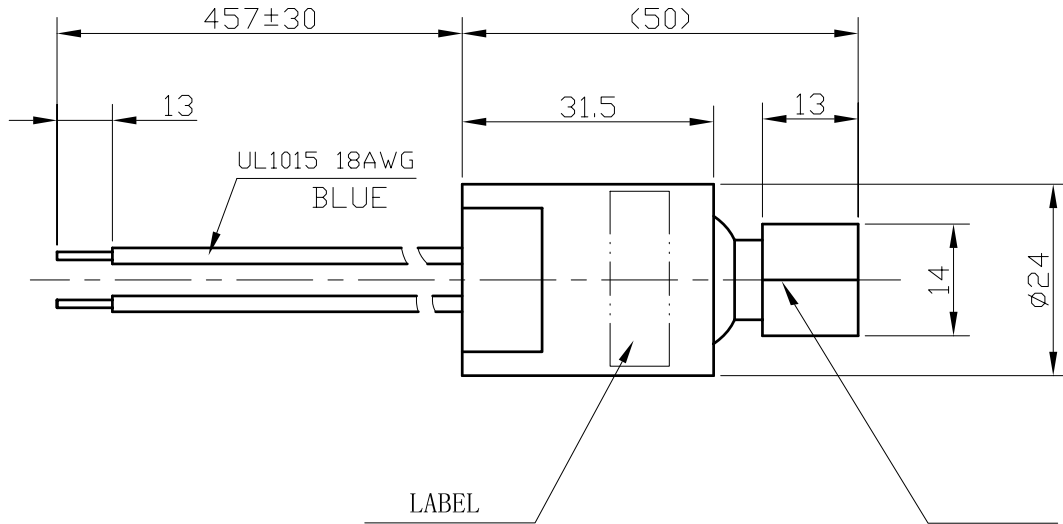
TECHNICAL SPECIFICATIONS

ACTUATION/OPEN PRESSURE	10 +/-5 PSI
RELEASE/CLOSE PRESSURE	25 +/-5 PSI
PROOF PRESSURE	250 PSI
BURST PRESSURE	3500 PSI
TEMPERATURE RANGE	Ambient: -30°C to +80°C Fluid: -50°C to +120°C
ELECTRICAL RATING	250Vac 1 ~ 6A
INSULATION RESISTANCE	DC500V, LARGER THAN 100MΩ
CONTACT RESISTANCE BETWEEN TERMINALS	LESS THAN 50mΩ
DIELECTRIC STRENGTH	750 VRMS open switch 1550 VRMS terminals to fitting
UL RECOGNIZED	FILE SA13309, CCN SDFY8
CE RECOGNIZED	40000571
LIFE AT RATED LOAD	100,000 Cycles
SWITCH CONFIGURATION	SPST, at atmospheric pressure: OPEN

Changzhou Match-well Electrical Products Co., ltd.	CUSTOMER NAME:
	CUSTOMER P/N: PS-LP10-25 SOLD MW
	Match-well P/N: YK-01L 448-010E025E
DRAWING DATE: December 9th, 2009	Pressure Controls

REVISION: 01

UNIT: mm




YK-03L
018-025E050E

 DATE CODE

RU **DE** **CE**
PRESSURE CONTROLLER
 OPEN: 25 ± 5 PSI
 CLOSE: 50 ± 5 PSI

1/4" Female Flare Fitting
W/core depressor

TECHNICAL SPECIFICATIONS

ACTUATION/OPEN PRESSURE	25 +/-5 PSI												
RELEASE/CLOSE PRESSURE	50 +/-5 PSI												
PROOF PRESSURE	250 PSI												
BURST PRESSURE	3500 PSI												
TEMPERATURE RANGE	Ambient: -30°C to +80°C Fluid: -50°C to +120°C												
ELECTRICAL RATING	50/60Hz, 36VDC, 3A												
	<table border="0"> <tr> <td>Voltage</td> <td>Amperage</td> <td></td> </tr> <tr> <td>24</td> <td>125VA</td> <td>pilot duty</td> </tr> <tr> <td>120</td> <td>375VA</td> <td>pilot duty</td> </tr> <tr> <td>240</td> <td>375VA</td> <td>pilot duty</td> </tr> </table>	Voltage	Amperage		24	125VA	pilot duty	120	375VA	pilot duty	240	375VA	pilot duty
Voltage	Amperage												
24	125VA	pilot duty											
120	375VA	pilot duty											
240	375VA	pilot duty											
LIFE AT RATED LOAD	100,000 Cycles												
DIELECTRIC STRENGTH	750 VRMS open switch 1550 VRMS terminals to fitting												
SWITCH CONFIGURATION	SPST, at atmospheric pressure: OPEN												


 CHANGZHOU CHANGHENG ASIA-PACIFIC AND ELECTRIC APPLIANCE CO., LTD.

CUSTOMER P/N:

CUSTOMER P/N: **PS-LP25-50MW**

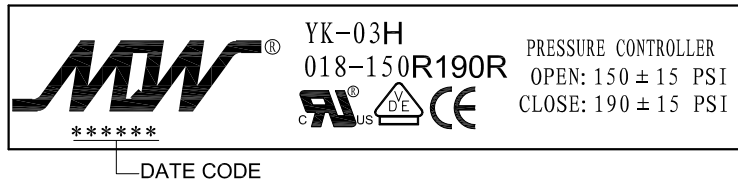
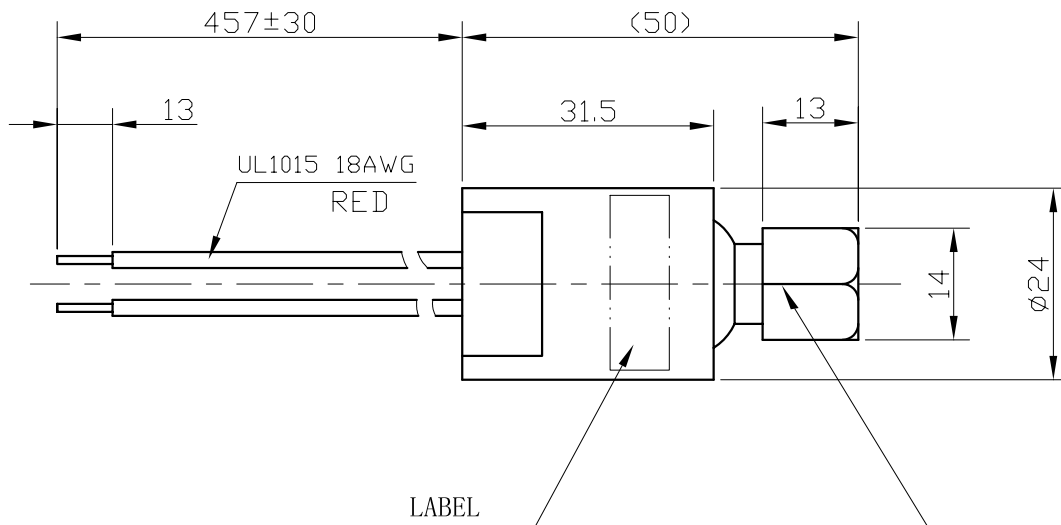
PRESSURE CONTROL DRAWING

MODEL - - - - - **YK-03L 018-025E050E**

RoHS Compliant

REVISION: 01

UNIT: mm



1/4" Female Flare Fitting
W/core depressor

TECHNICAL SPECIFICATIONS

ACTUATION/OPEN PRESSURE	150+/-15 PSI												
RELEASE/CLOSE PRESSURE	190+/-15 PSI												
PROOF PRESSURE	350 PSI												
BURST PRESSURE	2500 PSI												
TEMPERATURE RANGE	Ambient: -30°C to +80°C Fluid: -50°C to +120°C												
ELECTRICAL RATING	50/60Hz, 36VDC, 3A												
	<table border="0"> <tr> <td>Voltage</td> <td>Amperage</td> <td></td> </tr> <tr> <td>24</td> <td>125VA</td> <td>pilot duty</td> </tr> <tr> <td>120</td> <td>375VA</td> <td>pilot duty</td> </tr> <tr> <td>240</td> <td>375VA</td> <td>pilot duty</td> </tr> </table>	Voltage	Amperage		24	125VA	pilot duty	120	375VA	pilot duty	240	375VA	pilot duty
Voltage	Amperage												
24	125VA	pilot duty											
120	375VA	pilot duty											
240	375VA	pilot duty											
LIFE AT RATED LOAD	100,000 Cycles												
DIELECTRIC STRENGTH	750 VRMS open switch 1550 VRMS terminals to fitting												
SWITCH CONFIGURATION	SPST, at atmospheric pressure: OPEN												

Changzhou Match-well Electrical Products Co., Ltd.

CUSTOMER P/N:

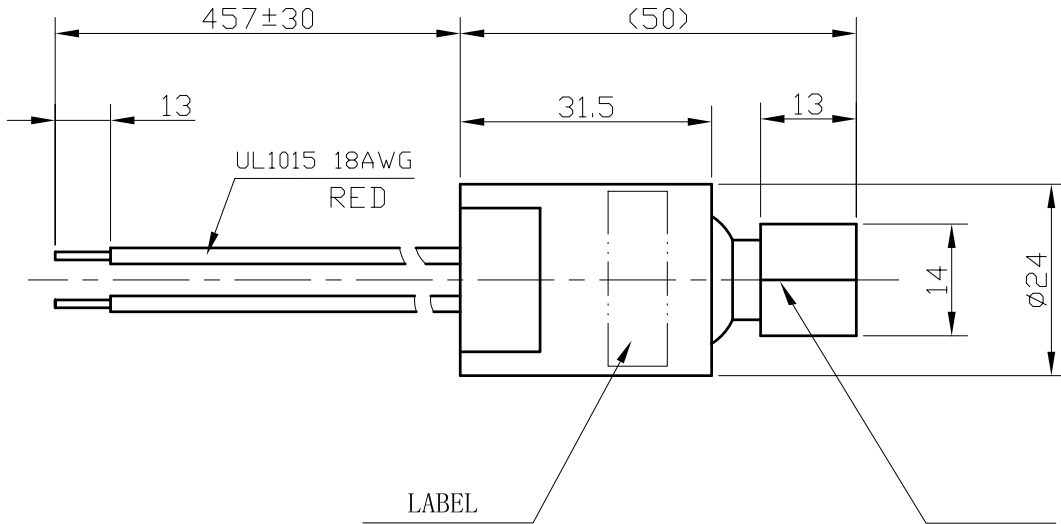
CUSTOMER P/N:

DRAWING DATE: June 20th, 2007

Match-well P/N: YK-03H 018-150R190R


REVISION: 01

UNIT: mm




YK-03H
018-190R250R

 DATE CODE

RU  

PRESSURE CONTROLLER
 OPEN: 190 ± 15 PSI
 CLOSE: 250 ± 15 PSI

1/4" Female Flare Fitting
W/core depressor

TECHNICAL SPECIFICATIONS

ACTUATION/OPEN PRESSURE	190 +/-15 PSI												
RELEASE/CLOSE PRESSURE	250 +/-15 PSI												
PROOF PRESSURE	600 PSI												
BURST PRESSURE	5000 PSI												
TEMPERATURE RANGE	Ambient: -30°C to +80°C Fluid: -50°C to +120°C												
ELECTRICAL RATING	50/60Hz, 36VDC, 3A												
	<table border="0"> <tr> <td>Voltage</td> <td>Amperage</td> <td></td> </tr> <tr> <td>24</td> <td>125VA</td> <td>pilot duty</td> </tr> <tr> <td>120</td> <td>375VA</td> <td>pilot duty</td> </tr> <tr> <td>240</td> <td>375VA</td> <td>pilot duty</td> </tr> </table>	Voltage	Amperage		24	125VA	pilot duty	120	375VA	pilot duty	240	375VA	pilot duty
Voltage	Amperage												
24	125VA	pilot duty											
120	375VA	pilot duty											
240	375VA	pilot duty											
LIFE AT RATED LOAD	100,000 Cycles												
DIELECTRIC STRENGTH	750 VRMS open switch 1550 VRMS terminals to fitting												
SWITCH CONFIGURATION	SPST, at atmospheric pressure: OPEN												


 CHANGZHOU CHANGHENG ASIA-PACIFIC AND ELECTRIC APPLIANCE CO., LTD.

CUSTOMER P/N:

CUSTOMER P/N: **PS-LP190-250MW**

PRESSURE CONTROL DRAWING

MODEL - - - - - **YK-03H 018-190R250R**