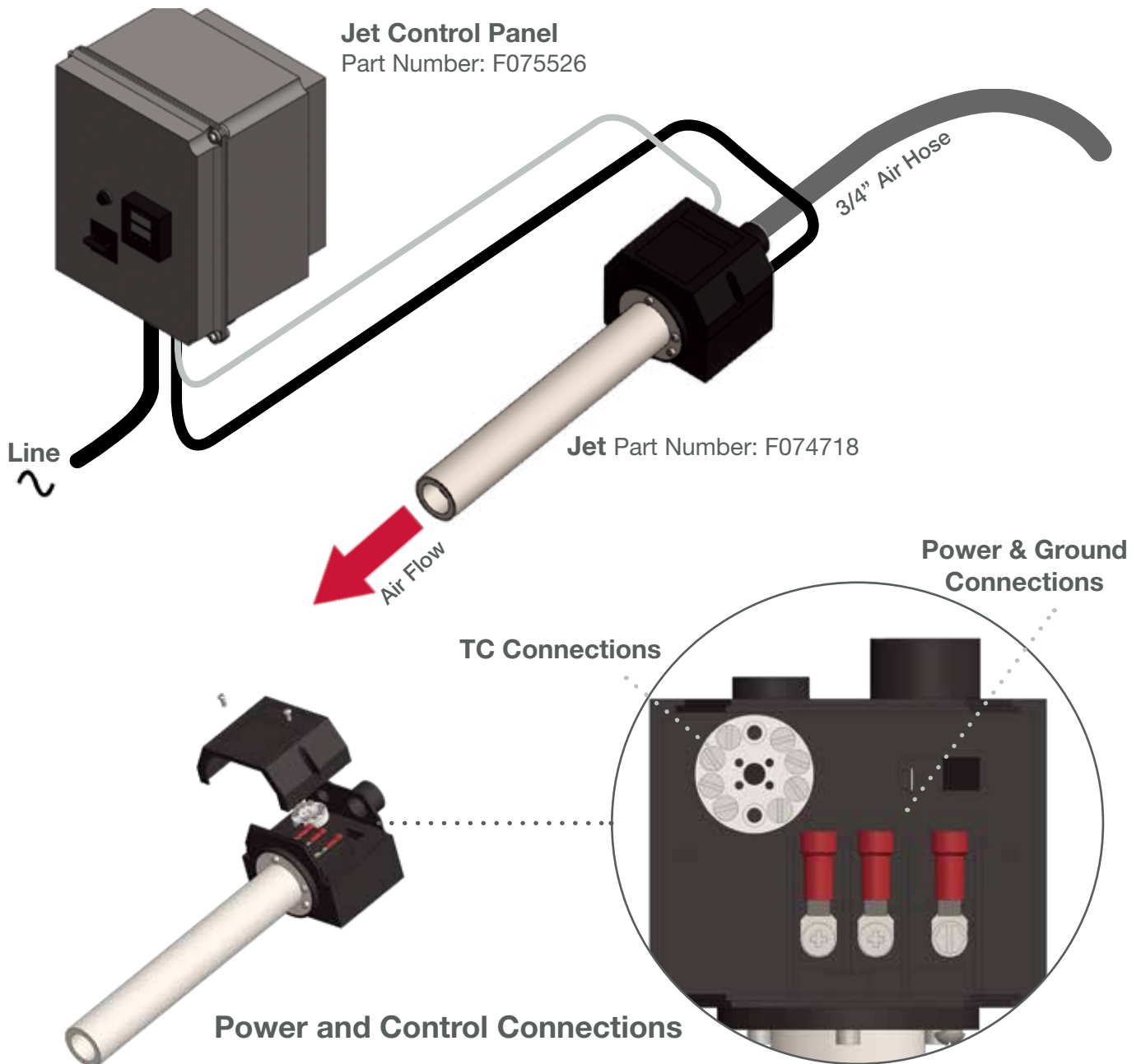


# Jet Air Heater

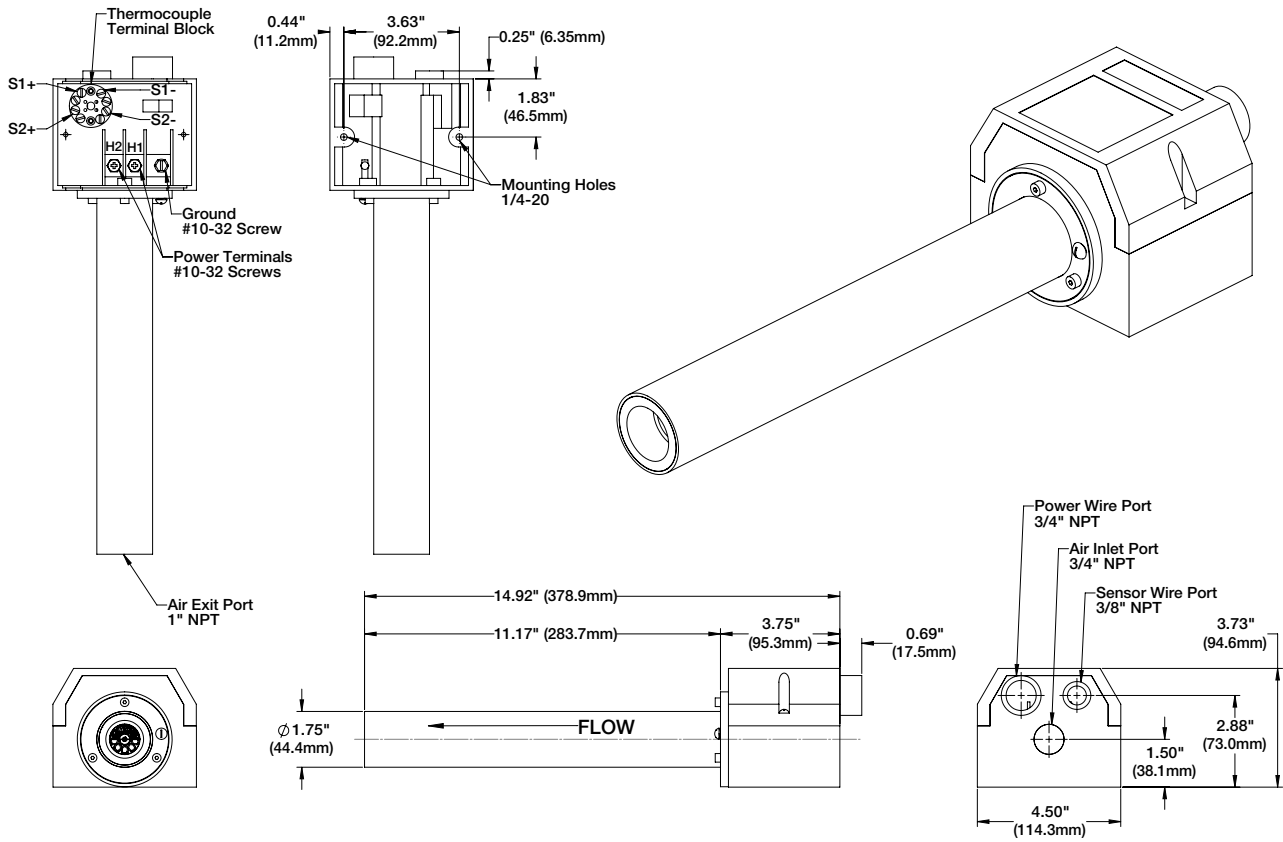
## General Description

The JET provides a compact and efficient heater solution for air temperatures up to 1400°F (760°C). Available in a 3.0kW or 8.0kW, 240V 1Ø unit, the Jet offers two type “K” thermocouples with a convenient terminal block for easy wiring. To ensure safety, power and perfect control, connect with the optional Jet Control Panel. Each heater has a convenient method for mounting the housing and offers a ground stud located at the inlet of the heater.

## Closed-Loop Connection Diagram



# Dimensions / Installation Reference



## Jet Products

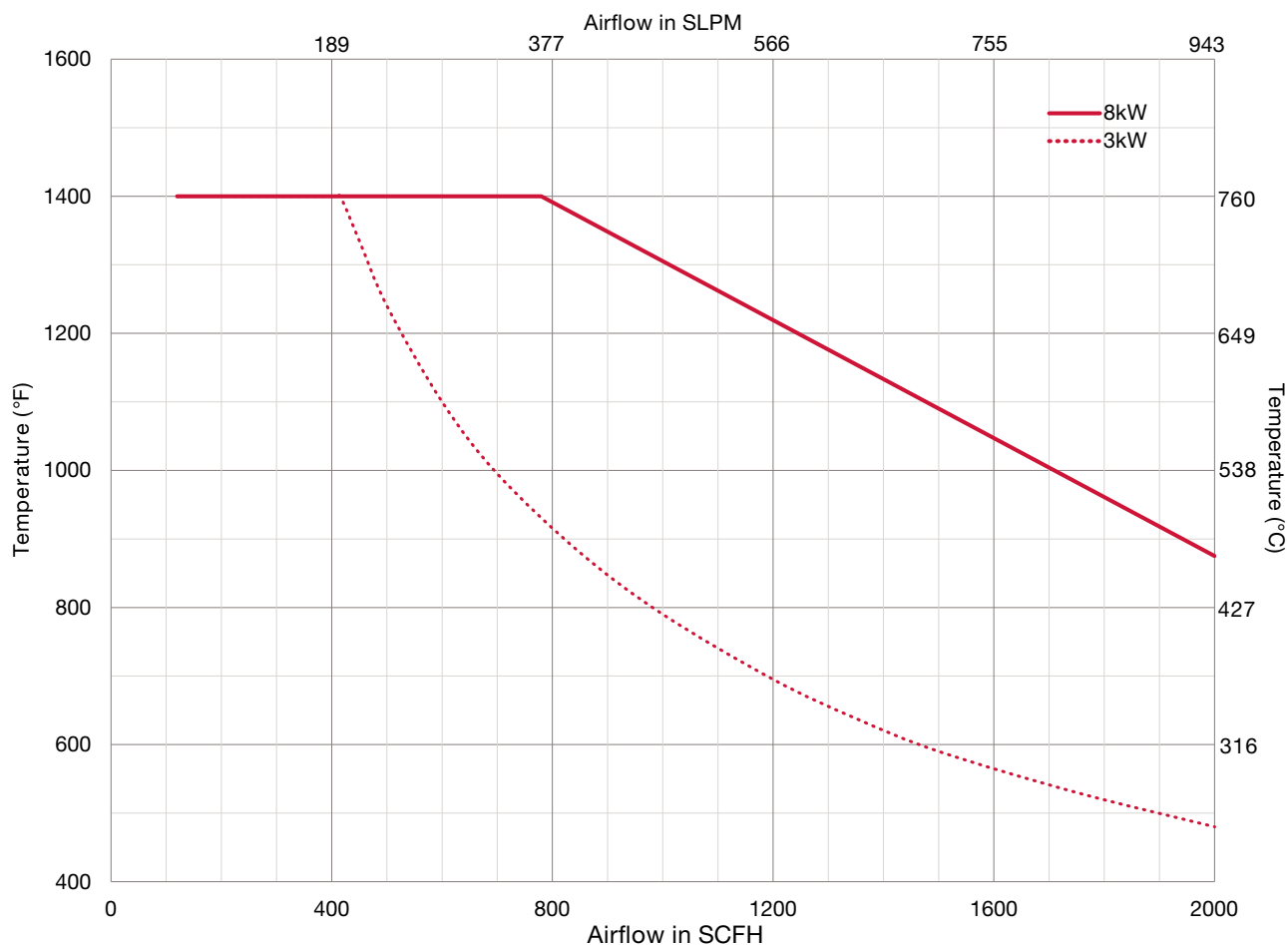
Part Number	Power kW	Max. Volts / ø	Max. Amps
F074718	3.0	240 / 1	12.5
F074719	8.0	240 / 1	33.3

## Jet Control Products

F075526	8.0	240 / 1	40
---------	-----	---------	----

# Jet Performance Curve

## Jet Maximum Performance



### Notes:

- Temperatures are measured by internal “K” T/C sensors located inside the Jet Housing
- Use of other sensor types and/or locations can result in heater damage
- Minimum airflow for accurate control is 2 SCFM
- Maximum air temperature is 1400°F (760°C)
- Operating above temperature voids the product warranty

