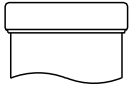
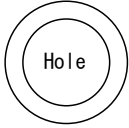
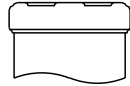
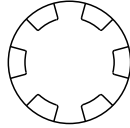


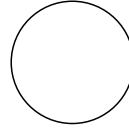
No. 0 Aluminum



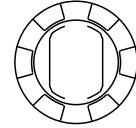
No. 1 Aluminum  
No. 2 Cu/Tin-plated  
No. 3 Stainless steel



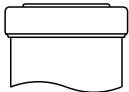
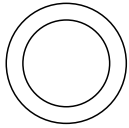
No. 4 Aluminum  
No. 5 Stainless steel  
No. D Cu/Tin-plated



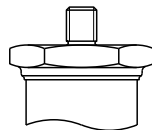
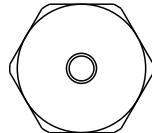
No. 7 Cu/Tin-plated



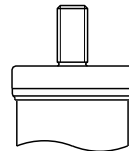
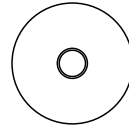
No. A Stainless steel



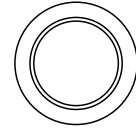
No. S Copper alloy



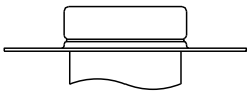
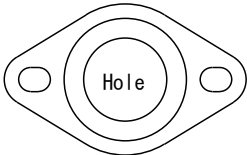
No. S Aluminum  
Copper alloy



No. T Aluminum  
No. U Cu/Ni-plated  
No. V Stainless steel

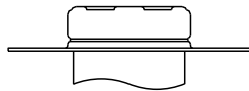
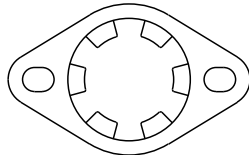


No. 0+5 Aluminum



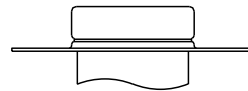
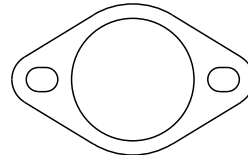
(Fixed: Cap&Bracket)

No. 1+5 Aluminum  
No. 2+5 Cu/Ni-plated  
No. 3+5 Stainless steel



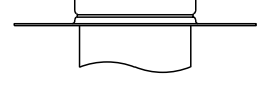
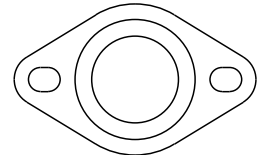
(Fixed: Cap&Bracket)

No. 5+5 Stainless steel



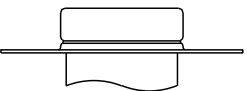
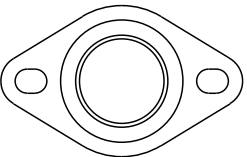
(Fixed: Cap&Bracket)

No. A+5 Stainless steel



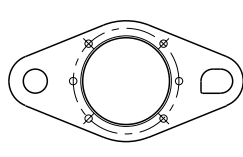
(Fixed: Cap&Bracket)

No. T+5 Aluminum  
No. C+5 Steel/Black coating  
No. U+5 Cu/Ni-plated  
No. V+5 Stainless steel



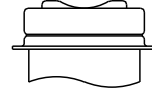
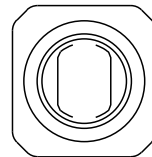
(Fixed: Cap&Bracket)

No. A+B Stainless steel  
No. Y+B Stainless steel  
No. A+D Stainless steel  
No. Y+D Stainless steel



(Fixed: Cap&Bracket)

No. R Stainless steel  
No. Z Cu/Tin-plated



Pipe mounting