

2025

AIR CONDITIONER



Intelligent cooling, artfully crafted

LG ARTCOOL™

AI AIR MIRROR

Why LG ARTCOOL™

Intelligent Comfort Redefined

Elevate your comfort effortlessly with AI-powered control. Throughout the year, our intelligent system seamlessly adjusts temperature, humidity, and airflow to offer optimal comfort every moment.



AI Comfort Control

AI Air

Revolutionize your comfort with intelligent adaptability. AI Air continuously optimizes airflow using radar sensors to track your location and the ThinQ app to understand your preferences.

Soft Air

Experience cooling like never before. Indirect airflow keeps you comfortable without direct contact, while personalized wind temperature settings ensure an ideal environment.

DUAL Vane

Stay cozy all year round. Cool air flows softly from above, and warm air rises gently from below, eliminating the discomfort of direct wind exposure.

Sleep Timer+

Enjoy deeper, smarter sleep. AI learns your sleep rhythm to create a tailored nighttime environment for uninterrupted rest.



Premium Artistic Design

A Design Inspired by Modern Art

Featuring a stunning black glass mirror finish, it serves as a design centerpiece, bringing sophistication and style to your space.

Black Mirror Glass Finish

The sleek black mirror glass finish brings modern elegance and sophistication to any space.

Minimal Layered-line Design

This minimalist vent is defined by an architectural array of lines that elevates the overall design and deliver soft, wide airflow.

Human Detecting Sensor

Save energy without lifting a finger. The system detects when a room is unoccupied and automatically switches to energy-saving mode after a set time.



Proactive Energy Saving & Hygienic Air Care

Effortless Savings

Live easy with the ThinQ application, helping to provide unparalleled comfort and energy efficiency. Control is always at your fingertips.

AI kW Manager by LG ThinQ

Manage energy usage and spending.

Window Open Detection

Save energy with automatic power-saving.

All Cleaning Mode

One tap for total cleaning.

Auto Clean+

Dries the inside automatically.

Pre-Filter

Traps big dust particles.

Freeze Cleaning

Ice washing cleaning.

Allergy Filter

Reduce allergens allergy.

Plasmaster™ Ionizer++

Remove 99.9% of adhering bacteria.

※ For our policy of continuous product improvement, specification, design and feature are subject to change without prior notice.

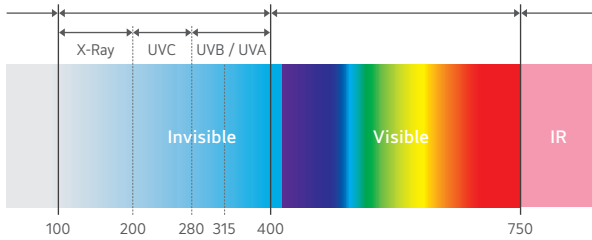
LG DUALCOOL, keeping the fan (inside the unit) 99.99% bacteria-free with ultraviolet light to ensure that the air passing through is clean too.

What Is UVnano™ and How It Works?

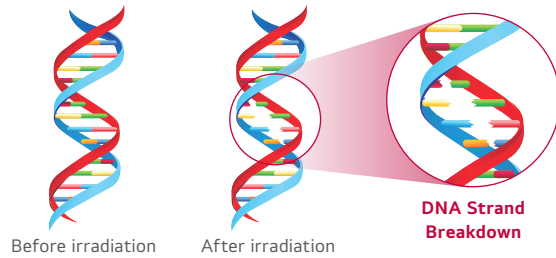
- Emit Ultraviolet rays of UVC wavelength directly damage the DNA of microorganisms (bacteria/mold/viruses) making it impossible for them to multiply.
- High absorption into DNA at 260 to 270 nm wavelengths

DNA Absorption Efficiency by Wavelength

Electromagnetic Spectrum and Types



Destruction Nuclear Sequence (Chain)



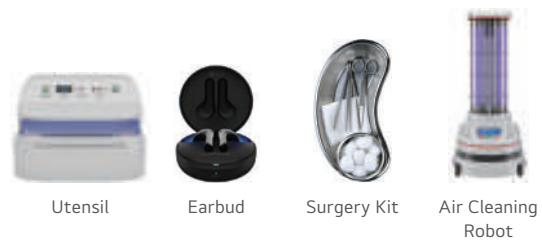
* Function fully available on Multi Split from 25.05 ~

UVC Applied Product

LG Product



Various Product Lines



Benefit & Verification

Keep the fan 99.99% bacteria-clean for a cleaner breeze.



Removes up to **99.99%** of bacteria from the internal fan.



- ※ Test Condition
 - Test Model : S3NM12JL1GA(SJ), S3NM24K21GA(SK)
 - Test Standard : LG test method with referenced to ISO 20743:2007
 - Bacteria : Staphylococcus aureus, Staphylococcus epidermidis, Klebsiella pneumoniae

※ UVnano is an integrated marketing name that applies LG Electronics' entire home appliances and it is a compound of the words UV (ultraviolet) and nanometer (unit of length).

※ For our policy of continuous product improvement, specification, design and feature are subject to change without prior notice.
 ※ Specifications may vary according to each units.

Auto Cleaning

The interior of the air conditioner is maintained clean by drying off the heat exchanger, then cleaning the interior once more.

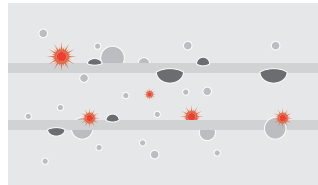
Pain Point

After the air conditioner operates in cooling mode, the inside of the air conditioner becomes humid, making it easier to smell and contaminate. Cleaning the inside of the air conditioner is especially difficult, and many customers are curious about how to maintain it.

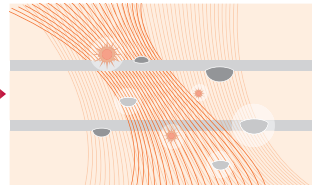


How It Works

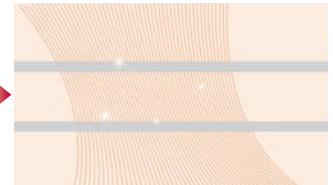
Dry-up Evaporator with proper air flow



Long exposure to humid conditions can lead to accumulation of pollutants inside the air conditioner, making it difficult to expect clean air the next time you turn it on.



The auto cleaning function helps remove moisture from the heat exchanger by operating the fan for a certain period after the cooling operation.



Benefit

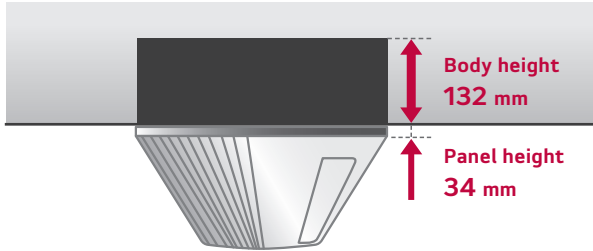
Keeps the evaporator clean for fresh wind pass through

Auto Cleaning function helps maintain the cleanliness of the heat exchanger by periodically drying the inside of the air conditioner, which is difficult to manage.

Compact Size of Indoor Unit

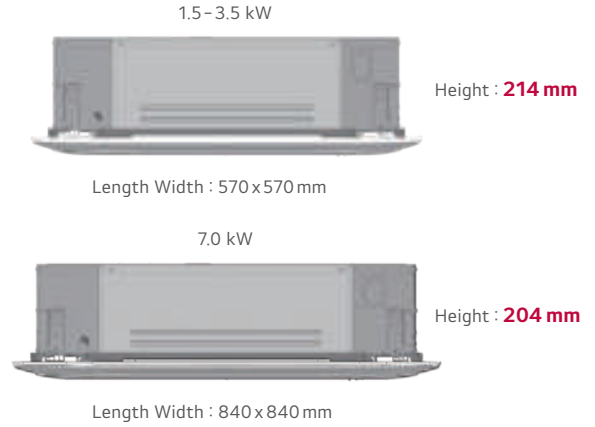
LG 1 Way Cassette

Slim & compact design not only saves space, but also reduces installation costs. **The height of 1 Way Cassette is 132 mm, making it the ideal solution for installation in limited space.**



LG 4 Way Cassette

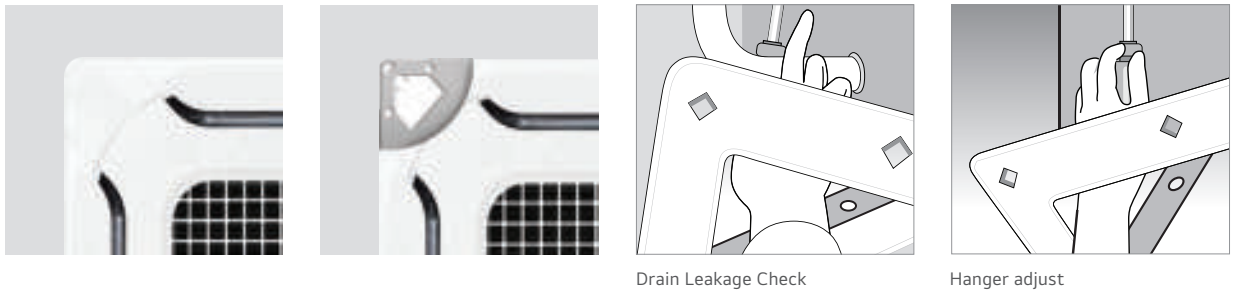
Slim & compact design not only saves space, but also improves workability. It's designed to suit most of building designs and fit into various spaces.



Convenient Panel Installation

The detachable corner design makes it easy to adjust the hanger during installation and to check for leakages in the drain connection pipe. And it is easy to install the panel to the body, using the button type panel design.

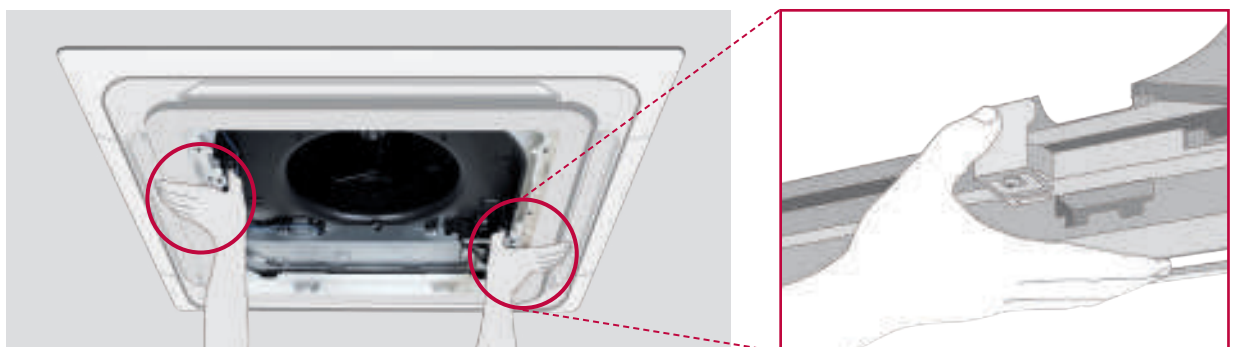
Detachable Corner Design



Drain Leakage Check

Hanger adjust

One Push Panel



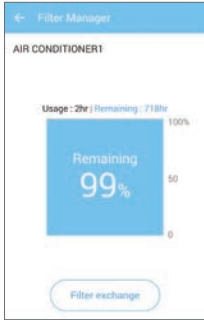
※ For our policy of continuous product improvement, specification, design and feature are subject to change without prior notice.
 ※ Specifications may vary according to each units.

Filter Maintenance & Sign

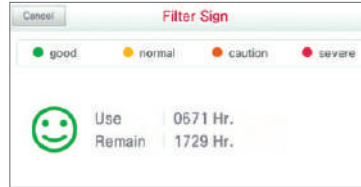
1 Way Cassette notifies the user of the time of cleaning not only by the remote controller or mobile application, but also by the LED display on the cassette. It makes the filter management easy and the indoor environment can be kept clean.

Filter Sign

Mobile Application*



Wired Remote Controller



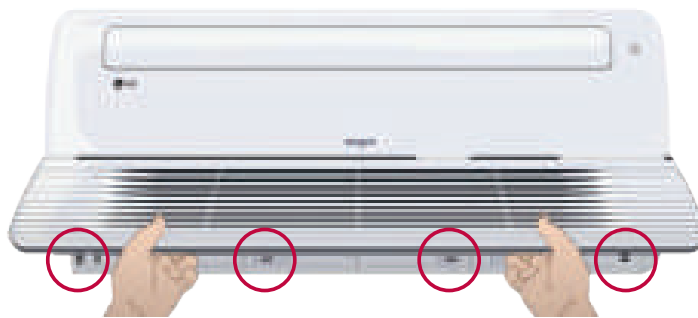
Indicator Color



DESCRIPTION	LAMP COLOR
Cooling mode	Green
Heating mode	Green
Time to clean filter in cooling/heating Mode	Yellowish Green
Time to clean filter when product is not operating	Orange
Hot start or defrost mode before starting heating mode	Green
When reservation set on	Yellowish Green

One Touch Magnetic

The 1 Way cassette is easily maintained when filter change or cleaning by one touch magnetic are needed.



※ For our policy of continuous product improvement, specification, design and feature are subject to change without prior notice.
 ※ Specifications may vary according to each units.

Convenient Remote Controller for Ceiling Mounted Cassette and Ceiling Concealed Duct

Standard III remote controller offers 4.3 inch LCD screen with luxurious design which well-matches interior design through simple button layout.



Standard III Remote Controller

Humidity Display

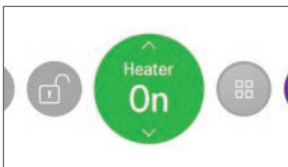


Multi Language Support

English, French, German, Spanish, Italian Portuguese, Polish, Czech, Russian, Chinese

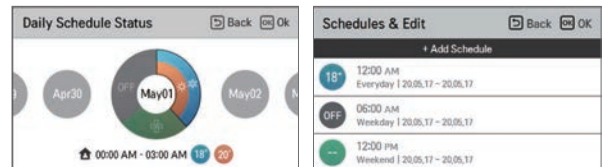
External Equipment Control

A user can turn on or off the external equipment through 1 Digital Output port



Optimized Schedule

Easy scheduling from daily to yearly



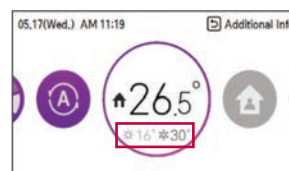
User Friendly Design

Intuitive GUI design using circle theme



2 Set Point

Room temperature is decided by setting 2 set point for cooling and heating



for Cooling



for Heating



Note : Some function may not work in some products

※ For our policy of continuous product improvement, specification, design and feature are subject to change without prior notice.
 ※ Specifications may vary according to each units.



LG participates in the ECP programme for EUROVENT AC program. Check ongoing validity of certification : www.eurovent-certification.com

OUTDOOR UNITS				MU2R15.U13	MU2R17.U13
Compressor	Type			Twin Rotary	Twin Rotary
Capacity**	Cooling	Min. / Nom. / Max.	kW	0.9 / 4.1 / 4.7	0.9 / 4.7 / 5.4
	Heating	Min. / Nom. / Max.	kW	1.0 / 4.7 / 5.4	1.0 / 5.1 / 5.5
Low Temperature Capacity	Heating -7°C	Max.	kW	3.7	4.0
Power Input**	Cooling	Min. / Nom. / Max.	kW	0.2 / 1.0 / 1.4	0.2 / 1.2 / 1.8
	Heating	Min. / Nom. / Max.	kW	0.2 / 1.1 / 1.5	0.2 / 1.2 / 1.5
Running Current	Cooling	Min. / Nom. / Max.	A	1.0 / 4.4 / 6.2	1.0 / 5.4 / 8.0
	Heating	Min. / Nom. / Max.	A	1.1 / 4.7 / 6.5	1.1 / 5.3 / 6.7
EER				4.10	3.84
COP				4.40	4.25
SEER				8.60	8.50
SCOP				4.61	4.61
Pdesign (@-10°C)	kW			3.60	3.60
Seasonal Energy Label	Cooling / Heating (A+++ to D Scale)			A+++ / A++	A+++ / A++
Annual Energy Consumption	Cooling / Heating			167 / 1,095	193 / 1,095
Airflow Rate	Nom.		m ³ /min	35	35
Sound Pressure*	Cooling	Nom.	dB(A)	45	46
	Heating	Nom.	dB(A)	48	49
Sound Power	Cooling	Max.	dB(A)	60	61
Dimensions	W x H x D		mm	770 x 545 x 288	770 x 545 x 288
Net Weight				32.5	32.5
Refrigerant	Type			R32	R32
	Charge	Kg		1.04	1.04
	Additional Charge	g/m		-	-
	GWP			675	675
	t-CO ₂ eq			0.702	0.702
Operation Range (Outdoor)	Cooling	Min. / Max.	°C DB	-10 / 48	-10 / 48
	Heating	Min. / Max.	°C WB	-15 / 18	-15 / 18
Power Supply	Ø / V / Hz			1 / 220-240 / 50	1 / 220-240 / 50
Power Supply Cable	No. x mm ²			3C x 2.5	3C x 2.5
Transmission Cable	No. x mm ²			4C x 0.75	4C x 0.75
Circuit Breaker	A			13	13
Piping Length Total	m			30	30
Piping Length per Branch		Max.	m	20	20
Piping Elevation Difference	IDU - ODU	Max.	m	15	15
	IDU - IDU	Max.	m	7.5	7.5
Piping Connection	Liquid	mm (inch) x No.		Ø6.35 (1/4) x 2	Ø6.35 (1/4) x 2
	Gas	mm (inch) x No.		Ø9.52 (3/8) x 2	Ø9.52 (3/8) x 2

* Sound Pressure is not a value declared on Eurovent Program.

Notes :

1. Capacities are based on the following conditions:

Cooling : - Indoor Temperature 27°C (80.6°F) DB / 19°C (66.2°F) WB - Outdoor Temperature 35°C (95°F) DB / 24°C (75.2°F) WB

Heating : - Indoor Temperature 20°C (68°F) DB / 15°C (59°F) WB - Outdoor Temperature 7°C (44.6°F) DB / 6°C (42.8°F) WB

Piping Length - Interconnecting Piping Length 7.5m - Level Difference of Zero.

2. **: See page "Combination Table".

3. Due to our policy of innovation some specifications may be changed without notification.

4. At least two indoor units should be connected

5. Minimum combination ratio should be more than 40%.

6. This product contains fluorinated greenhouse gases (R32)

※ For our policy of continuous product improvement, specification, design and feature are subject to change without prior notice.

MU3R19.U23 / MU3R21.U23

MU4R25.U22



LG participates in the ECP programme for EUROVENT AC program. Check ongoing validity of certification : www.eurovent-certification.com

* This authentication applies only to 18k, 21k.

OUTDOOR UNITS				MU3R19.U23	MU3R21.U23	MU4R25.U22
Compressor	Type			Twin Rotary	Twin Rotary	Twin Rotary
Capacity**	Cooling	Min. / Nom. / Max.	kW	1.1 / 5.3 / 6.3	1.1 / 6.2 / 7.3	1.1 / 7.0 / 8.5
	Heating	Min. / Nom. / Max.	kW	1.2 / 6.3 / 7.3	1.2 / 7.0 / 7.8	1.2 / 8.1 / 9.1
Low Temperature Capacity	Heating -7°C	Max.	kW	5.2	5.6	5.9
Power Input**	Cooling	Min. / Nom. / Max.	kW	0.3 / 1.2 / 1.8	0.3 / 1.5 / 2.4	0.3 / 1.8 / 2.8
	Heating	Min. / Nom. / Max.	kW	0.3 / 1.3 / 1.9	0.3 / 1.6 / 2.2	0.3 / 1.8 / 2.9
Running Current	Cooling	Min. / Nom. / Max.	A	1.3 / 5.3 / 8.1	1.3 / 6.6 / 10.7	1.3 / 8.0 / 12.6
	Heating	Min. / Nom. / Max.	A	1.2 / 5.9 / 8.6	1.2 / 6.9 / 9.8	1.3 / 8.3 / 12.9
EER				4.43	4.15	4.00
COP				4.80	4.51	4.40
SEER				8.60	8.50	8.00
SCOP				4.65	4.65	4.40
Pdesign (@-10°C)			kW	5.00	5.00	5.40
Seasonal Energy Label	Cooling / Heating (A+++ to D Scale)			A+++ / A++	A+++ / A++	A++ / A+
Annual Energy Consumption	Cooling / Heating			215 / 1,505	253 / 1,505	308 / 1,718
Airflow Rate	Nom.		m ³ /min	50	50	50
Sound Pressure*	Cooling	Nom.	dB(A)	47	48	49
	Heating	Nom.	dB(A)	50	51	53
Sound Power	Cooling	Max.	dB(A)	61	62	64
Dimensions	W x H x D		mm	870 x 650 x 330	870 x 650 x 330	870 x 650 x 330
Net Weight			Kg	44.5	44.5	47.0
Refrigerant	Type			R32	R32	R32
	Charge		Kg	1.40	1.40	1.4
	Additional Charge		g/m	20	20	20
	GWP			675	675	675
	t-CO ₂ eq			0.945	0.945	0.945
Operation Range (Outdoor)	Cooling	Min. / Max.	°C DB	-10 / 48	-10 / 48	-10 / 48
	Heating	Min. / Max.	°C WB	-15 / 18	-15 / 18	-18 / 18
Power Supply			Ø / V / Hz	1 / 220-240 / 50	1 / 220-240 / 50	1 / 220-240 / 50
Power Supply Cable			No. x mm ²	3C x 2.5	3C x 2.5	3C x 2.5
Transmission Cable			No. x mm ²	4C x 0.75	4C x 0.75	4C x 0.75
Circuit Breaker			A	16	16	20
Piping Length Total			m	50	50	70
Piping Length per Branch		Max.	m	25	25	25
Piping Elevation Difference	IDU - ODU	Max.	m	15	15	15
	IDU - IDU	Max.	m	7.5	7.5	7.5
Piping Connection	Liquid		mm (inch) x No.	Ø6.35 (1/4) x 3	Ø6.35 (1/4) x 3	Ø6.35 (1/4) x 4
	Gas		mm (inch) x No.	Ø9.52 (3/8) x 3	Ø9.52 (3/8) x 3	Ø9.52 (3/8) x 4

* Sound Pressure is not a value declared on Eurovent Program.

Notes :

1. Capacities are based on the following conditions:

Cooling : - Indoor Temperature 27°C (80.6°F) DB / 19°C (66.2°F) WB - Outdoor Temperature 35°C (95°F) DB / 24°C (75.2°F) WB

Heating : - Indoor Temperature 20°C (68°F) DB / 15°C (59°F) WB - Outdoor Temperature 7°C (44.6°F) DB / 6°C (42.8°F) WB

Piping Length - Interconnecting Piping Length 7.5m - Level Difference of Zero.

2. ** : See page "Combination Table".

3. Due to our policy of innovation some specifications may be changed without notification.

4. At least two indoor units should be connected

5. Minimum combination ratio should be more than 40%.

6. This product contains fluorinated greenhouse gases (R32)

※ For our policy of continuous product improvement, specification, design and feature are subject to change without prior notice.



LG participates in the ECP programme for EUROVENT AC program. Check ongoing validity of certification : www.eurovent-certification.com

* This authentication applies only to 30k, 40k.

OUTDOOR UNITS				MU4R27.U42	MU5R30.U42	MU5R40.U42
Compressor	Type			Twin Rotary	Twin Rotary	Scroll
Capacity**	Cooling	Min. / Nom. / Max.	kW	1.3 / 7.9 / 9.5	1.3 / 8.8 / 10.6	1.3 / 11.2 / 14.7
	Heating	Min. / Nom. / Max.	kW	1.5 / 9.1 / 10.6	1.5 / 10.1 / 12.1	1.5 / 12.5 / 16.0
Low Temperature Capacity	Heating -7°C	Max.	kW	6.4	7.1	11.0
Power Input**	Cooling	Min. / Nom. / Max.	kW	0.4 / 1.8 / 2.9	0.4 / 2.0 / 3.4	0.4 / 3.3 / 5.3
	Heating	Min. / Nom. / Max.	kW	0.6 / 2.1 / 3.4	0.6 / 2.2 / 3.6	0.4 / 3.1 / 5.3
Running Current	Cooling	Min. / Nom. / Max.	A	1.9 / 8.1 / 13.1	1.9 / 9.1 / 15.2	1.8 / 14.4 / 23.9
	Heating	Min. / Nom. / Max.	A	2.8 / 9.4 / 15.3	2.8 / 9.7 / 16.3	1.8 / 16.5 / 24.2
EER				4.39	4.40	3.50
COP				4.39	4.70	4.10
SEER				8.00	8.20	7.50
SCOP				4.30	4.30	4.40
Pdesign (@-10°C)			kW	7.00	7.40	9.10
Seasonal Energy Label	Cooling / Heating (A+++ to D Scale)			A++ / A+	A++ / A+	A++ / A+
Annual Energy Consumption	Cooling / Heating			346 / 2,214	376 / 2,344	523 / 2,896
Airflow Rate	Nom.		m ³ /min	60	60	80
Sound Pressure*	Cooling	Nom.	dB(A)	48	49	52
	Heating	Nom.	dB(A)	52	53	54
Sound Power	Cooling	Max.	dB(A)	64	64	64
Dimensions	W x H x D		mm	950 x 834 x 330	950 x 834 x 330	950 x 834 x 330
Net Weight			Kg	63.5	64.1	74.0
Refrigerant	Type			R32	R32	R32
	Charge		Kg	2.3	2.6	2.8
	Additional Charge		g/m	20	20	20
	GWP			675	675	675
	t-CO ₂ eq			1.553	1.755	1.890
Operation Range (Outdoor)	Cooling	Min. / Max.	°C DB	-10 / 48	-10 / 48	-10 / 48
	Heating	Min. / Max.	°C WB	-18 / 18	-18 / 18	-18 / 18
Power Supply			Ø / V / Hz	1 / 220-240 / 50	1 / 220-240 / 50	1 / 220-240 / 50
Power Supply Cable			No. x mm ²	3C x 2.5	3C x 2.5	3C x 2.5
Transmission Cable			No. x mm ²	4C x 0.75	4C x 0.75	4C x 0.75
Circuit Breaker			A	25	25	40
Piping Length Total			m	70	75	85
Piping Length per Branch		Max.	m	25	25	25
Piping Elevation Difference	IDU - ODU	Max.	m	15	15	15
	IDU - IDU	Max.	m	7.5	7.5	7.5
Piping Connection	Liquid		mm (inch) x No.	Ø6.35 (1/4) x 4	Ø6.35 (1/4) x 5	Ø6.35 (1/4) x 5
	Gas		mm (inch) x No.	Ø9.52 (3/8) x 4	Ø9.52 (3/8) x 5	Ø9.52 (3/8) x 5

* Sound Pressure is not a value declared on Eurovent Program.

Notes :

1. Capacities are based on the following conditions:

Cooling : - Indoor Temperature 27°C (80.6°F) DB / 19°C (66.2°F) WB - Outdoor Temperature 35°C (95°F) DB / 24°C (75.2°F) WB

Heating : - Indoor Temperature 20°C (68°F) DB / 15°C (59°F) WB - Outdoor Temperature 7°C (44.6°F) DB / 6°C (42.8°F) WB

Piping Length - Interconnecting Piping Length 7.5m - Level Difference of Zero.

2. **: See page "Combination Table".

3. Due to our policy of innovation some specifications may be changed without notification.

4. At least two indoor units should be connected

5. Minimum combination ratio should be more than 40%.

6. This product contains fluorinated greenhouse gases (R32)

※ For our policy of continuous product improvement, specification, design and feature are subject to change without prior notice.



LG participates in the ECP programme for EUROVENT AC program. Check ongoing validity of certification : www.eurovent-certification.com

Masterpiece of Your Interior: ARTCOOL Gallery Premium

- Transform your space with the perfect blend of functionality and art. The ARTCOOL 2nd Evolution Gallery seamlessly integrates style, technology, and comfort into your home.
- Stylish Design: A wood frame with an interior design aesthetic (optional black frame) elevates any room's décor.
 - FHD Display: A 27-inch full HD display graces the front panel, offering dynamic customization.
 - Personal Touch: Easily upload and change images or showcase your own photos via the LG ThinQ app, making it uniquely yours.
 - Entertainment Hub: Enjoy videos and music with built-in 5W speakers (2 EA) for a richer experience.
 - Smart Display: The air conditioner widget keeps you informed about energy usage, maintenance needs, and operational status at a glance.
 - Smartphone Integration: Mirror your Android smartphone to the ARTCOOL Gallery for a larger display (Android OS only*).
 - Comfort & Hygiene
 - 3D Indirect Airflow & Hidden Vane Control: Provides optimal cooling without the discomfort of direct wind.
 - Plasmaster™ Ionizer++: Removes 99.9% of adhering bacteria for cleaner air.
 - Auto Clean+: Ensures the unit stays spotless with innovative cleaning modes.

With the ARTCOOL 2nd Evolution Gallery, you're not just getting an air conditioner-you're elevating your interior with a masterpiece of design and technology.

Multi Combination

INDOOR				A09GA2.NSE
Capacity	Cooling	Rated	W	2,600
	Heating	Rated	W	3,300
Sound Pressure*	Cooling	S / L / M / H		20 / 28 / 36 / 42
	Heating	L / M / H		28 / 36 / 42
Sound Power	Cooling	Power	dB(A)	60
Air Flow Rate	Cooling	S / L / M / H	m ³ /min	3 / 6 / 8 / 10
		Max. (Power)	m ³ /min	12
	Heating	L / M / H	m ³ /min	6 / 8 / 10
Dehumidification Rate				l/h
Power Supply				Ø / V / Hz
Power Supply Cable				N x mm ²
Dimension				mm
Net Weight				kg
ACCESSORIES & OTHERS				A09GA2.NSE
Wall Type Single Split Compatible				Y
Commercial Single Split Compatible				-
Dry Contact				Y
Wired Remote Controller				Y
ThinQ (Embedded Wi-Fi)				Y

INDOOR				A12GA2.NSE
Capacity	Cooling	Rated	W	3,700
	Heating	Rated	W	4,000
Sound Pressure*	Cooling	S / L / M / H		20 / 28 / 36 / 42
	Heating	L / M / H		28 / 36 / 42
Sound Power	Cooling	Power	dB(A)	60
Air Flow Rate	Cooling	S / L / M / H	m ³ /min	3 / 6 / 8 / 10
		Max. (Power)	m ³ /min	12
	Heating	L / M / H	m ³ /min	6 / 8 / 10
Dehumidification Rate				l/h
Power Supply				Ø / V / Hz
Power Supply Cable				N x mm ²
Dimension				mm
Net Weight				kg
ACCESSORIES & OTHERS				A12GA2.NSE
Wall Type Single Split Compatible				Y
Commercial Single Split Compatible				-
Dry Contact				Y
Wired Remote Controller				Y
ThinQ (Embedded Wi-Fi)				Y

* : Sound Pressure is not a value declared on Eurovent Program.
 ※ This product contains Fluorinated greenhouse gases (R32).
 ※ S : Sleep / L : Low / M : Medium / H : High
 ※ GWP : Global warming potential
 ※ t-CO₂eq : F-gas(kg)*GWP/1000
 ※ Y : Available or Applied / - : Not Available or Not Applied
 ※ For our policy of continuous product improvement, specification, design and feature are subject to change without prior notice.



Designed Air Conditioner to Fit Perfectly into Anywhere

- ARTCOOL 2nd Evolution ARTCOOL GALLERY SPECIAL to seamlessly integrate with your senses and interior
- Wood frame, Interior design style (Black frame is option)
- Easily change images and display your own style
- Air Flow: 3D Indirect Air Flow, Hidden Vane Control, Plasmaster™ Ionizer++
- Auto Clean+



DUAL
Inverter™



LG participates in the ECP programme for EUROVENT AC program. Check ongoing validity of certification : www.eurovent-certification.com

Multi Combination

INDOOR				A09GA1.NSE
Capacity	Cooling	Rated	W	2,600
	Heating	Rated	W	3,300
Sound Pressure*	Cooling	S / L / M / H		20 / 28 / 36 / 42
	Heating	L / M / H		28 / 36 / 42
Sound Power	Cooling	Power	dB(A)	60
Air Flow Rate	Cooling	S / L / M / H	m ³ /min	3 / 6 / 8 / 10
		Max. (Power)	m ³ /min	12
	Heating	L / M / H	m ³ /min	6 / 8 / 10
Dehumidification Rate				l/h
Power Supply				Ø / V / Hz
Power Supply Cable				N x mm ²
Dimension				mm
Net Weight				kg
ACCESSORIES & OTHERS				A09GA1.NSE
Wall Type Single Split Compatible				Y
Commercial Single Split Compatible				-
Dry Contact				Y
Wired Remote Controller				Y
ThinQ (Embedded Wi-Fi)				Y

INDOOR				A12GA1.NSE
Capacity	Cooling	Rated	W	3,700
	Heating	Rated	W	4,000
Sound Pressure*	Cooling	S / L / M / H		20 / 28 / 36 / 42
	Heating	L / M / H		28 / 36 / 42
Sound Power	Cooling	Power	dB(A)	60
Air Flow Rate	Cooling	S / L / M / H	m ³ /min	3 / 6 / 8 / 10
		Max. (Power)	m ³ /min	12
	Heating	L / M / H	m ³ /min	6 / 8 / 10
Dehumidification Rate				l/h
Power Supply				Ø / V / Hz
Power Supply Cable				N x mm ²
Dimension				mm
Net Weight				kg
ACCESSORIES & OTHERS				A12GA1.NSE
Wall Type Single Split Compatible				Y
Commercial Single Split Compatible				-
Dry Contact				Y
Wired Remote Controller				Y
ThinQ (Embedded Wi-Fi)				Y

* : Sound Pressure is not a value declared on Eurovent Program.

※ This product contains Fluorinated greenhouse gases (R32).

※ S : Sleep / L : Low / M : Medium / H : High

※ GWP : Global warming potential

※ t-CO₂eq : F-gas(kg)*GWP/1000

※ Y : Available or Applied / - : Not Available or Not Applied

※ For our policy of continuous product improvement, specification, design and feature are subject to change without prior notice.



LG participates in the ECP programme for EUROVENT AC program.
Check ongoing validity of certification : www.eurovent-certification.com

AI-Advanced Care with Your Interior and Lower Energy Consumption

- AI AIR adapts airflow with radar sensors for optimal comfort.
- Soft Air and Dual Vane deliver gentle, tailored cooling.
- When Soft Air is activated, the airflow comes out in three directions. (Front, Right, Left)
- High SEER provides top performance with lower energy consumption.
- Proactive features like Human Detection and Window Open Detection reduce energy waste.
- Plasmaster™ Ionizer++, and Allergy Filter ensure hygienic air.
- Sleep Timer+ analyzes usage patterns for better nighttime comfort.
- Low Heating protects your home from freezing temperatures.

Multi Combination

INDOOR				AA09SP.NS1	AA12SP.NS1
Capacity	Cooling	Rated	W	2,500	3,500
	Heating	Rated	W	3,200	4,000
Sound Pressure*	Cooling	S / L / M / H	dB(A)	47 / 40 / 35 / 27 / 19	47 / 40 / 35 / 27 / 19
	Heating	L / M / H	dB(A)	48 / 40 / 35 / 27	48 / 40 / 35 / 27
Sound Power	Cooling	Power	dB(A)	60	60
Air Flow Rate	Cooling	S / L / M / H	m³/min	13.6 / 10.5 / 8.1 / 5.7	13.6 / 10.5 / 8.1 / 5.7
		Max. (Power)	m³/min	35	35
	Heating	L / M / H	m³/min	5.7 / 8.1 / 10.5	5.7 / 8.1 / 10.5
Dehumidification Rate			l/h	1.15	1.3
Power Supply			Ø / V / Hz	1, 220 ~ 240, 50	1, 220 ~ 240, 50
Power Supply Cable			N x mm²	3 x 1.0	3 x 1.0
Dimension			mm	935 x 307 x 235	935 x 307 x 235
Net Weight			kg	13.7	13.7
ACCESSORIES & OTHERS				AA09SP.NS1	AA12SP.NS1
Wall Type Single Split Compatible				Y	Y
Commercial Single Split Compatible				-	-
Dry Contact				Y	Y
Wired Remote Controller				Y	Y
ThinQ (Embedded Wi-Fi)				Y	Y

INDOOR				AA18SP.NS1
Capacity	Cooling	Rated	W	5,000
	Heating	Rated	W	5,800
Sound Pressure*	Cooling	S / L / M / H	dB(A)	49 / 44 / 39 / 34 / 29
	Heating	L / M / H	dB(A)	50 / 44 / 39 / 34
Sound Power	Cooling	Power	dB(A)	60
Air Flow Rate	Cooling	S / L / M / H	m³/min	13.6 / 11.7 / 9.9 / 7.0
		Max. (Power)	m³/min	35
	Heating	L / M / H	m³/min	7.0 / 9.9 / 11.7
Dehumidification Rate			l/h	1.8
Power Supply			Ø / V / Hz	1, 220 ~ 240, 50
Power Supply Cable			N x mm²	3 x 1.0
Dimension			mm	935 x 307 x 235
Net Weight			kg	13.7
ACCESSORIES & OTHERS				AA18SP.NS1
Wall Type Single Split Compatible				Y
Commercial Single Split Compatible				-
Dry Contact				Y
Wired Remote Controller				Y
ThinQ (Embedded Wi-Fi)				Y

* : Sound Pressure is not a value declared on Eurovent Program.
 ※ This product contains Fluorinated greenhouse gases (R32).
 ※ S : Sleep / L : Low / M : Medium / H : High
 ※ GWP : Global warming potential
 ※ t-CO₂eq : F-gas(kg)*GWP/1000
 ※ Y : Available or Applied / - : Not Available or Not Applied
 ※ For our policy of continuous product improvement, specification, design and feature are subject to change without prior notice.



UVnano™



AI DUAL Inverter™



LG participates in the ECP programme for EUROVENT AC program. Check ongoing validity of certification : www.eurovent-certification.com

Integrate with Your Senses and Interior

- Pro-Active Energy Control: Seamlessly adjust energy consumption levels and cooling capacity, ensuring efficient operation in Cooling Mode.
- Plasmaster™ Ionizer++: Say goodbye to unpleasant odors and harmful bacteria. With over 8 million ions at work, enjoy a safer and cleaner indoor environment free from Escherichia coli and Staphylococcus.
- Interior Allergy Filter: Breathe easier with our advanced filter that absorbs harmful particles like dust mites, pollen, fungi, and mold, providing a cleaner and more allergen-free space.
- UV Light Sanitization: Maintain a 99.99% bacteria-free fan with ultraviolet light, ensuring every breath you take is through clean, purified air.

Multi Combination

INDOOR				AC09BK.NSJ	AC12BK.NSJ
Capacity	Cooling	Rated	W	2,500	3,500
	Heating	Rated	W	3,200	3,800
Sound Pressure*	Cooling	S / L / M / H	dB(A)	19 / 26 / 33 / 38	19 / 26 / 35 / 39
	Heating	L / M / H	dB(A)	26 / 33 / 38	26 / 35 / 39
Sound Power	Cooling	Power	dB(A)	57	57
Air Flow Rate	Cooling	S / L / M / H	m ³ /min	3.0 / 5.0 / 7.6 / 9.1	3.0 / 5.0 / 8.1 / 9.6
		Max. (Power)	m ³ /min	11.1	11.1
	Heating	L / M / H	m ³ /min	5.0 / 7.6 / 9.1	5.0 / 8.1 / 9.6
Dehumidification Rate			l/h	1.1	1.2
Power Supply			Ø / V / Hz	1 / 220-240 / 50	1 / 220-240 / 50
Power Supply Cable			N x mm ²	4 x 0.75	4 x 0.75
Dimension			mm	837 x 308 x 192	837 x 308 x 192
Net Weight			kg	9.9	9.9
ACCESSORIES & OTHERS				AC09BK.NSJ	AC12BK.NSJ
Wall Type Single Split Compatible				Y	Y
Commercial Single Split Compatible				-	-
Dry Contact				Y	Y
Wired Remote Controller				Y	Y
ThinQ (Embedded Wi-Fi)				Y	Y

INDOOR				AC18BK.NSK	AC24BK.NSK
Capacity	Cooling	Rated	W	5,000	6,600
	Heating	Rated	W	5,800	7,500
Sound Pressure*	Cooling	S / L / M / H	dB(A)	31 / 34 / 42 / 47	31 / 34 / 42 / 47
	Heating	L / M / H	dB(A)	34 / 42 / 47	34 / 42 / 47
Sound Power	Cooling	Power	dB(A)	59	65
Air Flow Rate	Cooling	S / L / M / H	m ³ /min	8.0 / 10.5 / 13.1 / 15.5	8.0 / 10.5 / 13.1 / 16.1
		Max. (Power)	m ³ /min	16.8	18.3
	Heating	L / M / H	m ³ /min	10.5 / 13.1 / 15.5	10.5 / 13.1 / 16.1
Dehumidification Rate			l/h	1.9	2.6
Power Supply			Ø / V / Hz	1 / 220-240 / 50	1 / 220-240 / 50
Power Supply Cable			N x mm ²	4 x 0.75	4 x 0.75
Dimension			mm	998 x 345 x 212	998 x 345 x 212
Net Weight			kg	12.8	13.5
ACCESSORIES & OTHERS				AC18BK.NSK	AC24BK.NSK
Wall Type Single Split Compatible				Y	Y
Commercial Single Split Compatible				-	-
Dry Contact				Y	Y
Wired Remote Controller				Y	Y
ThinQ (Embedded Wi-Fi)				Y	Y

* : Sound Pressure is not a value declared on Eurovent Program.

※ This product contains Fluorinated greenhouse gases (R32).

※ S : Sleep / L : Low / M : Medium / H : High

※ GWP : Global warming potential

※ t-CO₂,eq : F-gas(kg)*GWP/1000

※ Y : Available or Applied / - : Not Available or Not Applied

※ For our policy of continuous product improvement, specification, design and feature are subject to change without prior notice.



LG participates in the ECP programme for EUROVENT AC program. Check ongoing validity of certification : www.eurovent-certification.com

AI-Advanced Care with Your Lower Energy Consumption

- AI AIR adapts airflow with radar sensors for optimal comfort.
- Soft Air and Dual Vane deliver gentle, tailored cooling.
- High SEER provides top performance with lower energy consumption.
- Proactive features like Human Detection and Window Open Detection reduce energy waste.
- Plasmaster™ Ionizer++, and Allergy Filter ensure hygienic air.
- Sleep Timer+ analyzes usage patterns for better nighttime comfort.
- Low Heating protects your home from freezing temperatures.

Multi Combination

INDOOR				H09S1PA.NS1
Capacity	Cooling	Rated	W	2,500
	Heating	Rated	W	3,200
Sound Pressure*	Cooling	S / L / M / H		19 / 27 / 35 / 40
	Heating	L / M / H		27 / 35 / 40
Sound Power	Cooling	Power	dB(A)	60
Air Flow Rate	Cooling	S / L / M / H	m³/min	2.0 / 5.7 / 8.1 / 10.5
		Max. (Power)	m³/min	13.6
	Heating	L / M / H	m³/min	5.7 / 8.1 / 10.5
Dehumidification Rate			l/h	1.15
Power Supply			Ø / V / Hz	1 / 220-240 / 50
Power Supply Cable			N x mm²	3 x 1.0
Dimension			mm	895 x 307 x 235
Net Weight			kg	12.6
ACCESSORIES & OTHERS				H09S1PA.NS1
Wall Type Single Split Compatible				Y
Commercial Single Split Compatible				-
Dry Contact				Y
Wired Remote Controller				Y
ThinQ (Embedded Wi-Fi)				Y

INDOOR				H12S1PA.NS1
Capacity	Cooling	Rated	W	3,500
	Heating	Rated	W	4,000
Sound Pressure*	Cooling	S / L / M / H		19 / 27 / 35 / 40
	Heating	L / M / H		27 / 35 / 40
Sound Power	Cooling	Power	dB(A)	60
Air Flow Rate	Cooling	S / L / M / H	m³/min	2.0 / 5.7 / 8.1 / 10.5
		Max. (Power)	m³/min	13.6
	Heating	L / M / H	m³/min	5.7 / 8.1 / 10.5
Dehumidification Rate			l/h	1.3
Power Supply			Ø / V / Hz	1 / 220-240 / 50
Power Supply Cable			N x mm²	3 x 1.0
Dimension			mm	895 x 307 x 235
Net Weight			kg	12.6
ACCESSORIES & OTHERS				H12S1PA.NS1
Wall Type Single Split Compatible				Y
Commercial Single Split Compatible				-
Dry Contact				Y
Wired Remote Controller				Y
ThinQ (Embedded Wi-Fi)				Y

* : Sound Pressure is not a value declared on Eurovent Program.

※ This product contains Fluorinated greenhouse gases (R32).

※ S : Sleep / L : Low / M : Medium / H : High

※ GWP : Global warming potential

※ t-CO₂eq : F-gas(kg)*GWP/1000

※ Y : Available or Applied / - : Not Available or Not Applied

※ For our policy of continuous product improvement, specification, design and feature are subject to change without prior notice.



LG participates in the ECP programme for EUROVENT AC program. Check ongoing validity of certification : www.eurovent-certification.com

AI-Advanced Care with Lower Energy Consumption

- AI AIR: Your air conditioner takes care of everything effortlessly, ensuring optimal comfort by adapting its airflow with radar sensors tracking your location and ambient temperature via ThinQ.
- High SEER: Enjoy top performance and significant energy savings.
- Soft Air: Stay comfortably cool with ultra-fine settings for wind strength and temperature, avoiding any chill.
- Dual Vane: Multi-link technology optimizes control of two separate vanes, expanding the airflow range.
- Automatic Energy Saving: Detects open windows and activates Pro-Active Energy Saving Mode Control.
- Sleep Timer+ (Plus): Adjusts cooling temperature based on your air conditioner usage patterns for a restful night.
- Low Heating, Plasmaster™ Ionizer++, Allergy Filter: Ensure a cleaner, healthier, and more comfortable indoor environment.

Multi Combination

INDOOR				H09S1DA.NS1	H12S1DA.NS1
Capacity	Cooling	Rated	W	2,500	3,500
	Heating	Rated	W	3,200	4,000
Sound Pressure*	Cooling	S / L / M / H	dB(A)	19 / 27 / 35 / 40	19 / 27 / 35 / 40
	Heating	L / M / H	dB(A)	27 / 35 / 40	27 / 35 / 40
Sound Power	Cooling	Power	dB(A)	60	60
Air Flow Rate	Cooling	S / L / M / H	m ³ /min	2.0 / 5.7 / 8.1 / 10.5	2.0 / 5.7 / 8.1 / 10.5
		Max. (Power)	m ³ /min	13.6	13.6
	Heating	L / M / H	m ³ /min	5.7 / 8.1 / 10.5	5.7 / 8.1 / 10.5
Dehumidification Rate			l/h	1.15	1.3
Power Supply			Ø / V / Hz	1 / 220-240 / 50	1 / 220-240 / 50
Power Supply Cable			N x mm ²	3 x 1.0	3 x 1.0
Dimension			mm	895 x 307 x 235	895 x 307 x 235
Net Weight			kg	11.0	11.0
ACCESSORIES & OTHERS				H09S1DA.NS1	H12S1DA.NS1
Wall Type Single Split Compatible				Y	Y
Commercial Single Split Compatible				-	-
Dry Contact				Y	Y
Wired Remote Controller				Y	Y
ThinQ (Embedded Wi-Fi)				Y	Y

INDOOR				H18S1DA.NS1	H24S1DA.NS1
Capacity	Cooling	Rated	W	5,000	6,600
	Heating	Rated	W	5,800	7,500
Sound Pressure*	Cooling	S / L / M / H	dB(A)	29 / 34 / 39 / 44	31 / 34 / 42 / 47
	Heating	L / M / H	dB(A)	34 / 39 / 44	34 / 42 / 47
Sound Power	Cooling	Power	dB(A)	60	65
Air Flow Rate	Cooling	S / L / M / H	m ³ /min	- / 8.1 / 9.9 / 11.7	- / 7.3 / 10.1 / 12.3
		Max. (Power)	m ³ /min	13.6	14.6
	Heating	L / M / H	m ³ /min	8.1 / 9.9 / 11.7	7.3 / 10.1 / 12.3
Dehumidification Rate			l/h	1.8	2.5
Power Supply			Ø / V / Hz	1 / 220-240 / 50	1 / 220-240 / 50
Power Supply Cable			N x mm ²	3 x 1.5	3 x 1.5
Dimension			mm	895 x 307 x 235	895 x 307 x 235
Net Weight			kg	12.8	12.8
ACCESSORIES & OTHERS				H18S1DA.NS1	H24S1DA.NS1
Wall Type Single Split Compatible				Y	Y
Commercial Single Split Compatible				-	-
Dry Contact				Y	Y
Wired Remote Controller				Y	Y
ThinQ (Embedded Wi-Fi)				Y	Y

* : Sound Pressure is not a value declared on Eurovent Program.

※ This product contains Fluorinated greenhouse gases (R32).

※ S : Sleep / L : Low / M : Medium / H : High

※ GWP : Global warming potential

※ t-CO₂,eq : F-gas(kg)*GWP/1000

※ Y : Available or Applied / - : Not Available or Not Applied

※ For our policy of continuous product improvement, specification, design and feature are subject to change without prior notice.



LG participates in the ECP programme for EUROVENT AC program. Check ongoing validity of certification : www.eurovent-certification.com

AI-Advanced Care with Lower Energy Consumption

- Effortless Comfort with AI AIR: Your air conditioner takes care of everything, ensuring optimal comfort by adapting airflow with radar sensors that track your location and ambient temperature via ThinQ.
- Soft Air: Stay comfortably cool without a chill, thanks to ultra-fine settings for wind strength and temperature.
- Dual Vane Technology: Enjoy optimized control of two separate vanes through multi-link technology, expanding the range of airflow control.
- Automatic Energy Saving: Detects open windows and activates Pro-Active Energy Saving Mode Control to conserve energy.
- Sleep Timer+ (Plus): Analyzes your air conditioner usage patterns to automatically adjust cooling temperature for a perfect night's sleep.
- Low Heating, Allergy Filter: Features designed to ensure a cleaner, healthier, and more comfortable indoor environment.

Multi Combination

INDOOR				P09SND.NS0
Capacity	Cooling	Rated	W	2,500
	Heating	Rated	W	3,200
Sound Pressure*	Cooling	S / L / M / H	dB(A)	48 / 42 / 35 / 27 / 19
	Heating	L / M / H	dB(A)	48 / 42 / 35 / 27
Sound Power	Cooling	Power	dB(A)	60
Air Flow Rate	Cooling	S / L / M / H	m³/min	12.7 / 10.3 / 7.6 / 4.8
		Max. (Power)	m³/min	27.0
	Heating	L / M / H	m³/min	13.0 / 10.3 / 7.6 / 4.8
Dehumidification Rate			l/h	11.5
Power Supply			Ø / V / Hz	1, 220 - 240, 50
Power Supply Cable			N x mm²	3 x 1.0
Dimension			mm	799 x 307 x 235
Net Weight			kg	10
ACCESSORIES & OTHERS				P09SND.NS0
Wall Type Single Split Compatible				Y
Commercial Single Split Compatible				-
Dry Contact				Y
Wired Remote Controller				Y
ThinQ (Embedded Wi-Fi)				Y

INDOOR				P12SND.NS0
Capacity	Cooling	Rated	W	3,500
	Heating	Rated	W	3,700
Sound Pressure*	Cooling	S / L / M / H	dB(A)	48 / 42 / 35 / 27 / 19
	Heating	L / M / H	dB(A)	48 / 42 / 35 / 27
Sound Power	Cooling	Power	dB(A)	60
Air Flow Rate	Cooling	S / L / M / H	m³/min	12.7 / 10.3 / 7.6 / 4.8
		Max. (Power)	m³/min	27.0
	Heating	L / M / H	m³/min	13.0 / 10.3 / 7.6 / 4.8
Dehumidification Rate			l/h	13.0
Power Supply			Ø / V / Hz	1, 220 - 240, 50
Power Supply Cable			N x mm²	3 x 1.0
Dimension			mm	799 x 307 x 235
Net Weight			kg	10
ACCESSORIES & OTHERS				P12SND.NS0
Wall Type Single Split Compatible				Y
Commercial Single Split Compatible				-
Dry Contact				Y
Wired Remote Controller				Y
ThinQ (Embedded Wi-Fi)				Y

* : Sound Pressure is not a value declared on Eurovent Program.
 ※ This product contains Fluorinated greenhouse gases (R32).
 ※ S : Sleep / L : Low / M : Medium / H : High
 ※ GWP : Global warming potential
 ※ t-CO₂eq : F-gas(kg)*GWP/1000
 ※ Y : Available or Applied / - : Not Available or Not Applied
 ※ For our policy of continuous product improvement, specification, design and feature are subject to change without prior notice.



LG participates in the ECP programme for EUROVENT AC program. Check ongoing validity of certification : www.eurovent-certification.com

Create a Comfortable Home with Lower Energy Use

- Seamless Control: Manage your air conditioner and other LG products effortlessly with the ThinQ App, allowing you to connect and control from anywhere, anytime.
- Active Energy Control: Adjust energy consumption and cooling capacity efficiently with Cooling Only Mode.
- Interior Allergy Filter: Absorbs harmful particles like dust mites, pollen, fungi, and mold, ensuring a cleaner and allergen-free environment.
- Auto Cleaning: Keeps the interior of the air conditioner clean by drying off the heat exchanger and performing an additional cleaning.
- Gold Fin™ Coating: Protects the heat exchanger from unnecessary wear and corrosion, enhancing durability.

Multi Combination

INDOOR				PC09SC.NSJT	PC12SC.NSJT
Capacity	Cooling	Rated	W	2,500	3,500
	Heating	Rated	W	3,200	3,800
Sound Pressure*	Cooling	S / L / M / H	dB(A)	19 / 26 / 33 / 38	19 / 26 / 35 / 39
	Heating	L / M / H	dB(A)	26 / 33 / 38	26 / 35 / 39
Sound Power	Cooling	Power	dB(A)	57	57
Air Flow Rate	Cooling	S / L / M / H	m ³ /min	3.0 / 5.0 / 7.6 / 9.1	3.0 / 5.0 / 8.1 / 9.6
		Max. (Power)	m ³ /min	11.1	11.1
	Heating	L / M / H	m ³ /min	5.0 / 7.6 / 9.1	5.0 / 8.1 / 9.6
Dehumidification Rate			l/h	1.1	1.2
Power Supply			Ø / V / Hz	1 / 220-240 / 50	1 / 220-240 / 50
Power Supply Cable			N x mm ²	4 x 0.75	4 x 0.75
Dimension			mm	837 x 308 x 189	837 x 308 x 189
Net Weight			kg	8.7	8.7
ACCESSORIES & OTHERS				PC09SC.NSJT	PC12SC.NSJT
Wall Type Single Split Compatible				Y	Y
Commercial Single Split Compatible				-	-
Dry Contact				Y	Y
Wired Remote Controller				Y	Y
ThinQ (Embedded Wi-Fi)				Y	Y

INDOOR				PC18SC.NSKT	PC24SC.NSKT
Capacity	Cooling	Rated	W	5,000	6,600
	Heating	Rated	W	5,800	7,500
Sound Pressure*	Cooling	S / L / M / H	dB(A)	31 / 34 / 42 / 47	31 / 34 / 42 / 47
	Heating	L / M / H	dB(A)	34 / 42 / 47	34 / 42 / 47
Sound Power	Cooling	Power	dB(A)	59	65
Air Flow Rate	Cooling	S / L / M / H	m ³ /min	8.0 / 10.5 / 13.1 / 15.5	8.0 / 10.5 / 13.1 / 16.1
		Max. (Power)	m ³ /min	16.8	18.3
	Heating	L / M / H	m ³ /min	10.5 / 13.1 / 15.5	10.5 / 13.1 / 16.1
Dehumidification Rate			l/h	1.9	2.6
Power Supply			Ø / V / Hz	1 / 220-240 / 50	1 / 220-240 / 50
Power Supply Cable			N x mm ²	4 x 0.75	4 x 0.75
Dimension			mm	998 x 345 x 210	998 x 345 x 210
Net Weight			kg	11.9	12.7
ACCESSORIES & OTHERS				PC18SC.NSKT	PC24SC.NSKT
Wall Type Single Split Compatible				Y	Y
Commercial Single Split Compatible				-	-
Dry Contact				Y	Y
Wired Remote Controller				Y	Y
ThinQ (Embedded Wi-Fi)				Y	Y

* : Sound Pressure is not a value declared on Eurovent Program.

※ This product contains Fluorinated greenhouse gases (R32).

※ S : Sleep / L : Low / M : Medium / H : High

※ GWP : Global warming potential

※ t-CO₂,eq : F-gas(kg)*GWP/1000

※ Y : Available or Applied / - : Not Available or Not Applied

※ For our policy of continuous product improvement, specification, design and feature are subject to change without prior notice.



LG participates in the ECP programme for EUROVENT AC program. Check ongoing validity of certification : www.eurovent-certification.com

Create a Comfortable Home with Lower Energy Use

- Seamless Control with ThinQ App: Manage your air conditioner and other LG products effortlessly from anywhere, anytime.
- Active Energy Control: Efficiently adjust energy consumption levels and cooling capacity in Cooling Only Mode.
- Auto Cleaning: Ensures a clean air conditioner interior by drying the heat exchanger and performing an additional cleaning cycle.
- Gold Fin™ Coating: Protects the heat exchanger from unnecessary wear and corrosion, enhancing durability.

Multi Combination

INDOOR				S09EC.NSJS	S12EC.NSJS
Capacity	Cooling	Rated	W	2,500	3,500
	Heating	Rated	W	3,200	3,800
Sound Pressure*	Cooling	S / L / M / H	dB(A)	19 / 26 / 33 / 38	19 / 26 / 35 / 39
	Heating	L / M / H	dB(A)	26 / 33 / 38	26 / 35 / 39
Sound Power	Cooling	Power	dB(A)	57	57
Air Flow Rate	Cooling	S / L / M / H	m³/min	3.0 / 5.0 / 7.6 / 9.1	3.0 / 5.0 / 8.1 / 9.6
		Max. (Power)	m³/min	11.1	11.1
	Heating	L / M / H	m³/min	5.0 / 7.6 / 9.1	5.0 / 8.1 / 9.6
Dehumidification Rate			l/h	1.1	1.2
Power Supply			Ø / V / Hz	1 / 220-240 / 50	1 / 220-240 / 50
Power Supply Cable			N x mm²	4 x 0.75	4 x 0.75
Dimension			mm	837 x 308 x 189	837 x 308 x 189
Net Weight			kg	8.7	8.7
ACCESSORIES & OTHERS				S09EC.NSJS	S12EC.NSJS
Wall Type Single Split Compatible				Y	Y
Commercial Single Split Compatible				-	-
Dry Contact				Y	Y
Wired Remote Controller				Y	Y
ThinQ (Embedded Wi-Fi)				Y	Y

INDOOR				S18EC.NSKS	S24EC.NSKS
Capacity	Cooling	Rated	W	5,000	6,600
	Heating	Rated	W	5,800	7,500
Sound Pressure*	Cooling	S / L / M / H	dB(A)	31 / 34 / 42 / 47	31 / 34 / 42 / 47
	Heating	L / M / H	dB(A)	34 / 42 / 47	34 / 42 / 47
Sound Power	Cooling	Power	dB(A)	59	65
Air Flow Rate	Cooling	S / L / M / H	m³/min	8.0 / 10.5 / 13.1 / 15.5	8.0 / 10.5 / 13.1 / 16.1
		Max. (Power)	m³/min	16.8	18.3
	Heating	L / M / H	m³/min	10.5 / 13.1 / 15.5	10.5 / 13.1 / 16.1
Dehumidification Rate			l/h	1.9	2.6
Power Supply			Ø / V / Hz	1 / 220-240 / 50	1 / 220-240 / 50
Power Supply Cable			N x mm²	4 x 0.75	4 x 0.75
Dimension			mm	998 x 345 x 210	998 x 345 x 210
Net Weight			kg	11.9	12.7
ACCESSORIES & OTHERS				S18EC.NSKS	S24EC.NSKS
Wall Type Single Split Compatible				Y	Y
Commercial Single Split Compatible				-	-
Dry Contact				Y	Y
Wired Remote Controller				Y	Y
ThinQ (Embedded Wi-Fi)				Y	Y

* : Sound Pressure is not a value declared on Eurovent Program.

※ This product contains Fluorinated greenhouse gases (R32).

※ S : Sleep / L : Low / M : Medium / H : High

※ GWP : Global warming potential

※ t-CO₂eq : F-gas(kg)*GWP/1000

※ Y : Available or Applied / - : Not Available or Not Applied

※ For our policy of continuous product improvement, specification, design and feature are subject to change without prior notice.



LG participates in the ECP programme for EUROVENT AC program. Check ongoing validity of certification : www.eurovent-certification.com

kBtu/H	5	7	9	12	15	18	24
kW	1.5	2.1	2.6	3.5	4.2	5.3	7.0
1 Way Cassette	-	-	● MT09R.NU1	● MT11R.NU1	-	-	-

● Multi Only ○● Compatible with Residential Single Split ○◎ Compatible with Commercial Single Split

1 Way Cassette

INDOOR				MT09R.NU1	MT11R.NU1
Capacity	Cooling / Heating	Nom.	kW	2.6 / 2.9	3.5 / 3.9
Power Input		Nom.	W	20	20
Running Current		Nom.	A	0.2	0.2
Power Supply			∅ / V / Hz	1 / 220-240 / 50	1 / 220-240 / 50
Air Flow Rate		H / M / L	m ³ /min	7.5 / 7.3 / 6.8	8.1 / 7.4 / 7.0
Sound Pressure*	Cooling	H / M / L	dB(A)	36 / 34 / 32	37 / 36 / 33
Sound Power	Cooling	Max.	dB(A)	54	57
Dehumidification Rate			l/h	1.1	1.2
Dimensions	Body	W x H x D	mm	860 x 132 x 450	860 x 132 x 450
Net Weight	Body		kg	13.5	13.5
Piping Connection	Liquid		mm (inch)	∅6.35 (1/4)	∅6.35 (1/4)
	Gas		mm (inch)	∅9.52 (3/8)	∅9.52 (3/8)
Decoration Panel	Model			PT-UAHW0 / PT-UAHG0 / PT-UPHG0	PT-UAHW0 / PT-UAHG0 / PT-UPHG0
ACCESSORIES & OTHERS				MT09R.NU1	MT11R.NU1
Commercial Single Split Compatible				-	-
Dual Vane Cassette Panel				-	-
Air Purification Kit				Y	Y
Dry Contact				Y	Y
Wireless or Wired Remote Controller				Y	Y
ThinQ (Wi-Fi)				Y	Y

* : Sound Pressure is not a value declared on Eurovent Program.

※ This product contains Fluorinated greenhouse gases (R32).

※ Y : Available or Applied / - : Not Available or Not Applied

※ For our policy of continuous product improvement, specification, design and features are subject to change without prior notice.



LG participates in the ECP programme for EUROVENT AC program. Check ongoing validity of certification : www.eurovent-certification.com

kBtu/H	5	7	9	12	15	18	24
kW	1.5	2.1	2.6	3.5	4.2	5.3	7.0
4 Way Cassette	● MT06R.NR0	● MT08R.NR0	○● CT09F.NR0	○● CT12F.NR0	-	○● CT18F.NQ0	○● CT24F.NB0

● Multi Only ○● Compatible with Residential Single Split ○● Compatible with Commercial Single Split

4 Way Cassette

INDOOR				MT06R.NR0	MT08R.NR0	CT09F.NR0
Capacity	Cooling / Heating	Nom.	kW	1.5 / 1.6	2.1 / 2.3	2.6 / 2.9
Power Input		Nom.	W	20	20	22
Running Current		Nom.	A	0.40	0.40	0.40
Power Supply			Ø / V / Hz	1 / 220-240 / 50	1 / 220-240 / 50	1 / 220-240 / 50
Air Flow Rate		H / M / L	m ³ /min	7.5 / 6.0 / 5.0	7.5 / 6.0 / 5.0	8.5 / 7.0 / 6.0
Sound Pressure*		H / M / L	dB(A)	31 / 27 / 24	31 / 27 / 24	36 / 33 / 30
Sound Power	Cooling	Max.	dB(A)	48	48	52
Dehumidification Rate			l/h	-	-	0.9
Dimensions	Body	W x H x D	mm	570 x 214 x 570	570 x 214 x 570	570 x 214 x 570
Net Weight	Body		kg	11.7	11.7	12.4
Piping Connection	Liquid		mm (inch)	Ø6.35 (1/4)	Ø6.35 (1/4)	Ø6.35 (1/4)
	Gas		mm (inch)	Ø9.52 (3/8)	Ø9.52 (3/8)	Ø9.52 (3/8)
Decoration Panel	Model			PT-QAGW0	PT-QAGW0	PT-QAGW0
	Color			Morning Fog (9001)	Morning Fog (9001)	White (9003)
	Dimensions	W x H x D	mm	620 x 34 x 620	620 x 34 x 620	620 x 35 x 620
	Weight		kg	3	3	2.9
ACCESSORIES & OTHERS				MT06R.NR0	MT08R.NR0	CT09F.NR0
Commercial Single Split Compatible				-	-	Y
Dual Vane Cassette Panel				-	-	-
Air Purification Kit				-	-	-
Dry Contact				Y	Y	Y
Wireless or Wired Remote Controller				Y	Y	Y
ThinQ (Wi-Fi)				Y	Y	Y

INDOOR				CT12F.NR0	CT18F.NQ0	CT24F.NB0
Capacity	Cooling / Heating	Nom.	kW	3.5 / 3.9	5.3 / 5.8	6.7 / 7.5
Power Input		Nom.	W	24	26	26
Running Current		Nom.	A	0.40	0.40	0.60
Power Supply			Ø / V / Hz	1 / 220-240 / 50	1 / 220-240 / 50	1 / 220-240 / 50
Air Flow Rate		H / M / L	m ³ /min	9.5 / 8.0 / 7.0	13.0 / 12.0 / 11.0	17.0 / 15.0 / 13.0
Sound Pressure*	Cooling	H / M / L	dB(A)	38 / 35 / 32	41 / 39 / 39	38 / 36 / 34
Sound Power	Cooling	Max.	dB(A)	52	57	53
Dehumidification Rate			l/h	1.4	2.0	2.7
Dimensions	Body	W x H x D	mm	570 x 214 x 570	570 x 256 x 570	840 x 204 x 840
Net Weight	Body		kg	12.4	13.9	21.1
Piping Connection	Liquid		mm (inch)	Ø6.35 (1/4)	Ø6.35 (1/4)	Ø6.35 (1/4)
	Gas		mm (inch)	Ø9.52 (3/8)	Ø12.7 (1/2)	Ø12.7 (1/2)
Decoration Panel	Model			PT-QAGW0	PT-QAGW0	PT-AAGW0
	Color			White (9003)	White (9003)	White (9003)
	Dimensions	W x H x D	mm	620 x 35 x 620	620 x 35 x 620	950 x 35 x 950
	Weight		kg	2.9	2.9	7.1
ACCESSORIES & OTHERS				CT12F.NR0	CT18F.NQ0	CT24F.NB0
Commercial Single Split Compatible				Y	Y	Y
Dual Vane Cassette Panel				-	-	Y
Air Purification Kit				-	-	Y
Dry Contact				Y	Y	Y
Wireless or Wired Remote Controller				Y	Y	Y
ThinQ (Wi-Fi)				Y	Y	Y

* : Sound Pressure is not a value declared on Eurovent Program.

※ Dual vane is applied to 24k

※ This product contains Fluorinated greenhouse gases (R32).

※ Y : Available or Applied / - : Not Available or Not Applied

※ For our policy of continuous product improvement, specification, design and features are subject to change without prior notice.



LG participates in the ECP programme for EUROVENT AC program. Check ongoing validity of certification : www.eurovent-certification.com

CAPACITY (kW)	2.6	3.5	5.3
Console	UQ09F.NA0	UQ12F.NA0	UQ18F.NA0

Console

R32, R410A

INDOOR				UQ09F.NA0	UQ12F.NA0	UQ18F.NA0
Capacity	Cooling / Heating	Nom.	kW	2.6 / 3.1	3.5 / 4.0	5.0 / 4.9
Power Input		Nom.	W	30	30	39
Running Current		Nom.	A	0.5	0.5	0.5
Power Supply			Ø / V / Hz	1 / 220-240 / 50	1 / 220-240 / 50	1 / 220-240 / 50
Air Flow Rate		H / M / L	m ³ /min	8.5 / 6.7 / 5.0	9.0 / 6.9 / 5.2	10.1 / 8.6 / 7.2
Sound Pressure*	Cooling	H / M / L	dB(A)	38 / 32 / 27	38 / 32 / 27	44 / 39 / 35
Sound Power	Cooling	Max.	dB(A)	59	59	60
Dimensions	Body	W x H x D	mm	700 x 600 x 210	700 x 600 x 210	700 x 600 x 210
Net Weight	Body		kg	16.3	16.3	16.3
Piping Connection	Liquid		mm (inch)	Ø6.35 (1/4)	Ø6.35 (1/4)	Ø6.35 (1/4)
	Gas		mm (inch)	Ø9.52 (3/8)	Ø9.52 (3/8)	Ø12.7 (1/2)
ACCESSORIES & OTHERS				UQ09F.NA0	UQ12F.NA0	UQ18F.NA0
Commercial Single Split Compatible				Y	Y	Y
Dual Vane Cassette Panel				-	-	-
Air Purification Kit (UVnano Filter Box)				-	-	-
Dry Contact				Y	Y	Y
Wireless or Wired Remote Controller				Y	Y	Y
ThinQ (Wi-Fi)				Y	Y	Y

* : Sound Pressure is not a value declared on Eurovent Program.

※ This product contains fluorinated greenhouse gases. (R32/R410A)

※ Y : Available or Applied / - : Not Available or Not Applied

※ For our policy of continuous product improvement, specification, design and features are subject to change without prior notice.



LG participates in the ECP programme for EUROVENT AC program. Check ongoing validity of certification : www.eurovent-certification.com

OUTDOOR				FM40AH.U34	
Compressor	Type	-		Scroll	
Capacity**	Cooling	Min. / Nom. / Max.	kW	2.8 / 12.3 / 15.4	
	Heating	Min. / Nom. / Max.	kW	3.1 / 13.5 / 16.2	
Low Temperature Capacity	Heating	Max.	kW	12.5	
Power Input**	Cooling	Min. / Nom. / Max.	kW	0.82 / 2.42 / 4.90	
	Heating	Min. / Nom. / Max.	kW	0.89 / 2.87 / 5.10	
Running Current**	Cooling	Min. / Nom. / Max.	A	3.7 / 11.0 / 22.2	
	Heating	Min. / Nom. / Max.	A	4.0 / 13.0 / 23.1	
EER				5.08	
COP				4.70	
SEER				7.40	
SCOP				4.20	
Pdesign (@-10°C)				kW	8.6
Seasonal Energy Label (A++ to E Scale)	Cooling / Heating			- / -	
Annual Energy Consumption	Cooling / Heating			kWh	981 / 2,867
Air Flow Rate		Nom.	m ³ /min x No.	110	
Sound Pressure Level*	Cooling	Nom.	dB(A)	51	
	Heating	Nom.	dB(A)	53	
Sound Power Level	Cooling	Max.	dB(A)	69	
	Heating	Max.	dB(A)	70	
Dimensions	W x H x D			mm	950 x 1,380 x 330
Net Weight				kg	87
Refrigerant	Type			-	R410A
	Charge			kg	4.2
	Additional Charging Volume			g/m	20
	GWP (Global Warming Potential)			-	2,087.5
	t-CO ₂ eq			-	8.768
Operation Range (Outdoor)	Cooling	Min. / Max.	°C DB	-10 / 48	
	Heating	Min. / Max.	°C WB	-25 / 18	
Power Supply				Ø / V / Hz	1 / 220-240 / 50
Power Supply Cable				No. x mm ²	3C x 4.0
Transmission Cable	ODU-BD			No. x mm ²	4C x 1.25
	BD-IDU			No. x mm ²	4C x 0.75
Circuit Breaker				A	40
Max Piping Length	Total Piping (Main+Total Branch)		m	125	
	Main Piping		m	55	
	Total Branch Piping		m	70	
	Each Branch Piping		m	15	
Piping Elevation Difference	IDU-ODU	Max.	m	30	
	IDU-IDU	Max.	m	15	
Piping Connections	Liquid			mm (inch) x No.	Ø9.52 x 1
	Gas			mm (inch) x No.	Ø19.05 x1

* : Sound Pressure is not a value declared on Eurovent Program.

Note : 1. Capacities are based on the following conditions:

Cooling : - Indoor Temperature 27°C (80.6°F) DB / 19°C (66.2°F) WB - Outdoor Temperature 35°C (95°F) DB / 24°C (75.2°F) WB

Heating : - Indoor Temperature 20°C (68°F) DB / 15°C (59°F) WB - Outdoor Temperature 7°C (44.6°F) DB / 6°C (42.8°F) WB

Piping Length - Interconnecting Piping Length 7.5m - Level Difference of Zero.

2. ** : See page "Combination Table".

3. Due to our policy of innovation some specifications may be changed without notification.

4. At least two indoor units should be connected.

5. Minimum combination capacity rate should be more than 40%.

6. This product contains fluorinated greenhouse gases. (R410A)

※ For our policy of continuous product improvement, specification, design and features are subject to change without prior notice.



LG participates in the ECP programme for EUROVENT AC program. Check ongoing validity of certification : www.eurovent-certification.com

OUTDOOR				FM48AH.U34	FM56AH.U34
Compressor	Type	-		Scroll	Scroll
Capacity**	Cooling	Min. / Nom. / Max.	kW	3.3 / 14.1 / 17.0	4.0 / 15.5 / 18.5
	Heating	Min. / Nom. / Max.	kW	3.7 / 16.0 / 17.3	4.5 / 17.4 / 18.8
Low Temperature Capacity	Heating	Max.	kW	14.5	15.5
Power Input**	Cooling	Min. / Nom. / Max.	kW	0.96 / 3.12 / 5.30	1.18 / 3.87 / 5.60
	Heating	Min. / Nom. / Max.	kW	1.06 / 3.76 / 5.40	1.29 / 4.34 / 5.80
Running Current**	Cooling	Min. / Nom. / Max.	A	4.4 / 14.1 / 24.0	5.3 / 17.5 / 25.4
	Heating	Min. / Nom. / Max.	A	4.8 / 17.0 / 24.5	5.9 / 19.7 / 26.3
EER				4.51	4.01
COP				4.25	4.01
SEER				7.20	6.90
SCOP				4.20	4.20
Pdesign(@-10°C)				9.5	9.5
Seasonal Energy Label (A++ to E Scale)	Cooling / Heating	-		- / -	- / -
Annual Energy Consumption	Cooling / Heating	kWh		1,167 / 3,167	1,348 / 3,167
Air Flow Rate		Nom.	m ³ /min x No.	110	110
Sound Pressure Level*	Cooling	Nom.	dB(A)	53	53
	Heating	Nom.	dB(A)	55	55
Sound Power Level	Cooling	Max.	dB(A)	71	73
	Heating	Max.	dB(A)	72	74
Dimensions	W x H x D		mm	950 x 1,380 x 330	950 x 1,380 x 330
Net Weight				87	87
Refrigerant	Type	-		R410A	R410A
	Charge	kg		4.2	4.2
	Additional Charging Volume	g/m		20	20
	GWP (Global Warming Potential)	-		2,087.5	2,087.5
	t-CO ₂ eq	-		8.768	8.768
Operation Range (Outdoor)	Cooling	Min. / Max.	°C DB	-10 / 48	-10 / 48
	Heating	Min. / Max.	°C WB	-25 / 18	-25 / 18
Power Supply	Ø / V / Hz			1 / 220-240 / 50	1 / 220-240 / 50
Power Supply Cable	No. x mm ²			3C x 4.0	3C x 4.0
Transmission Cable	ODU-BD	No. x mm ²		4C x 1.25	4C x 1.25
	BD-IDU	No. x mm ²		4C x 0.75	4C x 0.75
Circuit Breaker	A			40	40
Max Piping Length	Total Piping (Main+Total Branch)		m	135	145
	Main Piping		m	55	55
	Total Branch Piping		m	80	90
	Each Branch Piping		m	15	15
Piping Elevation Difference	IDU-ODU	Max.	m	30	30
	IDU-IDU	Max.	m	15	15
Piping Connections	Liquid	mm (inch) x No.		Ø9.52 x 1	Ø9.52 x 1
	Gas	mm (inch) x No.		Ø19.05 x1	Ø19.05 x1

* : Sound Pressure is not a value declared on Eurovent Program.

Note : 1. Capacities are based on the following conditions:

Cooling : - Indoor Temperature 27°C (80.6°F) DB / 19°C (66.2°F) WB - Outdoor Temperature 35°C (95°F) DB / 24°C (75.2°F) WB

Heating : - Indoor Temperature 20°C (68°F) DB / 15°C (59°F) WB - Outdoor Temperature 7°C (44.6°F) DB / 6°C (42.8°F) WB

Piping Length - Interconnecting Piping Length 7.5m - Level Difference of Zero.

2. ** : See page "Combination Table".

3. Due to our policy of innovation some specifications may be changed without notification.

4. At least two indoor units should be connected.

5. Minimum combination capacity rate should be more than 40%.

6. This product contains fluorinated greenhouse gases. (R410A)

※ For our policy of continuous product improvement, specification, design and features are subject to change without prior notice.



LG participates in the ECP programme for EUROVENT AC program. Check ongoing validity of certification : www.eurovent-certification.com

OUTDOOR				FM41AH.U34	FM49AH.U34	FM57AH.U34
Compressor	Type	-		Scroll	Scroll	Scroll
Capacity**	Cooling	Min. / Nom. / Max.	kW	2.8 / 12.3 / 15.4	3.3 / 14.1 / 17.0	4.0 / 15.5 / 18.5
	Heating	Min. / Nom. / Max.	kW	3.1 / 13.5 / 16.2	3.7 / 16.0 / 17.3	4.5 / 17.4 / 18.8
Low Temperature Capacity	Heating	Max.	kW	12.5	14.5	15.5
Power Input**	Cooling	Min. / Nom. / Max.	kW	0.82 / 2.42 / 4.90	0.96 / 3.12 / 5.30	1.18 / 3.87 / 5.60
	Heating	Min. / Nom. / Max.	kW	0.89 / 2.87 / 5.10	1.06 / 3.76 / 5.40	1.29 / 4.34 / 5.80
Running Current**	Cooling	Min. / Nom. / Max.	A	1.2 / 3.6 / 7.4	1.4 / 4.7 / 8.0	1.8 / 5.8 / 8.4
	Heating	Min. / Nom. / Max.	A	1.3 / 4.3 / 7.7	1.6 / 5.7 / 8.1	1.9 / 6.5 / 8.7
EER				5.08	4.51	4.01
COP				4.70	4.25	4.01
SEER				7.40	7.20	6.90
SCOP				4.20	4.20	4.20
Pdesign(@-10°C)	kW			8.6	9.5	9.5
Seasonal Energy Label (A++ to E Scale)	Cooling / Heating	-		- / -	- / -	- / -
Annual Energy Consumption	Cooling / Heating	kWh		981 / 2,867	1,167 / 3,167	1,348 / 3,167
Air Flow Rate		Nom.	m ³ /min x No.	110	110	110
Sound Pressure Level*	Cooling	Nom.	dB(A)	51	53	53
	Heating	Nom.	dB(A)	53	55	55
Sound Power Level	Cooling	Max.	dB(A)	69	71	73
	Heating	Max.	dB(A)	70	72	74
Dimensions	W x H x D		mm	950 x 1,380 x 330	950 x 1,380 x 330	950 x 1,380 x 330
Net Weight	kg			87	87	87
Refrigerant	Type	-		R410A	R410A	R410A
	Charge	kg		4.2	4.2	4.2
	Additional Charging Volume	g/m		20	20	20
	GWP (Global Warming Potential)	-		2,087.5	2,087.5	2,087.5
	t-CO ₂ eq	-		8.768	8.768	8.768
Operation Range (Outdoor)	Cooling	Min. / Max.	°C DB	-10 / 48	-10 / 48	-10 / 48
	Heating	Min. / Max.	°C WB	-25 / 18	-25 / 18	-25 / 18
Power Supply	Ø / V / Hz			3 / 380-415 / 50	3 / 380-415 / 50	3 / 380-415 / 50
Power Supply Cable	No. x mm ²			5C x 2.5	5C x 2.5	5C x 2.5
Transmission Cable	ODU-BD	No. x mm ²		4C x 1.25	4C x 1.25	4C x 1.25
	BD-IDU	No. x mm ²		4C x 0.75	4C x 0.75	4C x 0.75
Circuit Breaker	A			20	20	20
Max Piping Length	Total Piping (Main+Total Branch)		m	125	135	145
	Main Piping		m	55	55	55
	Total Branch Piping		m	70	80	90
	Each Branch Piping		m	15	15	15
Piping Elevation Difference	IDU-ODU	Max.	m	30	30	30
	IDU-IDU	Max.	m	15	15	15
Piping Connections	Liquid	mm (inch) x No.		Ø9.52 x 1	Ø9.52 x 1	Ø9.52 x 1
	Gas	mm (inch) x No.		Ø19.05 x1	Ø19.05 x1	Ø19.05 x1

* : Sound Pressure is not a value declared on Eurovent Program.

Note : 1. Capacities are based on the following conditions:

Cooling : - Indoor Temperature 27°C (80.6°F) DB / 19°C (66.2°F) WB - Outdoor Temperature 35°C (95°F) DB / 24°C (75.2°F) WB

Heating : - Indoor Temperature 20°C (68°F) DB / 15°C (59°F) WB - Outdoor Temperature 7°C (44.6°F) DB / 6°C (42.8°F) WB

Piping Length - Interconnecting Piping Length 7.5m - Level Difference of Zero.

2. ** : See page "Combination Table".

3. Due to our policy of innovation some specifications may be changed without notification.

4. At least two indoor units should be connected.

5. Minimum combination capacity rate should be more than 40%.

6. This product contains fluorinated greenhouse gases. (R410A)

※ For our policy of continuous product improvement, specification, design and features are subject to change without prior notice.