

Exclusive to Hitachi: all our System Free indoor units are compatible with the outdoor units Sigma, Set Free Mini, VRF Centrifugal, Utopia Prime, Micro VRF IVX Prime and IVX Comfort, in VRF or Split versions. They can be operated by a wide range of remote controls, from the simplest to the most sophisticated, to meet any requirement. The option to adjust the power of these indoor units brings a unique flexibility to the market, responding to the scalability of buildings at a lower cost.



— SYSTEM FREE indoor units



SYSTEM FREE indoor units

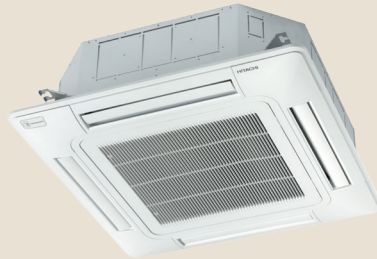
A new range of indoor units compatible with refrigerants R32 and R410A.
FSR: R410A/R32

All our Set Free indoor units will be updated, with the exception of consoles RPF/RPFI and > 6Hp ducted units, which will remain compatible with R410A only.

4-way cassette unit



600 X 600
RCIM-...FSRE

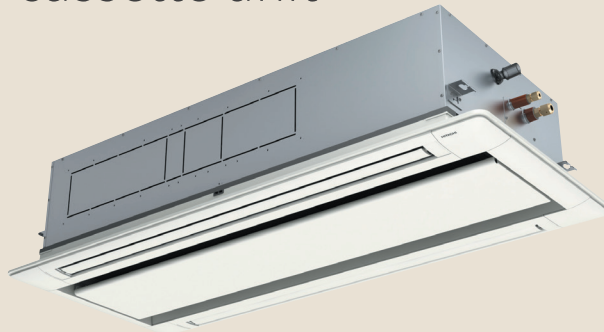


800 X 800
RCI-...FSR



- Available from 1.1 to 16 kW.
- 600 x 600 flush cassette unit.
- Save energy with the motion sensor (optional).
- Control each fan louvre separately.
- Up to 850 mm lift for condensate.

2-way cassette unit

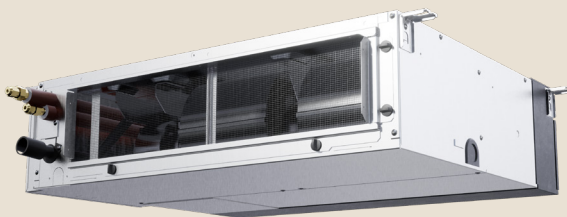


RCD-...FSR



- Available from 2.2 to 16 kW.
- Save energy with the optional motion sensor.
- Up to 850 mm lift for condensate.
- Control each louvre separately.

Ducted unit



RPIL/RPI/RPIH-0.4-6FSRE
RPI-8-20FSN



- Available from 1.1 to 56 kW.
- Up to 850 mm lift for condensate.
- Up to 220 Pa available static pressure.

Wall unit

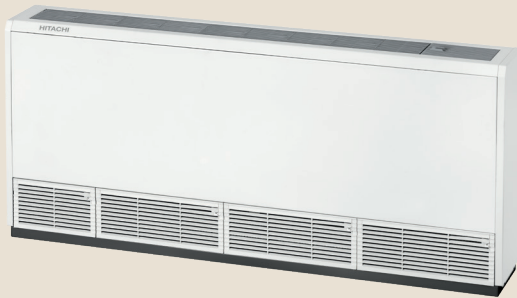


RPK...FSRM



- Available from 1.1 to 11.2 kW.
- Optional deposed electronic expansion valve.
- 4 fan speeds available.
- Integrated infrared receiver.

Console



RPF...FSN2E



- Available from 2.2 to 7.1 kW.
- Cased and un-cased version.
- Depth of just 220 mm.
- Integrated remote control (on cased model).

Ceiling unit



RPC...FSR



- Available from 3.8 to 16 kW.
- Air flow suitable for large premises.
- 4 fan speeds.
- Pipe connections from 3 directions.

Hydro Free



High-temperature
RWHT-5.0VNF1E



Low-temperature
RWLT-5.0~10VN1E

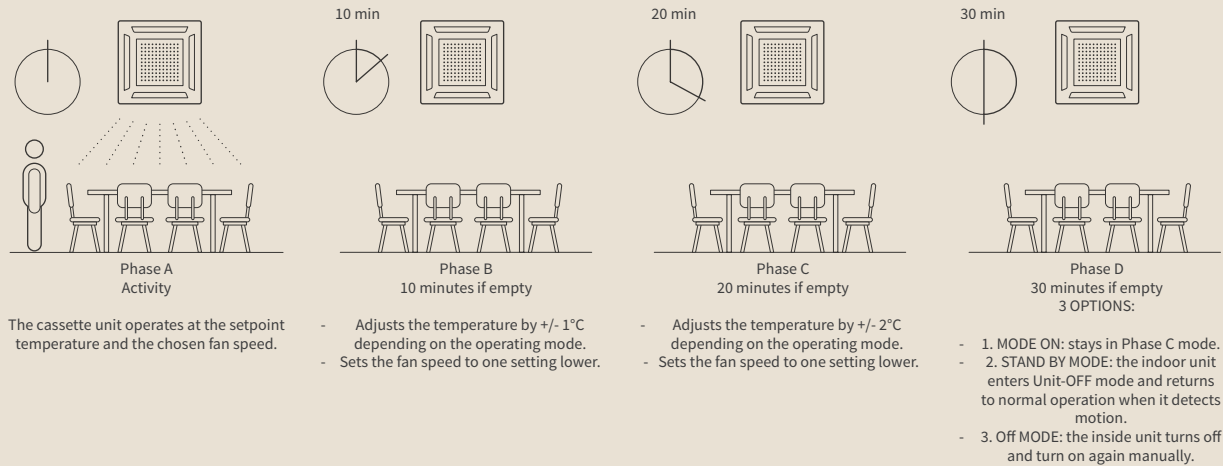


- Compatible with VRF SIGMA and Set Free Mini
- Perfect for a thermodynamic DHW solution (high-temperature module, 80°C).
- Perfect for a water heating solution in addition to DX comfort (low-temperature module).

Benefits

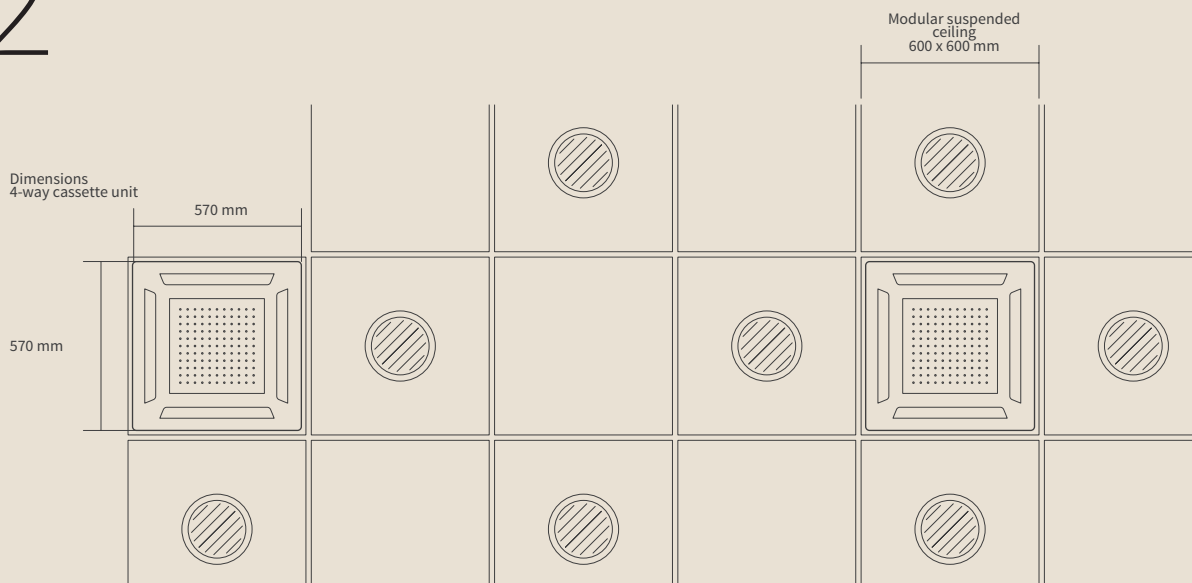
SYSTEM FREE indoor units

1 Save energy with the motion sensor



The motion sensor regulates the indoor unit according to the number of people in the room. Achieve up to 14% energy savings by avoiding unnecessary consumption when the room is unoccupied.* Option available for: 600 x 600 cassette unit, 800 x 800 cassette unit, ducted unit, ceiling unit.

2 Perfect integration

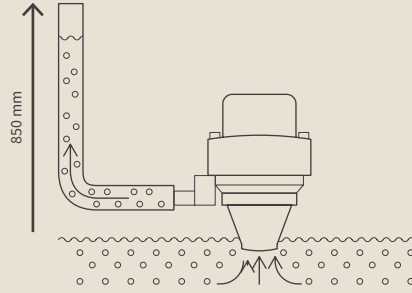


The 600x600 4-way cassette is designed to fit seamlessly into suspended ceilings.

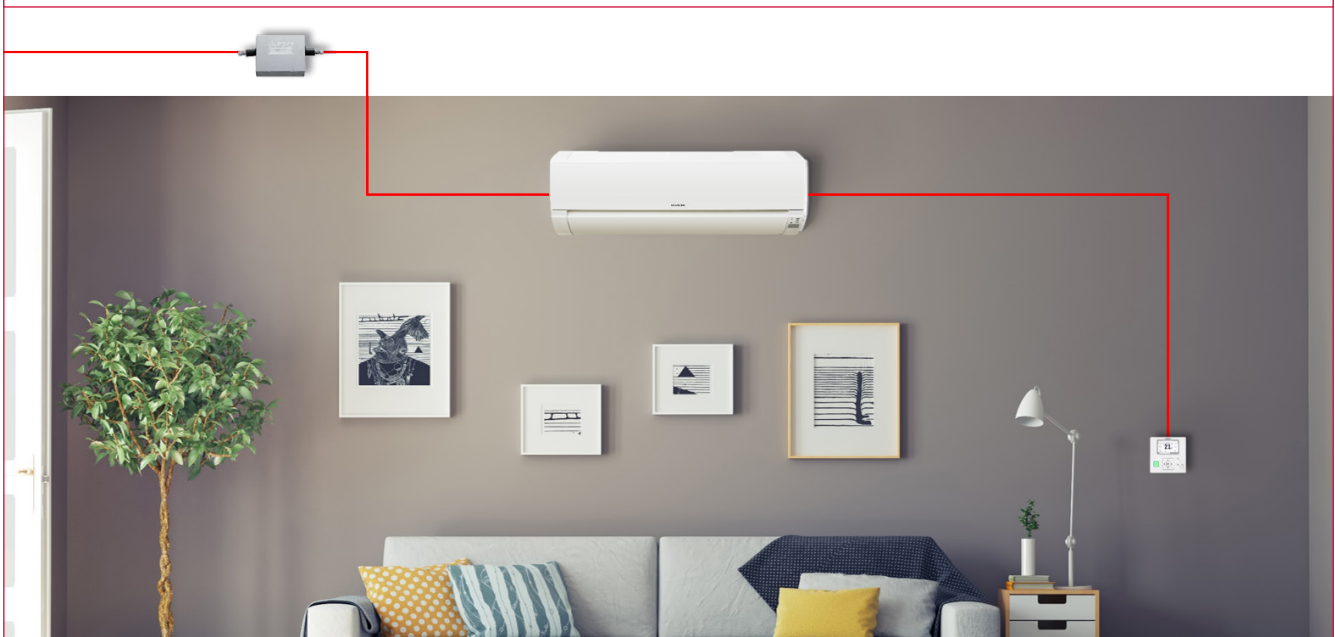
These indoor units fit perfectly into any small space.

3 Extended height for condensate extraction

Integrated as standard on cassette and ducted units (optional on ceiling units), the extraction pump can handle as much as 850 mm of condensation. The pump automatically triggers as soon as cooling mode is selected. Self-powered condensing pump: any fault on a unit's condensing pump will not affect the rest of the system.

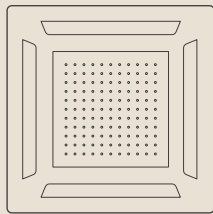


4 Low noise with the separate EEV



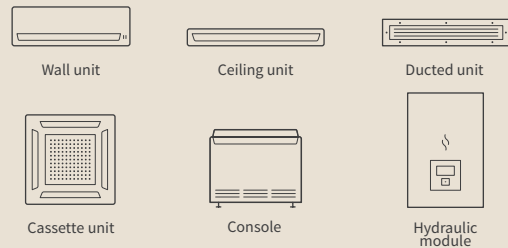
With indoor wall units, you can place the EEV outside of the room, significantly reducing noise levels for the best acoustic comfort.

5 Higher air flow rate



Same duty but more air flow than competitor's cassette, wall, and ducted units. Our indoor units have 4 fan speeds to adapt the airflow and ensure more comfort in any room.

6 Range compatibility



All our System Free indoor unit ranges are compatible with all our outdoor units (Set Free Sigma, Set Free Mini, Centrifugal, Utopia Prime, IVX Prime, and IVX Comfort). Hydrofree compatible with SIGMA and Set Free Mini only.

* For more information, please refer to the technical documentation.

600 x 600 4-way cassette unit



Installation time

The 600 x 600 cassette unit has a compact design and flush front panel to integrate perfectly into suspended ceilings (570 x 570mm casing). In addition, it is equipped as standard with a pump to remove condensation up to 850 mm.

Low noise level

With 4 fan speeds, this 600 x 600 cassette unit is one of the most silent on the market.

Energy-saving

The motion sensor (optional) automatically optimizes the level of comfort while limiting the energy consumption in rooms only occupied occasionally. It continuously analyzes thermal disparities as well as the presence of people in the room, adjusting its setting temperature (+/- 2°C), fan speed, and airflow direction to suit.

Unrivalled comfort

The GENTLE COOL function, accessible on the wired remote control PC-ARFP1E, adjusts the min. air off temperature. In summer, cold air drafts are avoided as you can set the air off temperature to the maximum setting.

Flexibility

Our 600 x 600 cassette units have an impressive range of 1.1 to 7kW, offering flexibility like no other on the market. You can also use the adjustable power settings to respond precisely to each project: 4 settings to choose from, with huge ranges in airflow.

Potential for discomfort



GentleCool: OFF

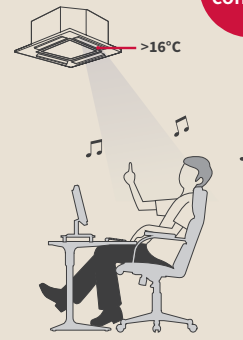
GentleCool → No cold drafts



GentleCool: LOW



GentleCool: MEDIUM



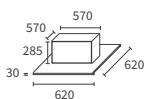
GentleCool: HIGH

Ultimate
comfort



Min. Temp° control on the air off with the remote control PCARFP1E or the CSNET monitoring system

Indoor units



- RCIM-0.4FSRE RCIM-1.5FSRE
- RCIM-0.6FSRE RCIM-2.0FSRE
- RCIM-0.8FSRE RCIM-2.5FSRE
- RCIM-1.0FSRE

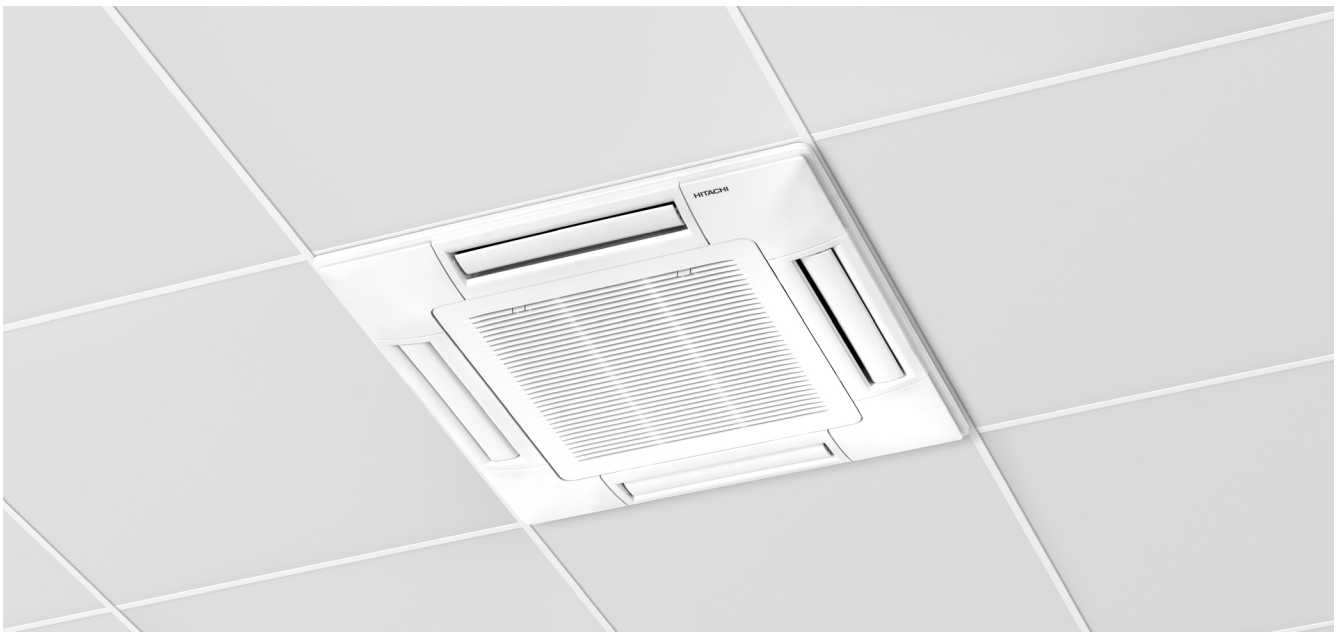
Indoor units	Unit	RCIM-0.4FSRE	RCIM-0.6FSRE	RCIM-0.8FSRE	RCIM-1.0FSRE	RCIM-1.5FSRE	RCIM-2.0FSRE	RCIM-2.5FSRE	
Power (adjustable)	Hp	0.40	0.60	0.80	1	1.30 ↔ 1.50	1.80 ↔ 2.00	2.30 ↔ 2.50	
Nominal Cooling capacity UTOPIA Prime & IVX	kW	not available		2.00	2.50	3.60	5.00	5.60	
Nominal Heating capacity UTOPIA Prime & IVX	kW	not available		2.20	2.80	4.00	5.60	6.30	
Nominal Cooling capacity SET FREE	kW	1.10	1.70	2.20	2.80	3.80 ↔ 4.00	5.20 ↔ 5.60	6.70 ↔ 7.10	
Nominal Heating capacity SET FREE	kW	1.25	1.90	2.50	3.20	4.20 ↔ 4.80	5.60 ↔ 6.30	7.50 ↔ 8.50	
Sound pressure in Cooling mode (EL/L/M/H) ⁽¹⁾	dB(A)	24.5 / 25 / 27 / 29	24.5 / 28 / 30 / 34	24.5 / 29 / 33 / 36	24.5 / 30 / 34 / 38	27.5 / 33 / 37 / 41	31 / 35 / 39 / 45	35 / 39 / 43 / 47	
Sound power	dB(A)	43	47	50	51	54	56	60	
Airflow in Cooling mode (EL/L/M/H) ⁽⁴⁾	m ³ /h	360 / 414 / 468 / 510	360 / 450 / 510 / 600	360 / 480 / 570 / 660	360 / 510 / 600 / 720	420 / 570 / 660 / 780	480 / 600 / 720 / 900	600 / 720 / 840 / 960	
Condensate pump	-	Yes							
Max. elevation	mm	850							
Diameter of pipes (Liq / Gas)	inches	1/4 - 1/2						3/8 - 5/8	
Condensate outlet diameter (ext.)	mm	32							
Dimensions (H x W x D)	mm	285 x 570 x 570							
Fascia panel dimensions (H x W x D)	mm	30 x 620 x 620							
Weight of the unit + fascia panel	kg	16 + 2.50					17 + 2.50		
Power supply	-	1 ~ 230V 50Hz							
Cable width (EN 60 335-1) ⁽²⁾	mm ²	3 x 0.75							
Recommended fuse size	A	5							
Part number of the front panel	-	P-AP56NAM							

⁽¹⁾ Sound pressure is measured under the following conditions: 1.50 m below the unit.

⁽²⁾ Data shown is for indication purposes only. It is the installer's responsibility to ensure that these cable widths meet the needs of the facility and current standards.

⁽³⁾ High-speed access is possible with remote controls PC-ARFP1E and PC-ARH1E.

⁽⁴⁾ Very low speed is available in Thermo-off mode.



You can have multiple contacts with the connector PCC-1A: progress report, error report, thermostat control, remote "Start/Stop".

Controls and compatible accessories (see the tab VRF TWIN Controls)



Simple wired controller
PC-ARH1E



Infrared controller
PC-AWR



Hard wired control
PC-ARFP1E
(PC-ARFG-E available in 2022)



Remote sensor
THM-R2AE



Infrared receiver
PC-ALHC1 (integrated) / PC-ALHZ1 (external)



Multi-tenant card
PC-AMTB



Motion sensor
SOR-NEC



Connectors
PCC-1A

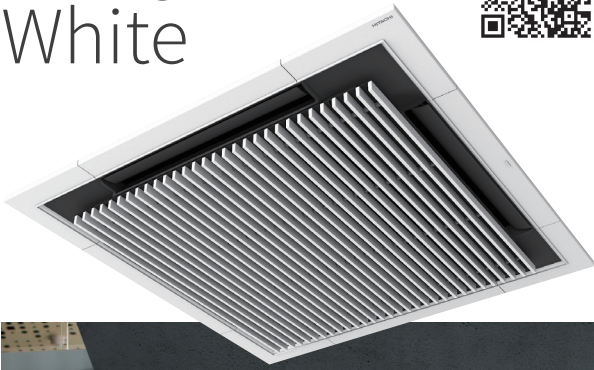


Fresh air kit
PD-75C

Silent-Iconic fascia panel for cassette unit 800x800



Design
White



Design
Black



Discover Silent-Iconic



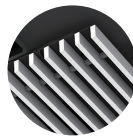


Features



A design that fits perfectly into any space

Designed to harmonize with the room – the shutter-like intake flaps are placed centrally and the fan blades are darkened to complete the discrete look.



Air extraction grid

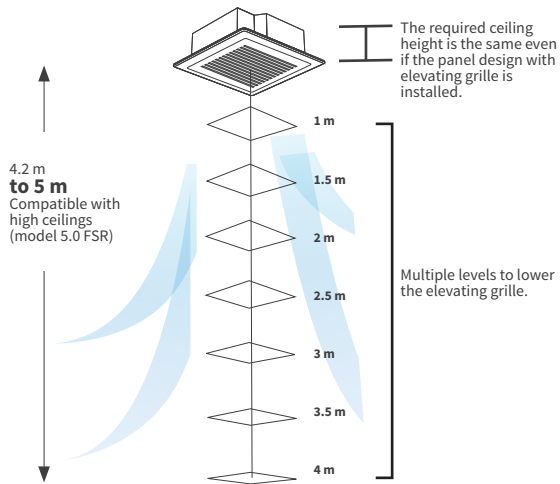


Concealed fan blades



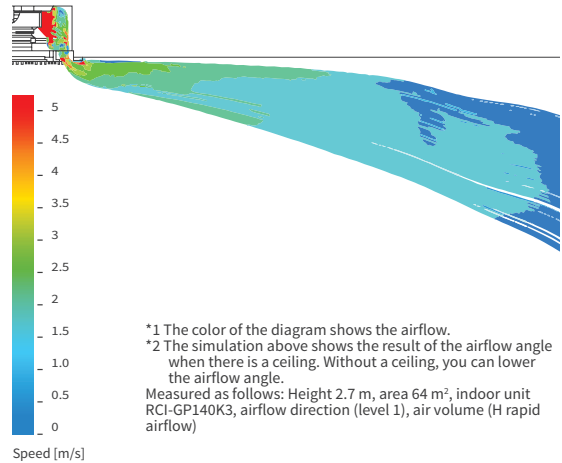
Easy-clean filter

The “fascia panel design with elevating grille” makes it easy to clean the filter. The lowering distance can reach 4 m, and the Silent-Iconic fascia panel can be installed in buildings with a high suspended ceiling heights.



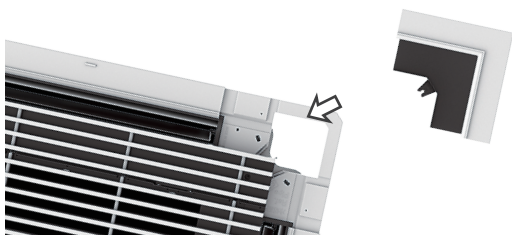
Guaranteed ease-of-use

The all-new fascia panel louvre design and air outflow shape enhance the Coanda effect, which significantly improves user comfort by avoiding the direct impact of cold air circulation.



Easy-to-install front panels

Sliding edges make installation easier – just add the screws.



Designed to align with the ceiling surface

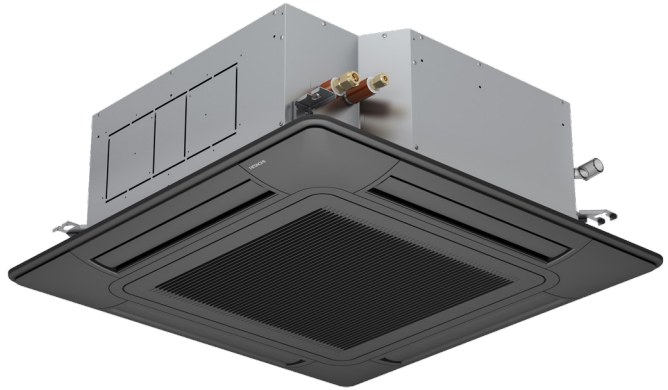
The small gap between the fascia panel and the ceiling gives a visual effect of “lightness” and blends in with the ceiling.



800 x 800 4-way cassette unit



Standard White front panel



Standard Black front panel

Installation time

The 800 x 800 cassette unit fits perfectly into suspended ceilings thanks to its low recess height (248 mm) as well as in high ceilings with a possible installation of up to 4.20 m, depending on the model. In addition, it is equipped as standard with a pump to remove condensation up to 850 mm.

Unrivalled comfort

The GENTLE COOL function, accessible on the wired remote control PC-ARFP1E, adjusts the min. air off temperature.

In summer, cold air drafts are avoided as you can set the air off temperature to the maximum setting.

Energy-saving

The motion sensor (optional) automatically optimizes the level of comfort while limiting the energy consumption in rooms only occupied occasionally.

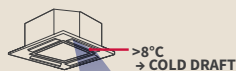
It continuously analyzes thermal disparities as well as the presence of people in the room, adjusting its setting temperature (+/- 2°C), fan speed, and airflow direction to suit.

Flexibility

Our 800 x 800 cassette units have an impressive range of 2.8 to 16 kW, offering flexibility like no other on the market.

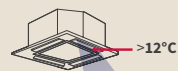
You can also use the adjustable power settings to respond precisely to each project: 4 settings to choose from, with huge ranges in airflow.

Potential for discomfort

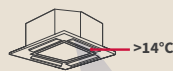


GentleCool: OFF

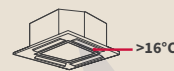
GentleCool → No cold drafts



GentleCool: LOW



GentleCool: MEDIUM



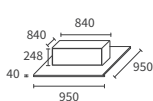
GentleCool: HIGH

Ultimate comfort

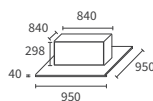


Min. Temp° control of the air off with the remote control PC-ARFP1E or the CSNET monitoring system

Indoor units



RCI-1.0FSR
RCI-1.5FSR
RCI-2.0FSR
RCI-2.5FSR



RCI-3.0FSR
RCI-4.0FSR
RCI-5.0FSR
RCI-6.0FSR

Indoor units	Unit	RCI-1.0FSR	RCI-1.5FSR	RCI-2.0FSR	RCI-2.5FSR	RCI-3.0FSR	RCI-4.0FSR	RCI-5.0FSR	RCI-6.0FSR
Power (adjustable)	Hp	1.00	1.30 – 1.50	1.80 – 2.00	2.30 – 2.50	3.00	4.00	5.00	6.00
Nominal Cooling capacity UTOPIA Prime & IVX	kW	2.50	3.60	5.00	5.60	7.10	10.00	12.50	14.00
Nominal Heating capacity UTOPIA Prime & IVX	kW	2.80	4.00	5.60	6.30	8.00	11.20	14.00	16.00
Nominal Cooling capacity SET FREE	kW	2.80	3.80 – 4.00	5.20 – 5.60	6.70 – 7.10	8.00	11.20	14.00	16.00
Nominal Heating capacity SET FREE	kW	3.20	4.20 – 4.80	5.60 – 6.30	7.50 – 8.50	9.00	12.50	16.00	18.00
Sound pressure in Cooling mode (EL/L/M/H) ⁽¹⁾⁽²⁾	dB(A)	27 / 28 / 30 / 33	27 / 30 / 31 / 35	27 / 30 / 32 / 37	28 / 32 / 36 / 42	33 / 39 / 43 / 48	35 / 40 / 45 / 48	37 / 41 / 46 / 48	
Sound power	dB(A)	52	53	55	56	57	64	64	65
Airflow in Cooling mode (EL/L/M/H) ⁽⁴⁾	m ³ /h	540 / 660 / 780 / 900	660 / 840 / 1020 / 1260	660 / 840 / 1020 / 1320	840 / 1080 / 1380 / 1620	840 / 1080 / 1380 / 1620	1200 / 1440 / 1860 / 2220	1260 / 1560 / 1980 / 2220	1320 / 1680 / 2100 / 2220
Condensate pump	-	Yes							
Max. elevation	mm	850							
Diameter of pipes (Liq / Gas)	inches	1/4 - 1/2				3/8 - 5/8			
Condensate outlet diameter (ext.)	mm	32							
Dimensions (H x W x D)	mm	248 x 840 x 840				298 x 840 x 840			
Fascia panel dimensions (H x W x D)	mm	40 x 950 x 950							
Weight of the unit + fascia panel	kg	20 + 6.50	21 + 6.50	22 + 6.50	26 + 6.50				
Power supply	-	1 ~ 230V 50Hz							
Cable width (EN 60 335-1) ⁽³⁾	mm ²	3 x 0.75							
Recommended fuse size	A	5							
Part number for standard White front panel (Black)	-	P-N23NA2 (P-AP160KA3)							

⁽¹⁾ Sound pressure is measured under the following conditions; 1.50 m below the unit.
⁽²⁾ Data shown is for indication purposes only. It is the installer's responsibility to ensure that these cable widths meet the needs of the facility and current standards.
⁽³⁾ High-speed access is possible with remote controls PC-ARFP1E and PC-ARH1E.
⁽⁴⁾ Very low speed is available in Thermo-off mode.

Silent-Iconic front panel

	Natural White	Black
Type of fascia panel	White fascia panel design	White fascia panel design with self-elevating grille
Part number	P-GP160NAP	P-GP160NAPU
Dimensions (H x L x D)	52 x 950 x 950 mm	



Fascia panel lift	d7	01	02	03	04	05	06	07
Control lowering on wired remote control PC-ARFP1E	Lowers in 7 stages	1.0 m	1.5 m	2.0 m	2.5 m	3.0 m	3.5 m	4.0 m

You can have multiple contacts with the connector PCC-1A : progress report, error report, thermostat control, remote "Start/Stop".

Controls and compatible accessories (see the tab VRF TWIN Controls)

- Simple wired controller
PC-ARH1E
- Infrared controller
PC-AWR
- Hard wired remote
PC-ARFP1E
(PC-ARFG-E available in 2022)
- Fresh air kit
PD-75A
- Remote sensor
THM-R2AE
- Infrared receiver
PC-ALH3 (integrated) PC-ALHZ1 (external)
- Multi-tenant card
PC-AMTB
- Motion sensor
PS-MSK2
- Connectors
PCC-1A
- Remote blower connection kit
PDF-71C1 / PDF-160C1

2-way cassette unit



Unrivaled comfort

The GENTLE COOL function, accessible on the wired remote control PCARFP1E, adjusts the min. air off temperature. In summer, cold air drafts are avoided as you can set the air off temperature to the maximum setting.

Stand-out solution

Our choice of 2-way cassettes, ranging from 2.2 to 16 kW, is the perfect solution for larger rectangular spaces. You can also use the adjustable power settings to respond precisely to each project.

Installation time

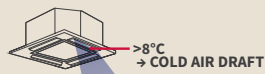
This unit is easy to install thanks to its light weight (23 kg) and the lift pump (850 mm) built-in as standard.

Energy-saving

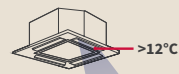
The motion sensor (optional) automatically optimizes the level of comfort while limiting the energy consumption in rooms only occupied occasionally. It continuously analyzes thermal disparities as well as the presence of people in the room, adjusting its setting temperature (down to 2°C), fan speed, and airflow direction to suit.

Potential for discomfort

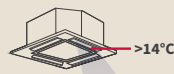
GentleCool → No cold drafts



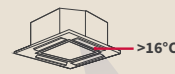
GentleCool: OFF



GentleCool: LOW



GentleCool: MEDIUM

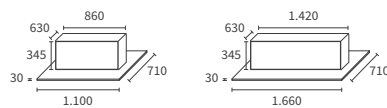


GentleCool: HIGH



Min. Temp° control of the air off with the remote control PC-ARFP1E or the CSNET monitoring system

Indoor units



- RCD-0.8FSR
- RCD-1.0FSR
- RCD-1.5FSR
- RCD-2.0FSR
- RCD-2.5FSR
- RCD-3.0FSR
- RCD-4.0FSR
- RCD-5.0FSR
- RCD-6.0FSR

2-way cassette unit

Indoor units	Unit	RCD-0.8FSR	RCD-1.0FSR	RCD-1.5FSR	RCD-2.0FSR	RCD-2.5FSR	RCD-3.0FSR	RCD-4.0FSR	RCD-5.0FSR	RCD-6.0FSR	
Power (adjustable)	Hp	0.80	1.00	1.30 – 1.50	1.80 – 2.00	2.30 – 2.50	3.00	4.00	5.00	6.00	
Nominal Cooling capacity UTOPIA Prime & IVX	kW	2.00	2.50	3.60	5.00	5.60	7.10	10.00	12.50	14.00	
Nominal Heating capacity UTOPIA Prime & IVX	kW	2.20	2.80	4.00	5.60	6.30	8.00	11.20	14.00	16.00	
Nominal Cooling capacity SET FREE	kW	2.20	2.80	3.80 – 4.00	5.20 – 5.60	6.70 – 7.10	8.00	11.20	14.00	16.00	
Nominal Heating capacity SET FREE	kW	2.50	3.20	4.20 – 4.80	5.60 – 6.30	7.50 – 8.50	9.00	12.50	16.00	18.00	
Sound pressure in Cooling mode (EL/L/M/H) ⁽¹⁾	dB(A)	27 / 28 / 29 / 30	27 / 28 / 29 / 31	30 / 31 / 34 / 37	30 / 33 / 36 / 39	33 / 36 / 39 / 42	33 / 38 / 42 / 45	34 / 37 / 40 / 43	35 / 41 / 44 / 47	39 / 42 / 45 / 48	
Sound power	dB(A)	45	48	51	52	55	58	57	60	61	
Airflow in Cooling mode (EL/L/M/H) ⁽⁴⁾	m ³ /h	390 / 450 / 540 / 600	420 / 510 / 570 / 660	600 / 690 / 780 / 900	630 / 750 / 870 / 990	750 / 870 / 990 / 1110	750 / 960 / 1110 / 1260	1200 / 1380 / 1590 / 1800	1260 / 1620 / 1860 / 2100	1440 / 1710 / 1950 / 2220	
Condensate pump	-	yes									
Max. elevation	mm	850									
Diameter of pipes (Liq / Gas)	inches	1/4 - 1/2					3/8 - 5/8				
Condensate outlet diameter (ext.)	mm	32									
Dimensions (H x W x D)	mm	345 x 860 x 630						345 x 1420 x 630			
Fascia panel dimensions (H x W x D)	mm	30 x 1100 x 710						30 x 1660 x 710			
Weight of the unit + fascia panel	kg	23 + 7.50			25 + 7.50			39 + 10.50			
Power supply	-	1~ 230V 50Hz									
Cable width (EN 60 335-1) ⁽²⁾	mm ²	3 x 0.75									
Recommended fuse size	A	5									
Part number of the fascia panel	-	P-AP90DNA						P-AP160DNA			

(1) Sound levels (pressure) are measured in an anechoic chamber at 1.50 m under the unit.

(2) Data shown is for indication purposes only. It is the installer's responsibility to ensure that these cable widths meet the needs of the facility.

(3) High-speed access is possible with remote controls PC-ARFP1E and PC-ARH1E.

(4) Very low speed is available in Thermo-off mode.



You can have multiple contacts with the connector PCC-1A : progress report, error report, thermostat control, remote "Start/Stop".

Controls and compatible accessories (see the tab VRF TWIN Controls)



Simple wired controller
PC-ARH1E



Infrared controller
PC-AWR



Hard wired controller
PC-ARFP1E
(PC-ARFG-E available in 2022)



Remote sensor
THM-R2AE



Infrared receiver
PC-ALHD1 (integrated) / PC-ALHZ1 (external)



Multi-tenant card
PC-AMTB



Motion sensor
SOR-NED



Connectors
PCC-1A



Fresh air kit
PD-150D

Ducted unit



GENTLE COOL air off temperature setting for ultimate comfort

The GENTLE COOL air off temperature setting, accessible on the wired remote control PC-ARFP1E, adjusts the min. air off temperature. There is minimal risk of condensation forming, which improves the air quality. It also stops any summer drafts.

Flexible installation

Our new ducted units offer greater flexibility when it comes to installation. The electrical box can be moved. The 100Pa model has rear pipework connections so it can easily fit into small spaces, and the pump can be disconnected onsite.

Easy maintenance

Up to 850 mm lift for condensate. Filter is accessible from below or the side (0.4 to 6 hp).

Compatible with Airzone solution

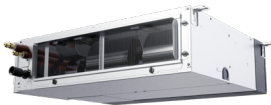
Thanks to its partnership with Airzone, Hitachi is able to offer you precision step-by-step temperature control.

30% fresh air supply

All Hitachi ducted units can work on 30% fresh air to provide the best quality and cleanest air.

Available in sizes 45 and 56 kW

The most extensive range on the market, from 1.1kW to 56 kW.



Slim ducted unit 100 Pa 1.1 to 4 kW

- Integrated and removable condensate pump.
- Filter accessible from below or from the right side.
- Low-height: 197 mm.
- Pipe connections from the rear.
- Electric box (can be moved)
- Air return from the rear or from below (optional).



Ducted unit 150 Pa 4 to 16 kW

- Condensate pump included.
- Air retron from the rear or below (optional).
- Optional motion sensor.
- Height: 240 mm.
- Electric box (can be moved, sizes 1.5 and 2 hp).
- Filter accessible from below or from the left or right side.



Ducted unit 200 Pa 11 to 16 kW

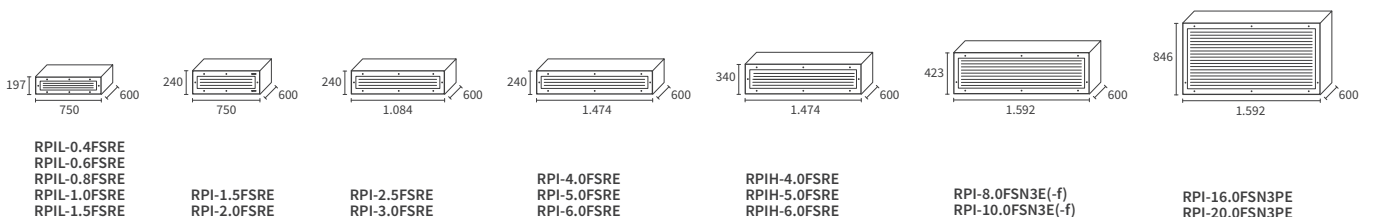
- Condensate lift pump included.
- Air retron from the rear.
- Filter accessible from below or from the left or right side.



High-Pressure High-Capacity ducted unit 22 to 56 kW

- Up to 220 Pa available static pressure.
- Sizes 8, 10, 16 and 20 hp.

Indoor units



Slim ducted unit, height 197mm (up to 100 Pa available pressure)

Indoor units	Unit	RPIL-0.4FSRE	RPIL-0.6FSRE	RPIL-0.8FSRE	RPIL-1.0FSRE	RPIL-1.5FSRE
Power (adjustable)	Hp	0.40	0.60	0.80	1.00	1.30 – 1.50
Nominal Cooling capacity UTOPIA Prime & IVX	kW	not available	not available	2.00	2.50	3.60
Nominal Heating capacity UTOPIA Prime & IVX	kW	not available	not available	2.20	2.80	4.00
Nominal Cooling capacity SET FREE	kW	1.10	1.70	2.20	2.80	3.80 – 4.00
Nominal Heating capacity SET FREE	kW	1.30	1.90	2.50	3.20	4.20 – 4.80
Sound pressure in Cooling mode (L / M / H) ⁽¹⁾⁽³⁾	dB(A)	22 / 23 / 24	23 / 25 / 27	23 / 25 / 28		25 / 28 / 30
Sound power	dB(A)	48	51	52		53
Airflow in Cooling mode (L / M / H) (SP02) ⁽⁴⁾	m ³ /h	300 / 330 / 360	330 / 390 / 438	342 / 390 / 462		390 / 474 / 528
Rated static pressure (min-max)	Pa	15 (0-100)		25 (0-100)		
Condensate pump	-	yes (can be removed to use a gravity drain kit)				
Max. elevation	mm	850				
Diameter of pipes (Liq / Gas)	inches	1/4 - 1/2				
Condensate outlet diameter (ext)	mm	32				
Dimensions (H x L x D)	mm	197 x 750 x 600				
Weight	kg	23				
Power supply	-	1~ 230V 50Hz				
Cable width (EN 60 335-1) ⁽²⁾	mm ²	3 x 0.75				
Recommended fuse size	A	5				

Compact ducted unit (up to 150 Pa available pressure)

Indoor units	Unit	RPI-1.5FSRE	RPI-2.0FSRE	RPI-2.5FSRE	RPI-3.0FSRE	RPI-4.0FSRE	RPI-5.0FSRE	RPI-6.0FSRE
Power (adjustable)	Hp	1.30 – 1.50	1.80 – 2.00	2.30 – 2.50	3.00	4.00	5.00	6.00
Nominal Cooling capacity UTOPIA Prime & IVX	kW	3.60	5.00	5.60	7.10	10.00	12.50	14.00
Nominal Heating capacity UTOPIA Prime & IVX	kW	4.00	5.60	6.30	8.00	11.20	14.00	16.00
Nominal Cooling capacity SET FREE	kW	3.80 – 4.00	5.20 – 5.60	6.70 – 7.10	8.00	11.20	14.00	16.00
Nominal Heating capacity SET FREE	kW	4.20 – 4.80	5.60 – 6.30	7.50 – 8.50	9.00	12.50	16.00	18.00
Sound pressure in Cooling mode (L / M / H) ⁽¹⁾⁽³⁾	dB(A)	29 / 30 / 32	29 / 30 / 32	30 / 32 / 34	31 / 33 / 35	35 / 38 / 39	36 / 38 / 40	36 / 38 / 40
Sound power	dB(A)	55	58	57	59	62	64	64
Airflow in Cooling mode (L / M / H) (SP02) ⁽⁴⁾	m ³ /h	600 / 690 / 840	630 / 720 / 840	900 / 1020 / 1200	960 / 1140 / 1290	1680 / 2070 / 2160	1920 / 2100 / 2220	1950 / 2130 / 2250
Rated static pressure (min-max)	Pa	25 (0-150)			37 (0-150)		50 (0-150)	
Condensate pump	-	yes						
Max. elevation	mm	850						
Diameter of pipes (Liq / Gas)	inches	1/4 - 5/8			3/8 - 5/8			
Condensate outlet diameter (ext)	mm	32						
Dimensions (H x L x D)	mm	240 x 750 x 600		240 x 1084 x 600		240 x 1474 x 600		
Weight	kg	26		32		42		
Power supply	-	1~ 230V 50Hz						
Cable width (EN 60 335-1) ⁽²⁾	mm ²	3 x 0.75						
Recommended fuse size	A	5						

High-Pressure ducted unit (up to 200 Pa available pressure)

Indoor units	Unit	RPIH-4.0FSRE	RPIH-5.0FSRE	RPIH-6.0FSRE
Power (adjustable)	Hp	4.00	5.00	6.00
Nominal Cooling capacity UTOPIA Prime & IVX	kW	10.00	12.50	14.00
Nominal Heating capacity UTOPIA Prime & IVX	kW	11.20	14.00	16.00
Nominal Cooling capacity SET FREE	kW	11.20	14.00	16.00
Nominal Heating capacity SET FREE	kW	12.50	16.00	18.00
Sound pressure in Cooling mode (L / M / H) ⁽¹⁾⁽³⁾	dB(A)	35 / 38 / 39	36 / 38 / 40	36 / 38 / 40
Sound power	dB(A)	62	64	64
Airflow in Cooling mode (L / M / H) (SP00) ⁽⁴⁾	m ³ /h	1740 / 1890 / 2100	2160 / 2040 / 2160	1920 / 2040 / 2160
Rated static pressure (min-max)	Pa	155 (0-200)		
Condensate pump	-	yes		
Max. elevation	mm	850		
Diameter of pipes (Liq / Gas)	inches	3/8 - 5/8		
Condensate outlet diameter (ext)	mm	32		
Dimensions (H x L x D)	mm	340 x 1474 x 600		
Weight	kg	44		
Power supply	-	1~ 230V 50Hz		
Cable width (EN 60 335-1) ⁽²⁾	mm ²	3 x 0.75		
Recommended fuse size	A	5		

⁽¹⁾ Sound levels (pressure) are measured in an anechoic chamber at 1.50 m under the unit (without a ceiling under the unit), with an extraction duct at 1 m and discharge duct at 2 m.

⁽²⁾ Data shown is for indication purposes only. It is the installer's responsibility to ensure that these cable widths meet the needs of the facility.

⁽³⁾ Ultra high-speed access is possible with remote controls PC-ARFP1E (or PC-ARFG-E available second half of 2021) and PC-ARH1E.

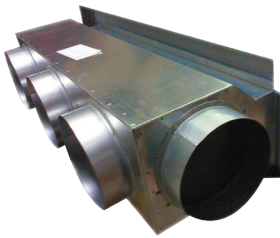
⁽⁴⁾ SP: external static pressure (defined with the optional function "C5" on the remote control: 00: standard, 01: external static high-pressure, 02: external static low-pressure).

High-Capacity ducted unit (up to 220 Pa available pressure) (sizes 16 and 20 hp: unique on the market)

Indoor units	Unit	High-pressure		High-power	
		RPI-8.0FSN3E	RPI-10.0FSN3E	RPI-16.0FSN3PE	RPI-20.0FSN3PE
Power (adjustable)	Hp	8.00	10.00	16.00	20.00
Nominal Cooling capacity Micro VRF IVX COMFORT	kW	20.00	25.00	40.00	50.00
Nominal Heating capacity Micro VRF IVX COMFORT	kW	22.40	28.00	44.80	56.00
Nominal Cooling capacity SET FREE	kW	22.40	28.00	45.00	56.00
Nominal Heating capacity SET FREE	kW	25.00	31.00	50.00	63.00
Sound pressure in Cooling mode (L / M / H) ⁽¹⁾⁽²⁾	dB(A)	51 / 54 / 54	52 / 55 / 55	53 / - / 56	54 / - / 57
Sound power	dB(A)	77	78	79	80
Airflow in Cooling mode (L/M/H)	m ³ /h	3570 / 3960 / 3960	4056 / 4500 / 4500	7200 / - / 7920	8220 / - / 9000
Rated static pressure (min-max)	Pa	200 (180 - 220)		180 (220)	
Dehumidification	l/h	7.70	8.80	15.00	17.00
Condensate pump	-	no			
Diameter of pipes (Liq / Gas)	inches	3/8 - 3/4	3/8 - 7/8	2 x 3/8 - 3/4 (requires a E-162SN4)	2 x 3/8 - 7/8 (requires a E-242SN3)
Condensate outlet diameter (ext)	mm	25		2 x 25	
Dimensions (H x L x D)	mm	423 x 1592 x 600		846 x 1592 x 600	
Weight	kg	85	87	171	175
Power supply	-	1~ 230V 50Hz			
Cable width (EN 60 335-1) ⁽²⁾	mm ²	3 x 2.50		2 x (3 x 2.50)	
Recommended fuse size	A	10		25	

(1) Sound pressure is measured under the following conditions: at 1.50 m below the unit (no ceiling under the unit), with an extraction duct at 1 m and a discharge duct at 2 m.
 (2) Data shown is for indication purposes only. It is the installer's responsibility to ensure that these cable widths meet the needs of the facility and current standards.
 (3) High-speed access is possible with remote controls PC-ARFP1E and PC-ARH1E.

Plenums (stand-alone)



Type of Plenum	Number of outputs / diameter (mm)	Part number	Compatibility
Supply and return air	2 / Ø 200	PL-RPIL-FSRE	RPIL-0.4~1.5FSRE
Supply and return air	3 / Ø 200	PL-RPI1.5/2FSRE	RPI-1.5~2.0FSRE
Supply and return air	5 / 3 / Ø 200	PL-RPI2.5/3FSRE	RPI-2.5~3.0FSRE
Supply and return air	5 / 4 / Ø 200	PL-RPI4-6FSRE	RPI-4.0~6.0FSRE

You can have multiple contacts with the connector PCC-1A: progress report, error report, thermostat control, remote "Start/Stop".

Controls and compatible accessories (see the tab VRF TWIN Controls)



Simple wired controller
PC-ARH1E



Infrared controller
PC-AWR



Hard wired controller
PC-ARFP1E
(PC-ARFG-E available in 2022)



Motion sensor
All sizes of ducted units
SOR-MSK



Remote sensor
THM-R2AE



Infrared receiver
PC-ALHZ1 (external)



Multi-tenant card
PC-AMTB



Connectors
PCC-1A

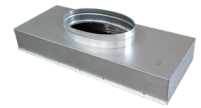


Gravitational condensation unit connection kit
D-DGK15R



Kit air return from below
D-ICA15R → RPIL (100 Pa)
D-ICA20R → RPI 1.5 to 2.0 hp (150 Pa)
D-ICA30R → RPI 2.5 to 3.0 hp (150 Pa)
D-ICA60R → RPI 4.0 to 6.0 hp (150 Pa)

Compatibility table: airzone plenum with ducted units RPIL and RPI



		Supply air plenum	2 air outlets	3 air outlets	4 air outlets	5 air outlets	6 air outlets	Return air plenum
RPIL-FSRE	1.0-1.5 (750 x 197 mm)	Slim	-	AZEZ6HITSL08L3	AZEZ6HITSL08L4	AZEZ6HITSL08L5	-	AZCEZHPR08XS
		Medium	AZEZ6HITBS08XS2	AZEZ6HITBS08XS3	-	-	-	
RPI-FSRE	1.5-2.0 (750 x 240 mm)	Standard	AZEZ6HITST08S2	AZEZ6HITST08S3	AZEZ6HITST08S4	-	-	AZCEZHPR08S
		Medium	AZEZ6HITBS08S2	AZEZ6HITBS08S3	AZEZ6HITBS08S4	-	-	
	2.5-3.0 (1084 x 240 mm)	Standard	-	AZEZ6HITST08M 3	AZEZ6HITST08M4	AZEZ6HITST08M5	AZEZ6HITST08M6	AZCEZHPR08M
		Medium	-	AZEZ6HITBS08M 3	AZEZ6HITBS08M4	AZEZ6HITBS08M5	AZEZ6HITBS08M6	
4.0-5.0-6.0 (1474 x 240 mm)	Standard	-	-	-	AZEZ6HITST08L5	AZEZ6HITST08L6	AZCEZHPR08L	
	Medium	-	-	-	AZEZ6HITBS08L5	AZEZ6HITBS08L6		

Connected and intuitive interfaces



Airzone Blueface Thermostat
Wired connection / 3.5" touchscreen: Configurable as a general thermostat or by zone. A number of features and settings, ideal for ultimate control of your entire system, for more efficient and responsible heating. End-to-end, intuitive interface. Eco-adapt and standby function for tangible energy saving. Control the temperature, mode, and fan speed. Weekly programming. Access to weather forecasts (with Airzone Cloud webserver login) to anticipate changes in temperature.



Airzone Think thermostat
Wired or wireless connection / 2.7" screen: Configurable as a general thermostat or by zone. Low-energy device that makes it easy to reduce energy costs. Stylish and intuitive interface. Control the temperature, mode, and fan speed. Access to weather forecasts (with Airzone Cloud webserver login) to anticipate changes in temperature.



Thermostat Airzone Lite
Wired or wireless connection: In systems with the Blueface thermostat, this solution is perfect for quick access to essential functions. Its modern and fun interface makes it easier to use, with colors indicating the mode and temperature of the area. Start/ Stop function. Control the setting temperature in increments of 1°C with a scope of ±3°C.



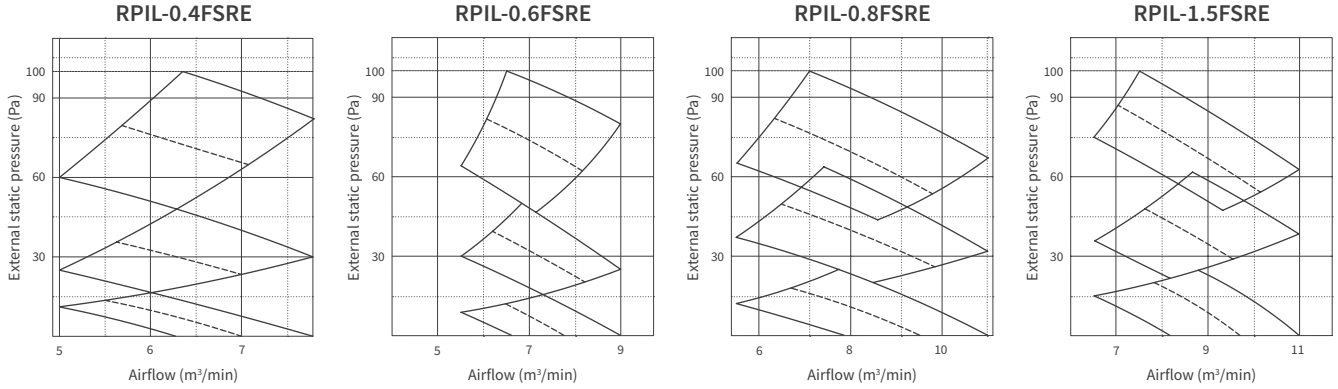
Webserver Airzone Cloud
The Airzone Cloud app, compatible on your smartphone, tablet, and PC, offers complete remote control of the installation; anywhere, anytime. You can control multiple servers at once and up to 32 systems on a single webserver. All the features of your thermostats are combined on the cloud: Control the temperature, weekly programming, weather forecasts, login authorization...

AZCE6BLUEFACEB	AZCE6THINKCB	AZCE6LITECB	AZX6WSCLOUDDINC
-	AZCE6THINKRB	AZCE6LITERB	AZX6WSCLOUDDINR
AZX6CABLEBUS10	AZX6CABLEBUS10	AZX6CABLEBUS10	AZX6CABLEBUS10

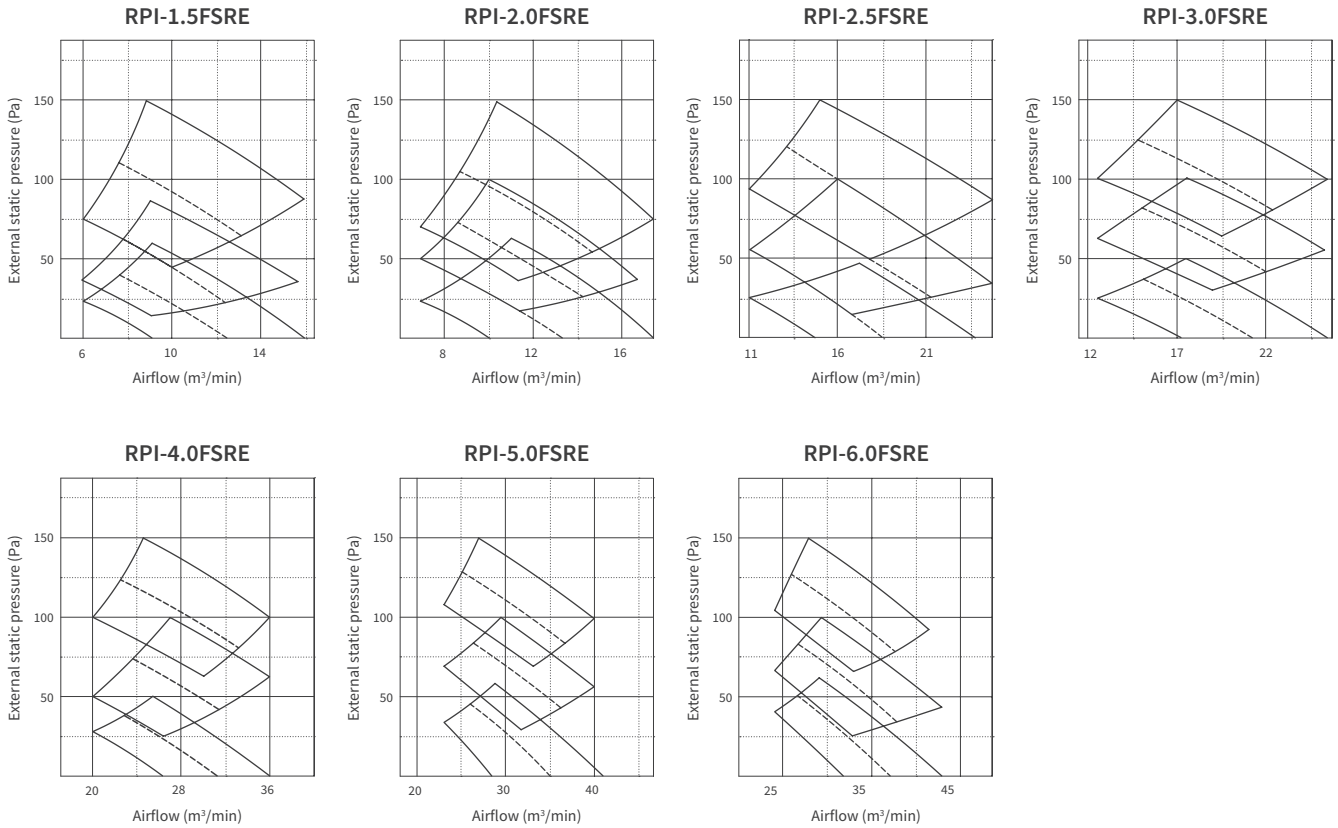
Static pressure curve

Ducted unit

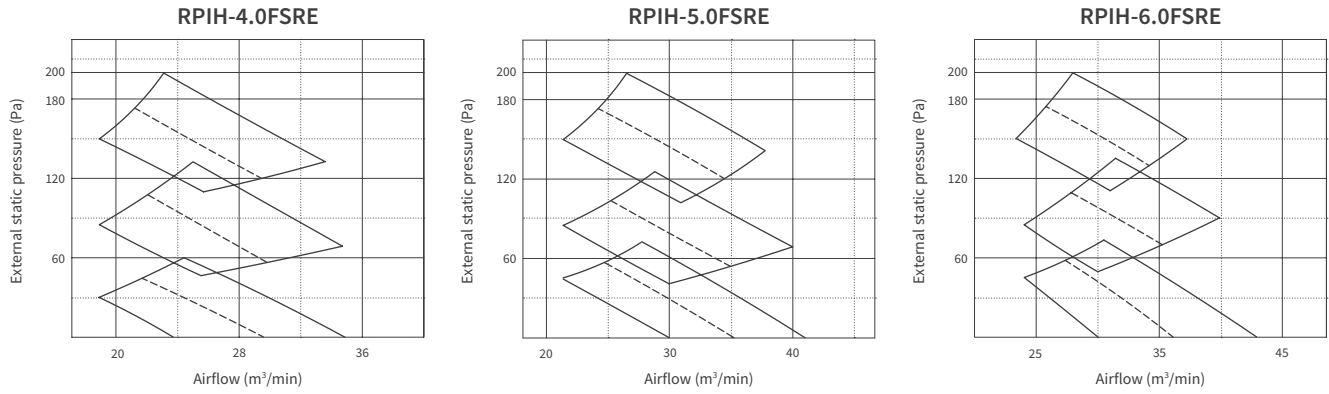
Ducted unit 100 Pa (RPIL-0.4~1.5FSRE)



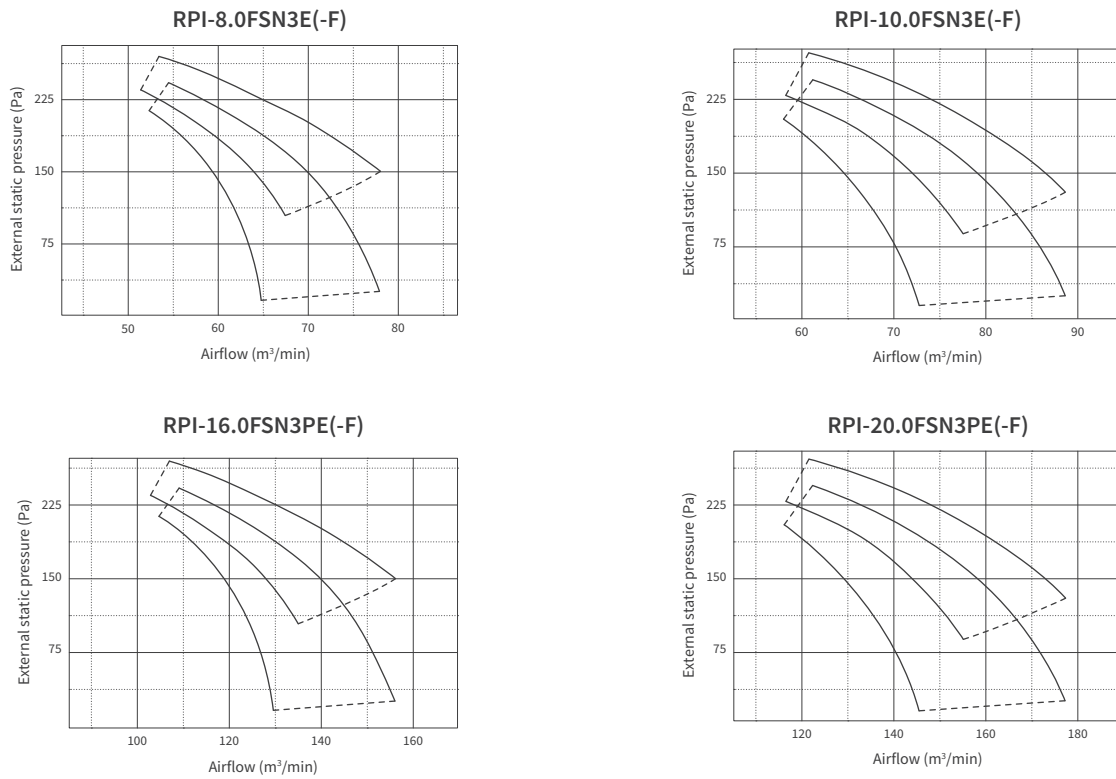
Ducted unit 150 Pa (RPI-1.5~6FSRE)



Ducted unit 200 Pa (RPIH-4~6FSRE)



High-Capacity ducted unit



Wall unit



One of the most extensive ranges on the market: 17 models

With models ranging from 0.4 hp to 4.0 hp, Hitachi offers one of the biggest ranges on the market, with a harmonized design across all models. You can also use the adjustable power settings to respond precisely to each project.

Easy and discreet integration

Our units are so compact and lightweight that you can easily install them discreetly above a doorway. To help with maintenance work, the fan motor on the 2 hp to 4 hp models can be replaced without disassembling the exchanger.

Unrivalled comfort

The "GENTLE COOL" air off temperature setting, accessible on the wired remote control PC-ARFP1E, adjusts the min. air off temperature. In summer, cold air drafts are avoided as you can set the the air off temperature to the maximum setting.

Silent operation

0.4 to 1.5 hp units can be ordered without an expansion valve (version H) to keep the expansion valve apart from the unit (part no. EV-1.5N1 order separately) for even quieter comfort. As such, our units are ideal for hotel use.

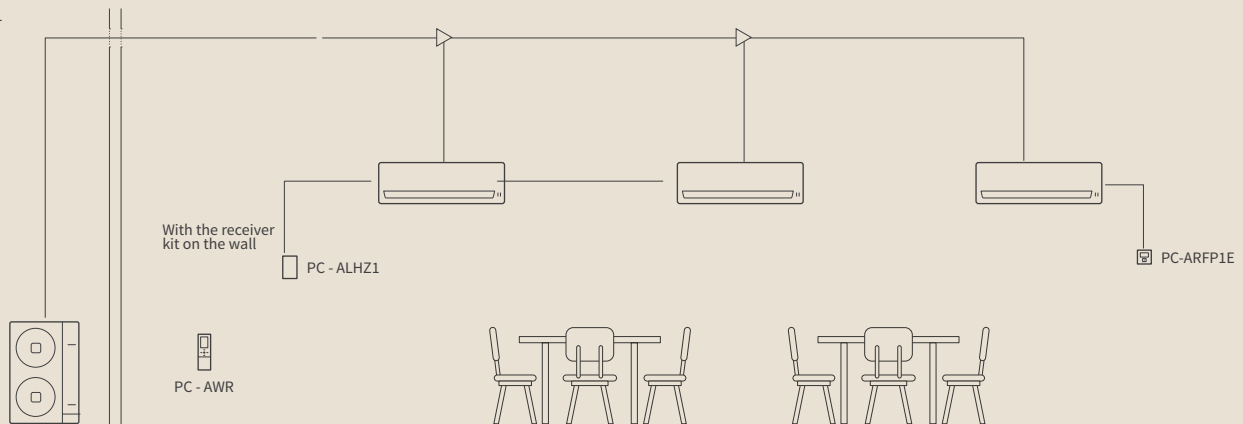
Central control

Our wall units are compatible with all types of remote control and feature an integrated infrared receiver as standard. Available as an option, with the PC-ALHZ1 infrared receiver you can operate multiple units on the same remote control. (Fig.1)

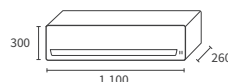
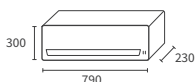
Higher airflow rate

Use the 4 fan speeds to adapt the airflow for comfort in every room.

Fig. 1



Indoor units



RPK-0.4FSRM
 RPK-0.6FSRM
 RPK-0.8FSRM
 RPK-1.0FSRM

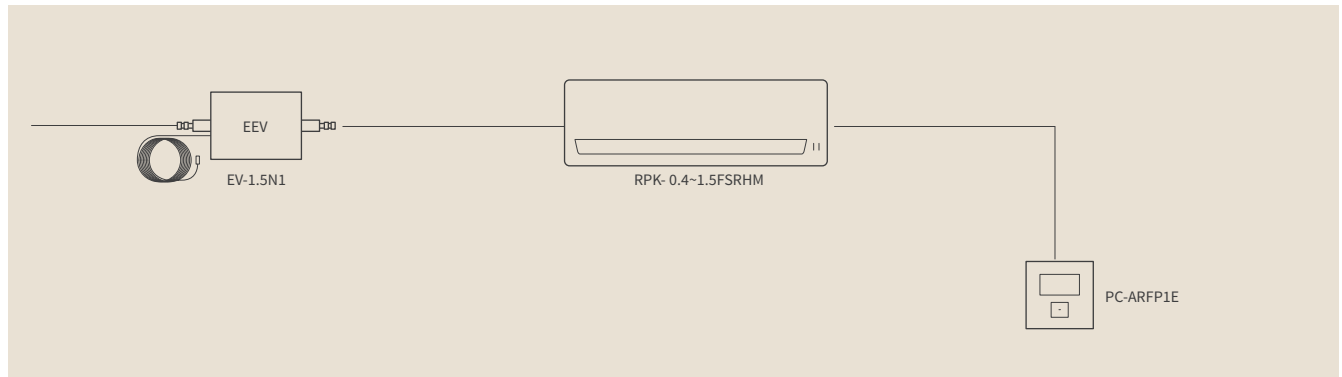
RPK-0.4FSRHM
 RPK-0.6FSRHM
 RPK-0.8FSRHM
 RPK-1.0FSRHM

RPK-1.5FSRM
 RPK-1.5FSRHM

RPK-2.0FSRM
 RPK-2.5FSRM
 RPK-3.0FSRM
 RPK-4.0FSRM


Indoor units	Unit	RPK-0.4FSR(H)M	RPK-0.6FSR(H)M	RPK-0.8FSR(H)M	RPK-1.0FSR(H)M	RPK-1.5FSR(H)M	RPK-2.0FSRM	RPK-2.5FSRM	RPK-3.0FSRM	RPK-4.0FSRM
Power (adjustable)	Hp	0.40	0.60	0.80	1.00 → 1.30	1.50	1.8 → 2.00	2.30 → 2.50	3.00	4.00
Nominal Cooling capacity UTOPIA Prime & IVX	kW	not available	not available	2.00	2.50	3.60	5.00	5.60	7.10	10.00
Nominal Heating capacity UTOPIA Prime & IVX	kW	not available	not available	2.20	2.80	4.00	5.60	6.30	8.00	11.20
Nominal Cooling capacity SET FREE	kW	1.10	1.70	2.20	2.80 → 3.80	4.00	5.20 → 5.60	6.70 → 7.10	8.00	11.20
Nominal Heating capacity SET FREE	kW	1.30	1.90	2.50	3.20 → 4.20	4.80	5.60 → 6.30	7.50 → 8.50	9.00	12.50
Sound pressure in Cooling mode (EL/L/M/H) ⁽¹⁾⁽²⁾	dB(A)	29 / 30 / 31 / 32 29 / 31 / 32 / 35		30 / 32 / 35 / 39		33 / 36 / 40 / 46 31 / 34 / 37 / 40		35 / 38 / 42 / 45 35 / 40 / 44 / 47 39 / 44 / 48 / 51		
Sound power	dB(A)	45-46-48-49		45-47-49-53		47-50-54-58		51-54-58-60		51-56-60-63 54-60-64-65
Airflow in Cooling mode (EL/L/M/H) ⁽⁴⁾	m ³ /h	360 / 402 / 438 360 / 420 / 450 / 480		390 / 420 / 480 / 600		450 / 540 / 660 / 840		570 / 660 / 780 / 870 720 / 840 / 990 / 1110		750 / 930 / 1050 / 1200 870 / 1050 / 1200 / 1380
Condensate pump included	-	No								
Diameter of pipes (Liq / Gas)	inches	1/4 / 1/2						3/8 / 5/8		
Condensate outlet diameter (ext)	mm	20								
Dimensions (H x L x D)	mm	300 x 790 x 230				300 x 900 x 230		300 x 1100 x 260		
Weight	kg	9		10		11		14.5		15
Power supply	-	1~ 230V 50Hz								
Cable width (EN 60 335-1) ⁽³⁾	mm ²	3 x 0.75								
Recommended fuse size	A	5								

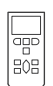
⁽¹⁾ Sound pressure is measured under the following conditions: 1 m under the unit, 1 m from the discharge louvre.
⁽²⁾ Data shown is for indication purposes only. It is the installer's responsibility to ensure that these cable widths meet the needs of the facility and current standards.
⁽³⁾ High-speed access is possible with remote controls PC-ARFP1E and PC-ARH1E.
⁽⁴⁾ Very low speed is available in Thermo-off mode.

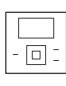



You can have multiple contacts with the connector PCC-1A: progress report, error report, thermostat control, remote "Start/Stop".


Controls and compatible accessories (see the tab VRF TWIN Controls)


- 


Simple wired controller
PC-ARH1E
- 

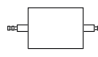
Infrared controller
PC-AWR
- 

Hard wired controller
PC-ARFP1E
(PC-ARFG-E available in 2022)
- 

Connectors
PCC-1A
- 

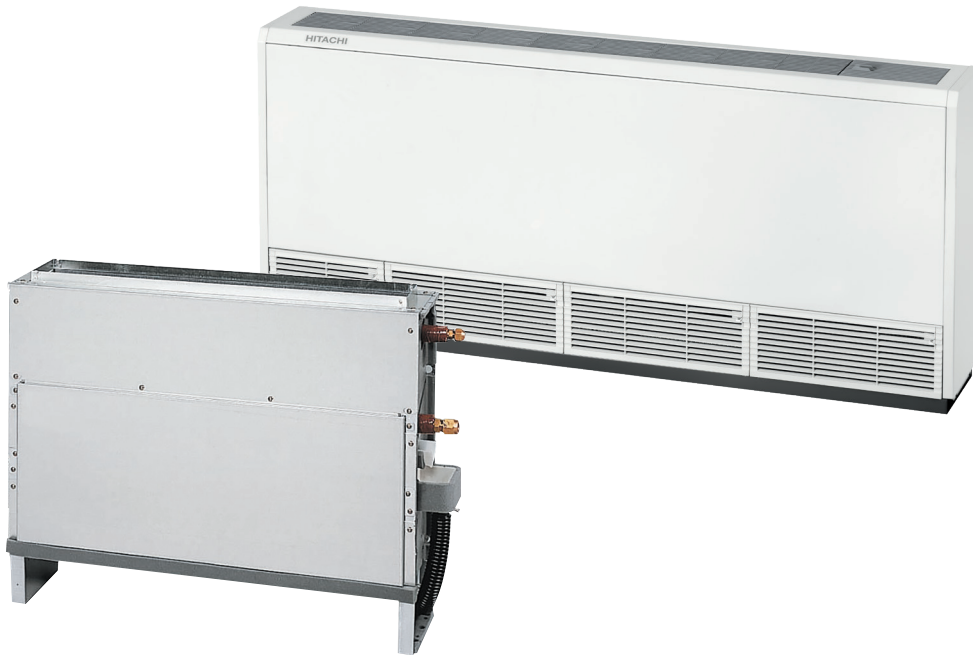
Remote sensor
THM-R2AE
- 

Infrared receiver
PC-ALHZ1 (external)
- 

Multi-tenant card
PC-AMTB
- 

External EEV
EV-1.5N1

Floor mounted



Unrivalled comfort

The GENTLE COOL air off temperature setting, accessible on the wired remote control PC-ARF1E, adjusts the min. air off temperature. In summer, cold air drafts are avoided as you can set the air off temperature to the maximum setting.

Even greater flexibility

To suit any requirement, the console comes in an uncased version (horizontal or vertical blowing) as well as cased. You can also use the adjustable power settings to respond precisely to each project.

Compact design

Just 220 mm deep, uncased units can be installed anywhere on the wall, taking up very little floor space. The 630 mm height makes it an ideal solution for air-conditioning or heating a room.

Integrated remote control

For easier access, the remote control can be integrated into the console itself (Fig.1)

Adapted air circulation

On Hitachi uncased consoles, you can change the blowing direction to suit any need. (Fig.2)

Fig. 1

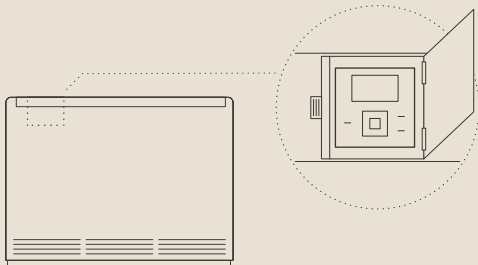
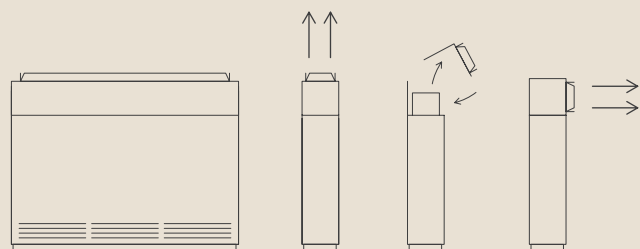
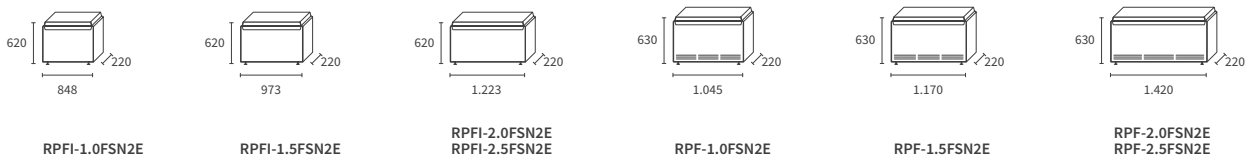


Fig. 2



Indoor units



Floor mounted

Cased console	Unit	RPF-1.0FSN2E	RPF-1.5FSN2E	RPF-2.0FSN2E	RPF-2.5FSN2E
Power (adjustable)	Hp	0.80 – 1.00	1.30 – 1.50	1.80 – 2.00	2.30 – 2.50
Nominal Cooling capacity UTOPIA Prime & IVX	kW	2.50	3.60	5.00	5.60
Nominal Heating capacity UTOPIA Prime & IVX	kW	2.80	4.00	5.60	6.30
Nominal Cooling capacity SET FREE	kW	2.20 – 2.80	3.80 – 4.00	5.20 – 5.60	6.70 – 7.10
Nominal Heating capacity SET FREE	kW	2.50 – 3.20	4.20 – 4.80	5.60 – 6.30	7.50 – 8.50
Sound pressure in Cooling mode (L / M / H) ⁽¹⁾	dB(A)	29 / 32 / 35	31 / 35 / 38	32 / 36 / 39	34 / 38 / 42
Sound power	dB(A)	57		60	
Airflow in Cooling mode (L/M/H)	m ³ /h	360 / 420 / 510	540 / 600 / 720	660 / 840 / 960	
Dehumidification	l/h	1.10	1.60	2.30	2.70
Diameter of pipes (Liq / Gas)	inches	1/4 - 1/2		1/4 - 5/8	3/8 - 5/8
Condensate outlet diameter (ext)	mm	18.50			
Dimensions (H x L x D)	mm	630 x 1045 x 220	630 x 1170 x 220	630 x 1420 x 220	
Weight	kg	25	28	33	34
Power supply	-	1~ 230V 50Hz			
Recommended fuse size	A	5			
Cable width (EN 60 335-1) ⁽²⁾	mm ²	3 x 0.75			

Uncased console	Unit	RPMI-1.0FSN2E	RPMI-1.5FSN2E	RPMI-2.0FSN2E	RPMI-2.5FSN2E
Power (adjustable)	Hp	0.80 – 1.00	1.30 – 1.50	1.80 – 2.00	2.30 – 2.50
Nominal Cooling capacity UTOPIA Prime & IVX	kW	2.50	3.60	5.00	5.60
Nominal Heating capacity UTOPIA Prime & IVX	kW	2.80	4.00	5.60	6.30
Nominal Cooling capacity SET FREE	kW	2.20 – 2.80	3.80 – 4.00	5.20 – 5.60	6.70 – 7.10
Nominal Heating capacity SET FREE	kW	2.50 – 3.20	4.20 – 4.80	5.60 – 6.30	7.50 – 8.50
Sound pressure in Cooling mode (L / M / H) ⁽¹⁾	dB(A)	29 / 32 / 35	31 / 35 / 38	32 / 36 / 39	34 / 38 / 42
Sound power	dB(A)	57		60	
Airflow in Cooling mode (L/M/H)	m ³ /h	360 / 420 / 510	540 / 600 / 720	660 x 840 x 960	
Dehumidification	l/h	1.10		2.30	2.70
Diameter of pipes (Liq / Gas)	inches	1/4 - 1/2		1/4 - 5/8	3/8 x 5/8
Condensate outlet diameter (ext)	mm	18.50			
Dimensions (H x L x D)	mm	620 x 848 x 220	620 x 973 x 220	620 x 1223 x 220	
Weight	kg	19	23	27	28
Power supply	-	1~ 230V 50Hz			
Recommended fuse size	A	5			
Cable width (EN 60 335-1) ⁽²⁾	mm ²	3 x 0.75			

⁽¹⁾ Sound levels (pressure) are measured in an anechoic chamber at 1 m in front of the unit and at 1 m from the floor.
⁽²⁾ Data shown is for indication purposes only. It is the installer's responsibility to ensure that these cable widths meet the needs of the facility.
⁽³⁾ High-speed access is possible with remote controls PC-ARFP1E and PC-ARH1E.

You can have multiple contacts with the connector PCC-1A: progress report, error report, thermostat control, remote "Start/Stop".

Controls and compatible accessories (see the tab VRF TWIN Controls)



Simple wired controller
PC-ARH1E



Infrared controller
PC-AWR



Hard wired controller
PC-ARFP1E
(PC-ARFG-E available second half of 2022)



Connectors
PCC-1A



Remote sensor
THM-R2AE



Infrared receiver
PC-ALHZ1 (external)



Multi-tenant card
PC-AMTB

Ceiling unit



Energy-saving

The motion sensor (optional) automatically optimizes the level of comfort while limiting the energy consumption in rooms only occupied occasionally. It continuously analyzes thermal disparities as well as the presence of people in the room, adjusting its setting temperature (+/- 2°C), fan speed, and airflow direction to suit.

Wide operating ranges

4 fan speeds to suit every need, provide comfort, and make savings.

Flexible implementation

Condensing pumps are offered as an option to provide a high level of installation flexibility.

Unrivalled comfort

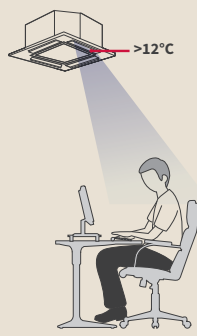
The GENTLE COOL air off temperature setting, accessible on the wired remote control PC-ARFP1E, adjusts the min. air off temperature. In summer, cold air drafts are avoided as you can set the air off temperature to the maximum setting.

Potential for discomfort



GentleCool: OFF

GentleCool → No cold drafts



GentleCool: LOW



GentleCool: MEDIUM



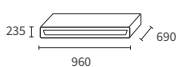
GentleCool: HIGH

Ultimate comfort

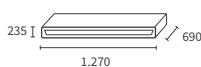


Min. Temp° control on the air off with the remote control PCARFP1E or the CSNET monitoring system

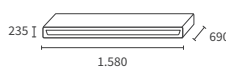
Indoor units



RPC-1.5FSR
RPC-2.0FSR



RPC-2.5FSR
RPC-3.0FSR



RPC-4.0FSR
RPC-5.0FSR
RPC-6.0FSR

Ceiling unit

Indoor units	Unit	RPC-1.5FSR	RPC-2.0FSR	RPC-2.5FSR	RPC-3.0FSR	RPC-4.0FSR	RPC-5.0FSR	RPC-6.0FSR
Power (adjustable)	Hp	1.30 – 1.50	1.80 – 2.00	2.30 – 2.50	3.00	4.00	5.00	6.00
Nominal Cooling capacity UTOPIA Prime & IVX	kW	3.60	5.00	5.60	7.10	10.00	12.50	14.00
Nominal Heating capacity UTOPIA Prime & IVX	kW	4.00	5.60	6.30	8.00	11.20	14.00	16.00
Nominal Cooling capacity SET FREE	kW	3.80 – 4.00	5.20 – 5.60	6.70 – 7.10	8.00	11.20	14.00	16.00
Nominal Heating capacity SET FREE	kW	4.20 – 4.80	5.60 – 6.30	7.50 – 8.50	9.00	12.50	16.00	18.00
Sound pressure in Cooling mode (EL/L/M/H) ⁽¹⁾⁽³⁾	dB(A)	28 / 31 / 35 / 37	28 / 31 / 35 / 38		29 / 33 / 37 / 40	32 / 37 / 42 / 44	35 / 41 / 45 / 48	36 / 42 / 47 / 49
Sound power	dB(A)	53	54	54	56	60	64	65
Airflow in Cooling mode (EL/L/M/H) ⁽⁴⁾	m ³ /h	540 / 660 / 780 / 900		690 / 840 / 990 / 1140	750 / 930 / 1110 / 1260	1020 / 1320 / 1590 / 1800	1200 / 1530 / 1860 / 2100	1260 / 1620 / 1950 / 2220
Condensate pump	-	No (optional accessory)						
Max. elevation	mm	600						
Diameter of pipes (Liq / Gas)	inches	1/4 - 1/2	1/4 - 5/8	3/8 - 5/8				
Condensate outlet diameter (ext)	mm	32						
Dimensions (H x L x D)	mm	235 x 960 x 690		235 x 1270 x 690		235 x 1580 x 690		
Weight	kg	26	27	35		41		
Power supply	-	1~ 230V 50Hz						
Recommended fuse size	A	5						
Cable width (EN 60 335-1) ⁽²⁾	mm ²	3 x 0.75						

⁽¹⁾ Sound levels (pressure) are measured in an anechoic chamber at 1 m under the unit, 1 m from the air louver.

⁽²⁾ Data shown is for indication purposes only. It is the installer's responsibility to ensure that these cable widths meet the needs of the facility.

⁽³⁾ High-speed access is possible with remote controls PC-ARFP1E and PC-ARH1E.

⁽⁴⁾ Very low speed is available in Thermo-off mode.

You can have multiple contacts with the connector PCC-1A: progress report, error report, thermostat control, remote "Start/Stop".

Controls and compatible accessories (see the tab VRF TWIN Controls)



Simple wired controller
PC-ARH1E



Infrared controller
PC-AWR



Hard wired controller
PC-ARFP1E
(PC-ARFG-E available in 2022)



Remote sensor
THM-R2AE



Infrared receiver
PC-ALHP1 (integrated) / PC-ALHZ1 (external)



Multi-tenant card
PC-AMTB



Motion sensor
SOR-NEP



Connectors
PCC-1A



Condensate drainage pump
DUPC-63K1 (extraction pump RPC-1.5FSR)
DUPC-71K1 (extraction pump RPC-2.0FSR)
DUPC-160K1 (extraction pump RPC-(2.5-6.0)FSR)

Hydro Free Low-Temperature

Heating mode only



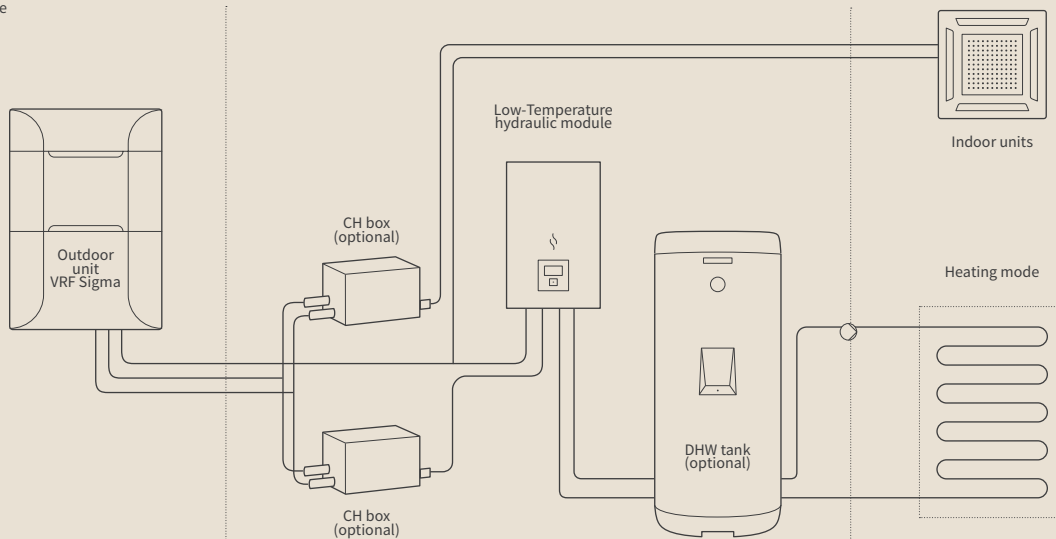
Heating applications

The Hydro Free module (low temperature, 45°C) is compatible with underfloor heating and fan coil units. This solution ensures maximum thermal comfort with the DX/hydraulic combined solution. This compact and ultra-silent module offers the most comfort for renovation projects.

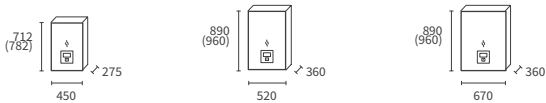
Compactness

A single solution: the VRF installation is made even easier with the Plug-Play system. The module has all the necessary equipment as standard: pump, filter, expansion tank, purges, manometer ...

Setup example



Indoor units



RWLT-3.0VN1E

RWLT-5.0VN1E

RWLT-10.0VN1E

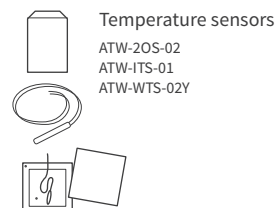
Compatible with outdoor units SET FREE SIGMA: RAS-FSXNSE, RAS-FSXNPE and SET FREE Mini L (8/10/12hp).

Indoor units		Unit	RWLT-3.0VN1E	RWLT-5.0VN1E	RWLT-10.0VN1E
Rated power Heating (7°C outside / 35°C water)		kW	9	16	27
Heating capacity (-7°C outside / 35°C water)		kW	5.5	11.5	17.7
Heating capacity (-7°C outside / 45°C water)		kW	5.2	11.1	15.61
Sound power		dB(A)	37	39	47
Net weight		kg	35	50	62
Unit dimensions	Height (with connections)	mm	712 (782)	890 (960)	890 (960)
	Width	mm	450	520	670
	Depth	mm	275	360	360
Water flow	Nominal	m ³ /h	1.5	2.7	4.7
Min. system water capacity		L	100	150	180
Power supply		-	1~ 230V 50Hz		
Max. consumption		kW	0.05	0.08	0.14
Refrigeration connection type		-	Flare nut	Flare nut	Liq: Flare nut - Gas: Brazed
Diameter of pipes (Liq - Gas)		inches	3/8" - 5/8"	3/8" - 5/8"	3/8" - 7/8"
Hydraulic connections (male/male valves supplied)		inches	1"	1 - 1/4"	1 - 1/4"
Hydrofree connection rate		-	0 ~ 100%		
Min. overall index of DX* units		-	50%		
General connection rate of Hydrofree + DX units	2-pipe VRF*	-	50% ~ 130%		
	3-pipe VRF*(2)	-	RAS-FSXNSE: 50% ~ 150%		
		-	RAS-FSXNPE: 50% ~ 200%		
Max. number of indoor units with Hydrofree installed (1)		-	38		
Temperature range of water outlet in heating mode		-	20°C ~ 45°C		

* Important: simultaneous operation can never be higher than 100% in heat pump mode.
 Simultaneous operation in the same mode can never exceed 100% for a VRF system in heat recovery mode.
 (1) The maximum number of indoor units is the recommended quantity of indoor units for every size of outdoor unit. For more information, please refer to the technical catalog of the outdoor unit.
 (2) See Section 9.5.2.2 "Function of DIP switches and dial switches" in the technical catalog for more information on Pin 3 of the DSW8 with a connection rate of > 180%.

You can have multiple contacts with the connector PCC-1A: progress report, error report, thermostat control, remote "Start/Stop".

Controls and compatible accessories (see page 48)



Hydro Free High-Temperature

Heating mode only



For a variety of applications

- High-temperature heating: combined with the VRF Sigma or SET FREE Mini 2/3-pipe.
- Constant DHW production: combined with the VRF Sigma or 3-pipe SET FREE Mini.
- Timed DHW production: combined with the VRF Sigma or 3-pipe SET FREE Mini.

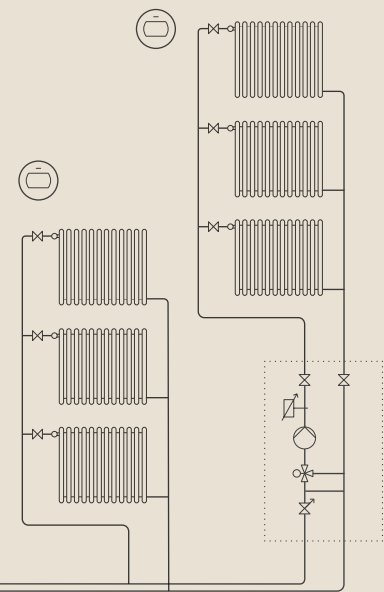
The Hydro Free high-temperature system is ideal for high-temperature hot water needs for renovation projects, as heat is recovered via the CH box on indoor units operating in cooling mode.

2-in-1 system

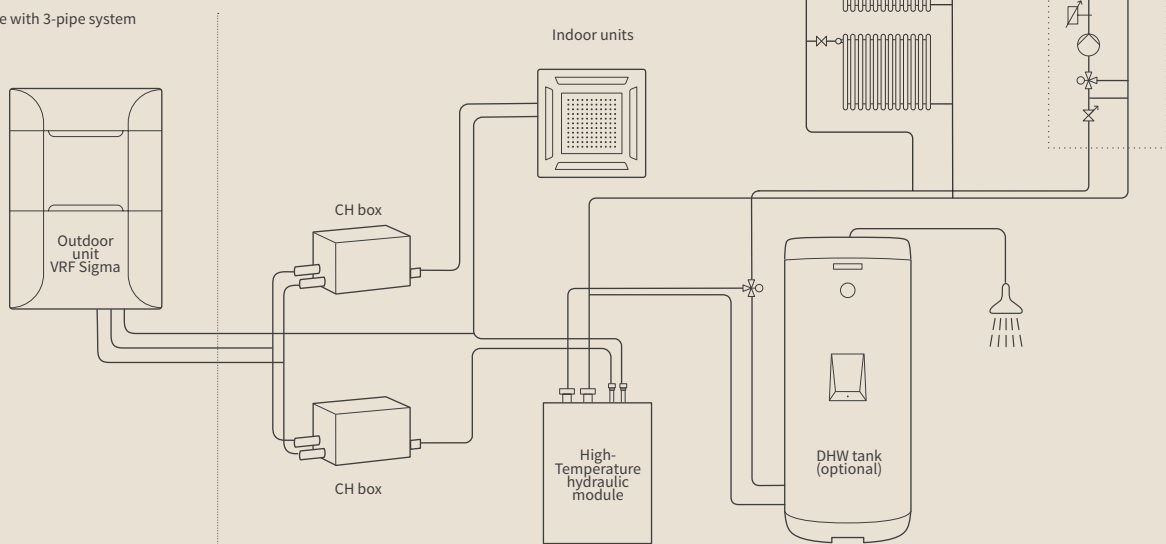
A single unit to meet 2 needs: **heating and DHW**. The High-Temperature Hydro Free system produces hot water up to 80°C from renewable energy (no anti-legionella cycle required).

Smart operation

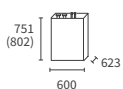
High-Temperature Hydro Free models are equipped with 2 compressors operating on a smart cascading system, and 2 refrigeration cycles (R-410A and R-134A): the second cycle occurs only if the inlet temperature is greater than or equal to 30°C or when the outlet temperature is greater than or equal to 45°C.



Setup example with 3-pipe system



Indoor units



RWHT-5.0VNF1E

Indoor units		Unit	RWHT-5.0VNF1E
Rated power Heating (7°C outside / 35°C water)		kW	16
Heating capacity (-7°C outside / 65°C water)		kW	13.9
Heating capacity (-7°C outside / 80°C water)		kW	12.4
Sound power		dB(A)	57
Net weight		kg	129
Unit dimensions	Height (with connections)	mm	751(802)
	Width	mm	600
	Depth	mm	623
Water flow	Nominal	m ³ /h	2.8
Min. system water capacity		L	80
Power supply		-	1~ 230V 50Hz
Max. consumption		kW	6.23
Refrigeration connection type		-	Flare nut
Diameter of pipes (Liq - Gas)		inches	3/8" - 5/8"
Hydraulic connections (male/male valves supplied)		inches	1-1/4" - 1-1/4"
Refrigerant		-	R134A
Compressor		-	Scroll
Hydro free connection rate		-	0 ~ 100%
Total ratio of DX when installed with Hydro free*		-	50% ~ 130%
Total connection rate Hydrofree + DX	2-pipe* VRF	-	50% ~ 130%
	3-pipe* VRF	-	RAS-FSXNSE: 50% ~ 150%
		-	RAS-FSXNPE: 50% ~ 200%
Max. number of indoor units with HM installed		-	38
Max. temperature range of water outlet		-	25°C ~ 80°C
Remote control		-	PC-ARFWE (mounted locally)

* Important: simultaneous operation can never be higher than 100% in heat pump mode.
 Simultaneous operation in the same mode can never exceed 100% for a heat recovery system.
 (1 *) The maximum number of indoor units is the recommended quantity of indoor units for every size of outdoor unit. For more information, please refer to the technical catalog of the outdoor unit.
 (* 2) See Section "9.5.2.2 Function of DIP switches and dial switches" for more information on Pin 3 of the DSW8 with a connection rate of > 180%.

You can have multiple contacts with the PCC-1A connector: progress report, error report, thermostat control, remote "Start/Stop".

Controls and compatible accessories (see page 60)

