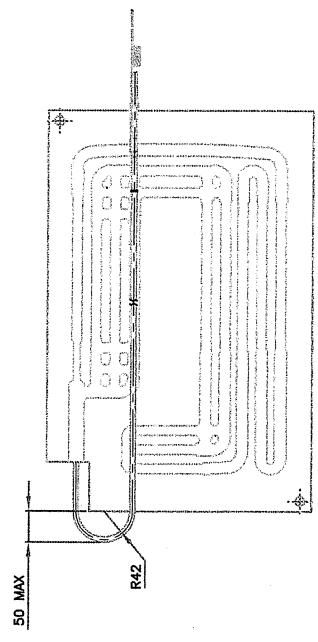
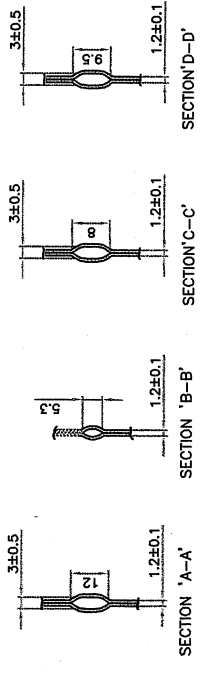
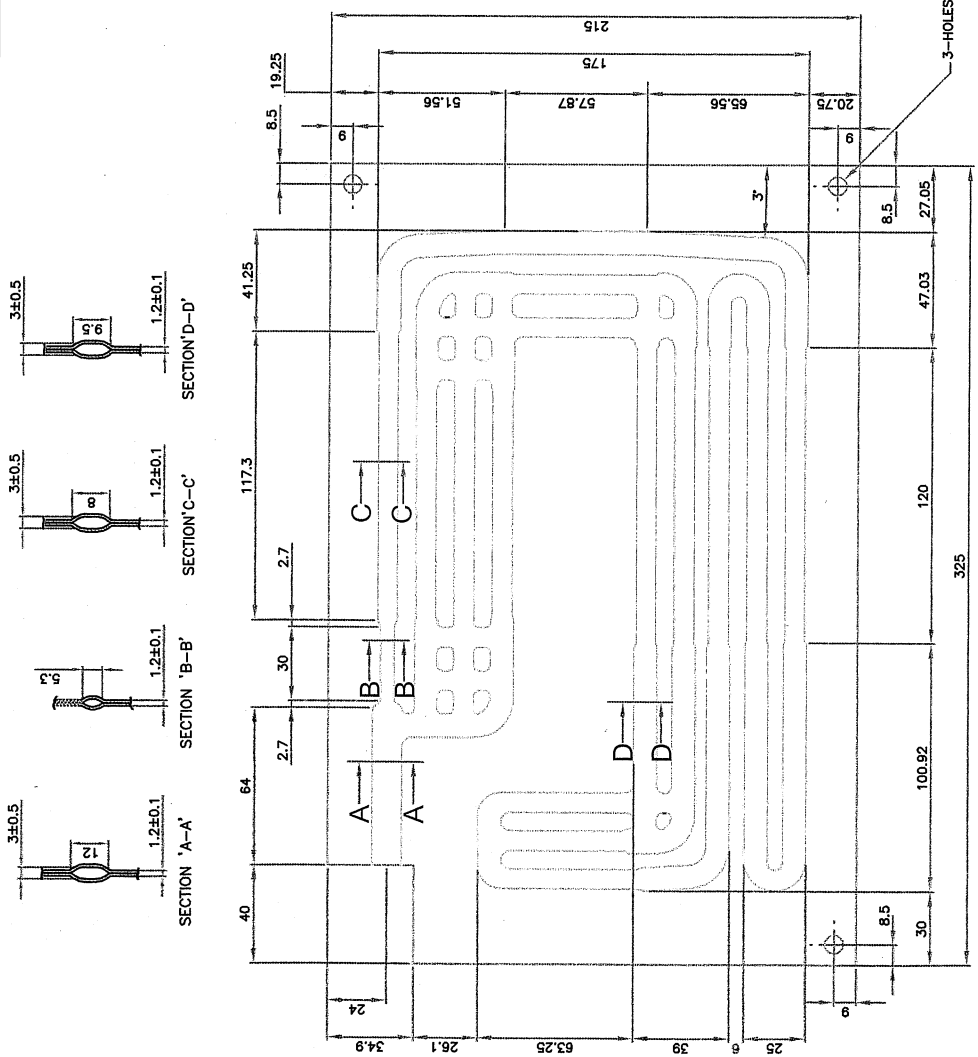


REV	DATE	DESCRIPTION
1	21.11.97	ISSUE FOR PRODUCTION
2	13.11.98	REVISION TO DRAWING TO ACCORD WITH THE LATEST ISSUE OF BS EN 10204
3	13.11.98	REVISION TO DRAWING TO ACCORD WITH THE LATEST ISSUE OF BS EN 10204

- Flow-Rates are measured in litres per min at
- 50psig-offer coiling
 - Burst Pressure : 40 bar (minimum)
 - Leak Test : 8 bar
 - Residues - Soluble : 40mg/m² (max)
Insoluble : 60mg/m² (max)

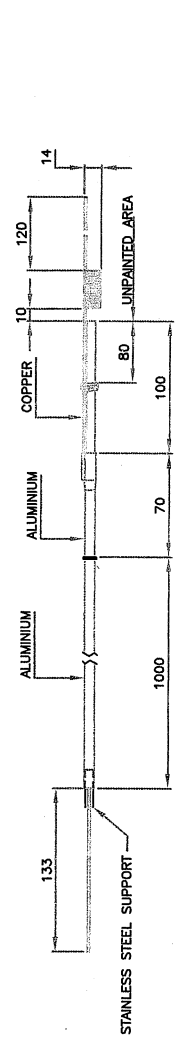
NOTE:-
 DEHYDRATE TO 10ppm WATER
 SUCTION LINE TO BE CAPPED
 CAPILLARY TO BE BRAZE SEALED OR CAPPED
 LAST 80mm. OF SUCTION LINE AND ALL
 OF CAPILLARY TO BE LEFT UNPAINTED
 AND UNTREATED

- Point Specifications
- Salt Spray Test - 600hr. Min (estm b117-97)
 - Humidity Test - 1000hr. Min (ASTM D714-87 rev.2000)
 - Adherence - 95% min. (ASTM D3359-97)
 - Bend Test - No cracking on 2t bending radius (ASTM D93c)



Hawco Ltd.
 The Wharf
 Abbey Mill Business Park,
 Surrey GU17 2SN, England
 Tel: +44(0)1483 868000
 Fax: +44(0)1483 868001

TITLE :	EVAPORATOR PLATE
MADES :	
MATERIAL :	
SURFACE FINISH :	PAINT
COLOR :	
THIS DRAWING IS FOR-	THIRD ANGLE PROJECTION
PRODUCTION	UNLESS OTHERWISE SPECIFIED
DO NOT SCALE	THIS DRAWING IS THE PROPERTY OF HAWCO LTD. IS PRIVATE AND CONFIDENTIAL AND MUST NOT BE COPIED OR SHOWN TO A THIRD PARTY WITHOUT AUTHORIZATION.
DRG. L.A.B	SCALE TO PRINT 1:2
CHKD	SKT SIZE A0
DATE 09.05.07	DRG.No.
APP'D	ROLLBOND 325X215
	3



SUCTION LINE

SUCTION LINE DETAILS							
	COPPER/ALUMINIUM	CAPILLARY LENGTH (mm)	CAPILLARY SIZE (mm)	FLOWRATE VOLUME (±5%)	AREA (mm ²)	BASIC PLATE SIZE (DIMS lin mm)	WEIGHT (Kg.)
COPPER	COPPER/ALUMINIUM	1525	0.88 id x 1.8 od	2.8±0.1 L/min	66850	325 X 215	
Tube-6mm od (mm)	connector Tube-8mm od (mm)	1070	Total length-8mm od (mm)				
100	70						