

Matrix

WALK-IN COLD ROOMS



CATALOGUE



ColdKit
A Purever Company

ColdKit

ColdKit is part of the NG Purever Group, a worldwide supplier of catering refrigeration equipment for hotels, restaurants and the food industry.

ColdKit provides top-quality, innovative products, delivered efficiently through a **large network of Distribution Centres**.

ColdKit products are prepared to meet any refrigeration need and work in severe or protected environments.

ColdKit's corporative philosophy is based on a few basic concepts:

- Advanced technology, due to persistent investments in R&D.
- A perfect combination of a well-conceived design and highly functional product.
- Support configuration systems and modular products.
- An extensive distributor network deeply committed offering the best service available.



EXPERIENCE AND QUALITY

SOLID EXPERIENCE, WORLD-CLASS REFERENCES

ColdKit offers highly professional refrigeration products and solutions for the catering and agro-food businesses.

Outstanding institutions, organisations and companies all over the world have chosen **ColdKit** products. For example ColdKit is proud to have supplied walk-in coldrooms for the Athens Olympic Games 2004.

QUALITY AND PROFESSIONALISM

ColdKit offer a vast range of product and solutions to a large variety of markets.

The company works hard to build its reputation for quality and commitment.

ColdKit **Technical Departments** are well prepared to support customers in their search for the most adequate **professional solutions** with the guarantee of the best insulation and operating efficiency.

CLIENT ORIENTED

ColdKit centers all its efforts on providing its customers with competitive, flexible and high-quality solutions.

ColdKit's products and solutions contribute effectively to food preservation in all stages of the supply chain, including processing, warehousing and distribution. An excellent example of ColdKit's commitment to both its customers and its philosophy is the new **MATRIX** modular walk-in coldroom.

BROAD PRODUCT RANGE

ColdKit solutions are also based on a broad range of products:

- Modular walk-in coldrooms
- Insulation doors
- Shelving
- Industrial insulation sandwich panels
- Garbage coolers

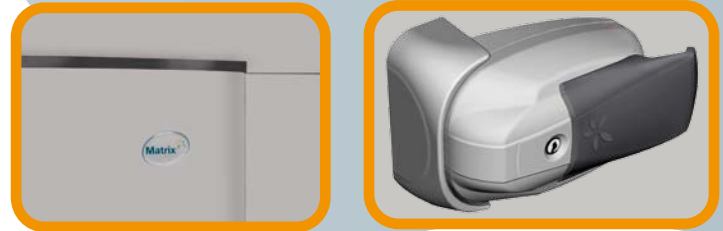
¿What is Matrix?

Matrix is an innovative full range of modular walk-in coldrooms with significant advantages over conventional coldrooms.

Matrix is the result of an R&D project involving experienced professionals from various different countries.

It provides optimal options for storing food in **hotels, restaurants, catering services, supermarkets** and **industrial kitchens**, among others.

- Complete modularity in 20 by 20
- Exclusive design
- Easy assembly
- Plain gray exterior and white interior
- Rounded corners
- Unlimited combinations



PANELS

The **Matrix** range consists of four thicknesses (60, 85, 105 and 150mm) with different insulations for different applications.

The result is a perfect balance between adequate cold storage and power consumption.

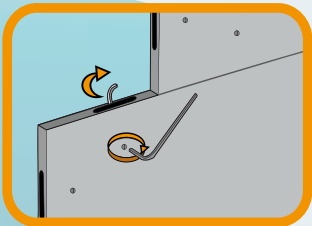
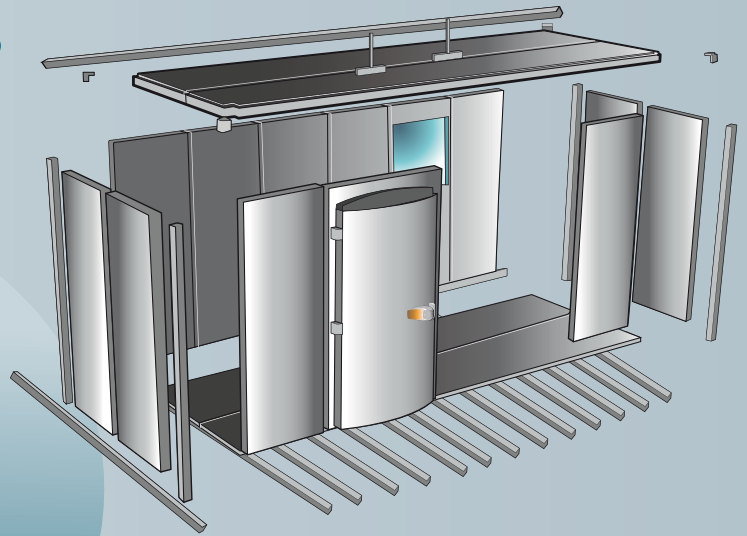
KEY FEATURES DIFFERENTIATING MATRIX FROM OTHER SIMILAR PRODUCTS

UNLIMITED COMBINATIONS

Matrix was conceived to be adaptable to almost any situation and configuration.

Unlimited combination and configurations are possible thanks to the MATRIX architecture based on modules that can be extended in 20cm increments in all three dimensions (height, width and depth).

The MATRIX modular concept also applies to a well achieved, easy to assemble partition system, allowing one coldroom to be split into different areas for different products and temperature environments, according to the specific needs of each customer and usage.



EASY ASSEMBLY

Due to its modern kit architecture, MATRIX coldrooms are very easily assembled, in a surprisingly short time. They can be set up from within which maximizes usage of the room area and ceiling. The assembly process is totally clean, simple and requires no cuts in the panels.

In a short period of time the new coldroom is ready for operation without interfering with the activities in the surrounding areas.

The MATRIX coldroom is assembled by interlocking a cam and a pin from plastic boxes inserted with precision inside each modular element.

The combination of these two features gives the MATRIX range three key advantages:

- Maximum usage of the space available for the coldroom
- The possibility to easily dismantle the coldroom and move it to a different location
- The coldroom can easily be expanded or its configuration can be modified without turning it off or removing the stored goods

EXCLUSIVE DESIGN

A quick glance at a MATRIX coldroom is sufficient to appreciate its new, improved design.

Its most noticeable are:

- **Soft Door:** A symbol of its modern design and a symbol of the brand.

- **Stainless steel colour:** MATRIX puts an end to monotonous white coldrooms.

The smooth, carefully finished modules have an elegant grey exteriors and a clean white interior.

- **Rounded Corners:** All corners are rounded inside and outside. Components are made with high-quality, durable, easy to clean materials.



Positive door



Negative door



INOX
AISI304



GREY
RAL 9006



WHITE
RAL 9002



Internal joining
profile



External joining
profile



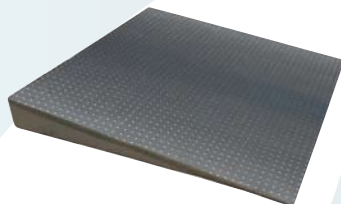
Coving section



Shelving



Monobloc
unit



Ramps

A FULL RANGE OF OPTIONS & ACCESSORIES

A variety of accessories are available as well, such as floor skirting, coving sections, silicon sealants, pressure balancing valves, lighting, temperature control, and access ramps, among others.

All accessories meet food-industry hygiene standards and are certified by **CNERPAC**.



Strip
curtains



Panels with
windows



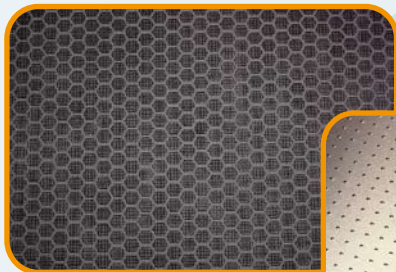
Pressure balancing
valve

DOORS

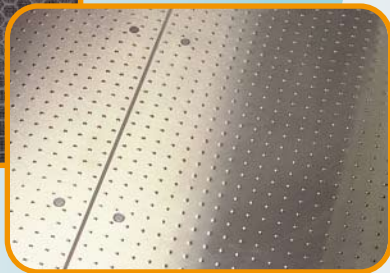
With the same modular architecture and the same simple assembly process, MATRIX offers a wide range of doors in many dimensions: sliding, swinging and hinged doors, as well as glass display doors, windows and strip doors.



FLOOR PANELS DETAILS



PHENOLIC RESIN



STAINLESS STEEL

FLOORS

MATRIX can be supplied in a wide range of antislip floors that make it adaptable to different loads, including intensive forklift truck traffic.

The standard floor has a phenolic resin finish, although top-quality stainless steel floors are also available.

ENVIRONMENTAL RESPONSIBILITY

Environmental responsibility is no longer simply a business image strategy. Today it is as important as other economic and social sectors, when evaluating profit accounts and the company's position in the market.

ColdKit contributes to sustainable development and acknowledges that this contribution generates confidence for customers, the market and the company in general.

Therefore ColdKit has implemented significant work in the field of R&D, and a notable investment in non-polluting technology, which enables it to comply with the Kyoto protocol.



EFFICIENT LOGISTICS

Due to the **MATRIX** modular architecture ColdKit has been able to build up a decentralised European distribution network, which makes it easy to fill all of its customers' orders quickly and efficiently with reduced transportation costs.



ColdKit favours the further development of its international distribution network with the firm commitment to provide its partners with professional technical and marketing tools and competitive price-quality ratio products, to become over the next few years an international leader in the supply of walk-in coldrooms.



ColdKit

A Purever Company

“Protecting What Matters Most”™

ColdKit is part of the Purever Group, manufacturing a wide range of products related to insulation and cooling. Purever currently has a presence in 24 countries in 5 continents.

Today, ColdKit is consolidated as a leading company in the sector, where it is noted for its **COMMITMENT TO CUSTOMERS, TECHNOLOGICAL INNOVATION AND DESIGN.**

Part of a Group with clear international vocation, ColdKit has its head office in Madrid and branches across Europe, South America and Asia.

It has dedicated and highly professional partners united by the common will to work to serve their customers as effectively and efficiently as possible.

UNITED KINGDOM

COLDKIT UK

Kingsland Business Park
Unit 9 Bilton Road, Basingstoke
Hampshire RG24 8LJ

Tel.: +44 01256 811 400
Fax: +44 01256 810 200

wquail@coldkit.com

HEADQUARTERS

COLDKIT S.L.U.

C/ Mario Roso de Luna, 33-35. Nave 8
P.I. Fin de Semana
28022 Madrid-ESPAÑA

T +34 913 120 644
F +34 917 480 535

info@coldkit.com

www.coldkit.com

