



NEW
FROM HAWCO

- WRAS approved
- Wide range to suit many applications
- Proven design, quality & reliability
- Direct replacement for all major brands
- Bespoke design available
- Full advice and aftersales service

Pressure *Switches*

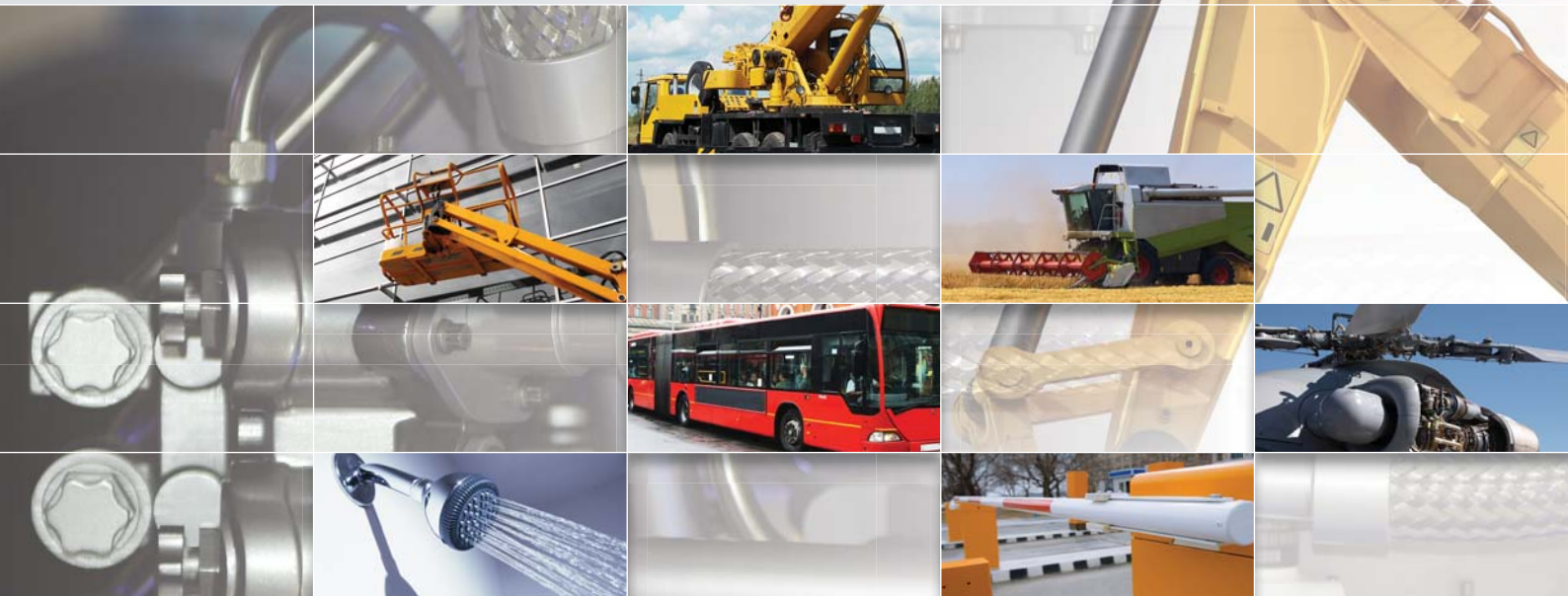
0.21 to 413bar

For low or high pressure hydraulic, pneumatic and water applications.

Typical applications include:

- Cherry pickers • Braking system control • Fork lift trucks • Cranes • Agricultural machinery • Industrial water pumps
- Shower water pumps • Street sweepers • Automatic barriers • Pneumatic tyre pressure indicators • OEM applications

■ Contact us for information on our range of transducers.





Pressures and typical use:

- SPA** Low pressure - pneumatic applications
- SMA** High pressure - hydraulic applications
- SVA** Low pressure - pneumatic applications
- DSPA** Low pressure - water applications
- SKBA** Compact switch - OEM applications
- SDCA** Higher pressure - hydraulic applications
- SWA** Low pressure - water applications

*Dimensions are ± 1mm.

SPA / SPF



The SPA series features a micro switch for SPDT settings. It has a diaphragm seal that can be easily field adjusted.

Range of port thread sizes and electrical termination options.

Adjustment Ranges	0.21 to 10.3 bar (3 - 150 PSI)
Switch Type	Snap Action
Electrical	5A 12/24 VDC, 125 VAC, 3A 250 VAC
Temperature Range	-20°F to 180°F (-29°C to 82°C)
Mechanical Range	1,000,000 operations @ 75 PSI
Diaphragm Material	Nitrile, Viton, EPDM
Maximum Overpressure	25 bar (350 PSI)
Repeatability	+/-2% of full set point
Pressure Connection	1/8 NPT, 1/4 NPT, 1/8 BSPP, 1/4 BSPP, 7/16-20 SAE
Dimensions	51mm (2") H. 29mm (1.15") W.

SMA / SMF



The SMA series features a micro switch for SPDT settings. It has a diaphragm and piston seal that can be easily field adjusted.

Range of port thread sizes and electrical termination options.

Adjustment Ranges	2.1 to 344.8 bar (30 - 5000 PSI)
Switch Type	Snap Action
Electrical	5A 12/24 VDC, 125 VAC, 3A 250 VAC
Temperature Range	-20°F to 180°F (-29°C to 82°C)
Mechanical Range	1,000,000 operations @ 1,000 PSI
Diaphragm Material	Nitrile, Viton, EPDM
Maximum Overpressure	600 bar (9000 PSI)
Repeatability	+/-2% of full set point
Pressure Connection	1/8 NPT, 1/4 NPT, 1/8 BSPP, 1/4 BSPP, 7/16-20 SAE
Dimensions	61mm (2.4") H. 29mm (1.15") W.

SVA / SVF



The SVA series features a micro switch for SPDT settings. It has a diaphragm seal that can be easily field adjusted.

Range of port thread sizes and electrical termination options.

Adjustment Ranges	160 to 1000 mbar (5 - 30" Hg)
Switch Type	Snap Action
Electrical	5A 12/24 VDC, 125 VAC, 3A 250 VAC
Temperature Range	-20°F to 180°F (-29°C to 82°C)
Mechanical Range	1,000,000 operations @ 25 IN HG
Diaphragm Material	Nitrile, Viton, EPDM
Maximum Overpressure	25 bar (350 PSI)
Repeatability	+/-2% of full set point
Pressure Connection	1/8 NPT, 1/4 NPT, 1/8 BSPP, 1/4 BSPP, 7/16-20 SAE
Dimensions	51mm (2") H. 29mm (1.15") W.

DSPA / DSPF



The DSPA series is a differential switch that features a micro switch for SPDT settings.

It has a diaphragm and piston seal that can be easily field adjusted.

Adjustment Ranges	0.69 to 4.14 bar (10 - 60 PSI)
Switch Type	Snap Action
Electrical	5A 12/24 VDC, 125 VAC, 3A 250 VAC
Temperature Range	-20°F to 180°F (-29°C to 82°C)
Mechanical Range	1,000,000 operations @ 75 PSI
Diaphragm Material	Nitrile, Viton, EPDM
Maximum Overpressure	35 bar (500 PSI)
Repeatability	+/-2% of full set point
Pressure Connection	1/8 NPT, 1/4 NPT, 1/8 BSPP, 1/4 BSPP, 7/16-20 SAE
Dimensions	102mm (4") L. 32mm (1.25") H. 32mm (1.25") W.

SKBA / SKBF



The SKBA series is ideal for OEM purposes. It features a diaphragm and piston design with blade contact for SPST option.

Compact and economical. Range of port thread sizes and electrical termination options.

Adjustment Ranges	0.35 - 206.9 bar (5 - 3000 PSI)
Switch Type	Creep Action
Electrical	42 VDC
Temperature Range	-20°F to 180°F (-29°C to 82°C)
Mechanical Range	1,000,000 operations @ 1,000 PSI
Diaphragm Material	Nitrile, Viton, EPDM
Maximum Overpressure	600 bar (9000 PSI)
Repeatability	+/-3% of full set point
Pressure Connection	1/8 NPT, 1/4 NPT, 1/8 BSPP, 1/4 BSPP, 7/16-20 SAE
Dimensions	44mm (1.75") H. 24mm (0.95") W.

SDCA / SDCF



The SDCA series is ideal for robust applications. It features metal contact surfaces for high pressure surges and high over pressure.

Adjustment Ranges	3.45 - 413 bar (50 - 6000 PSI)
Switch Type	Snap Action
Electrical	5A 12/24 VDC, 125 VAC, 3A 250 VAC
Temperature Range	-20°F to 180°F (-29°C to 82°C)
Mechanical Range	1,000,000 operations @ 1,000 PSI
Diaphragm Material	Nitrile, Viton, EPDM
Maximum Overpressure	827 bar (12000 PSI)
Repeatability	+/-2% of full set point
Pressure Connection	1/4 NPT, 1/4 BSPP, 7/16-20 SAE
Dimensions	76mm (3") H. 51mm (2") W. without the mating HC

SWA / SWF



The SWA series is ideal for low pressure water applications. It has a compact style body that is suitable when space is limited.

Range of port thread sizes and electrical termination options.

Adjustment Ranges	0.5 - 4.5 bar (7 - 65 PSI)
Switch Type	Snap Action
Electrical	5A 12/24 VDC, 125 VAC, 3A 250 VAC
Temperature Range	-20°F to 180°F (-29°C to 82°C)
Mechanical Range	CONSULT FACTORY
Diaphragm Material	Nitrile, Viton, EPDM
Maximum Overpressure	17 bar (250 PSI)
Repeatability	+/-2% of full set point
Pressure Connection	1/8 NPT, 1/4 NPT, 1/8 BSPP, 1/4 BSPP, 7/16-20 SAE
Dimensions	71mm (2.8") H. 32mm (1.25") W.