

**COMPRESSOR**

Displacement (cm <sup>3</sup> )	4.06
Diameter (mm)	19.5
Stroke (mm)	13.6
Net Weight (Kg)	6.7
Oil type	ISO VG 22 ESTER
Oil charge (cm <sup>3</sup> )	200

**MOTOR**

Approximate Power (CV)	1/8
Voltage/Frequency (V/Hz)	220V 50Hz
Voltage range (V)	198-264
Code	70.018
Type	CSIR
Phase number	1 PH
Locked rotor current (A)	5.6
Main W. resist. at 25°C (Ω)	18.76
Start W. resist. at 25°C (Ω)	19.48

**APPLICATION**

Application	High/Mid. back pressure
Refrigerant	R134a
Evaporating (°C)	-25 to 10
Expansion	Capillar/Valve
Comp. cooling	Fan cooled
Max. ambient temp. (°C)	43

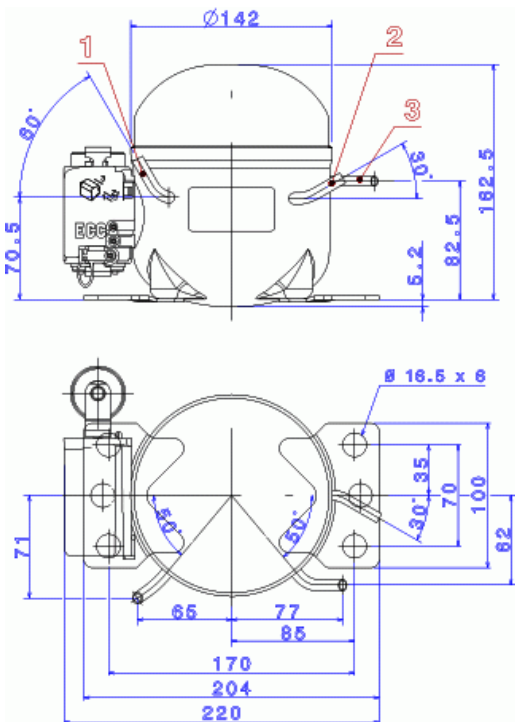
NOMINAL PERFORMANCE	CYCLE C	CYCLE D
Cooling capacity (kcal/h)	259	310
Input power (W)	193	200
EER (kcal/Wh)	1.34	1.55
COP (W/W)	1.56	1.80
Current (A)	1.18	1.21

**TEST CONDITIONS**

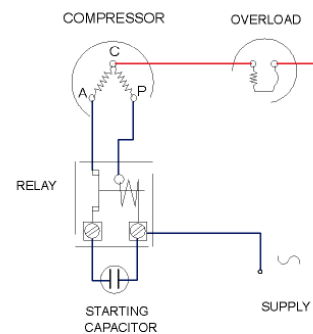
Evaporating temp. (°C)	5.0	7.2
Condensing temp. (°C)	55.0	55.0
Liq.t. entering expan. (°C)	55.0	46.0
Ambient t. and return (°C)	32.0	35.0
Tens/Freq (V/Hz)	220V 50Hz	220V 50Hz

**ELECTRICAL COMPONENTS**

Relay	2014 098.		
Pick-Up (A)	2,20		
Drop-Out (A)	1,85		
Protector	MRP346HV	T0067	AE18BY
Current (A)	6.4	6.6	6.5
Time check (seg)	7.5-14	7.5-14	7.5-14
Disc temp. (Open/Close) (°C)	105.0 / 78.0	105.0 / 62.0	105.0 / 62.0
Starting capacitor (μF/V)/FV)	47- 56 / 330		

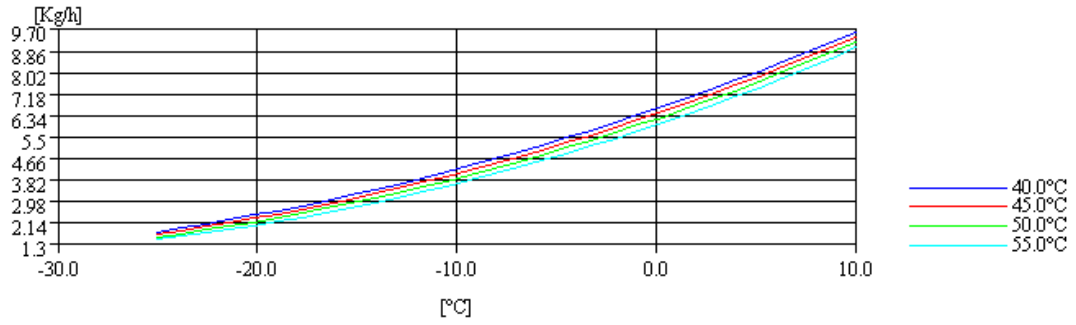
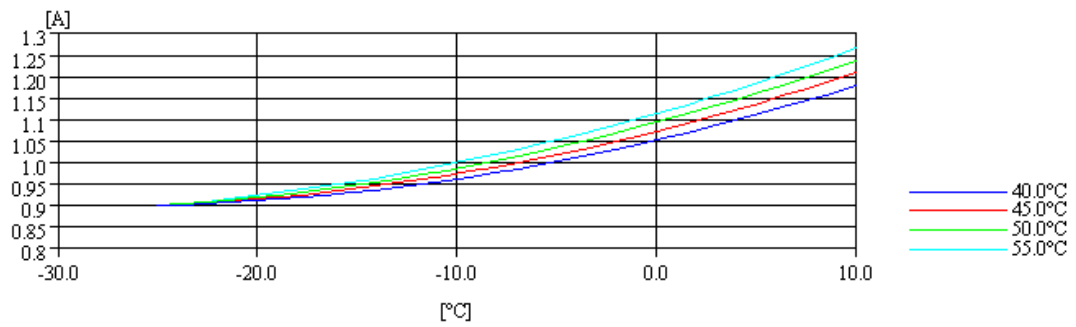
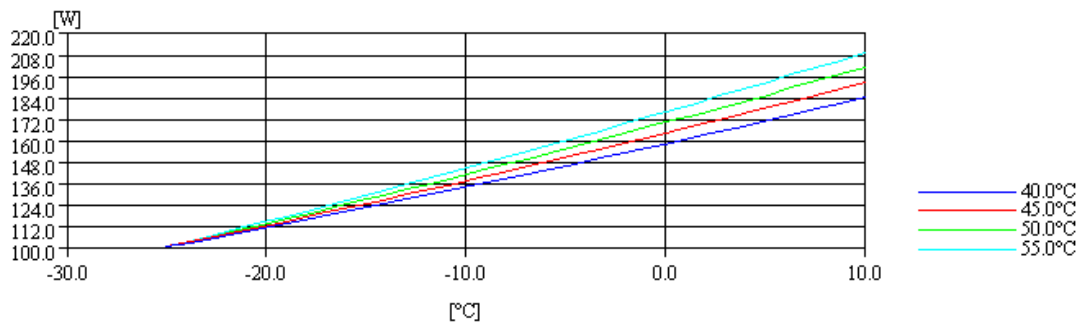
**DIMENSIONS AND ELECTRICAL DIAGRAM**


DESIGNATION	INTERNAL DIAM. (MM)
1 Suction/Service	6,5
2 Service/Suction	6,5
3 Discharge	4,9

**CSIR**


**TEST CONDITIONS**

Voltage/frequency	220V 50Hz
Ambient t. and return	35 °C
Liq.t. entering expan.	Subcooling 9 K

**MASS FLOW**

**INTENSITY**

**CONSUMPTION**

**COOLING CAPACITY**
