

COMPRESSOR

Displacement (cm ³)	3.62
Diameter (mm)	19.5
Stroke (mm)	12.1
Net Weight (Kg)	5.9
Oil type	ISO VG 22 ESTER
Oil charge (cm ³)	200

MOTOR

Approximate Power (CV)	1/12
Voltage/Frequency (V/Hz)	220V 50Hz
Voltage range (V)	187-264
Code	70.014
Type	RSIR
Phase number	1 PH
Locked rotor current (A)	6.9
Main W. resist. at 25°C (Ω)	31.51
Start W. resist. at 25°C (Ω)	25.8

APPLICATION

Application	Low back pressure
Refrigerant	R134a
Evaporating (°C)	-35 to -10
Expansion	Capillar
Comp. cooling	Static
Max. ambient temp. (°C)	43

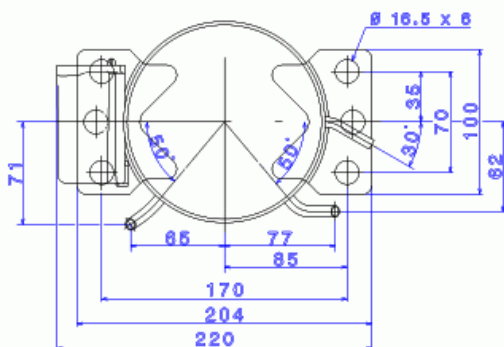
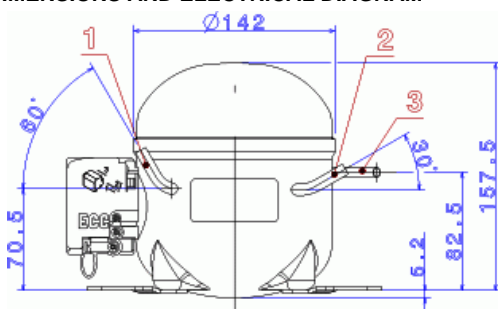
NOMINAL PERFORMANCE	CYCLE A	CYCLE B
Cooling capacity (kcal/h)	50	68
Input power (W)	85	89
EER (kcal/Wh)	0.58	0.76
COP (W/W)	0.67	0.88
Current (A)	0.61	0.62

TEST CONDITIONS

Evaporating temp. (°C)	-25.0	-23.3
Condensing temp. (°C)	55.0	55.0
Liq.t. entering expan. (°C)	55.0	32.0
Ambient t. and return (°C)	32.0	32.0
Tens/Freq (V/Hz)	220V 50Hz	220V 50Hz

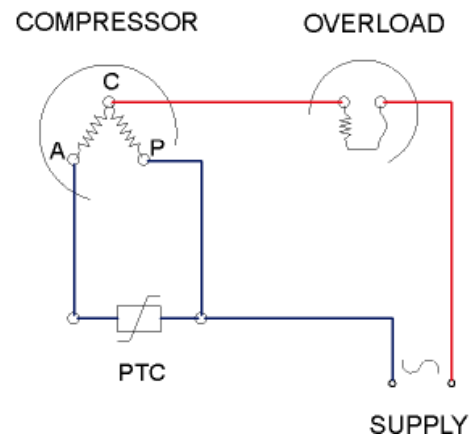
ELECTRICAL COMPONENTS

Relay	PTC 3003 - K100		
Nominal voltage (V)	200 - 240		
Resistance μ	14,00		
Protector	T0321	4TM205NFBYY	AE24FU
Current (A)	5.2	6.0	52.0
Time check (seg)	7.5-14	5-15	7.5-14
Disc temp. (Open/Close) (°C)	120.0 / 62.0	120.0 / 61.0	120.0 / 62.0

DIMENSIONS AND ELECTRICAL DIAGRAM


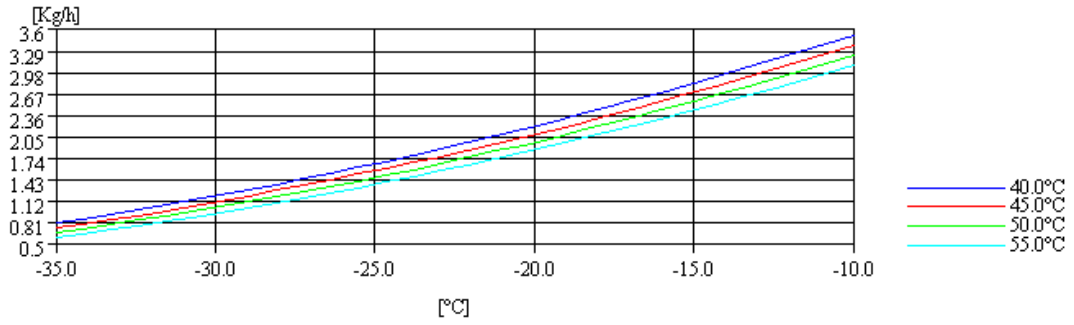
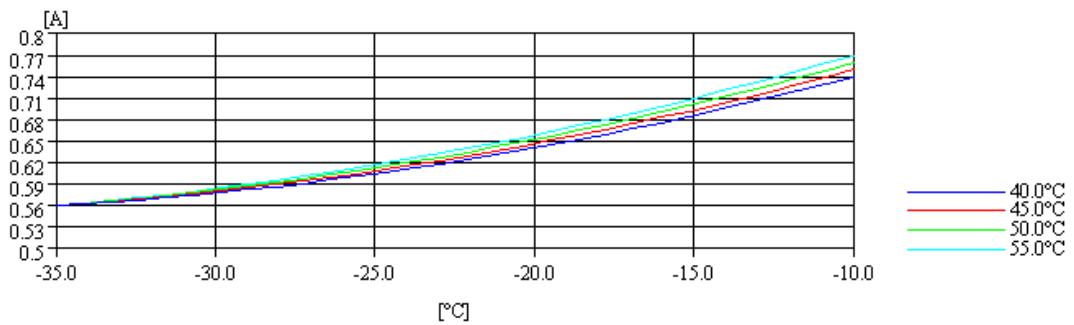
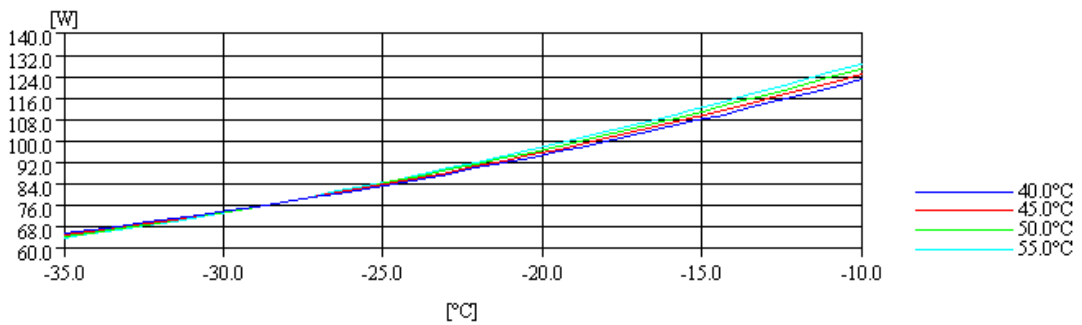
DESIGNATION	INTERNAL DIAM. (MM)
1 Suction/Service	6.5
2 Service/Suction	6.5
3 Discharge	4.9

RSIR



TEST CONDITIONS

Voltage/frequency	220V 50Hz
Ambient t. and return	32 °C
Liq.t. entering expan.	Subcooling at 32 °C

MASS FLOW

INTENSITY

CONSUMPTION

COOLING CAPACITY
