

COMPRESSOR

Displacement (cm ³)	3
Diameter (mm)	18.0
Stroke (mm)	12.1
Net Weight (Kg)	5.8
Oil type	ISO VG 22 ESTER
Oil charge (cm ³)	200

MOTOR

Approximate Power (CV)	1/10
Voltage/Frequency (V/Hz)	220V 50Hz
Voltage range (V)	198-264
Code	70.016
Type	RSIR
Phase number	1 PH
Locked rotor current (A)	7.1
Main W. resist. at 25°C (Ω)	25.7
Start W. resist. at 25°C (Ω)	24.98

APPLICATION

Application	High/Mid. back pressure
Refrigerant	R134a
Evaporating (°C)	-25 to 10
Expansion	Capillar
Comp. cooling	Fan cooled
Max. ambient temp. (°C)	43

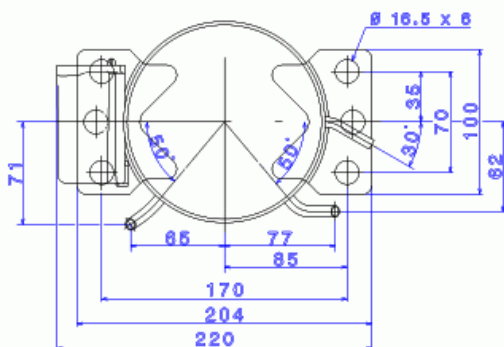
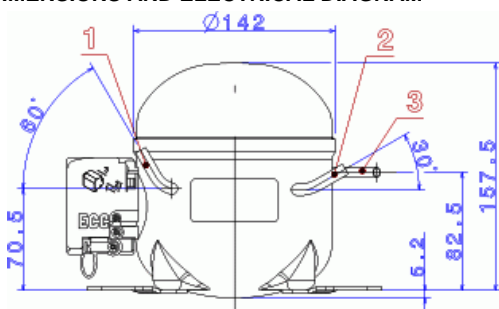
NOMINAL PERFORMANCE	CYCLE C	CYCLE D
Cooling capacity (kcal/h)	200	240
Input power (W)	153	160
EER (kcal/Wh)	1.30	1.50
COP (W/W)	1.51	1.74
Current (A)	0.90	0.91

TEST CONDITIONS

Evaporating temp. (°C)	5.0	7.2
Condensing temp. (°C)	55.0	55.0
Liq.t. entering expan. (°C)	55.0	46.0
Ambient t. and return (°C)	32.0	35.0
Tens/Freq (V/Hz)	220V 50Hz	220V 50Hz

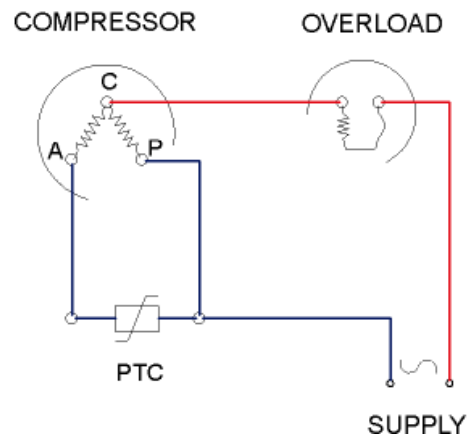
ELECTRICAL COMPONENTS

Relay	PTC 3003 - K100	
Nominal voltage (V)	200 - 240	
Resistance μ	14,00	
Protector	T0136	4TM189NFBYY
Current (A)	6.8	5.5
Time check (seg)	7.5-14	5-15
Disc temp. (Open/Close) (°C)	105.0 / 62.0	120.0 / 61.0

DIMENSIONS AND ELECTRICAL DIAGRAM


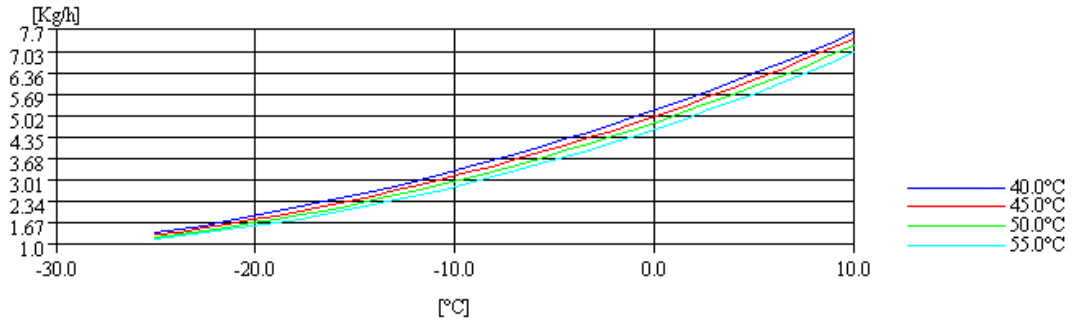
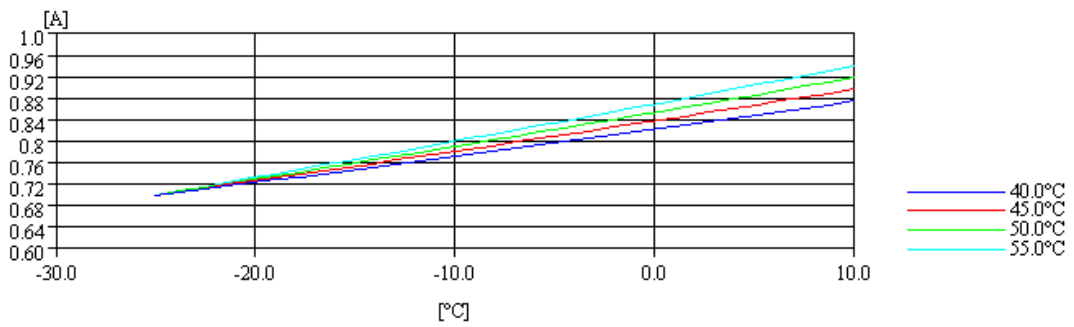
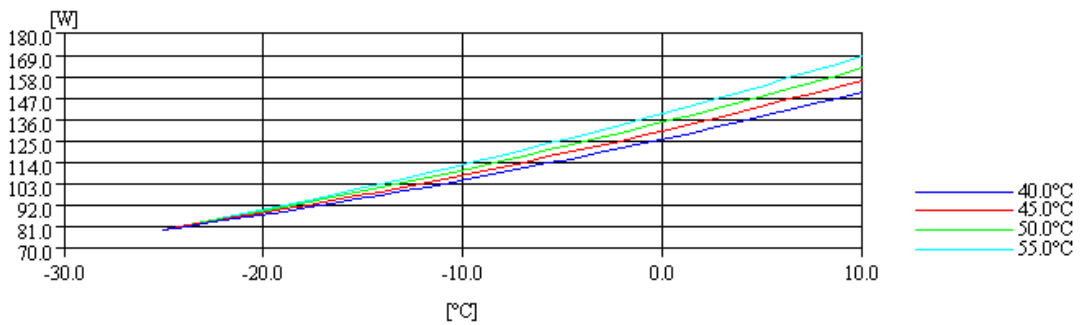
DESIGNATION	INTERNAL DIAM. (MM)
1 Suction/Service	6.5
2 Service/Suction	6.5
3 Discharge	4.9

RSIR



TEST CONDITIONS

Voltage/frequency	220V 50Hz
Ambient t. and return	35 °C
Liq.t. entering expan.	Subcooling 9 K

MASS FLOW

INTENSITY

CONSUMPTION

COOLING CAPACITY
