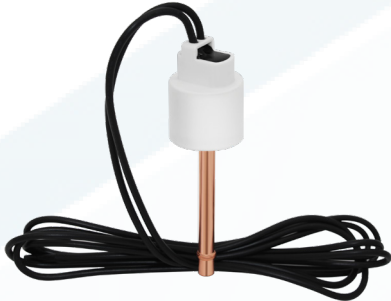


Pressure Switches



Pressure Switch – MPS

Switch Function: Automatic Reset

El. Connection: Various

IP class: 67

Medium Temperature: -35°C/+135°C

Ambient Temperature: -30°C/+65°C

Certificates: PED Cat. IV, EMC, Cat.IV, LVD (VDE)

TECHNICAL PARAMETERS OF PRESSURE SWITCH (AUTOMATIC)

Type	Pressure OFF	Tolerance OFF	Pressure ON	Tolerance ON	Port Size	Cable
	[bar]	[bar]	[bar]	[bar]	[mm]	[cm]
MPS1AH03	0,6	+0,25/0	1,8	+0,25/2	6,35	100
MPS2AH29	31	+/-1	24	+/-1,5	6	150
MPS1AH07	0,10	+0.3/0	0,90	+0.3/-0.3	6	100
MPS1AH13	0,20	+0.2/-0.2	1,20	+0.3/-0.3	6	200
MPS1AH05	0,60	+0.25/-0	1,80	0.25/0	6	300
MPS2AH07	26	+0/-1.6	20	0/-2	6	450
MPS2AH22	29	±1	25	±1,5	8	10
MPS2AH13	31,5	+0.7/-1.3	23	+3/-3	6,35	100
MPS2AH01	41,5	0/-1.5	32	+2/-2	6,35	100
MPS2AH08	46	+0.7/-1.3	35	+3/-3	6,35	100

For specific pressure switch types please contact your local Sanhua representative



Pressure Sensor - YCQ

Maximum operation pressure: Depends on type

IP class: 65/67

Current Consumption (0,5-4,5V): Max. 10mA

Supply Voltage (0-20mA): 10VDC-30VDC

El. Connection: depends on type

Certificates: PED Art. 4.3, LVD (VDE)

TECHNICAL PARAMETERS OF PRESSURE TRANSMITTER

STANDARD / CUSTOM	Model	Min Pressure (bar)	Max Pressure (bar)	Output signal	Accuracy	Work Temp range (°C)	Mech connection	Electrical connection
Standard	YCQB02H163	0	16	0,5 to 4,5V	±0,8% FS	-30 / 80	Solder 1/4	Molex
Standard	YCQB02H50	0	13,8	0,5 to 4,5V	±2% FS	-30 / 120	Solder 1/4	Packard connector
Standard	YCQB02H63	0	16	0,5 to 4,5V	±0,8% FS	-30 / 120	Solder 1/4	Molex
Standard	YCQB03H06	0	30	0,5 to 4,5V	±0.8% FS	-40 / 120	Solder 1/4	2000mm wires + XHP
Standard	YCQB04H151	0	33	0,5 to 4,5V	±1% FS	-30 / 120	Solder 1/4	Packard connector
Standard	YCQB04H50	0	34,5	0,5 to 4,5V	±2% FS	-30 / 120	Solder 1/4	Packard connector
Standard	YCQB05H11	0	50	0,5 to 4,5V	±2% FS	-40 / 150	Solder 1/4	2000mm wires + XHP
Standard	YCQC01H01	-1	9	4 - 20 mA	±0,8% FS	-40 / 80	Solder 1/4	2000mm wires + XHP
Standard	YCQC06H101	0	60	4 - 20 mA	±1% FS	-40 / 80	Solder 1/4	Packard connector
Standard	YCQC06H102	0	60	4 - 20 mA	±1% FS	-40 / 80	Solder 6mm	Packard connector
Standard	YCQC06H103	0	60	4 - 20 mA	±1% FS	-40 / 80	Solder 1/4	M12 connector
Standard	YCQC06H104	0	60	4 - 20 mA	±1% FS	-40 / 80	Solder 6mm	M12 connector