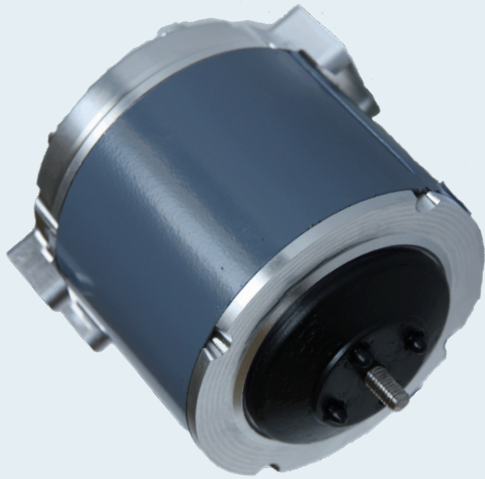




hawco

COMMUTATED EC MOTOR
Walk-In Coolers | Evaporators | Condensers | Ventilation

PRELIMINARY



DATASHEE
TUC40

SPECIFICATION

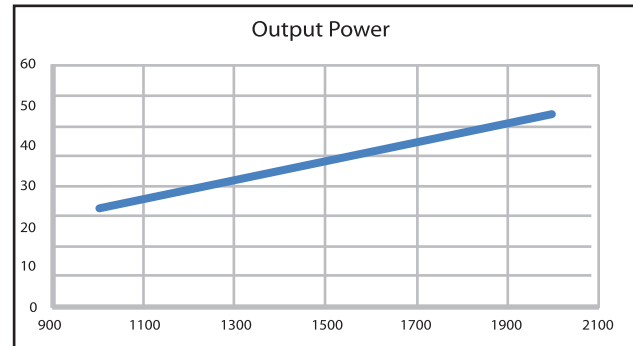
Rated Voltage	100 - 240Vac (+/-10%), 50/60Hz
Temperature Range	-30°C to +50°C
Thermal Derate Protection	Torque compensation in overload condition
Rated Current	0.8/ 0.4A
Efficiency	≤ 75%
Output Power	40W Nominal (1/20th hp@1550 rpm)
Rated Speed	400 to 2000 rpm (+/-1%)
Speed Selection	3 discrete programmable speeds.
Direction of Rotation	CCW, CW, reversible
Reverse Speed	Timed reverse options available.
Motor Protection	Electronic Protected (EP)
Ground Protection	Earth wire optional
Insulation Class	Class B
Shaft Diameters	8mm
Bearing	608 sealed ball bearings
Approvals	UL / TÜV / CE / RCM
Ingress Protection	IP66

WIRING DIAGRAM



BLACK Control Wire
BLUE Neutral
BROWN Phase

PERFORMANCE



DIMENSION

