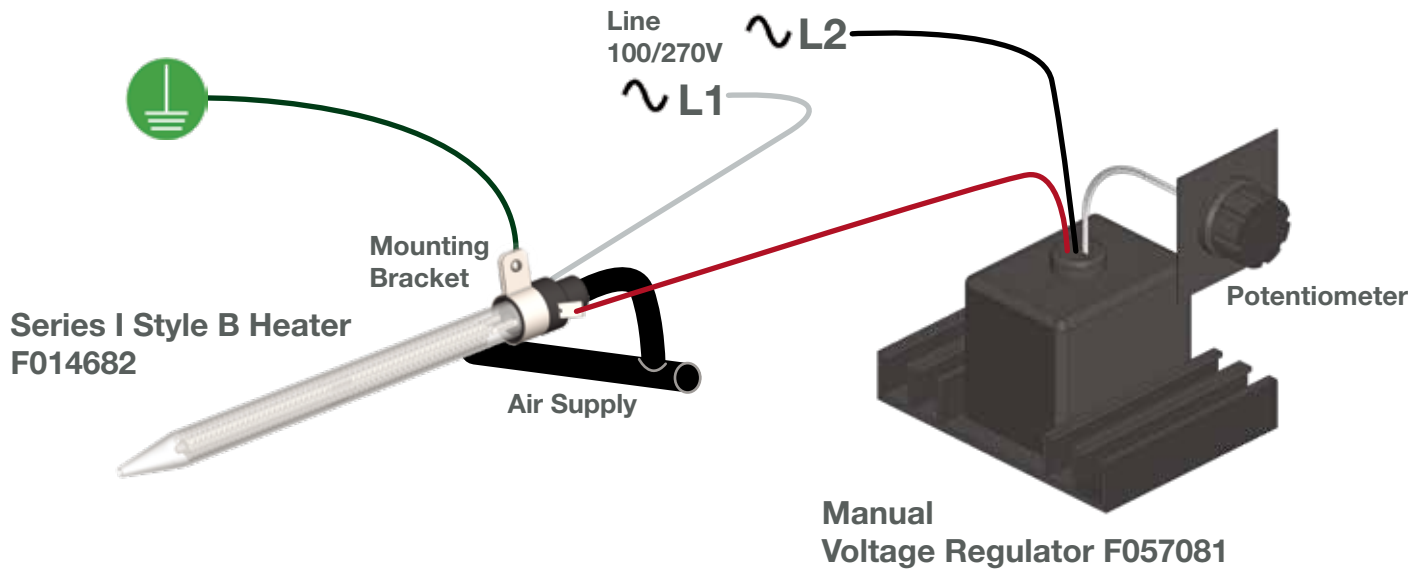


# Series I, II, III Air Heaters

## General Description

Series heaters are general purpose compact electric air heaters using Serpentine™ wire heating elements within a Quartz open-end ( Style A ) or nozzle ( Style B ) for spot-heating applications. The Series products are typically powered by open-loop ( manual ) power controllers. The air inlet is a high-temperature silicone rubber adapter with male spade power connectors and a ground. Mounting in existing or new equipment is made easy by the included bracket.

## Open-Loop Connection Diagram



## Minimizing Series Element Failures

- Always ensure air is flowing before powering the heating element
- Slowly regulate the ramp up time using the potentiometer to control AC voltage

Series I	Series II	Series III
<ul style="list-style-type: none"> <li>– Small diameter</li> <li>– Long Quartz tube</li> <li>– Max. 1400°F</li> <li>– Up to 300 SCFH @ 1000°F</li> </ul>	<ul style="list-style-type: none"> <li>– Same diameter as Series I</li> <li>– Smaller Quartz tube length</li> <li>– Nominal line voltages</li> <li>– 60V at Max. 1200°F</li> <li>– 300 SCFH @ 1000°F</li> </ul>	<ul style="list-style-type: none"> <li>– Larger diameter</li> <li>– Temperatures to 1600°F</li> <li>– Delivers up to 600 SCFH @ 825°F</li> </ul>

## Stainless Steel Outer Shields – Style A Open-Ended

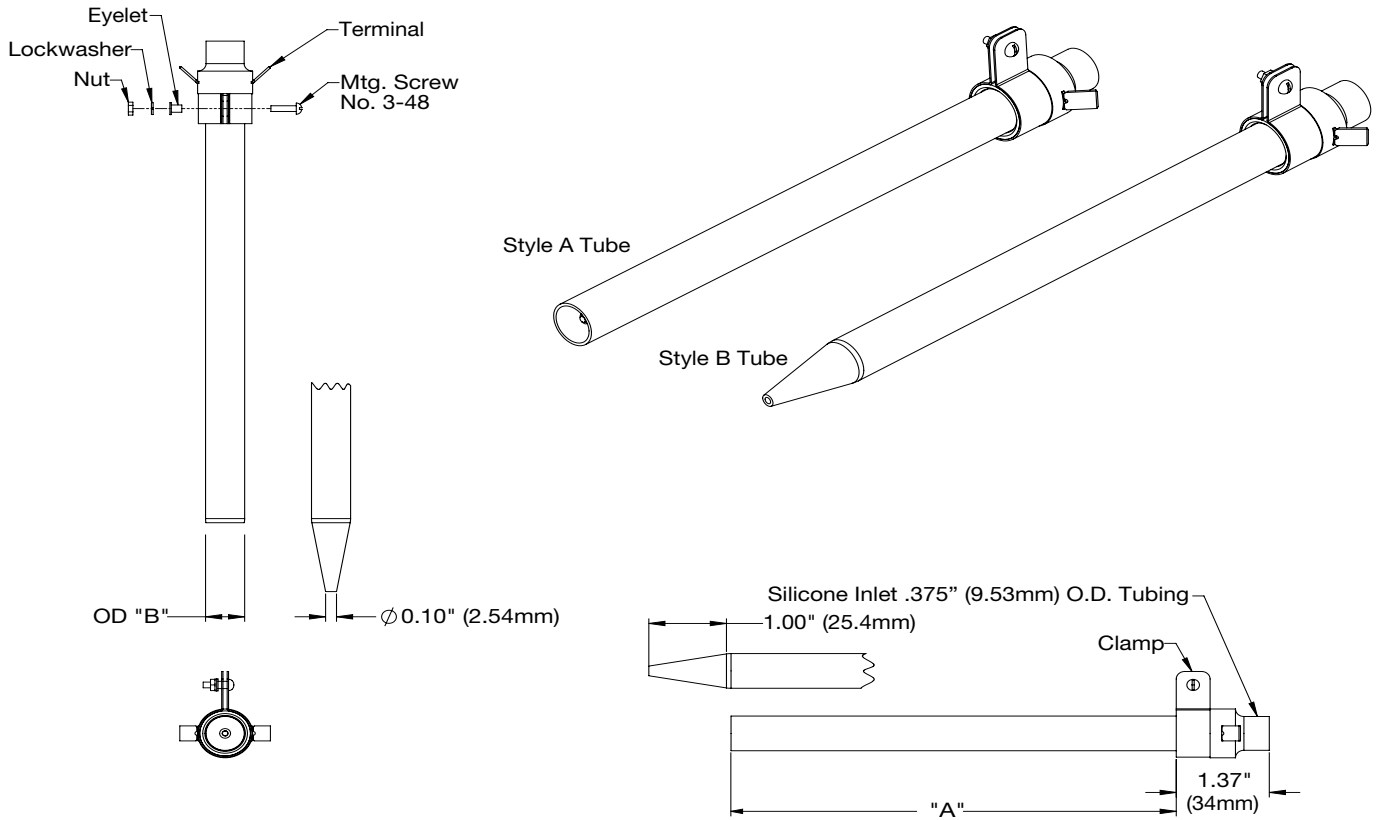
F015509

Series I P/N F014372

Series I P/N F010226

Series II P/N F016501, F016503

# Dimensions / Installation Reference



Part Number	Style	Max. Watt	Max. Volts	Max. Amps	Length "A"	Diameter "B"
<b>Series I</b>						
F010226	A	1050W	180V	5.83A	6.88" (175mm)	.41" (10mm)
F014372	A	1000W	130V	7.69A	7.75" (197mm)	.41" (10mm)
F014682	B	680W	145V	4.69A	7.88" (200mm)	.41" (10mm)
F014683	B	650W	105V	6.19A	8.75" (222mm)	.41" (10mm)
<b>Series II</b>						
F016501	A	1125W	130V	8.65A	3.88" (98mm)	.41" (10mm)
F016503	A	850W	80V	10.62A	3.88" (98mm)	.41" (10mm)
F016502	B	600W	95V	6.32A	4.88" (124mm)	.41" (10mm)
F016504	B	650W	70V	9.29A	4.88" (124mm)	.41" (10mm)
<b>Series III</b>						
F017558	A	2050W	160V	12.81A	6.88" (175mm)	.59" (15mm)
F017575	B	1450W	135V	10.74A	7.88" (200mm)	.59" (15mm)

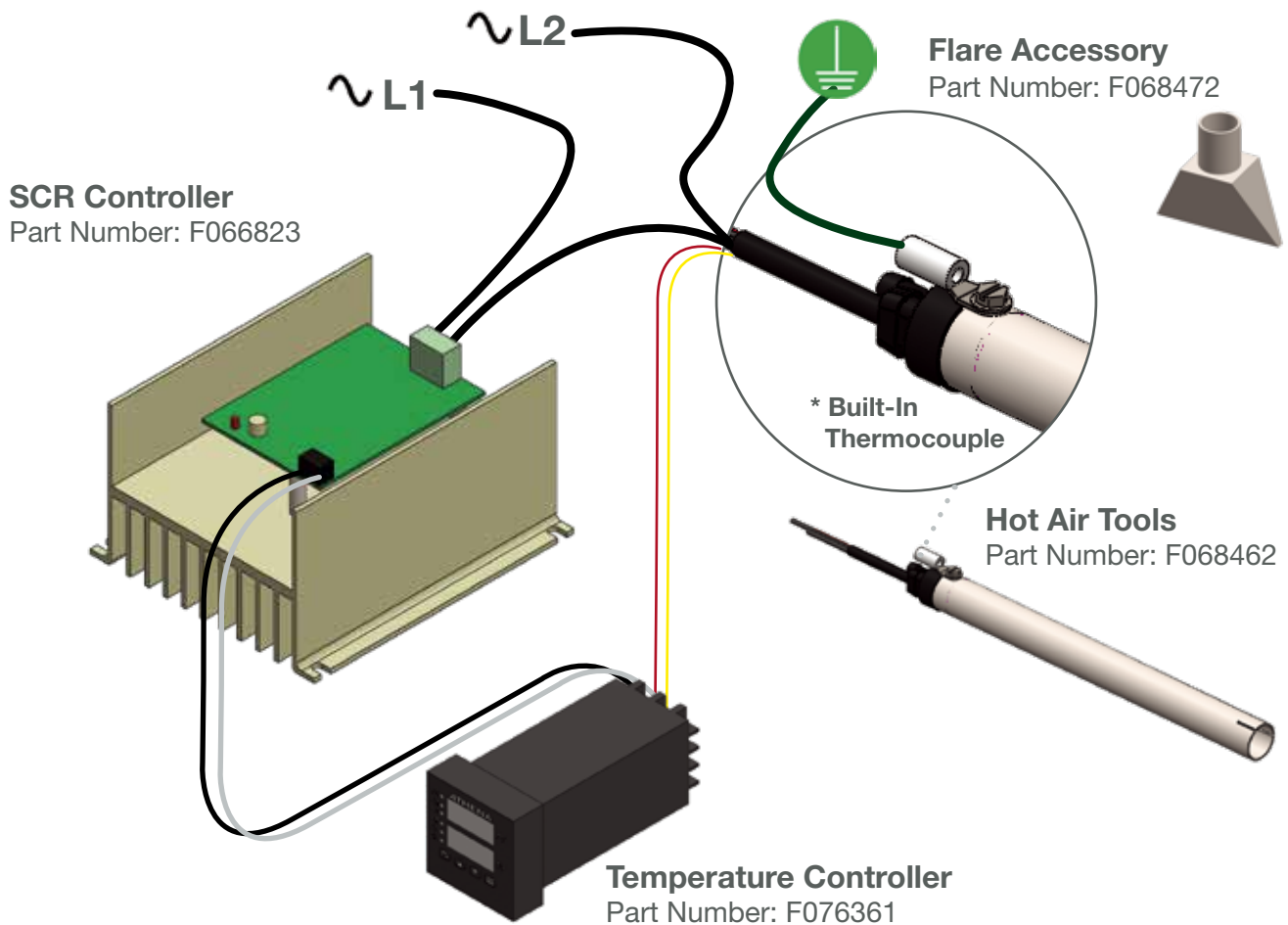


# Hot Air Tools

## General Description

Hot Air Tools are multi-purpose electric heaters with a built-in thermocouple for precise temperature control. The compact size makes this product perfect for single phase OEM applications. Its 304 stainless steel body construction is slotted for flared accessories and is made to withstand pressures up to 60 psi (4 bar) and temperatures up to 1400°F (760°C)

## Closed-Loop Connection Diagram

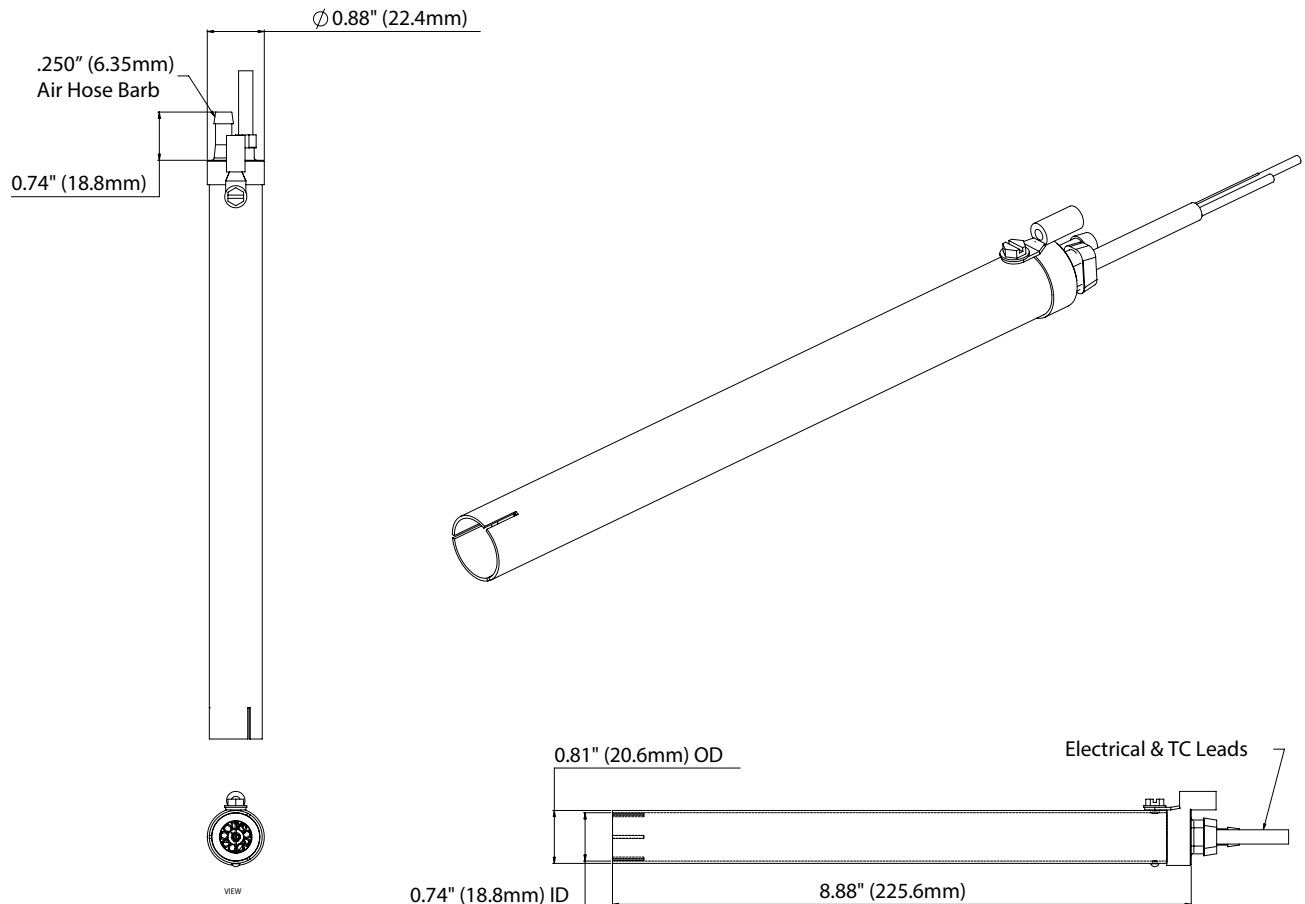


## Minimizing Hot Air Tools Element Failures



1. Always ensure air is flowing before powering the heating element
2. Slowly regulate the ramp up time using the potentiometer to control the AC voltage
3. Use a temperature controller with 100ms cycle time

# Dimensions / Installation Reference



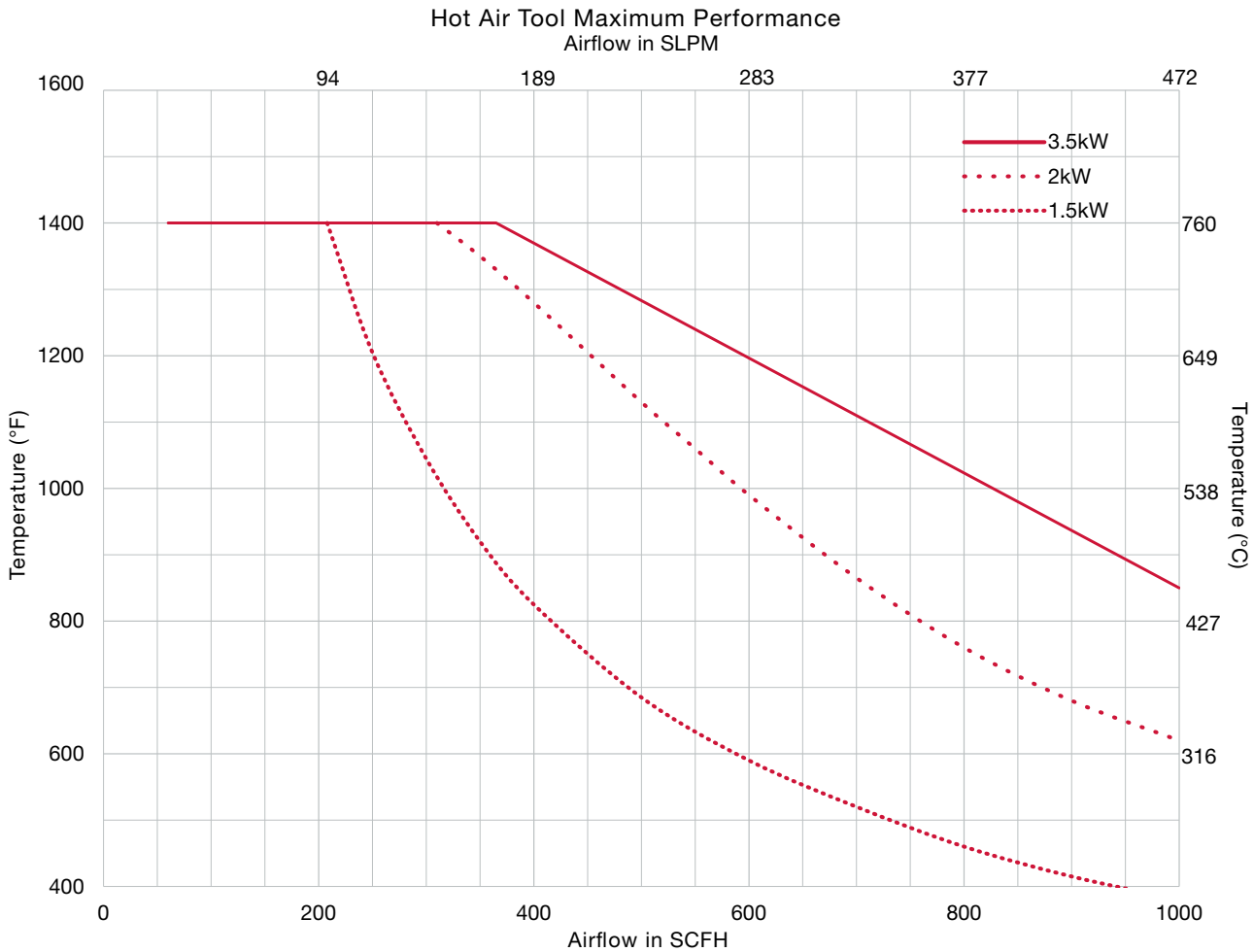
## Hot Air Tools

Part Number	Max. Watt	Max. Volts	Max. Amps
F068462	1.5kW	120V	12.5A
F068463	2.0kW	240V	8.3A
F068464	3.5kW	240V	14.6A

## Hot Air Tools Accessories

Part Number	Description
F068472	Flare Attachment Accessory
F066823	Closed-Loop SCR Power Controller
F076361	Digital Temperature Controller

# Hot Air Tools Performance Curves



## Notes:

- Temperatures are measured by internal 'K' T/C sensors. Use of other sensor types and / or locations can result in heater damage.
- Minimum airflow for accurate control is 60 SCFH
- Maximum air temperature is 1400°F (760°C) with supplied "K" T/C. Operating above this curve will void the product warranty.

