

120V & 240V ENCLOSURE HEATERS FOR ELECTRONIC EQUIPMENT PROTECTION

hawco

Silicone rubber enclosure heaters offer protection against frost and condensation in enclosures containing electronic equipment, such as ATMs, temperature control panels and control valve housings.

As standard stock items, enclosure heaters can be supplied at 25, 50, 100 and 200 watt for 120V or 240V supply.

Heater assemblies can be supplied with either integral or remote 15°C (60°F) air temperature sensing thermostats.

INSTALLATION

Factory fitted to an aluminium mounting plate that allows for easy installation.

Mounting surface is perpendicular to the heater and has two mounting holes. Heaters with an integral thermostat should be vertically mounted with the sensor towards the base of the enclosure.

CHARACTERISTICS

Good resistance to: photodegradation, weathering, fungus & bacteria, acetone, alcohol, formic acid, brake fluid, acetic acid, greases, hydrochloric acid 10%, sulphuric acid 10%, waxes and plasticisers.

In addition to this, the heaters have adequate gas permeability and good steam resistance up to 130°C and 2.5 bar respectively.

FEATURES & OPTIONS

- 25, 50, 100 and 200 watt heaters @120V
- 50, 100 and 200 watt heaters @240V
- 20" (500mm) PTFE leads as standard
- Manufactured using etched foil technology for precise, even heating
- Heaters supplied pre-attached to mounting plate for easy installation
- Heaters available with UL/CSA component recognition
- Bespoke designs available on request

THERMOSTAT SPECIFICATION

Integral or remote air temperature sensing thermostats ensure heater operation in condensation forming and other air heating application conditions

- Close 5C +/-3, open 15C +/-3
- Close 40F +/-5, open 60F +/-5
- Rated for 100,000 cycles @10amps 250V/15amps 120V



TO TALK TO OUR EXPERT TEAM,
CALL **+44 (0)1483 869 070** OR
EMAIL **SALES@HAWCO.CO.UK**

ENCLOSURE HEATERS MODELS AND DIMENSIONS

WITH MOUNTED THERMOSTAT (60°F/15°C)

WITHOUT MOUNTED THERMOSTAT

MODEL	VOLTS	WATTS
ENC001-2045	120	25
ENC001-2046	120	50
ENC001-2047	120	100
ENC001-2048	120	200
ENC001-2050	240	50
ENC001-2051	240	100
ENC001-2052	240	200

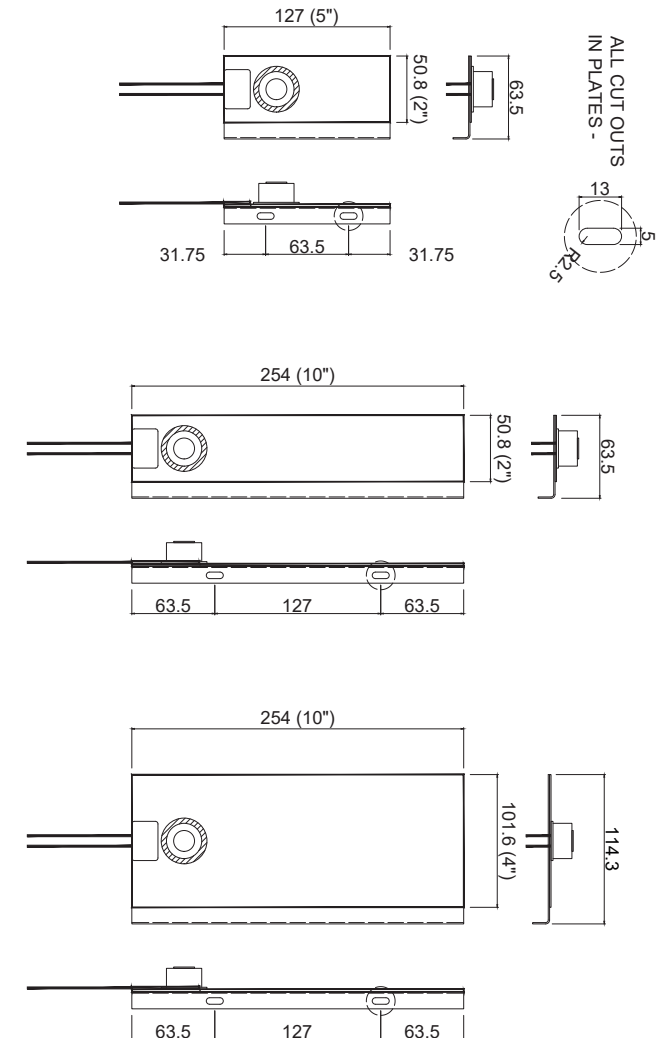
MODEL	VOLTS	WATTS
ENC001-2057	120	25
ENC001-2058	120	50
ENC001-2059	120	100
ENC001-2060	120	200
ENC001-2061	240	50
ENC001-2062	240	100
ENC001-2063	240	200

REMOTE AIR TEMPERATURE THERMOSTAT (60°F/15°C)

MODEL	VOLTS	WATTS
ENC001-2064	-	-

DIMENSIONS

WATTS	HEATED SURFACE	PLATE SIZE	MOUNTING SURFACE
25	2 X 5" (50 X 125MM)	2.5 X 5" (63 X 127MM)	0.5 X 5" (12 X 127MM)
50	2 X 5" (50 X 125MM)	2.5 X 5" (63 X 127MM)	0.5 X 5" (12 X 127MM)
100	2 X 10" (50 X 250MM)	2.5 X 10" (63 X 254MM)	0.5 X 10" (12 X 254MM)
200	4 X 10" (100 X 250MM)	4.5 X 10" (114 X 254MM)	0.5 X 10" (12 X 254MM)
Standard lead length 40" (1000mm) with pressure sensitive adhesive			



TO TALK TO OUR EXPERT TEAM,
CALL **+44 (0)1483 869 070** OR
EMAIL SALES@HAWCO.CO.UK

ENCLOSURE HEATERS

DETERMINING MINIMUM RECOMMENDED WATTAGE



Temperature Above Ambient	TOTAL ENCLOSURE SURFACE AREA (M ² / FT ²)													
	0.19 / 2	0.28 / 3	0.37 / 4	0.46 / 5	0.56 / 6	0.7 / 7.5	0.84 / 9	0.93 / 10	1.39 / 15	1.86 / 20	2.32 / 25	2.79 / 30	3.72 / 40	4.65 / 50
Uninsulated Enclosures														
11°C (20°F)	30W	40W	55W	70W	80W	100W	120W	135W	205W	270W	335W	405W	540W	670W
22°C (40°F)	55W	80W	110W	135W	160W	200W	245W	270W	405W	540W	670W	805W	1075W	1340W
33°C (60°F)	90W	120W	160W	205W	245W	300W	365W	405W	605W	805W	1005W	1210W	1610W	2010W
44°C (80°F)	110W	160W	215W	270W	325W	400W	485W	540W	805W	1075W	1340W	1610W	2145W	2680W
55°C (100°F)	135W	200W	270W	335W	405W	500W	605W	670W	1005W	1340W	1675W	2010W	2680W	3350W
Insulated Enclosures														
11°C (20°F)	10W	10W	15W	20W	20W	25W	30W	35W	50W	65W	80W	100W	130W	160W
22°C (40°F)	15W	20W	30W	35W	40W	50W	60W	65W	100W	130W	160W	195W	260W	320W
33°C (60°F)	20W	30W	55W	57W	60W	75W	90W	100W	145W	195W	240W	290W	385W	480W
44°C (80°F)	30W	40W	55W	65W	80W	100W	115W	130W	195W	260W	320W	320W	515W	640W
55°C (100°F)	35W	50W	65W	80W	100W	125W	145W	160W	240W	320W	400W	400W	640W	800W

Enclosures with surface areas larger than 50ft²/4.65m² available on request.

In most cases, multiple heaters should be used in applications requiring wattages greater than 500 watts

TO TALK TO OUR EXPERT TEAM,
CALL **+44 (0)1483 869 070** OR
EMAIL **SALES@HAWCO.CO.UK**