


SPECIFICATION:
MAX. CURRENT/VOLTAGE RATING WITH RESISTIVE LOAD:

 400mA 32VAC-100mA 50VDC-125mA 125VAC
 500mA 48VAC - 200 mA 50VDC - 200mA 250VAC for metal material.

INITIAL CONTACT RESISTANCE: 50mΩ max.

INSULATION RESISTANCE: 1GΩ min.at 500VDC.

DIELECTRIC STRENGTH: 1,000 VAC rms.
 1,500 VAC rms. for metal material.

ELECTRICAL LIFE AT FULL LOAD: 500,000 cycles.

OPERATING TEMPERATURE: -30°C to 85°C.

PANEL THICKNESS:

B1 series : 0.8 mm (.031) min. -1.8 mm (.071) max.

B2 series : 1.5 mm (.059) min. -4 mm (.157) max.

B3 series : 2.85 +0.05/-0.10 mm (.112)

TOTAL TRAVEL: 1.5 mm(.059)

OPERATING FORCE: 2N~5N

CONTACT BOUNCE: 10 ms.

MECHANICAL LIFE: 1,000,000 cycles.

TORQUE: 0.5 Nm max.applied to nut,
 1.5 Nm max. for metal material.

SOLDERING: 350°C max.for 5 seconds.

MATERIALS
CASE: Diallyl phthalate (DAP)(UL94v-0).

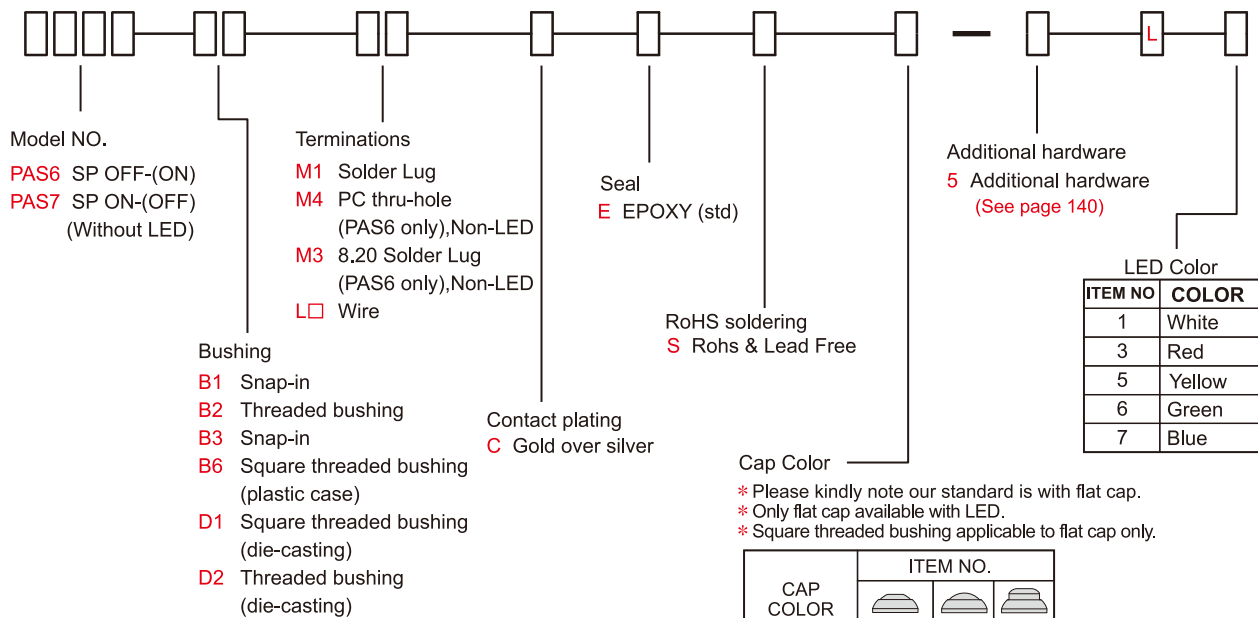
CAP: Polyamide 6/6.

BUSHING: Polyamide 6/6.

 IP 67
 ACCORDING TO
 EN 60529:1991+A1:2001
 IEC 60529:2001


HOW TO ORDER

MODEL NO. BUSHING TERMINATIONS CONTACT PLATING SEAL RoHS SOLDERING CAP COLOR ADDITIONAL HARDWARE LED LED COLOR


Bushing plated
A chromium
C Stain-chromium
D Stain-nickel plating

※If you need bushing plated see page 137.

EXAMPLE:

PAS6B2M1CES□-5(Without LED)

CAP color

PAS6BM1CES□-5L□

LED Color

CAP color

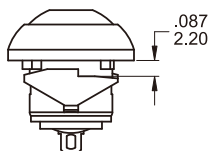
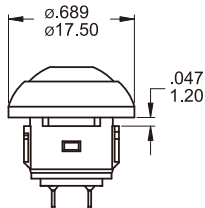
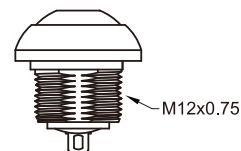
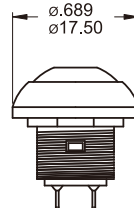
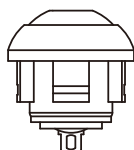
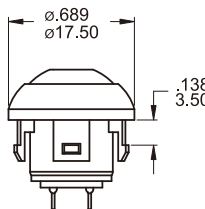
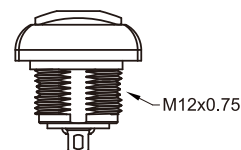
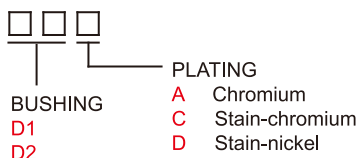
CAP COLOR	ITEM NO.		
	Flat(std.)	Round	High
White	1	A1	G1
Black (Std)	2	A2	G2
Red (Std)	3	A3	G3
Orange	4	A4	G4
Yellow	5	A5	G5
Green	6	A6	G6
Blue	7	A7	G7

* Besides standard color, other colors need to check stocks available.

SWITCH FUNCTION

NO. POLES	MODEL NO.	SWITCH FUNCTION		CONNECTED TERMINALS		SCHEMATIC
		POS.1	POS.2	POS.1	POS.2	
SP	PAS6	OFF	(ON)	OPEN	1-3	
SP	PAS7	ON	(OFF)	1-3	OPEN	

()=MOMENTARY

BUSHING TYPE
B1

B2 / D2

B3

D1 / B6

BUSHING PLATING


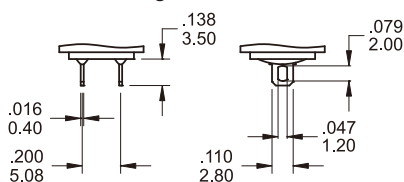
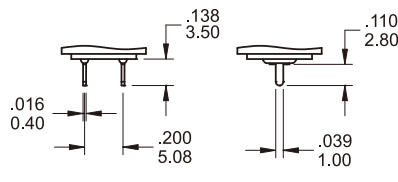
Chromium



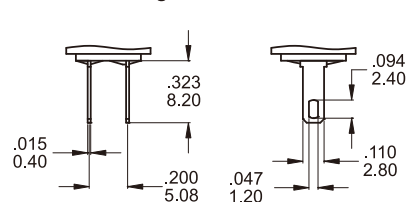
Stain-chromium



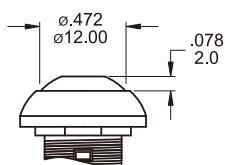
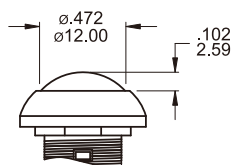
Stain-nickel

TERMINATION OPTIONS
M1 Solder lug

M4 PC Thru-hole


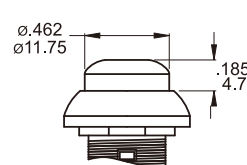
* Only for PAS6 model type, Non-LED

M3 Solder lug


* Only for PAS6 model type, Non-LED

CAP OPTIONS
FLAT STD

ROUND Non-LED


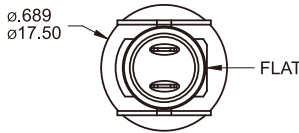
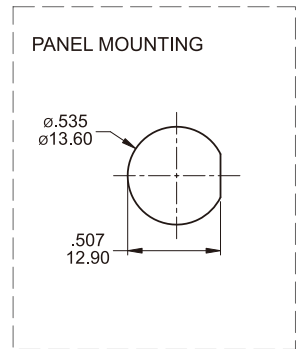
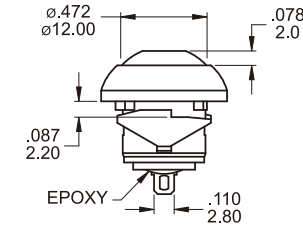
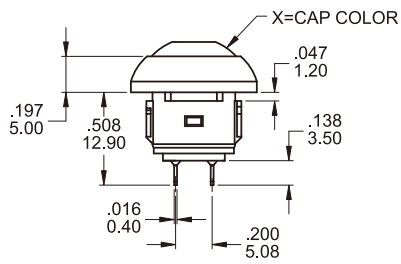
* Only for B1,B2,B3,D2 bushing type

HIGH Non-LED


* Only for B2,D2 bushing and PAS6 model type



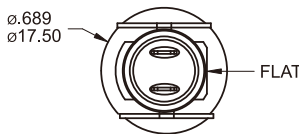
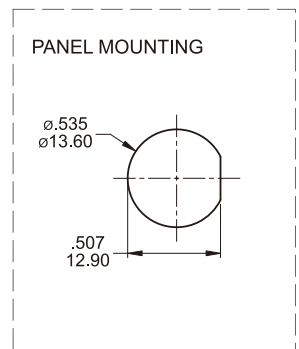
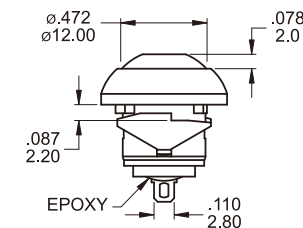
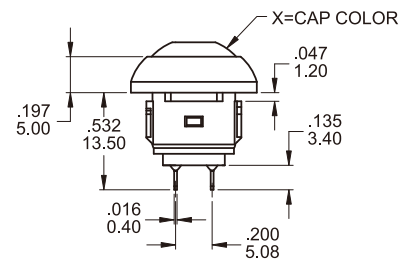
B1



SPST

Part No. Shown : PAS6B1M1CESX-5

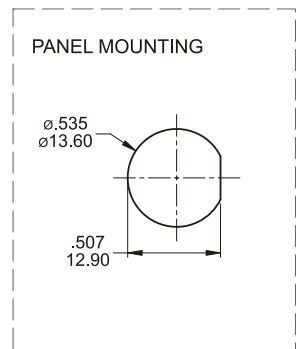
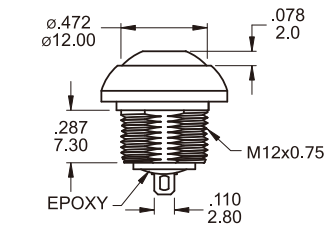
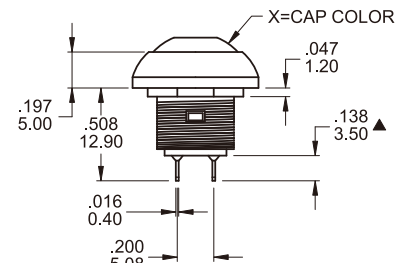
B1



SPST

Part No. Shown : PAS7B1M1CESX-5

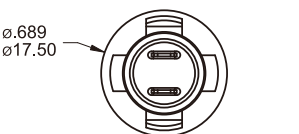
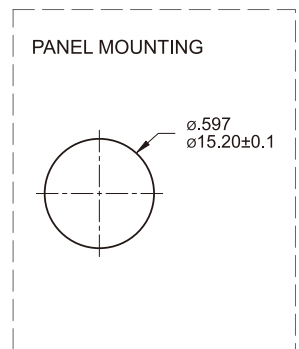
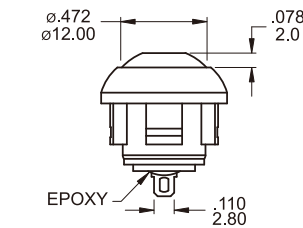
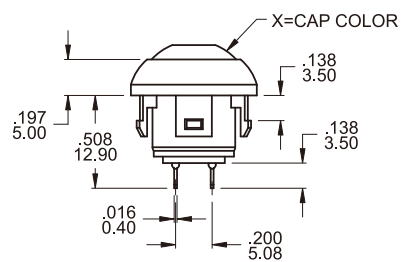
B2



SPST

Part No. Shown : PAS6B2M1CESX-5

B3

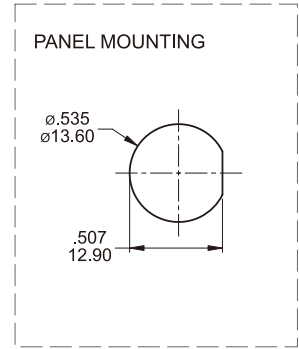
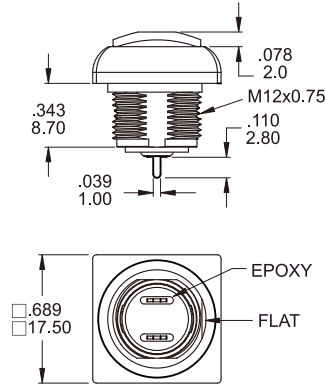
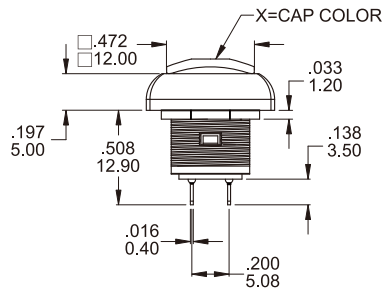


SPST

Part No. Shown : PAS6B3M1CESX-5



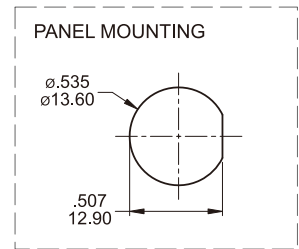
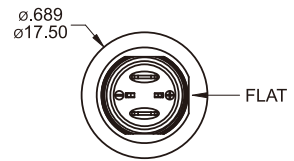
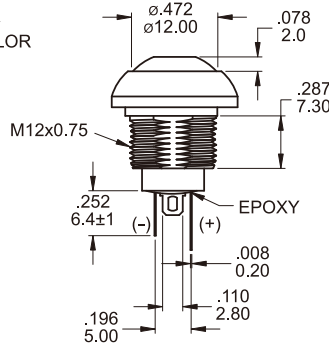
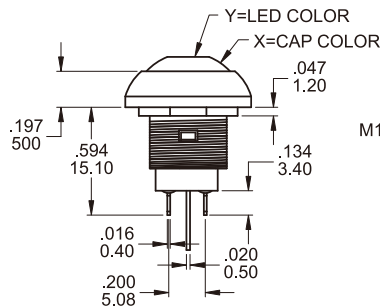
B6



SPST

Part No. Shown : PAS6B6M4CESX-5

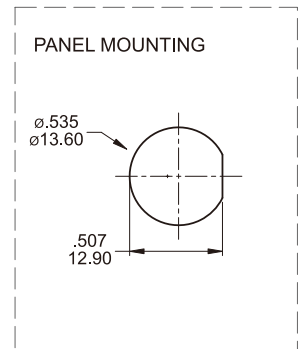
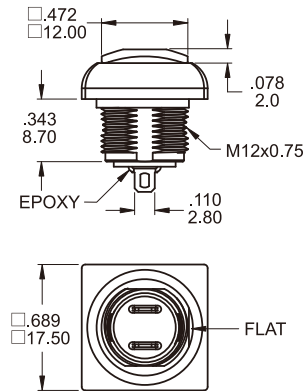
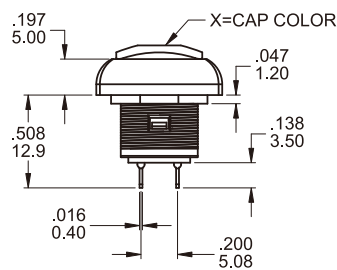
B2



SPST

Part No. Shown : PAS6B2M1CESX-5LY

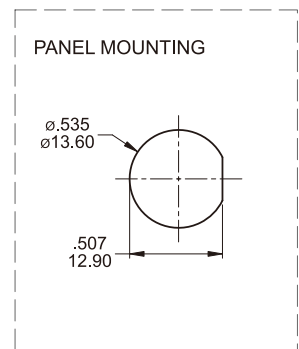
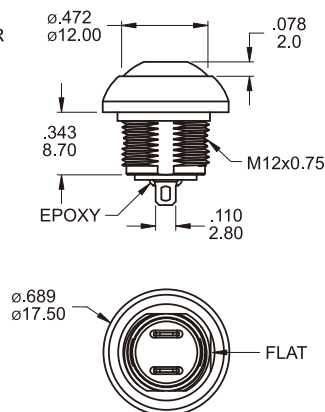
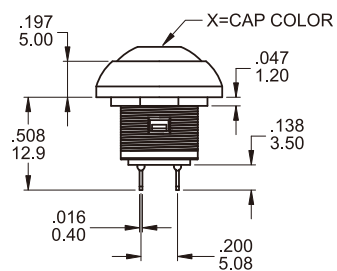
D1



SPST

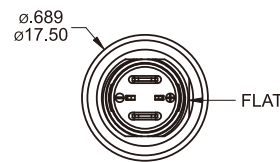
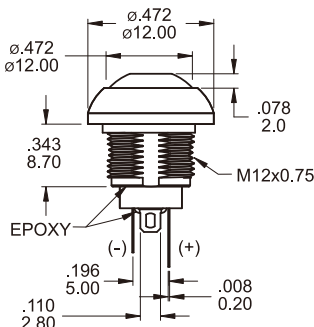
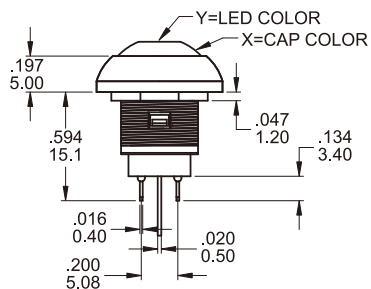
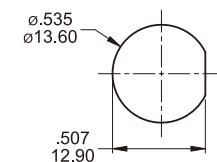
Part No. Shown : PAS6D1M1CESX-5

D2

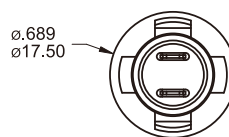
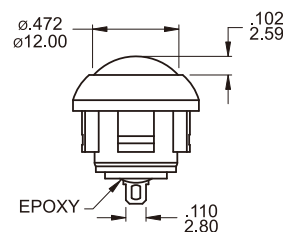
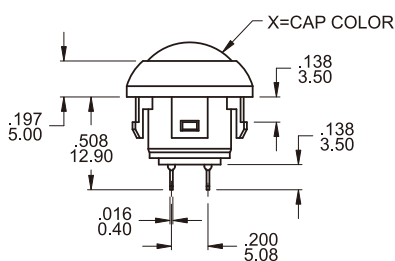
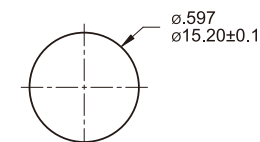


SPST

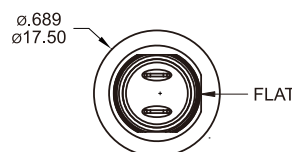
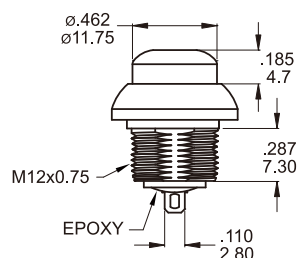
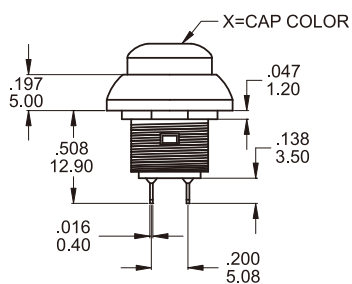
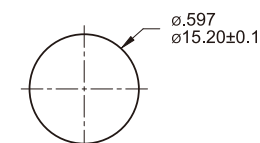
Part No. Shown : PAS6D2M1CESX-5

D2

PANEL MOUNTING


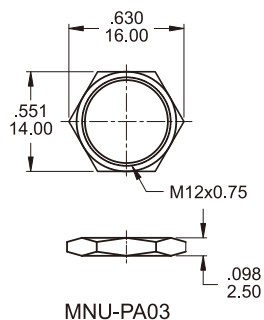
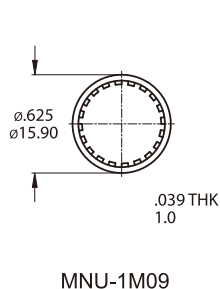
Part No. Shown : PAS6D2M1CESX-5LY

SPST
B3

PANEL MOUNTING


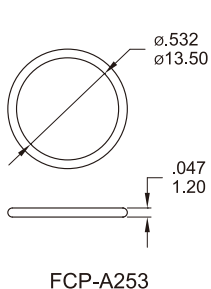
Part No. Shown : PAS6B3M1CESAX-5

SPST
B2

PANEL MOUNTING


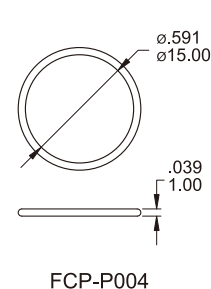
Part No. Shown : PAS6B2M1CESGX-5

SPST
HARDWARE
M12 NUT

LOCK WASHER


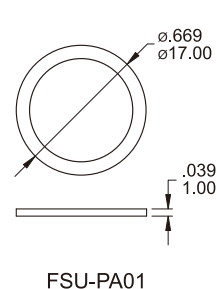
Supplied with B2 / D1 / D2 bushing

O-RING


Supplied with PAL6 and D1 / D2 options

O-RING


Supplied standard with B3 options

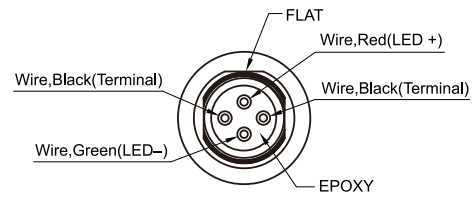
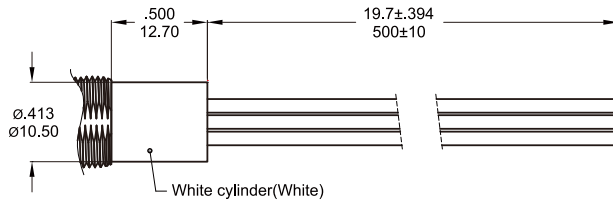
EVA WASHER


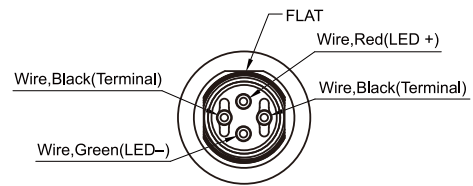
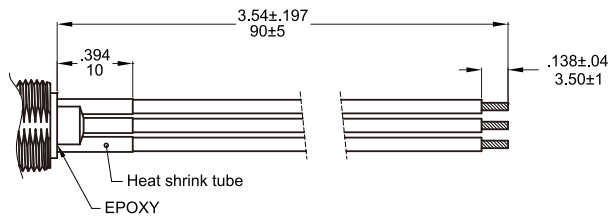
Supplied standard with B1 / B2 options

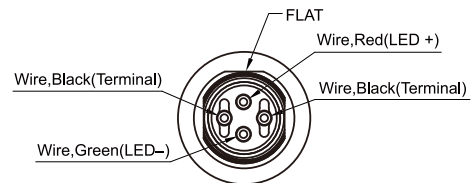
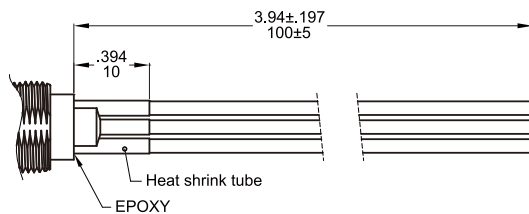
WIRE

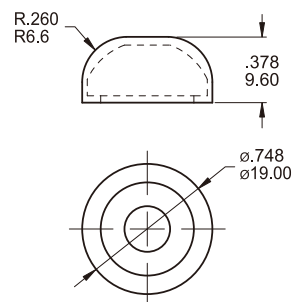
Note: When the switches with the wire assembly, we only test the electric conduction and will not test the contact resistance on the wire.

L1 Wire length: 500mm

 ※ Multi-wire lead AWG20, section 0.6mm², UL approved. (Black / Green / Red)

L2 Wire length: 90mm

 ※ Multi-wire lead AWG20, section 0.6mm², UL approved. (Black / Green / Red)

L3 Wire length: 100mm

 ※ Multi-wire lead AWG20, section 0.6mm², UL approved. (Black / Green / Red)

RUBBER - HOOD
FCP-P003
(Transparent cap)

FCP-P003-2
(Black cap)

SOLDERING PROCESSES

MANUAL SOLDERING: Use soldering iron of 30 watts, controlled at 350°C approximately 5 seconds while applying solder.

WAVE SOLDERING:

Recommended Soldering Temperature: 260 ± 5°C

Duration of Solder Immersion: Max 5 sec.

(PCB is 1.6mm in thickness)

IP 67 for the whole series:
Protected against the effects of immersion up to 1 m water(30min)

