

SPECIFICATIONS

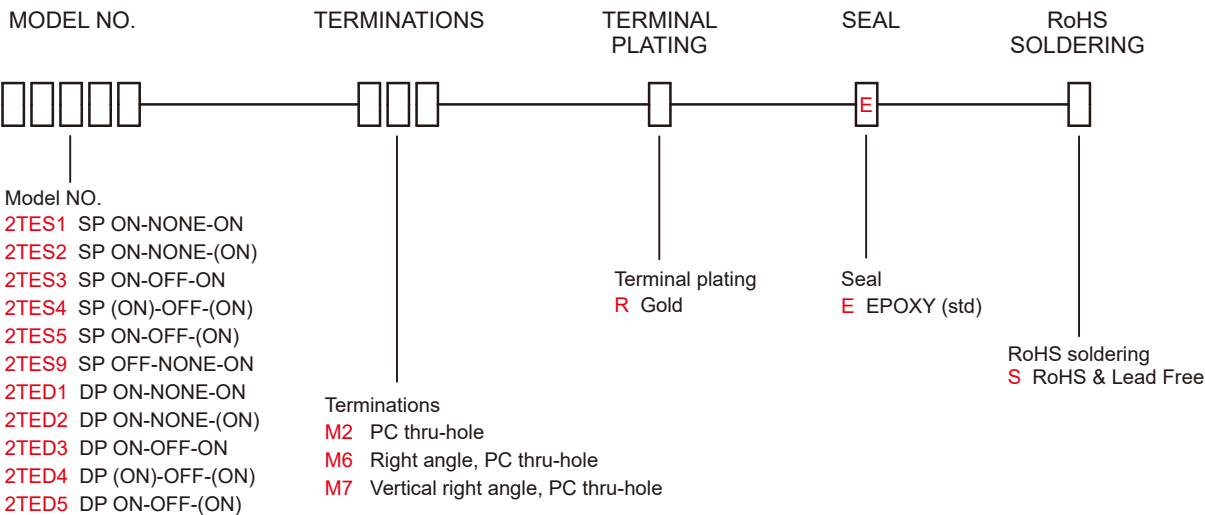
- CONTACT RATING:** Max 0.4 VA max @ 48 VAC or DC
- MECHANICAL LIFE:** minimum 40,000 operations.
- CONTACT RESISTANCE:** 50 mΩ max.
- INSULATION RESISTANCE:** 1,000 MΩ min.
- DIELECTRIC STRENGTH:** 500 Vrms min.@sea level.
- OPERATING TEMPERATURE:** -20°C to 85°C.
- DEGREE OF PROTECTION:** IP67

MATERIALS

- ACTUATOR:** Brass,chrome plated,internal O-ring seal.
Standard for all actuators.
- BUSHING & HOUSING:** SPCC
- CASE:** Glass filled nylon 6/6, flame retardant,heat stabilized (UL94v-0)
- SWITCH SUPPORT:** Brass,tin plated.
- CONTACT:** Phosphor bronze gold - plated over nickel barrier.
- TERMINALS:** Brass,gold plated.
- TERMINAL SEAL:** Epoxy



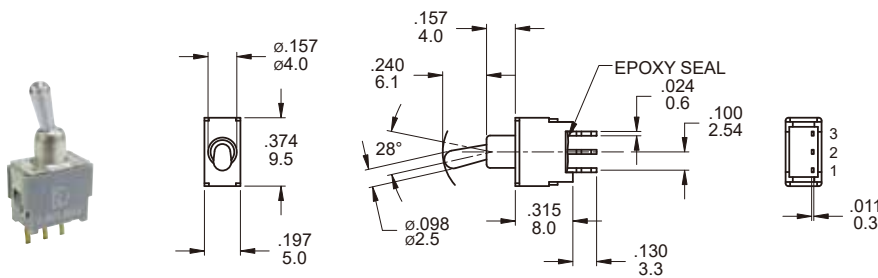
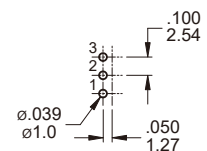
HOW TO ORDER



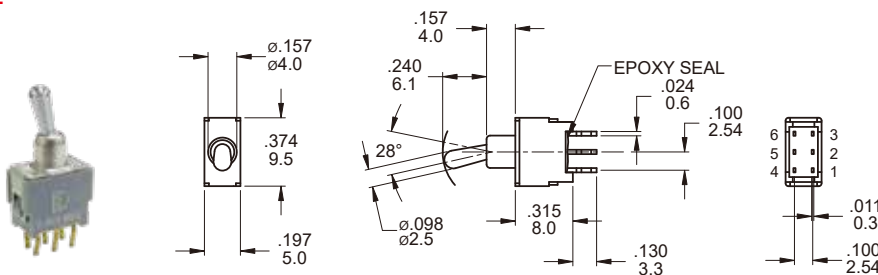
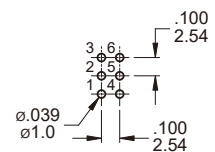
SWITCH FUNCTION

| NO. POLES | MODEL NO. | SWITCH FUNCTION | | | CONNECTED TERMINALS / SCHEMATIC | | |
|-----------|-----------|-----------------|-------|-------|---------------------------------|-------|-------------|
| | | POS.1 | POS.2 | POS.3 | POS.1 | POS.2 | POS.3 |
| | | | | | | | |
| SP | 2TES1 | ON | NONE | ON | 2-3 | N/A | 2-1 |
| | 2TES2 | ON | NONE | (ON) | | OPEN | |
| | 2TES3 | ON | OFF | ON | | | |
| | 2TES4 | (ON) | OFF | (ON) | OPEN | N/A | 2-1 |
| | 2TES5 | ON | OFF | (ON) | OPEN | N/A | 2-1 |
| | 2TES9 | OFF | NONE | ON | | | |
| DP | 2TED1 | ON | NONE | ON | 2-3,5-6 | N/A | 2-1,5-4 |
| | 2TED2 | ON | NONE | (ON) | | OPEN | |
| | 2TED3 | ON | OFF | ON | | | |
| | 2TED4 | (ON) | OFF | (ON) | OPEN | N/A | 2-1,5-4 |
| | 2TED5 | ON | OFF | (ON) | OPEN | N/A | 2-1,5-4 |

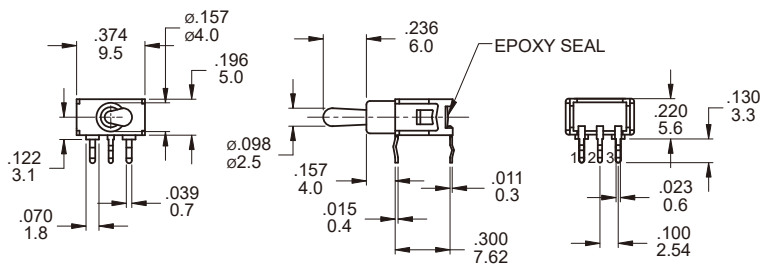
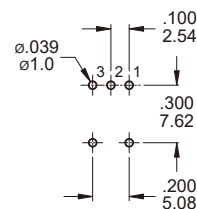
()=MOMENTARY

POLE OPTIONS
M2

P.C. MOUNTING

SPDT

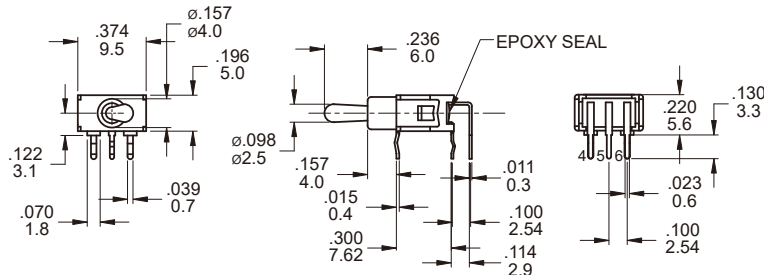
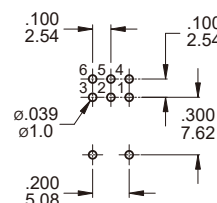
Part No. Shown : 2TES1M2RES

M2

P.C. MOUNTING

DPDT

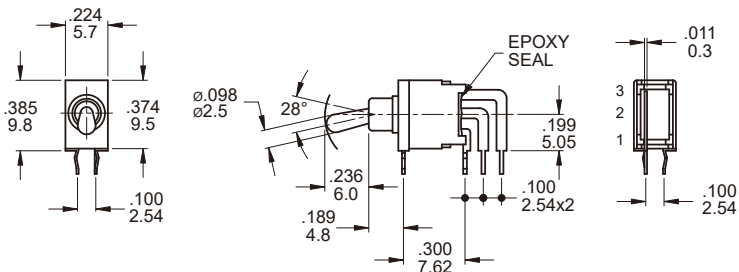
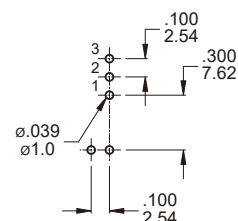
Part No. Shown : 2TED1M2RES

M6

P.C. MOUNTING

SPDT

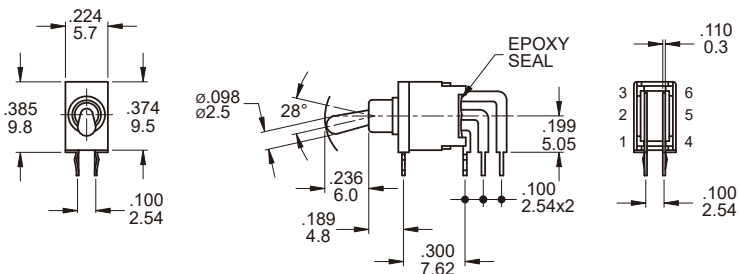
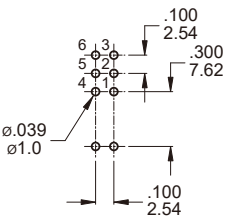
Part No. Shown : 2TES1M6RES

M6

P.C. MOUNTING

DPDT

Part No. Shown : 2TED1M6RES

M7

P.C. MOUNTING

SPDT

Part No. Shown : 2TES1M7RES

M7

P.C. MOUNTING

DPDT

Part No. Shown : 2TED1M7RES

SOLDERING PROCESSES
WAVE SOLDERING: Recommended Soldering Temperature: $260 \pm 5^{\circ}\text{C}$

Duration of Solder Immersion: Max 5 sec.(PCB is 1.6mm in thickness)