



Pixsys
ELECTRONICS

2020

Short form
catalogue



Certificate No.
146728-2013-AQ
ITA-ACCREDIA



A manufacturing company & a registered trademark

Pixsys stands for over twenty years of experience in designing and manufacturing of instrumentation for process control and industrial automation.

The range of products has been constantly expanding and currently includes indicators, PID controllers, signal converters, PLCs with I/O modules, HMIs and Panel PC.

All product segments are rooted in Pixsys background and expertise in process control, aiming to support customers with solutions for all measuring, visualization and control requirements.

Starting with hardware and software design, up to product assembly, the entire manufacturing cycle is completed at company's factory in Italy upon Lean manufacturing standards.

Milestone of Pixsys Quality policy is the QR-code marking system, which ensures the complete traceability of the product throughout its entire life cycle.

Product concept relies on extremely flexible hardware and software structures among the most versatile in their market segment. User-friendly interfaces and innovative programming tools simplify start-up and after-sales service.

Browse the web site www.pixsys.net for detailed information.



DOWNLOAD

Manuals, Application Notes and software tools are available for download either within product pages or in the general Download area.

VIDEO-MANUALS

Short video-manuals provide descriptions and examples about programming options by keyboard or by Memory Cards, as well as demos of software tools. Check company's YouTube channel.

FORUM & FAQ

A dedicated area for all your questions related to set-up, configuration and operating modes for Pixsys devices, including FAQ area for round-the-clock answers to the most frequent questions. A growing community of users sharing comments, questions, programming hints.

TRAINING SESSIONS

Special attention is reserved to technical trainings about programmable systems (PLCs, HMIs) but also about parametric devices if required. Arranged upon request, trainings can be focused on a specific project, as an opportunity to combine theory and practice. Contact our Sales team for details.



EXTENSIVE SALES NETWORK

Become a PIXSYS partner!

Our expanding sales network includes Systems Integrator with strong background in PLCs and HMIs programming as well as distributors of industrial electronic devices with a focus on solutions rather than on single components. OEM companies can rely on our R&D department for tailored projects.

NEWSLETTER

Sign-up on our website to receive regular updates about products, special promotions, events and tradeshowes.

PID Controllers



ATR121



NEW BLUE LINE!



ATR144



ATR227



NEW BLUE LINE!



ATR244

DIMENSIONS (mm)	32 x 74 x 53	32 x 74 x 53	1/16 DIN (48 x 48 x 90)	1/16 DIN (48 x 48 x 105)
POWER SUPPLY	230 AC 12..24 V AC / DC 2 W - Isol. 3750 V	24..230 V AC / DC 2 W - Isol. 2500 V	24..230 V AC / DC 5,5 W - Isol. 2500 V	24..230 V AC / DC 8 W - Isol. 2500 V
PROGRAMMABLE ANALOGUE INPUTS	1	1	1	1 / 2
DIGITAL INPUT	○	●	●	2 / 4
CURRENT TRANSFORMER INPUT	○	○	○	● (Optional)
RELAY OUTPUTS	2	2	2	2 / 3
SSR CONTROL OUTPUT	●	●	●	2 / 4
ANALOGUE OUTPUTS (mA/Volt)	○	○	○	1 / 2
RS485 / M ODBUS	○	● (Optional)	○	● (Optional)
CANopen	○	○	○	○
SOFTWARE FEATURES				
PID / AUTOTUNING	●	●	●	●
PROG. HEATING / COOLING ACTION	●	●	●	●
OPEN / CLOSE LOGIC (valves)	●	●	○	●
RETRANSMISSION PV/SPV	○	○	○	●
REMOTE SETPOINT	○	○	○	● (Optional)
RAMP / SOFT START	○	●	●	●
PRE-PROGRAMMED CYCLE (3 steps)	○	●	○	●
DUAL PID HEATING / COOLING	●	●	○	●
LIMIT CONTROLLER (manual reset)	○	●	●	●
EASY-UP CODES	○	●	●	●
MEMORY CARD	●	●	● (USB)	● (USB)
LABSOFTVIEW (programming software)	●	●	●	●
"MyPixsys" NFC APP Android	○	●	○	●
APPLICATIONS				
FOOD INDUSTRY	●	●	●	●
COLD CHAIN EQUIPMENTS / HVAC	●	○	○	○
PACKAGING	○	●	●	●
PLASTICS / RUBBER INDUSTRY	○	●	●	●
FOOTWEAR / LEATHER MACHINERY	●	●	●	●
TEXTILE INDUSTRY	○	●	●	●
LABORATORY EQUIPMENTS	○	●	●	●
OVENS / FURNACES	●	●	●	●
BURNERS / BOILERS	●	●	○	○



NEW BLUE LINE!



NEW BLUE LINE!



ATR171

ATR444

DRR227

DRR244

DRR460

DRR450

72 x 72 x 99

1/8 DIN (48 x 96 x 123)

4 modules DIN43880
(DIN rail EN60715)

4 modules DIN43880
(DIN rail EN60715)

1 module DIN43880
(DIN rail EN60715)

(DIN rail EN60715)

24..230 V AC / DC
5,5 W - Isol. 2500 V

24..230 V AC / DC
4 W - Isol. 2500 V

24..230 V AC / DC
3 W - Isol. 2500 V

24..230 V AC / DC
3 W - Isol. 2500 V

24 V DC
3 W

24 V DC
1 W

1 / 2 (23 ABC-T)

2

1

1

1

1 (TC K, J, T, E)

●

2 / 4

●

2

○

○

○

●

○

●

●

●

1..4

2..4

1 / 2

3

○

○

●

2 / 4

1 / 3

2

2

●

● (Optional)

● (Optional 1 / 2)

○

●

● (0/4..20mA)

○

● (Optional)

● (Optional)

○

●

●

●

○

○

○

○

●

○

●

●

●

●

●

●

●

●

●

●

●

●

●

●

○

●

●

○

●

●

○

●

●

○

●

●

○

○

○

○

●

●

●

●

●

●

●

●

○

●

○

○

●

●

○

●

●

●

●

●

○

●

○

○

●

● (USB)

● (USB)

● (USB)

● (USB)

○

●

●

●

●

●

●

○

●

○

●

○

○

○

●

○

●

○

○

○

●

○

○

○

○

○

●

○

○

○

○

○

●

○

○

○

○

○

●

○

○

○

○

○

●

○

○

○

○

○

●

○

○

○

○

○

●

○

○

○

○

○

●

○

○

○

○

○

●

○

○

○

○

○

●

○

○

○

○

○

●

○

○

○

○

○

●

○

○

○

○

Process Controllers / Programmers



ATR421



ATR621



ATR902



ATR313



PL300

DIMENSIONS (mm)	1/8 DIN (48 x 96 x 123)	72 x 72 x 99	120 x 65 x 65	251 x 146 x 66	160 x 90 x 58
POWER SUPPLY	24..230 V AC / DC 4 W - Isol. 2500 V	24..230 V AC / DC 5,5 W - Isol. 2500 V	230 V AC 4 W - Isol. 2500 V	12..24 V AC / DC - 10 W	12..24 V AC / DC
PROGRAMMABLE ANALOGUE INPUTS	1	1	1	see PL300	4
DIGITAL INPUT	1	1	○	see PL300	6
RELAY OUTPUTS	2..4	2..4	2	see PL300	12
SSR CONTROL OUTPUT	●	●	○	see PL300	4 (-30AD)
ANALOGUE OUTPUTS (mA/Volt)	●	●	○	●	●
RS485 / MODBUS	● (Optional)	● (Optional)	○	●	●
POTENTIOMETER INPUT / FEEDBACK SIGNAL	●	●	○	● (module PL250)	○
SOFTWARE FEATURES					
PID / AUTOTUNING	●	●	●	●	●
OPEN / CLOSE LOGIC (valves)	●	●	○	●	○
RETRANSMISSION PV/SPV	●	●	○	●	●
REMOTE SETPOINT	○	○	○	○	●
CYCLE RECOVERY	●	●	●	●	○
WAITING FUNCTION	●	●	●	●	○
DELAYED START	●	●	●	○	○
GAS KILN OPTIONS	●	○	○	●	●
MULTILOOP APPLICATIONS	○	○	○	●	●
CYCLES / PROGRAMS	15	15	15	20	○
STEPS / SEGMENTS	45	45	18	30	○
MEMORY CARD	●	●	○	●	●
LABSOFTVIEW (programming software)	●	●	○	○	○
APPLICATIONS					
GLASS / CERAMICS KILNS	●	●	●	●	●
ENVIRONMENTAL CHAMBERS	●	●	○	●	●
DRYERS	●	●	○	○	○
HEAT TREATMENT PLANTS	●	●	○	●	●
LABORATORY EQUIPMENT	●	○	○	●	●
INDUSTRIAL FURNACES	●	●	●	●	●
HOBBY KILNS (pottery, metal clay, glassware)	○	●	●	○	○
METAL WORKING	●	●	○	●	●
FOOD INDUSTRY	●	●	○	○	●

Timers / Counters



TCT101-1ABC TCT101-2ABC TCT101-3ABC TCT101-4ABC-T TCT201-1ABC TCT201-2ABC TCT201-3ABC

DIMENSIONS (mm)	32 x 74 x 53				48 x 48 x 107		
POWER SUPPLY	24..230 V AC / DC 3 W - Isol. 2500 V				24..230 V AC / DC 3 W - Isol. 2500 V		
DIGITAL INPUTS (NPN / PNP / TTL)	3	3	3	3	3	3	3
RELAY OUTPUTS	2	2	2	1	2	2	2
ANALOGUE INPUT (potentiometer)	●	●	●	●	●	●	●
RS485 / MODBUS	○	○	○	●	○	○	○
SOFTWARE FEATURES							
TIMER (on-off / pause-work / oscillator / pwm)	●	○	○	●	●	○	○
PROGRAMMABLE TIME BASIS	●	○	○	●	●	○	○
COUNTER MODE (up / down / lock / hold)	○	●	○	●	○	●	○
COUNTING FREQUENCY (up to 100 KHz)	○	●	○	●	○	●	○
TACHOMETER (up to 100 KHz)	○	○	●	●	○	○	●
START / STOP / HOLD BY DIGITAL INPUT	●	●	●	●	●	●	●
BACK-UP BATTERY	●	●	●	●	●	●	●
MEMORY CARD	●	●	●	●	●	●	●
LABSOFTVIEW (programming software)	●	●	●	●	●	●	●
ENCODER MONO-DIR. (Push Pull / Line Driver)	○	●	●	●	○	●	●
ENCODER BI-DIR. (Push Pull / Line Driver)	○	●	●	●	○	●	●
APPLICATIONS							
FOOD INDUSTRY	●	●	●	●	●	●	●
COLD CHAIN EQUIPMENTS / HVAC	○	○	○	○	○	○	○
PACKAGING	●	●	●	●	●	●	●
PLASTICS / RUBBER INDUSTRY	●	●	●	●	●	●	●
FOOTWEAR / LEATHER MACHINERY	●	●	●	●	●	●	●
TEXTILE INDUSTRY	●	●	●	●	●	●	●
LABORATORY EQUIPMENTS	●	●	●	●	●	●	●
OVENS / FURNACES	●	●	●	●	●	●	●
BURNERS / BOILERS	●	●	●	●	●	●	●

Indicators / Panel meters



Programmable by RFID /NFC
No wiring required!



STR551



STR561



STR571

	STR551	STR561	STR571
DIMENSIONS (mm)	1/8 DIN (96 x 48 x 48)	1/8 DIN (96 x 48 x 48)	1/8 DIN (96 x 48 x 48)
POWER SUPPLY	24..230 V AC / DC 6 W - Isol. 2500 V	24..230 V AC / DC 6 W - Isol. 2500 V	24..230 V AC / DC 6 W - Isol. 2500 V
PROGRAMMABLE ANALOGUE INPUT	1	0	0
STRAIN GAUGE ANALOGUE INPUT	0	1	0
DIGITAL INPUT	2	2	3
RELAY OUTPUTS	2	2	2
ANALOGUE OUTPUTS	●	● (0/4..20 mA)	○
RS485 / MODBUS	1	1	2
OLED DISPLAY	●	●	●
SOFTWARE FEATURES			
SUM	●	●	○
TOTALIZER	●	●	●
AUTO CALIBRATE / TARE FUNCTION	○	●	○
LATCH-ON FUNCTION	●	○	●
ALARMS	2	2	2
TREND / BAR GRAPH	●	●	○
DATA LOGGER	●	●	○
ANALOGUE RETRANSMISSION	●	●	○
LIMIT CONTROLLER (manual reset)	●	●	
MODBUS MASTER (8 variables)	○	○	●
MODBUS MULTI-MASTER	○	○	●
EASY-UP CODES	○	●	○
MEMORY CARD (USB)	●	●	●
LABSOFTVIEW (programming software)	●	○	○
"MyPixsys" NFC APP Android	●	●	●
APPLICATIONS			
FOOD INDUSTRY	●	●	●
COLD CHAIN EQUIPMENTS / HVAC	●	○	●
PACKAGING	●	●	●
PLASTICS / RUBBER INDUSTRY	●	●	●
FOOTWEAR / LEATHER MACHINERY	○	○	○
TEXTILE INDUSTRY	●	●	●
LABORATORY EQUIPMENTS	●	●	○
OVENS / FURNACES	●	○	○
BURNERS / BOILERS	○	○	○
MODBUS REMOTE DISPLAY	○	○	●

Signal converters



Programmable by RFID /NFC
No wiring required!



2000.35.010



2000.35.015



2000.35.016



2000.35.017

DIMENSIONS (mm)	45 x 23	45 x 23	1 mod. DIN43880 (Barra DIN EN60715)	1 mod. DIN43880 (Barra DIN EN60715)
POWER SUPPLY	6..32 V DC	6..32 V DC	6..32 V DC	6..32 V DC
ANALOGUE INPUT	PT100 / Ni100 / PT1000	PT100 / Ni100 / TC	PT100 / Ni100 / TC	0/4..20 mA - 0..10 V
ANALOGUE OUTPUT	4..20 mA	4..20 mA	4..20 mA	4..20 mA
GALVANIC ISOLATION (800 V)	○	●	●	●
LINEARIZATION (16 step)	○	○	○	●
RFID - NFC (Programmatore USB cod. 2000.35.012)	●	●	●	●
"MyPixsys" NFC APP Android	●	●	●	●
"ATEX" VERSION ATEX II 1 G EX IA IIC T3 ...T6 GA ATEX II 1 D EX IA IIIC T86...200°C DA ATEX I M1 EX IA I T150°C MA	2000.35.030	2000.35.031	-	-

APPLICATIONS

FOOD INDUSTRY	●	●	●	●
COLD CHAIN EQUIPMENTS / HVAC	○	○	○	●
PACKAGING	○	○	●	●
PLASTICS / RUBBER INDUSTRY	●	●	●	●
FOOTWEAR / LEATHER MACHINERY	○	○	●	○
OVENS / FURNACES	●	●	●	○

Current transformers



2000.35.013 / 022



2000.35.014 / 033



2000.35.021 / 036



2000.35.032

DIMENSIONS (mm)	46,1 x 63 x 26,4	46,1 x 63 x 26,4	46,1 x 63 x 26,4	1 mod. DIN43880 (Barra DIN EN60715)
POWER SUPPLY	11..30 V DC	12..35 V DC	9..30 V DC	10..40 V DC
MAX CURRENT READ (AC Voltage)	50 A / 300 A	50 A / 300 A	50 A / 300 A	External C.T. with F.S. 1 A, 5 A, 333 mV, C.T. Rogowski
MAX CURRENT READ (DC Voltage)	± 25 A o 50 A / ± 150 A o 300 A		50 A / 300 A	External C.T. with F.S. 1 A, 5 A, 333 mV, C.T. Rogowski
ANALOGUE OUTPUT	4..20 mA	0..10 V DC	○	○
RS485 / MODBUS	○	●	●	●
VOLTAGE ANALYZER	○	○	●	●

APPLICATIONS

FOOD INDUSTRY	●	●	○	○
COLD CHAIN EQUIPMENTS / HVAC	○	○	●	●
PACKAGING	●	●	●	○
PLASTICS / RUBBER INDUSTRY	●	●	●	●
OVENS / FURNACES	●	●	○	●

PLCs - I/O Modules



EPL101



PL110

DIMENSIONS (mm)	151 x 80 x max 33	108 x 890 x 64
POWER SUPPLY	24 / 230 V AC 4 W - Isol. 3000 V	24 V AC / DC - 6 W
DIGITAL INPUTS	6 PNP + 1 NPN	8 PNP
DIGITAL OUTPUTS (PNP)	○	○
DIGITAL OUTPUTS (relays)	5 relays 5A + 1 16A	8 relays 2A
ANALOGUE INPUTS	4 (16 bit)	4 (10 bit)
ANALOGUE OUTPUTS	1 (0..5V - 8 bit)	1 (0..10V - 8 bit)
SERIAL PORTS	1 RS232 - 1 RS485	1 USB - 2 RS485
PROTOCOLS	Modbus RTU Free port	Modbus RTU Free port
MODBUS MASTER	●	●
MODBUS SLAVE	●	●
EXPANSIONS ON EPL DIN BUS	○	○
DISPLAY	○	●

SOFTWARE FEATURES

FLASH MEMORY	64 kbyte	64 kbyte
RAM (variables area)	200 words	350 words (Back-up)
EEPROM AREA	1000 words	1000 words
MEMORY AREA	32000 words (Optional)	13000 words
REAL-TIME CLOCK	(Optional)	●
FIRMWARE UPDATE by Memory Card	●	●
ALGORITHMS CONTROL	P - PI - PID - PD	P - PI - PID - PD
SCANNING CYCLE	Min. 2 ms	Min. 2 ms
MQTT Client	○	○

PROGRAMMING OPTIONS

PIXSYS PLPROG	●	●
LOGICLAB	○	○
FILE EDS	○	○



NEW

NEW

NEW



PL500



PLE500 - I/O



MCM260X-I/O

3 mod. DIN43880 (DIN rail EN60715) 53 x 89 x 60	1, 3, 6 mod. DIN43880 (DIN rail EN60715) 53 x 89 x 60	4 o 6 mod. DIN43880 (DIN rail EN60715) 71 x 90 x 58
12..24 V DC	12..24 V DC	12..24 V AC / DC - 4 W
○	8 / 16	8 / 16
○	8..16 (700 mA MCM260-1/3)	8..16 (700 mA MCM260-1/3)
○	○	8 relays 5A (MCM260-4)
○	2x 4..20mA 1 16 bit (5AD)	4 (16 bit)
○	1 (0..10V 10 bit)	2 (V / mA)
1 RS232 - 1 RS485 1 CAN - 1 Ethernet	○	1 RS485 - 1 CAN
Modbus RTU - Modbus TCP/IP CAN Open Master	EPL DIN BUS	Modbus RTU CAN Open / Slave
●	○	○
●	○	●
●	●	○
○	○	○

PLProg



Programming for EPL101 / PL110

Pixsys development environment for PLC programming. It supports Ladder Diagram (LD) language for a straight-forward, simple approach to programming (Currently supporting only EPL101 and PL110).

CNV510 - Protocol converters



ETD1644-I/O

92 x 87 x 17

12..24 V DC

8

8

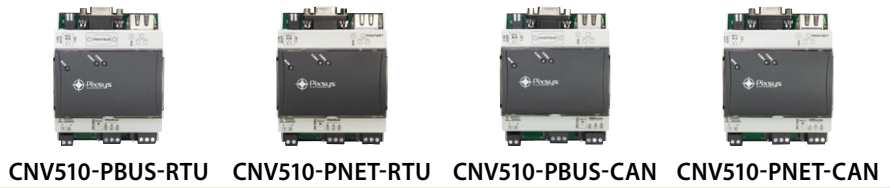
0

4 (16 bit)

4 (16 bit)
4..20mA / 0..10V

1 RS485 - 1 CAN

Modbus RTU
CAN Open / Slave



DIMENSIONS (mm)	4 mod. DIN43880 71x90x64			
POWER SUPPLY	12..24 V DC			
SLAVE PROTOCOL	Profibus DP	Profinet	Profibus DP	Profinet
MASTER PROTOCOL	Modbus RTU	Modbus RTU	CAN Open	CAN Open
CONNECTION TYPES	DB9 (Profibus), Terminal block (Modbus RTU)	RJ45 (Profinet), Terminal block (Modbus RTU)	DB9 (Profibus), Terminal block (CAN Open)	RJ45 (Profinet), Terminal block (CAN Open)
CONFIGURATION VIA ETHERNET	<input type="radio"/>	<input type="radio"/>	<input type="radio"/>	<input type="radio"/>
SOFTWARE FEATURES				
SUPPORTED NUMBER BYTE (input)	512	512	512	512
SUPPORTED NUMBER BYTE (output)	512	512	512	512
MAX. SLAVE NODES	247	247	125	125
MAX. N. FUNCTIONS PROTOCOL	245	512	245	512
PROGRAMMING OPTIONS				
COMPATIBILITY: SIEMENS STEP7 / TIA PORTAL (.gsd file)	<input type="radio"/>	<input type="radio"/>	<input type="radio"/>	<input type="radio"/>

Compositor SW67602 - PROFINET / Modbus

PROFINET / Modbus Master - Converter

Begin: Opened Configuration of the Converter : Example1

Step 1:

Step 2:

Step 3:

Step 4:

Step 5:

Set Modbus Access

Set Modbus Access

Modbus Read | Modbus Write

N	Slave ID	Type	Address	NPoint	Poll Time	Max Error	Position	Start Bit	Swap	Swap Word
1	1	Holding Register	100	1	1000	0	0	0	<input type="checkbox"/>	<input type="checkbox"/>
2	2	Holding Register	200	2	1000	0	2	0	<input type="checkbox"/>	<input type="checkbox"/>
3	2	Input Status	300	3	1000	0	4	0	<input type="checkbox"/>	<input type="checkbox"/>
4	2	Input Register	400	1	1000	0	5	0	<input type="checkbox"/>	<input type="checkbox"/>
5									<input type="checkbox"/>	<input type="checkbox"/>
6									<input type="checkbox"/>	<input type="checkbox"/>
7									<input type="checkbox"/>	<input type="checkbox"/>
8									<input type="checkbox"/>	<input type="checkbox"/>
9									<input type="checkbox"/>	<input type="checkbox"/>
10									<input type="checkbox"/>	<input type="checkbox"/>

Set Communication

Set Communication Setting

1. Hardware Type

Hardware Type: Hardware Without Ethernet

2. Modbus Master

Serial: RS485

Baudrate: 115200

Parity: NONE

Stop Bits: 1 Stop Bit

TimeOut (ms): 1000

Cyclic Delay (ms): 100

Protocol: Modbus RTU

Write Type: Write on Change Data

Enable Modbus only if PROFIBUS is Active

3. PROFIBUS

ID Device: 1

Baudrate: Auto Baudrate

Number Byte In: 16

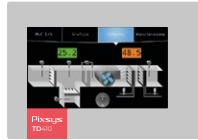
Number Byte Out: 16

Enable Error/Diagnosis for Modbus Slaves

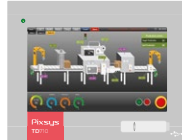
Number Continuous Error: 3

Enable PROFIBUS Diagnosis

HMI - Operator panels



TD410



TD710



TD810



TD820

	TD410	TD710	TD810	TD820
DISPLAY	4.3" TFT 480 x 272	7" TFT 800 x 480	10" TFT 800 x 600	12" TFT 1280 x 800
TOUCH-SCREEN	Resistive	Resistive	Resistive	Resistive
DIMENSIONS (mm)	140 x 100 x 29	204 x 160 x 35	274 x 216 x 35	317 x 256 x 35
PANEL CUT-OUT (mm)	132 x 90	181 x 144	259 x 202	302 x 242
POWER SUPPLY	12..24 V AC / DC - 5,5 W	12..24 V AC / DC - 6,5 W	12..24 V AC / DC - 7,5 W	12..24 V AC / DC - 8,5 W
SERIAL PORTS	RS485 - CAN - 1 USB	RS232 - RS485 CAN - 3 USB	RS232 - RS485 CAN - 3 USB	RS232 - RS485 CAN - 3 USB
ETHERNET	10 / 100 Mbit/s	10 / 100 Mbit/s	2x 10/100/1000 Mbit/s	2x 10/100/1000 Mbit/s
EXPANSION I/O SLOT 1	ETD1644	ETD1644	ETD1644	ETD1644
EXPANSION I/O SLOT 2	○	ETD1644	ETD1644	ETD1644
EXPANSION I/O SLOT 3	○	○	○	○
SOFT-PLC	●	●	●	●

SOFTWARE FEATURES

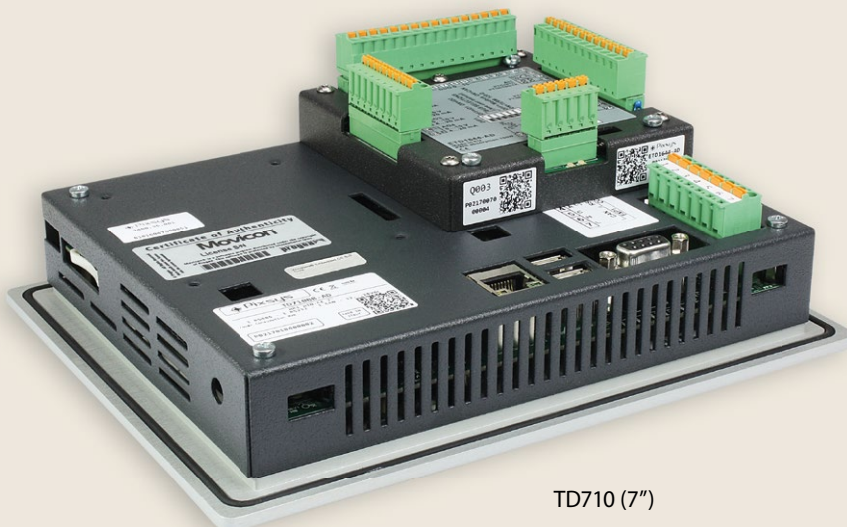
OPERATING SYSTEM	Windows® Embedded Compact 7 (WEC 7)			
CPU	CORTEX-A8 @1.0GHz			
RAM	512 MB DDR3			
FLASH MEMORY / STORAGE	4GB	4GB	4GB	4GB
FANLESS (0-45°C Op. temperature)	●	●	●	●
UPS (assisted shut down)	○	○	○	○
MQTT Client	●	●	●	●

PROGRAMMING TOOLS

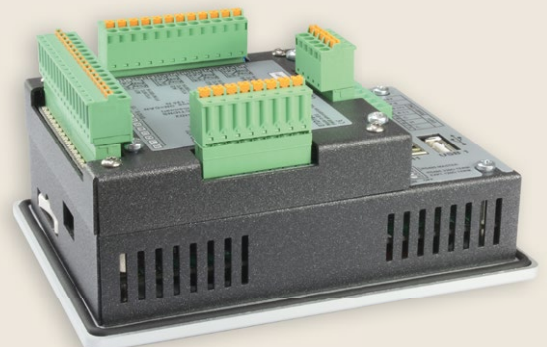
LOGICLAB (logics)	●	●	●	●
MOVICON CE (logics - graphics)	●	●	●	●
MOVICON X86 (logics - graphics)	○	○	○	○

PROTOCOLS Modbus RTU - Modbus TCP/IP - CAN Open - ADS Twin CAT - B+R System 2000 PVI - S7/TCP - FINS Serial - FINS Ethernet - NJ Ethernet/IP - MELSEC Serial - MELSEC Ethernet - DF1 Protocol - Ethernet/IP

HMI example with plug-in I/O board ETD1644-AD



TD710 (7")



TD410 (4,3")

Panel PC



TD750-A



TD850-A



TD860-A



TD900-A



TD910-A



TD920-A

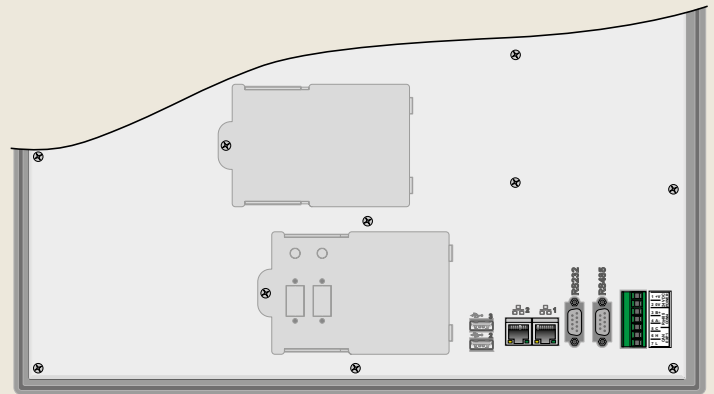
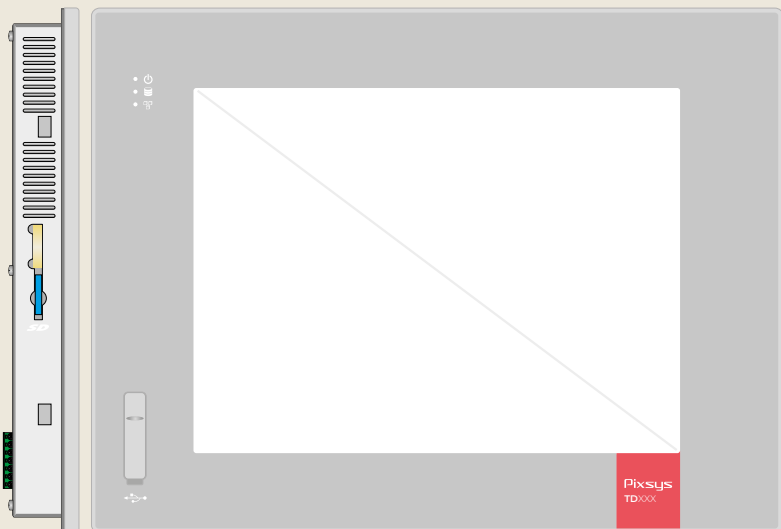
7" TFT 800 x 600	10.4" TFT 800 x 600	12.1" TFT 1280 x 800	15" TFT 1024 x 768	18.5" TFT 1366 x 768	21.5" TFT 1920 x 1080
Resistive	Resistive	Resistive	Resistive	Resistive	Resistive
204 x 160 x 34	325 x 260 x 26	321 x 254 x 26	435 x 330 x 29	474 x 310 x 29	540 x 353 x 29
181 x 144	302 x 242	302 x 242	416 x 313	460 x 296	525 x 335
24 V DC - 12 W	24 V DC - 18 W	24 V DC - 20 W	24 V DC - 25 W	24 V DC - 28 W	24 V DC - 32 W
RS232 - RS485 - 3 USB	RS232 - RS485 - 3 USB	RS232 - RS485 - 3 USB	RS232 - RS485 - 3 USB	RS232 - RS485 - 3 USB	RS232 - RS485 - 3 USB
10 / 100 Mbit/s	2x 10/100/1000 Mbit/s	2x 10/100/1000 Mbit/s	2x 10/100/1000 Mbit/s	2x 10/100/1000 Mbit/s	2x 10/100/1000 Mbit/s
○	Mini PCI Express	Mini PCI Express	Mini PCI Express	Mini PCI Express	Mini PCI Express
○	Mini PCI Express	Mini PCI Express	Mini PCI Express	Mini PCI Express	Mini PCI Express
○	○	○	○	○	○
●	●	●	●	●	●

Windows® 10 IoT LTSB Enterprise 64bit

Intel® Celeron® J1900 Quad Core @2.0GHz, 2M Cache

4 GB DDR3	4 GB DDR3	4 GB DDR3	4 GB DDR3	4/8 GB DDR3	4/8 GB DDR3
SSD Sata 2,5" 32GB	SSD Sata 2,5" 64GB	SSD Sata 2,5" 64/128GB		SSD Sata 2,5" 64 / 128 / 256 GB	
●	●	●	●	●	●
●	●	●	●	●	●
○	○	○	○	○	○
●	●	●	●	●	●
○	○	○	○	○	○
●	●	●	●	●	●

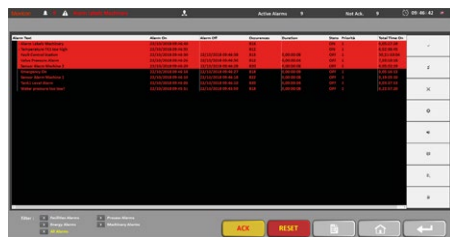
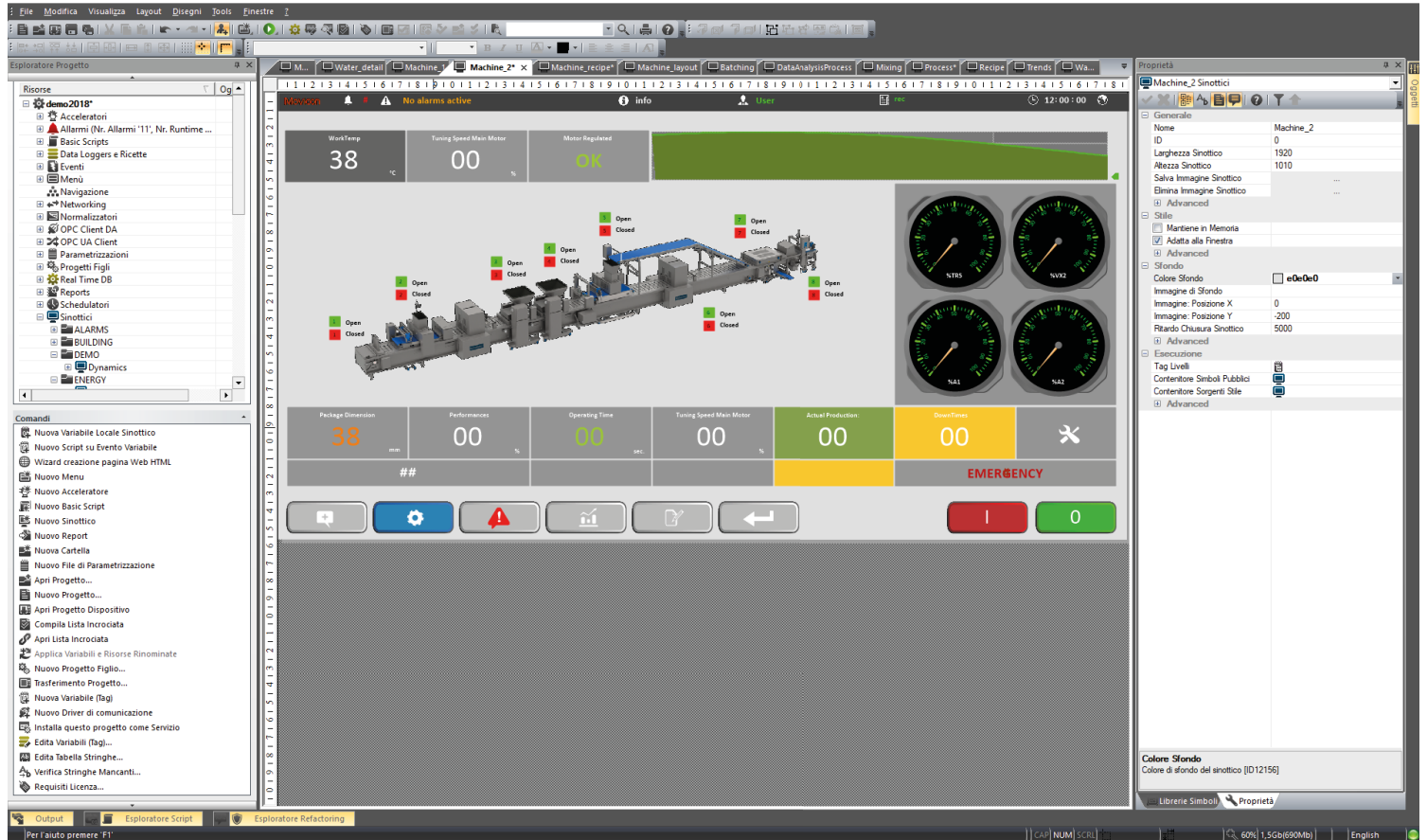
Modbus RTU - Modbus TCP/IP - CAN Open - ADS Twin CAT - B+R System 2000 PVI - S7/TCP - FINS Serial - FINS Ethernet - NJ Ethernet/IP - MELSEC Serial - MELSEC Ethernet - DF1 Protocol - Ethernet/IP



Movicon™ 11

All-in-one development environment for graphics and supervisory on Windows CE and Windows x86/x64. Inbuilt extensive library of symbols and graphical objects for powerful synoptics.

Direct access to PLC variables through the Pixsys programming tool LogicLab and integration of other brand's PLC communication protocols. It is also possible to create custom logics using editable scripts in VBA language, VB.Net and Instructions list (AWL).



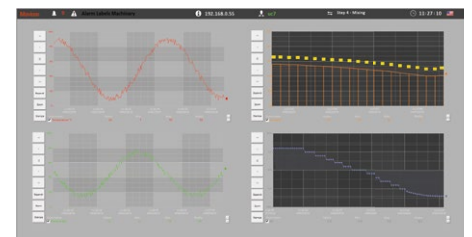
Powerful and all-inclusive Alarm Management

Movicon 11 offers a powerful and totally configurable Alarm management with support to the ISA S-18 normative. Alarms are stored on databases for subsequent chronological or statistical analysis. The Alarm Dispatcher sends notifications to personnel by SMS, Email or Voice Modem Text-to-speech.



Data Recording on DB

Process data can be stored on any relational DB or encrypted using Data Loggers. Data are transparently recorded using ODBC technology to make your project database independent.



Reports, Trends and Data Analysis

Movicon 11 provides powerful analyzing and reporting tools to use no matter where historical data are recorded. Trends, Charts, Tables, Data Analysis and an inbuilt powerful Report Designer are included, offering sophisticated analysis solutions locally and over the web. Historical data analyzing is totally integrated and does not require additional tools, allowing access to any DB, data extraction, chart or table representation. The Report Designer allows to create and manage reports locally.

PDR - Variable Frequency Drives - Sensorless



PDR100



PDR200

POWER RANGE	0,4 - 0,75 - 1,5 - 2,2 kW	0,75 .. 22kW
POWER SUPPLY (input)	200..240V AC 50/60 Hz Single-phase	380..480 V AC 50/60 Hz Three-phase
POWER SUPPLY (output)	0..input V AC Three-phase	0..input V AC Three-phase
OUTPUT FREQUENCY	0,01~400Hz	0,01~400Hz (IM Sensorless: 0,01~120Hz)
ALGORITHM CONTROL	V / f with motor sliding compensation	Vectorial sensorless open-loop control with load/motor autotuning
DIGITAL INPUTS	5 (PNP o NPN)	5 (PNP o NPN), 1 x pulse train 12V/0..32KHz
ANALOGUE INPUTS	1 x potentiometer, 1 x 0..10 V, 1 x 0..10V/4..20mA	1 x potentiometer, 1 x 0..10V, 1 x 0..10V/4..20mA
SAFE INPUTS	○	1 x STO function input (3 wires)
DIGITAL OUTPUTS	2 x relay (1 NC/NO, 1 NO) 250 V AC / 1A	1 x relay (1 NC/NO), 1 x PNP (Open Collector), 1 x pulse train 12V/0..32KHz
ANALOGUE OUTPUTS	1 x 0..10 V	1 x 0..10V/4..20mA
FIELDBUS (built-in)	Modbus RTU su RJ45	Modbus RTU on terminal block and on RJ45
FIELDBUS (option)	○	Ethernet IP, Modbus TCP/IP, CANopen, Profibus DP, Profinet
SEALING	IP20	IP20
CONTROL PANEL (built-in)	LED Keypad with potentiometer	LED Keypad
REMOTE KEYPAD (optional)	(PDR100-OPT-KEY2)	(PDR200-OPT-KEY2)
SMART COPIER (optional)	●	●
INTEGRATION WITH LOGICLAB	●	●
SOFTWARE FEATURES		
TORQUE BOOST	●	●
MOTOR SELF-LEARNING	○	●
PID CONTROL	●	●
PLC FUNCTIONS	○	●
MOTOR SURCHARGE PROTECTION	●	●
ADVANCED ENERGY SAVING OPTIONS	●	●
SAFE TORQUE OFF FUNCTION (STO)	○	●
APPLICATIONS		
PUMPS	●	●
FANS	●	●
COMPRESSORS	○	●
CONVEYOR BELTS	●	●
POSITIONING	●	●
AUTOMATIC MACHINES	●	●

Solid State Relays



	OKPAC	SAL / SU / SUL	SVTA	SIT	SGT
SWITCHING VOLTAGE	24..510 V AC	24..600 V AC	200..480 V AC	24..520 V AC	24..600 V AC
CONTROL VOLTAGE	3,5..30 V DC	3,5..30 V DC	4..20 mA	10..30 V DC 90..240 V AC	8..30 V DC
PROTECTION AGAINST SHORT-CIRCUIT	●	●	○	●	●
PHASES	1	1	3	3	3
RANGE	25A / 60A / 75A 90A / 125A	30A / 50A / 75A	3 x 50A / 3 x 75A 3 x 125A	3 x 22A	3 x 25A / 3 x 50A 3 x 75A / 3 x 125A

APPLICATIONS

OVENS / FURNACES	●	●	●	●	●
FOOD INDUSTRY	●	●	○	○	●
PACKAGING / PLASTIC INDUSTRY	●	●	○	○	●
COLD CHAIN EQUIPMENT / HVAC	●	●	●	●	●
LABORATORY EQUIPMENT	●	●	●	●	●

Dynisco - Melt pressure transmitters



	ECHO	TPT / PT4 / MDT	VERTEX
PROCESS CONNECTION	1 / 2 - 20 UNF M 14 M 22	1 / 2 - 20 UNF M 14 M 22	1 / 2 - 20 UNF M 14 M 22
POWER SUPPLY	16..30 V DC	16..30 V DC	16..30 V DC
ANALOGUE OUTPUT	mV / V - Volt - mA	mV / V - Volt - mA	mV / V - Volt - mA

APPLICATIONS

PACKAGING	●	●	●
PLASTIC INDUSTRY	●	●	●

Temperature sensors

SENSOR TYPE

PTC	TCJ
NTC	TCK
PT100A (class A)	TCS
PT100B (class B)	TCE
PT1000	TCR
Ni100	Others on request..

PROCESS CONNECTION

0000	(no connector)	M10/F
1/8"/S	(1/8" Gas sliding)	M12/F (M12x1,5 fixed)
1/4"/	(sliding)	1/8"÷MBAI (mini-bayonet)
1/2"/F	(F = fixed)	1/4"÷BAI (bayonet)
3/8"/S		M12"÷BAI (bayonet)
M8/F		Others on request..

MATERIAL

A304	(AISI 304 - 899°C)	OTTN	(brass)	KER3	(triple ceramic sheath)
A316	(AISI 316 - 899°C)	KER1	(single ceramic sheath)	Others on request..	
I600	(Inconell 1180°C)	KER2	(double ceramic sheath)		
MGO	(mineral insulation, AISI 304 sheath)				

DIAMETER X LENGHT (MM)

4x50	8x150
5x60	15x400
6x15	0C/10x5
8x20	AR/6x100 (air)
6x50	Others on request..
6x100	

HEAD / CABLE

0000	(no head)	x,xPVC	(length, type PVC cable, 30..80°C)
DIN/B		x,xTfe	(length, type Teflon cable, -60..250°C)
DIN/M	(mini DIN)	x,xGOT	(length, type molded plastic cable, -30..105°C)
MCR/90	(ceramic pin 90°)	BA/CER	(ceramic basement)
x,xTTS	(length, type Fiberglass cable, -200..500°C)		
x,xGSC	(length, type Silicon cable, -60..200°C)		

HOT JUNCTION (ONLY FOR TC)

IS	(isolated)	IS(2)	(double isolated)
MS	(grounded)	IS(3)	(double isolated)
SC	(open)	Others on request..	

DIAMETER OF WIRES (ONLY FOR TC)

0,2	0,51	1,29	3,60
0,25	0,81	1,63	
0,35	1,02	2,30	

example of ordering code:

PT100B-6x100-A304-1/2"/F-DIN/B



PT100 - PT1000



TC K / TC J

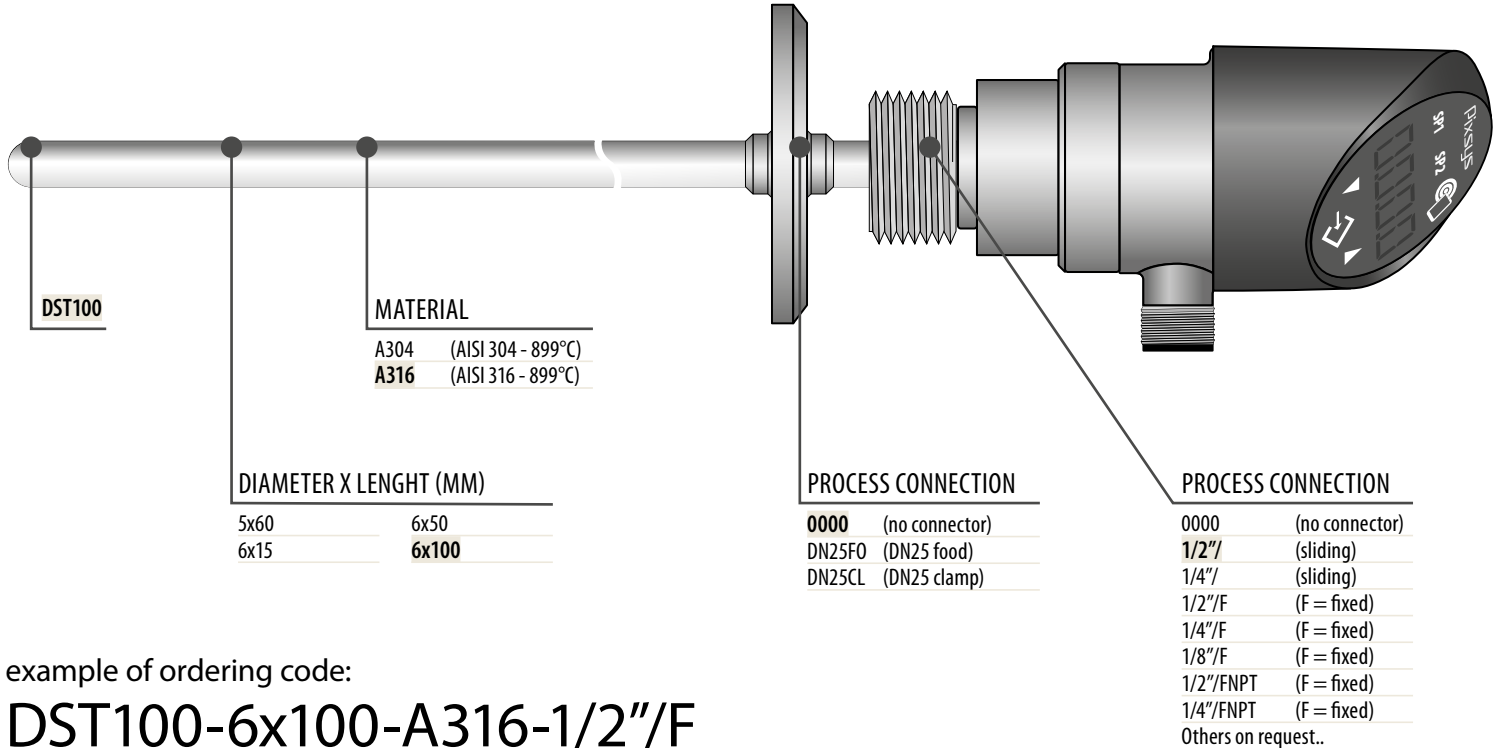


PTC / NTC

STEM DIAMETER / DIMENSIONS (mm)	4 - 6 - 8 Ø	6 Ø	6 Ø
MEASURE RANGE	-200..500 °C (TTS cable) -30..105 °C (GOT cable) -40..250 °C (GSC cable)	-200..500 °C (TTS cable) -30..105 °C (GOT cable) -40..250 °C (GSC cable)	-200..500 °C (TTS cable) -30..105 °C (GOT cable) -40..250 °C (GSC cable)
OUTPUT	3 fili	2 fili	2 fili
MATERIALS	AISI 304 or 316	AISI 304 or 316	AISI 304 / silicon
POWER SUPPLY	○	○	○
APPLICATIONS			
FOOD INDUSTRY	●	●	●
PACKAGING / PLASTIC INDUSTRY	●	●	○
FOOTWEAR / LEATHER MACHINERY	○	○	○
OVENS / FURNACES	●	●	○
COLD CHAIN EQUIPMENT / HVAC	●	○	●

For more details and further models visit www.pixsys.net


DST100 - Temperature transmitters with display



example of ordering code:



DST100-6x100-A316-1/2\"/>

NEW

 Programmable by RFID /NFC



**DST100
TEMPERATURE**

SENSOR TECHNOLOGY	PT1000
PROCESS CONNECTION	1/2" (sliding) 1/4" (sliding) 1/2"/F (F = fixed) 1/4"/F (F = fixed) 1/2"/FNPT (F = fixed) 1/4"/FNPT (F = fixed) Others on request..
POWER SUPPLY	15..30 V DC
DISPLAY (Rotation 335°)	●
ANALOGUE OUTPUT	4..20 mA / 0..10 V selectable
DIGITAL PNP OUTPUT	2
"MyPixsys" NFC APP Android  	●
APPLICATIONS	
FOOD INDUSTRY	●
COLD CHAIN EQUIPMENT / HVAC	○
WATER TREATMENT	○
LABORATORY EQUIPMENT	●
PROCESS TECHNOLOGY	●

Pressure transmitters



**ECT
INDUSTRIAL TRANSM.**



**NAT
INDUSTRIAL TRANSM.**




**FPT
FLUSH MEMBRANE**



**ECL
SUBMERSIBLE TRANSM.**



SENSOR TECHNOLOGY	thick film on ceramic	thin film on steel	thin film on steel	thick film on ceramic
PROCESS CONNECTION	1 / 4" GAS	1 / 4" GAS	1 / 2" GAS	○
POWER SUPPLY	9..30 V DC	9..30 V DC	9..32 V DC	9..30 V DC
RANGE	0..600 mBar / 0..100 Bar	0..250 Bar / 0..400 Bar	0..1 Bar / 0..100 Bar	0..200 mBar / 0..2,5 Bar
ANALOGUE OUTPUT	4..20 mA	4..20 mA	4..20 mA	4..20 mA
DIGITAL PNP OUTPUT	○	○	○	○
APPLICATIONS				
FOOD INDUSTRY	○	○	●	●
COLD CHAIN EQUIPMENT / HVAC	○	○	●	●
LABORATORY EQUIPMENT	●	●	●	●
WATER TREATMENT	●	●	●	●
PROCESS TECHNOLOGY	●	●	●	●

DST400 - Pressure transmitters with display

 Programmable by RFID /NFC

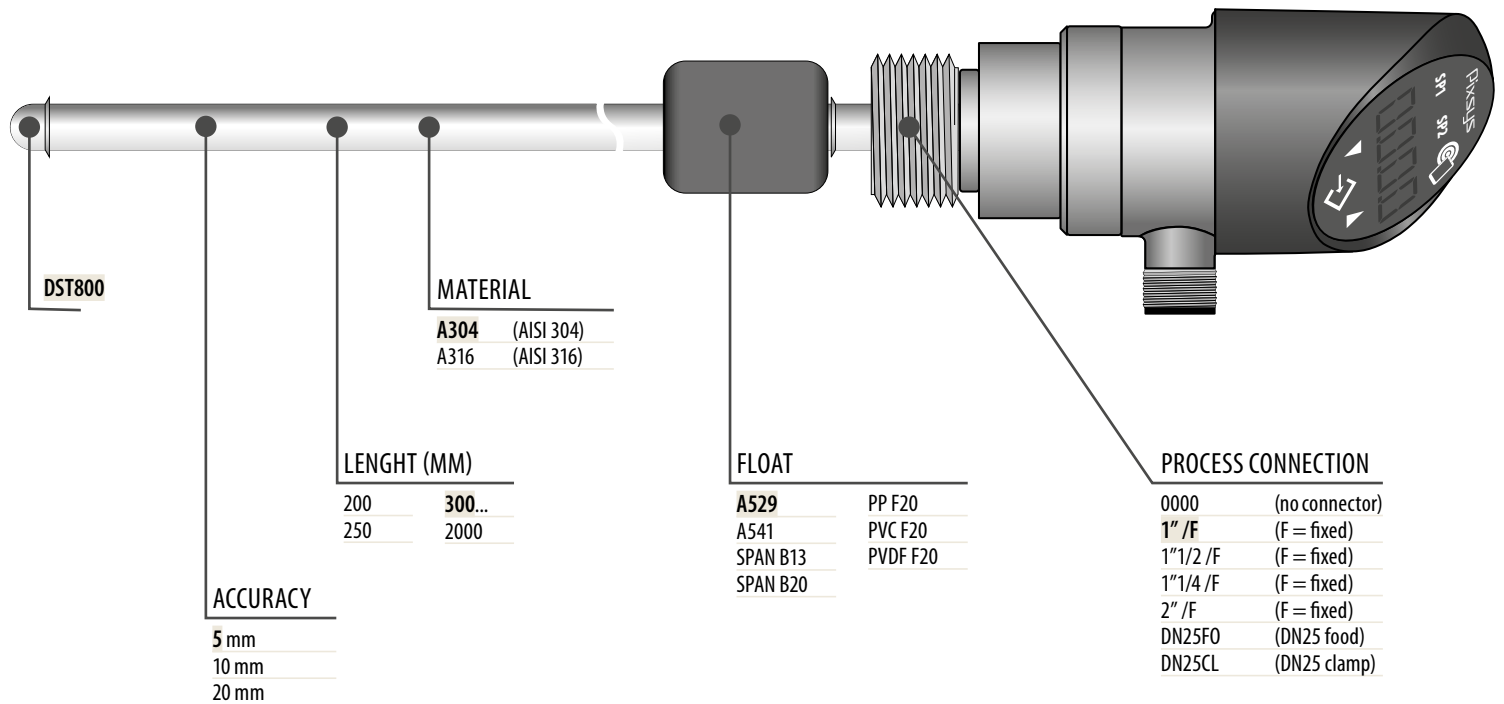


**DST400
PRESSURE**

SENSOR TECHNOLOGY	thick film on ceramic ($\leq 100\text{Bar}$) thin film on steel ($> 100\text{Bar}$)
PROCESS CONNECTION	1 / 4" GAS Rotation 343°
POWER SUPPLY	15..30 V DC
DISPLAY (Rotation 335°)	●
ANALOGUE OUTPUT	4..20 mA / 0..10 V selectable
DIGITAL PNP OUTPUT	2
"MyPixsys" NFC APP Android  	●
APPLICATIONS	
FOOD INDUSTRY	●
COLD CHAIN EQUIPMENT / HVAC	○
WATER TREATMENT	●
LABORATORY EQUIPMENT	●
PROCESS TECHNOLOGY	●

For more details and further models visit www.pixsys.net


DST800 - Level transmitters with display



example of ordering code:

DST800-5-300-A316-A529-1" /F

NEW

 Programmable by RFID /NFC



**DST800
LEVEL**

SENSOR TECHNOLOGY	REED (5 - 10 - 20 mm)
PROCESS CONNECTION	1" GAS
POWER SUPPLY	15..30 V DC
DISPLAY (Rotation 335°)	●
ANALOGUE OUTPUT	4..20 mA / 0..10 V selectable
DIGITAL PNP OUTPUT	2
"MyPixsys" NFC APP Android  	●

APPLICATIONS	
FOOD INDUSTRY	●
COLD CHAIN EQUIPMENT / HVAC	●
WATER TREATMENT	●
LABORATORY EQUIPMENT	○
PROCESS TECHNOLOGY	●

Humidity transmitters



RH96



EE060 / EE061



EE210 / EE160



EE23

	RH96	EE060 / EE061	EE210 / EE160	EE23
DIMENSIONS (mm)	126 x 20	159 x 12	80 x 80 x 50	90 x 135 x 66
POWER SUPPLY	12..30 V DC	4,5..30 V DC	15..35 V DC 15..38 V AC	15..35 V DC 15..38 V AC
ACCURACY (@ 20°C)	± 5% (15..90% RH)	± 3% (10..90% RH)	± 2% (0..90% RH)	± 1,3% (0..90% RH)
ANALOGUE OUTPUTS (Humidity)	4..20 mA / 0..10 V DC	4..20 mA / 0..1 V	4..20 mA / 0..10 V	4..20 mA / 0..10 V
ANALOGUE OUTPUTS (Temperature)	PT100	PT100	4..20 mA / 0..10 V	4..20 mA / 0..10 V

APPLICATIONS

FOOD INDUSTRY	●	●	●	○
PACKAGING / PLASTIC INDUSTRY	○	○	○	●
COLD CHAIN EQUIPMENT / HVAC	●	●	●	●
LABORATORY EQUIPMENT	○	●	●	●

IR transmitters



PC21 - 151 - 301



PYROMINI



PYROUSB



PYRONFC



EXTEMP

	PC21 - 151 - 301	PYROMINI	PYROUSB	PYRONFC	EXTEMP
MEASURE RANGE	-20..100 °C (L) 0..250 °C (M) 0..500 °C (H)	-20..1000 °C (configurable via RS485)	45..2000 °C (configurable via USB)	0..1000 °C (configurable via NFC)	-20..1000 °C
SPOT	2:1 - 15:1 - 30:1	2:1 - 20:1	15:1 - 25:1 - 75:1	15:1	2:1 - 15:1 - 30:1
OUTPUT	4..20 mA	RS485 / Modbus RTU	4..20 mA	0..10 V	4..20 mA
EMISSIVITY	0,95	configurable via RS485	configurable via USB	configurable via NFC	0,95
MATERIALS	Stainless Steel	Stainless Steel	Stainless Steel	Stainless Steel	Stainless Steel
POWER SUPPLY	9..28 V DC	6..13 V DC	6..24 V DC	6..28 V DC	12..24 V DC

APPLICATIONS

FOOD INDUSTRY	●	●	●	●	●
PACKAGING / PLASTIC INDUSTRY	○	○	○	○	○
FOOTWEAR / LEATHER MACHINERY	●	●	●	●	●
Ovens / FURNACES	●	●	●	●	●

Online assistance and support

We value the feedback of our customers on our products. We have set up a range of different communication channels so that customers can reach our technicians for help with programming of their Pixsys devices:



FORUM

This space is reserved to your questions related to set-up, configuration and operating modes for all Pixsys devices. The FAQ area summarizes the most frequent questions. You are kindly invited to consult it before posting your message.

Go to the Forum:
www.forum.pixsys.net



VIDEO - TUTORIALS

Short video-manuals provide descriptions and examples about programming options by keyboard or by Memory Cards, as well as demos of the available software tools. View them on Pixsys YouTube channel!

Youtube channel:
Pixsys srl



TRAINING SESSIONS

Special attention is reserved to technical trainings about the programmable systems (PLCs, HMIs). They are arranged upon request and can be focused on a specific application, as an opportunity to combine theory and practice. Contact our Sales dept for more details.



MAIL

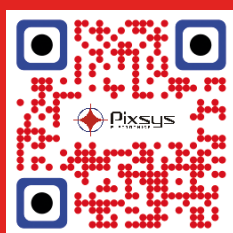
If you prefer direct contact rather than the Forum and the request is not urgent, you can contact technical support via e-mail. Remember that priority is given to requests posted on the Forum so that the information is visible to other users.

Direct contact:
support@pixsys.net



LIVE HELP

A member of the technical support team is available from Monday to Friday, between 15.00 and 17.00 on Skype ID **pixsys.support**. Nevertheless, we kindly ask you to consult first the FAQ section on the Forum where the solution may already be available. Remember also that Manuals can be downloaded from the individual product pages of the website.



Pixsys srl
Via Po, 16
I - 30030 Mellaredo di Pianiga VE
Ph. +39 041 519 0518
Fax +39 041 519 0027

www.pixsys.net - sales@pixsys.net
assistenza online: <http://forum.pixsys.net>



Printed in Italy - July 2020 - © by Pixsys srl
Subject to modifications without prior notice